

Article

Prognostic and Predictive Relevance of Tumor-Infiltrating Lymphocytes in Squamous Cell Head–Neck Cancer Patients Treated with Radical Radiotherapy/Chemo-Radiotherapy

Ioannis M. Koukourakis, Anastasia G. Gkegka, Erasmia Xanthopoulou, Christos Nanos, Alexandra Giatromanolaki and Michael I. Koukourakis

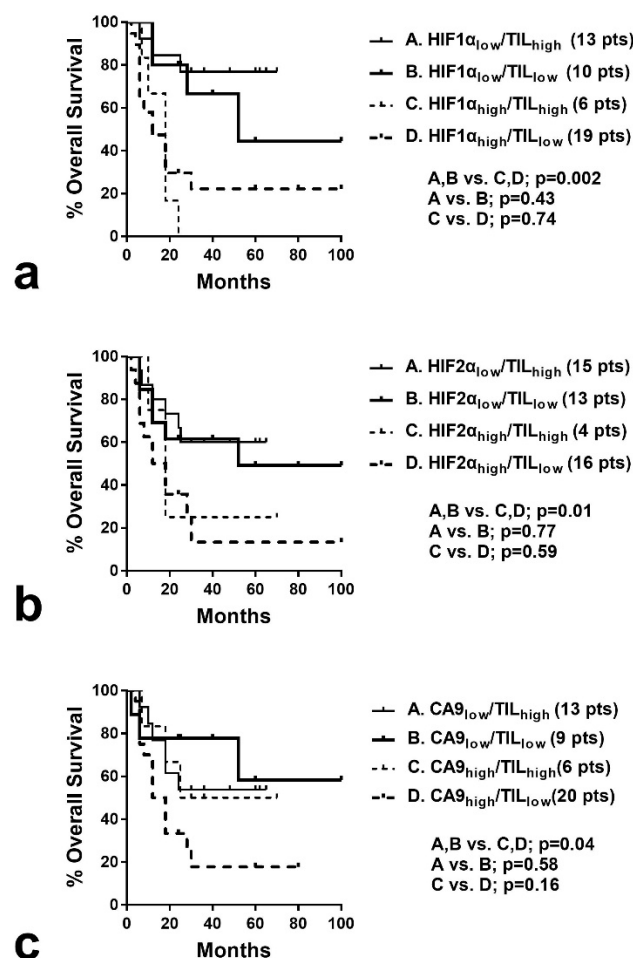


Figure S1. Kaplan–Meier disease-specific overall survival of 48 patients stratified for: (a) TIL density and HIF1 α expression, (b) TIL density and HIF2 α expression, and (c) TIL density and CA9 expression. (TIL = tumor infiltrating lymphocytes).