

Supplementary Materials

Dioxin-Linked COF Supported Palladium Complex for Rapid Room Temperature Suzuki–Miyaura Coupling Reaction

Allea Campbell,¹ Ziad Alsudairy,¹ Chaochao Dun,² Fazli Akram,¹ Kayla Smith-Petty,¹ Abrianna Ambus,¹ Danielle Bingham,¹ Tandabany Dinadayalane,¹ Conrad Ingram,¹ Xinle Li^{*1}

¹ Department of Chemistry, Clark Atlanta University, Atlanta, Georgia 30314, United States

² The Molecular Foundry, Lawrence Berkeley National Laboratory Berkeley, Berkeley, CA, 94720, USA

*Corresponding author. Email: xli1@cau.edu

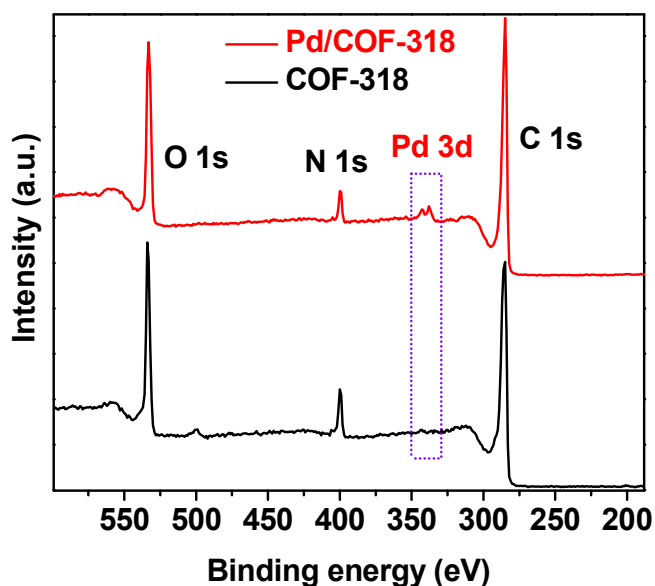


Figure S1. XPS survey spectra of COF-318 and Pd/COF-318.

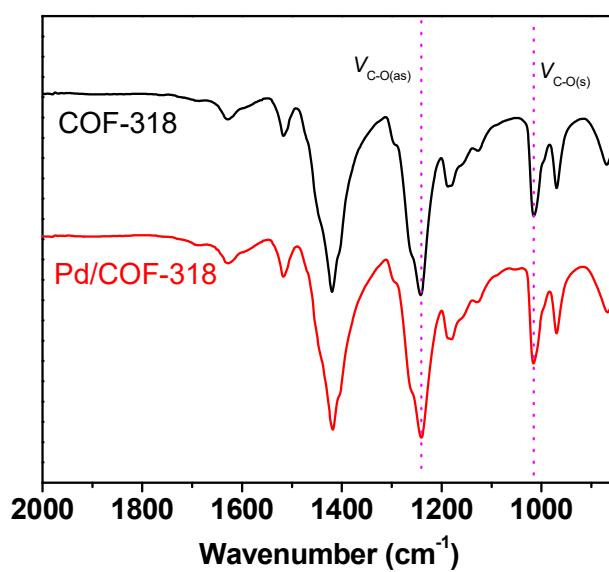


Figure S2. FTIR spectra of COF-318 and Pd/COF-318.

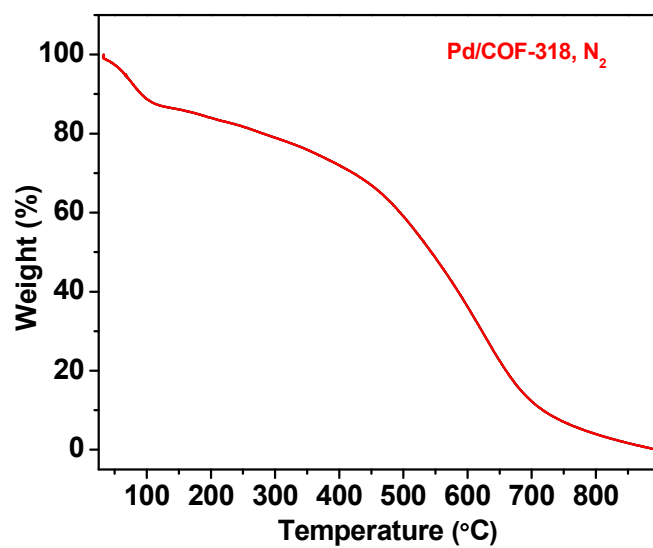


Figure S3. TGA trace for the Pd/COF-318 under N₂ atmosphere.

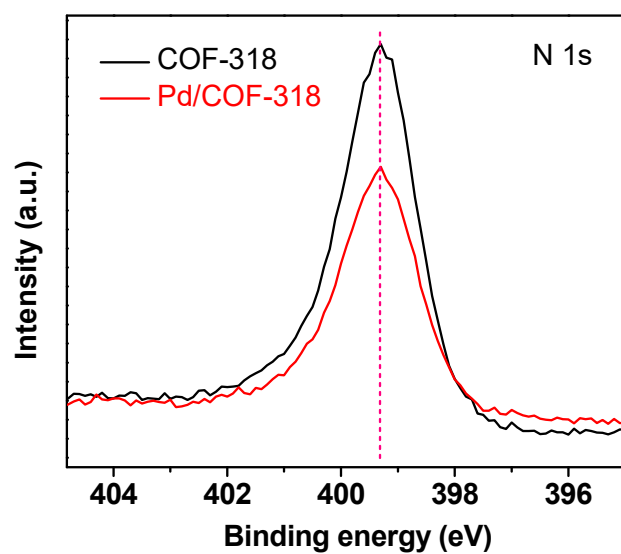


Figure S4. XPS N 1s spectra of COF-318 and Pd/COF-318.

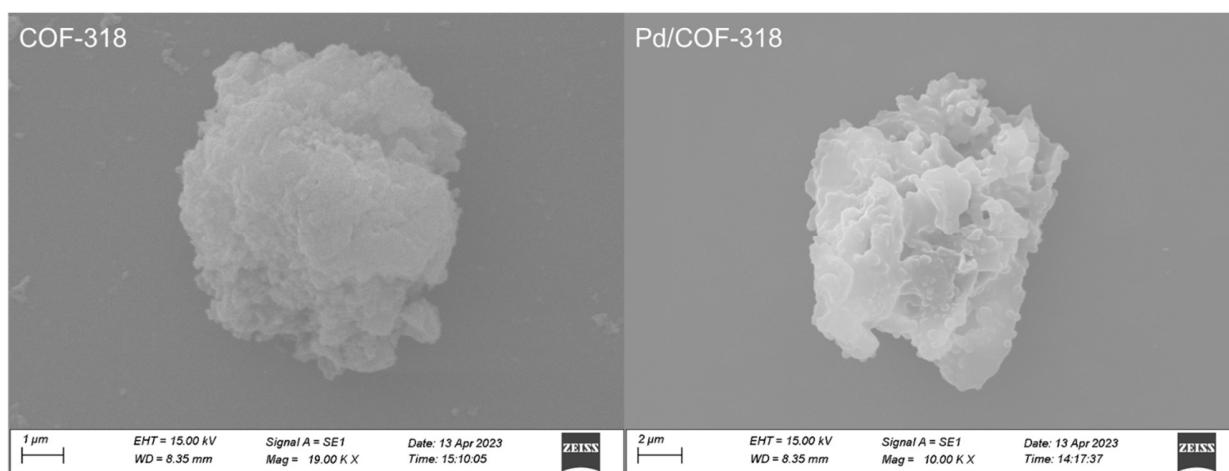


Figure S5. SEM images of COF-318 and Pd/COF-318.

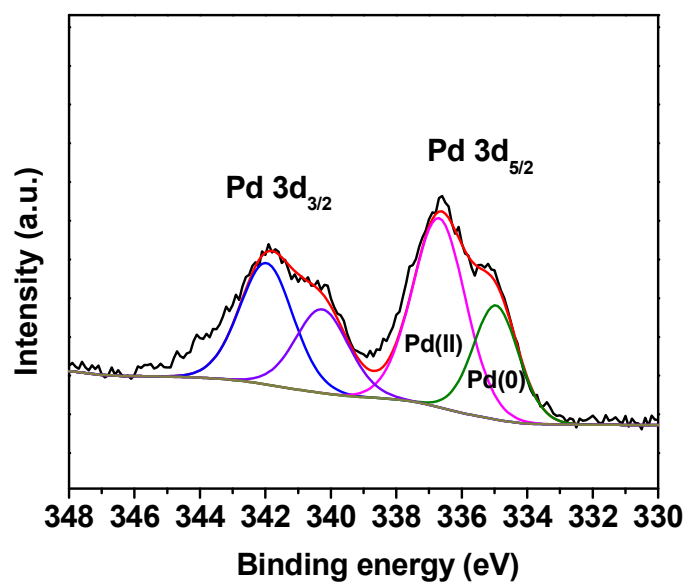
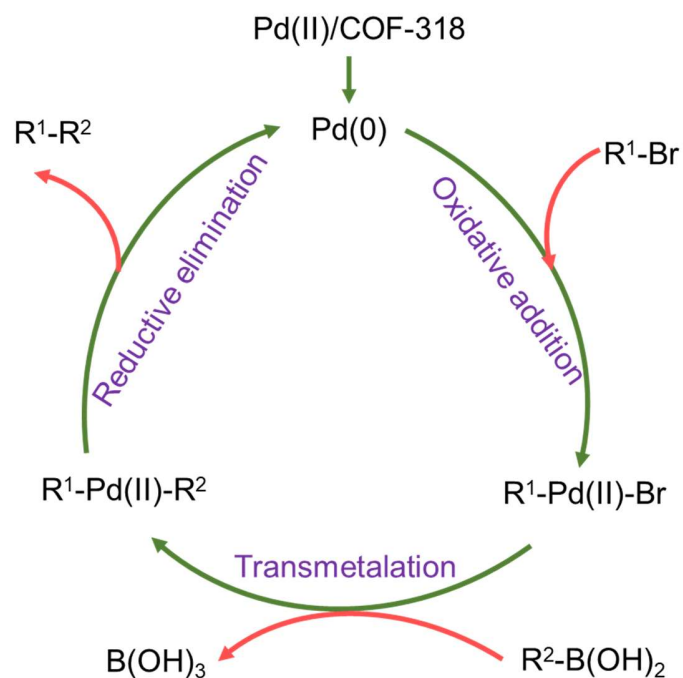


Figure S6. XPS Pd 3d spectrum of used Pd/COF-318, indicating a 34 mol% of Pd(0) in the recovered catalyst.



Scheme S1. The catalytic mechanism for Pd/COF-catalyzed Suzuki-Miyaura cross-coupling reaction.