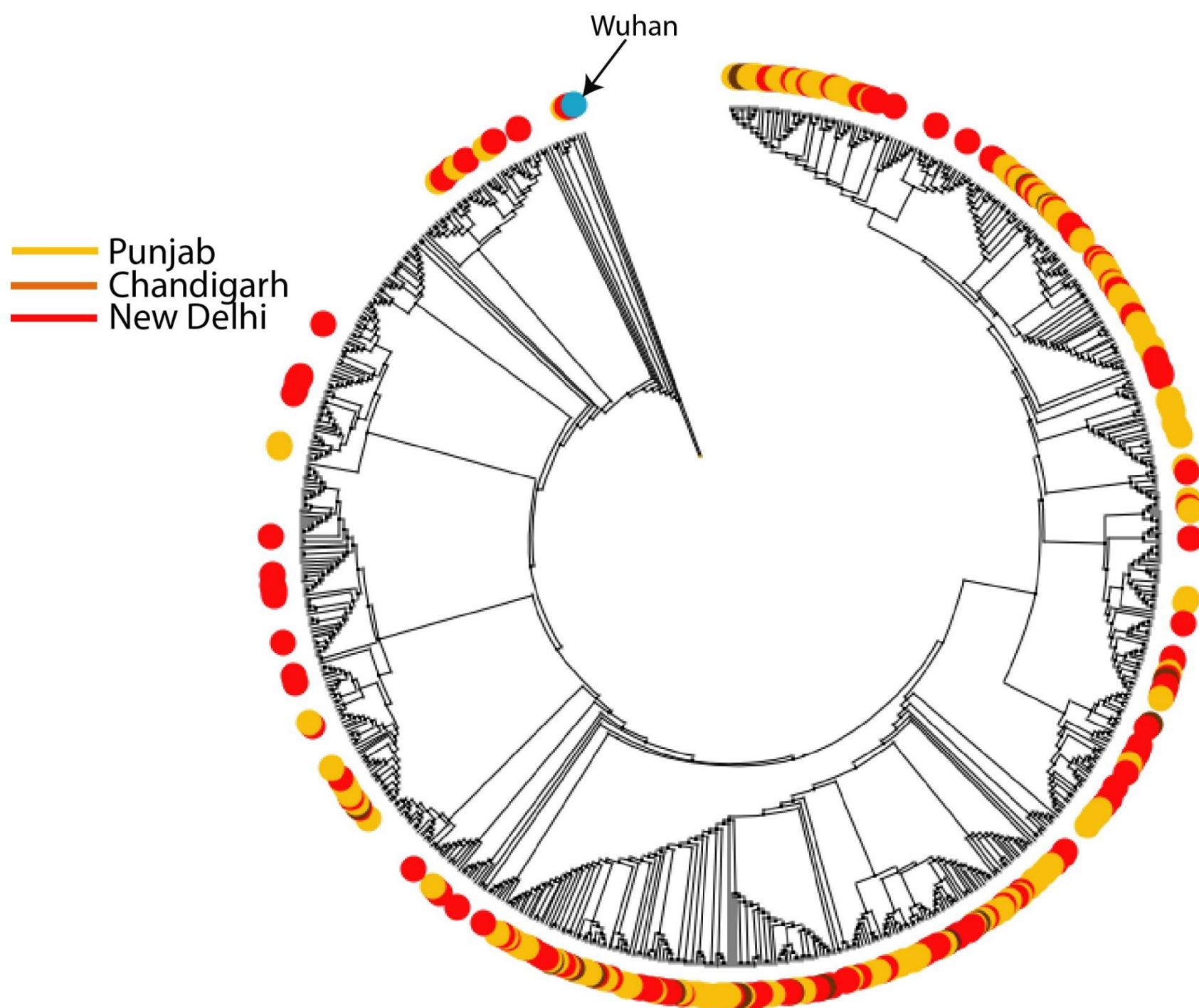
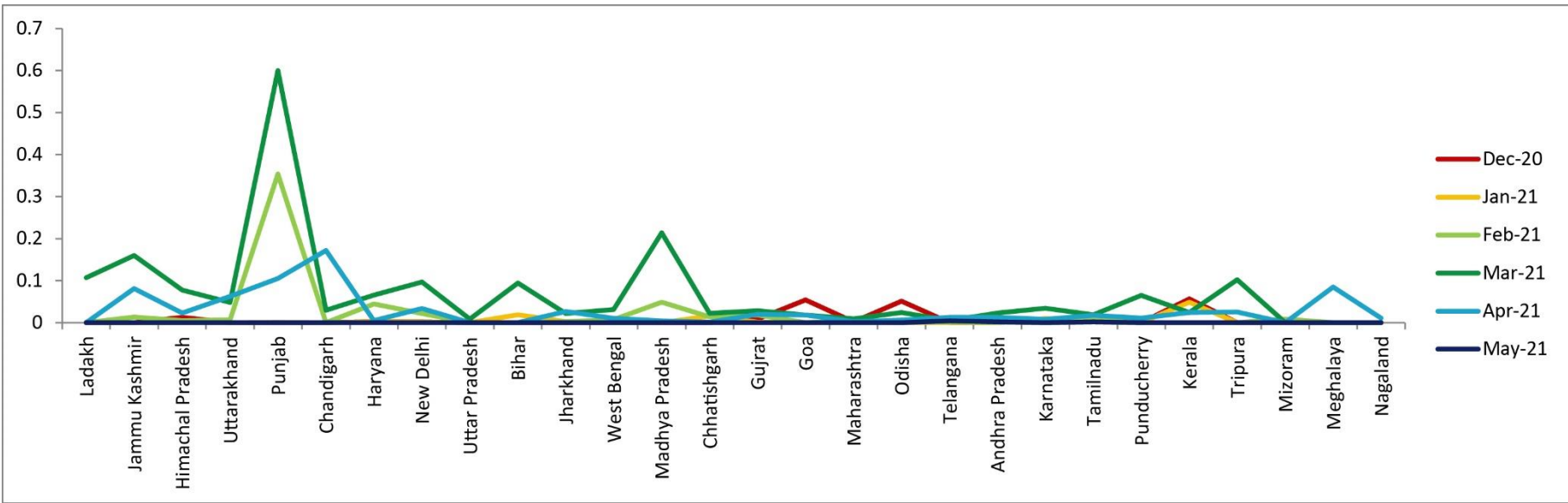


Supplementary Figure S1. The Maximum Likelihood (ML) tree showing the diverse placement of three major geographic regions of Alpha variant in India.



Supplementary Figure S2: The temporal expansion of Alpha variant in India showing the extraordinary surge in Punjab state.



Supplementary Table S1: The details of samples studied and the frequency of alpha variant in various regions of India.

States & Union Territories	Total Number of Samples	Total Number of Samples from B.1.1.7	Frequency
Chhatishgarh	572	23	0.0402
Madhya Pradesh	5965	120	0.0201
Bihar	53	6	0.1132
Jharkhand	415	22	0.0530
Odisha	81	15	0.1852
West Bengal	2939	171	0.0582
Chandigarh	197	92	0.4670
New Delhi	4160	681	0.1637
Haryana	381	46	0.1207
Himachal Pradesh	389	48	0.1234
Jammu Kashmir	741	189	0.2551
Ladakh	56	6	0.1071
Punjab	932	692	0.7425
Uttar Pradesh	221	2	0.0090
Uttarakhand	559	66	0.1181
Mizoram	199	35	0.1759
Meghalaya	290	15	0.0517
Nagaland	71	8	0.1127
Tripura	39	5	0.1282
Andhra Pradesh	1320	56	0.0424
Karnataka	1472	131	0.0890
Kerala	123	26	0.2114
Tamilnadu	780	29	0.0372
Punducherry	957	70	0.0731
Telangana	2729	74	0.0271
Goa	55	5	0.0909
Gujrat	2375	194	0.0817
Maharashtra	801	237	0.2959