

Supplementary Materials to

Application of biocompatible noble metal film materials to medical implants: TiNi surface modification

Evgeniia S. Vikulova ¹, Ksenya I. Karakovskaya ¹, Ilya V. Korolkov ^{1,*}, Tatyana P. Koretskaya ¹, Elena V. Chepeleva ², Nikolay B. Kuz'min ³, Anastasia D. Fedorenko ¹, Denis P. Pischur ¹, Tatiana Ya. Guselnikova ¹, Eugene A. Maksimovskii ¹, Ekaterina S. Marchenko ⁴, Aleksander A. Zheravin ^{2,*}, Natalya B. Morozova ^{1,*}

¹ Nikolaev Institute of Inorganic Chemistry, Siberian Branch, Russian Academy of Sciences, Ac. Lavrentiev Ave. 3, Novosibirsk 630090, Russia

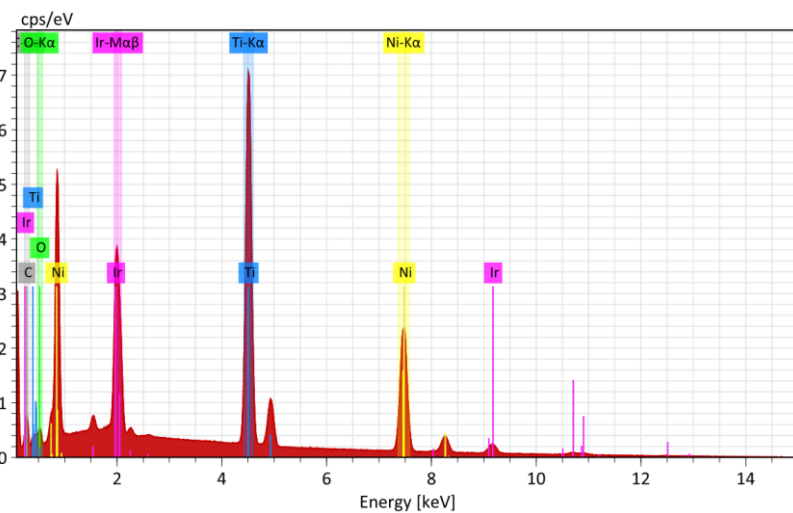
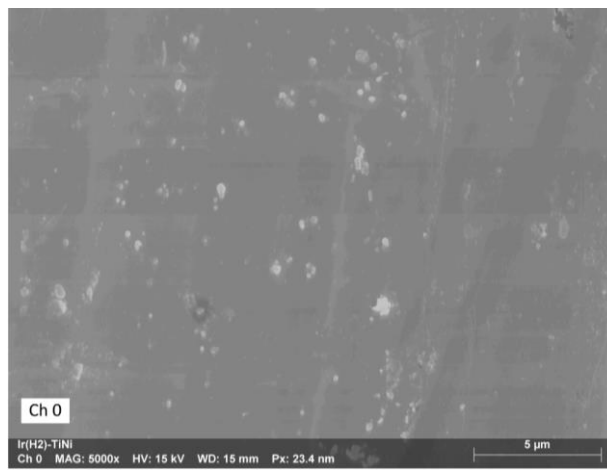
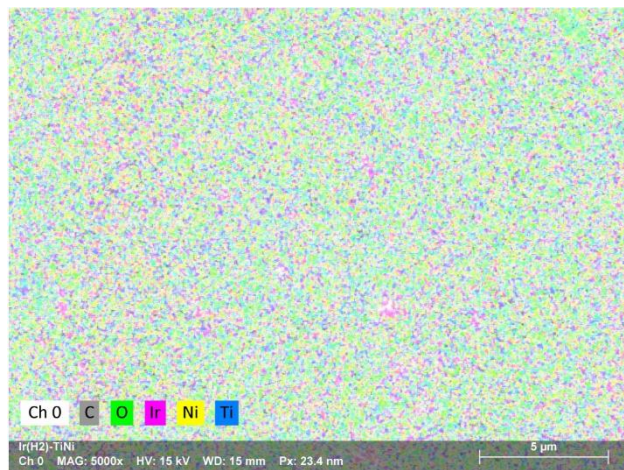
² Meshalkin National Medical Research Center, Ministry of Public Health of the Russian Federation, Rechkunovskaya Str. 15, Novosibirsk 630055, Russia

³ Rzhanov Institute of Semiconductor Physics, Siberian Branch, Russian Academy of Sciences, Ac. Lavrentiev Ave. 13, 630090 Novosibirsk, Russia

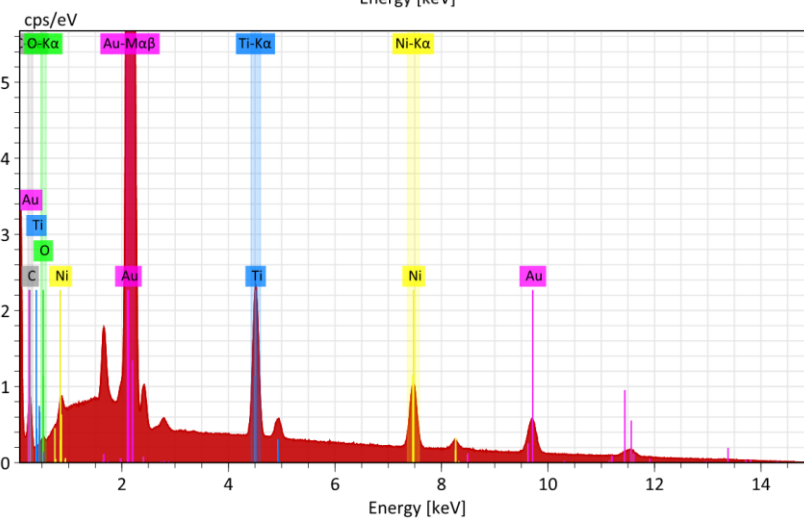
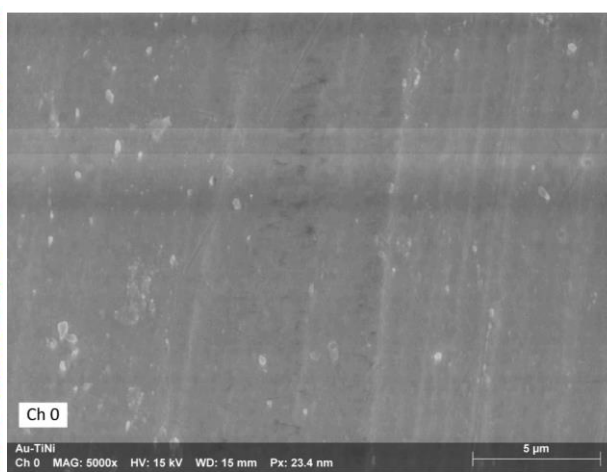
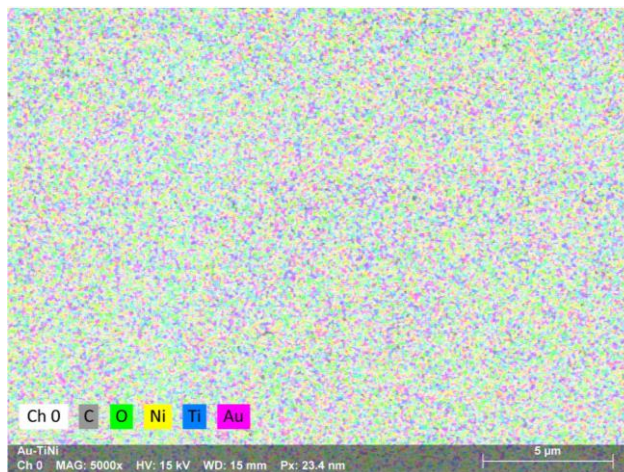
⁴ Kuznetsov Siberian Physical-Technical Institute, Tomsk State University, Novosobornaya, Sq. 1, Tomsk 634050, Russia;

* Correspondence: korolkov@niic.nsc.ru (I.V.K.), a_zheravin@meshalkin.ru (A.A.Zh.), mor@niic.nsc.ru (N.B.M.)

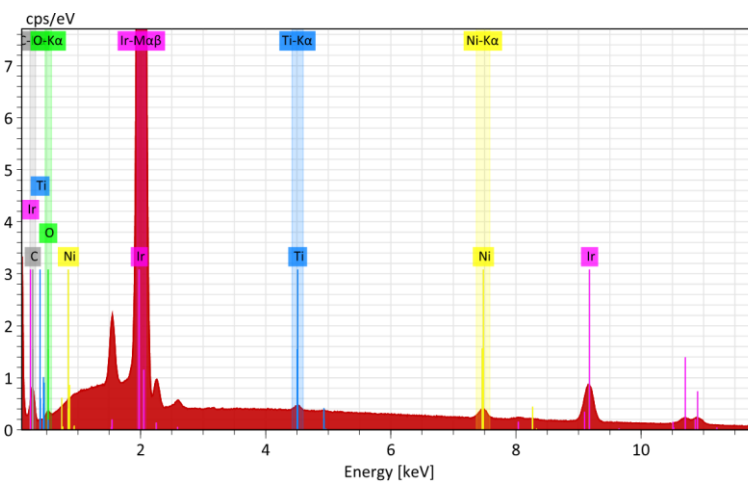
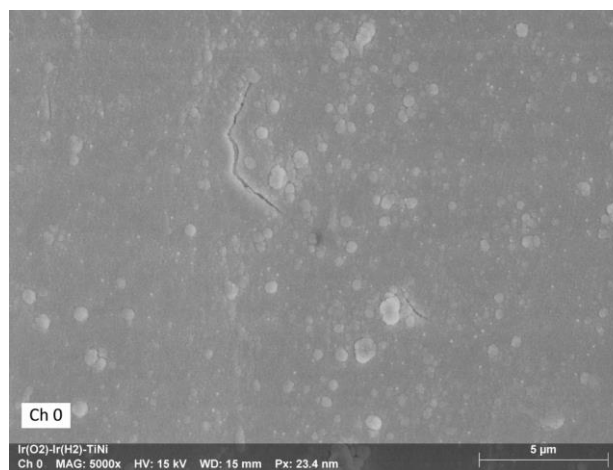
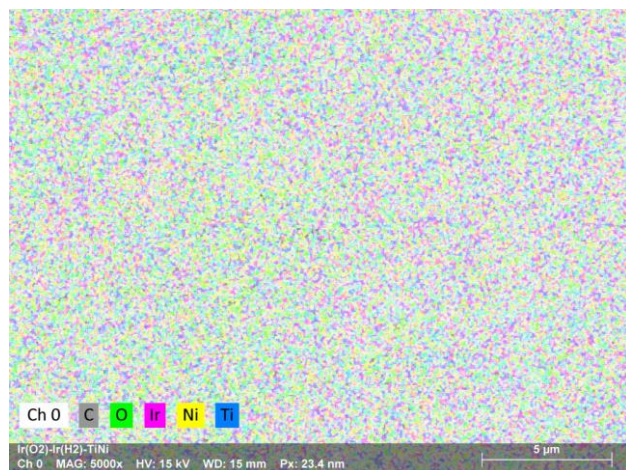
a



b



c



d

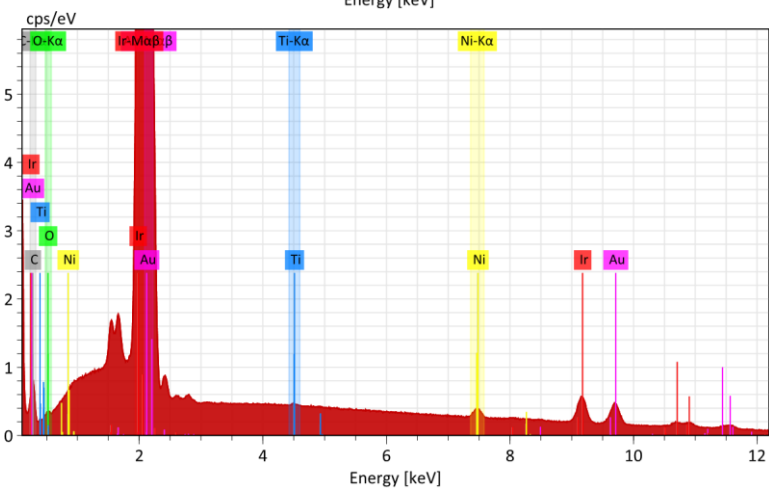
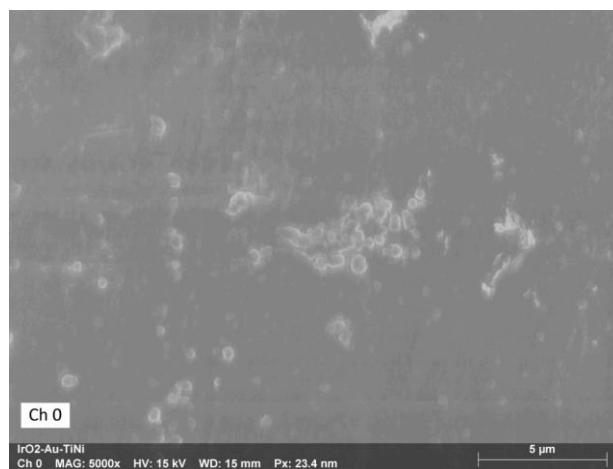
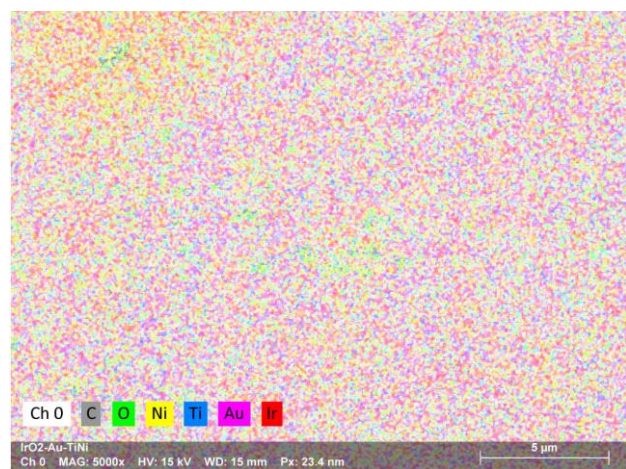


Figure S1. EDX elemental mapping of TiNi coated with noble metal films: (a) Ir'/TiNi; (b) Au/TiNi; (c) Ir/Ir'/TiNi; (d) Ir/Au/TiNi.

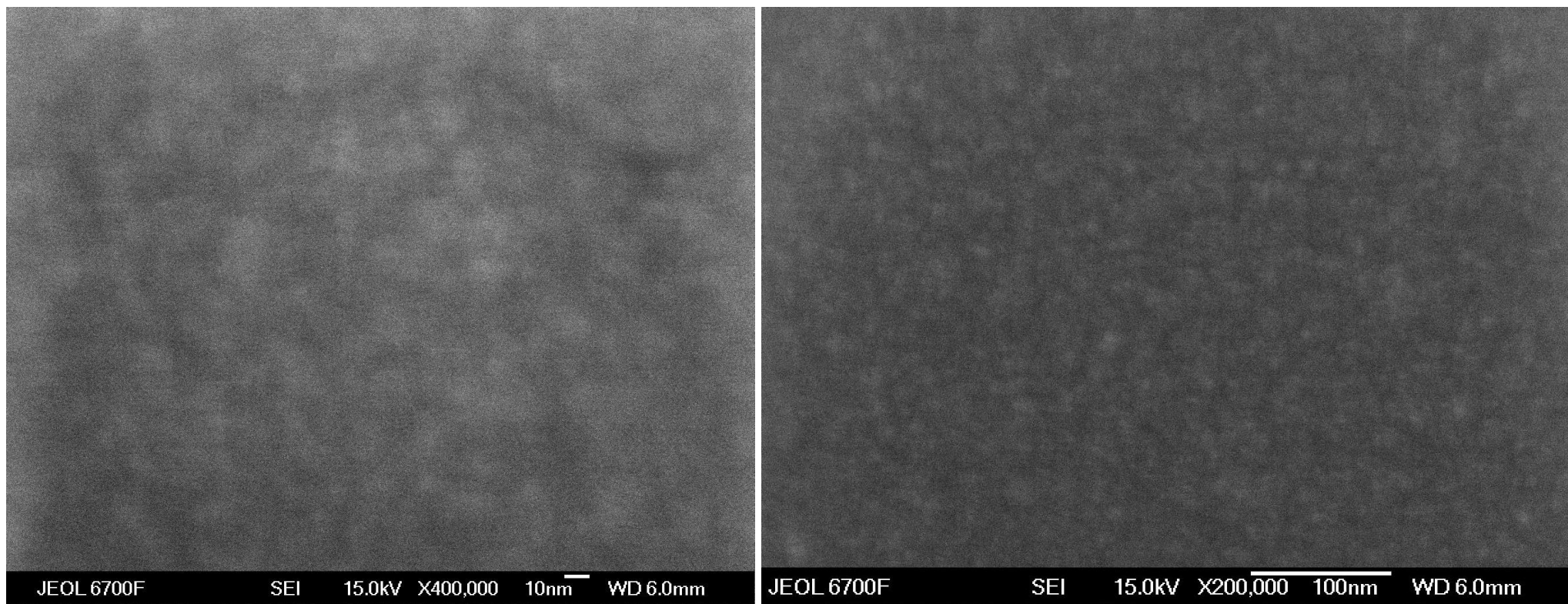
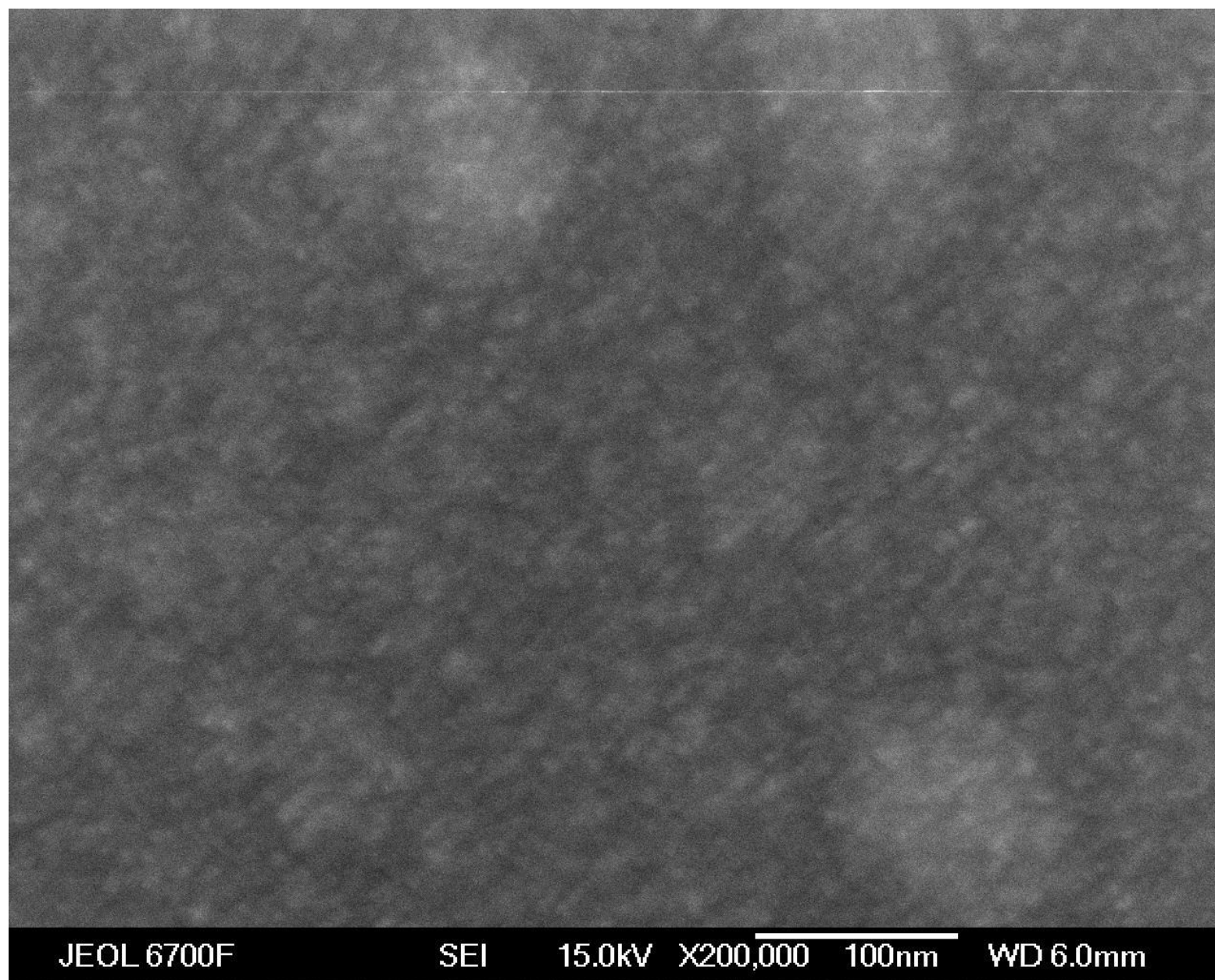
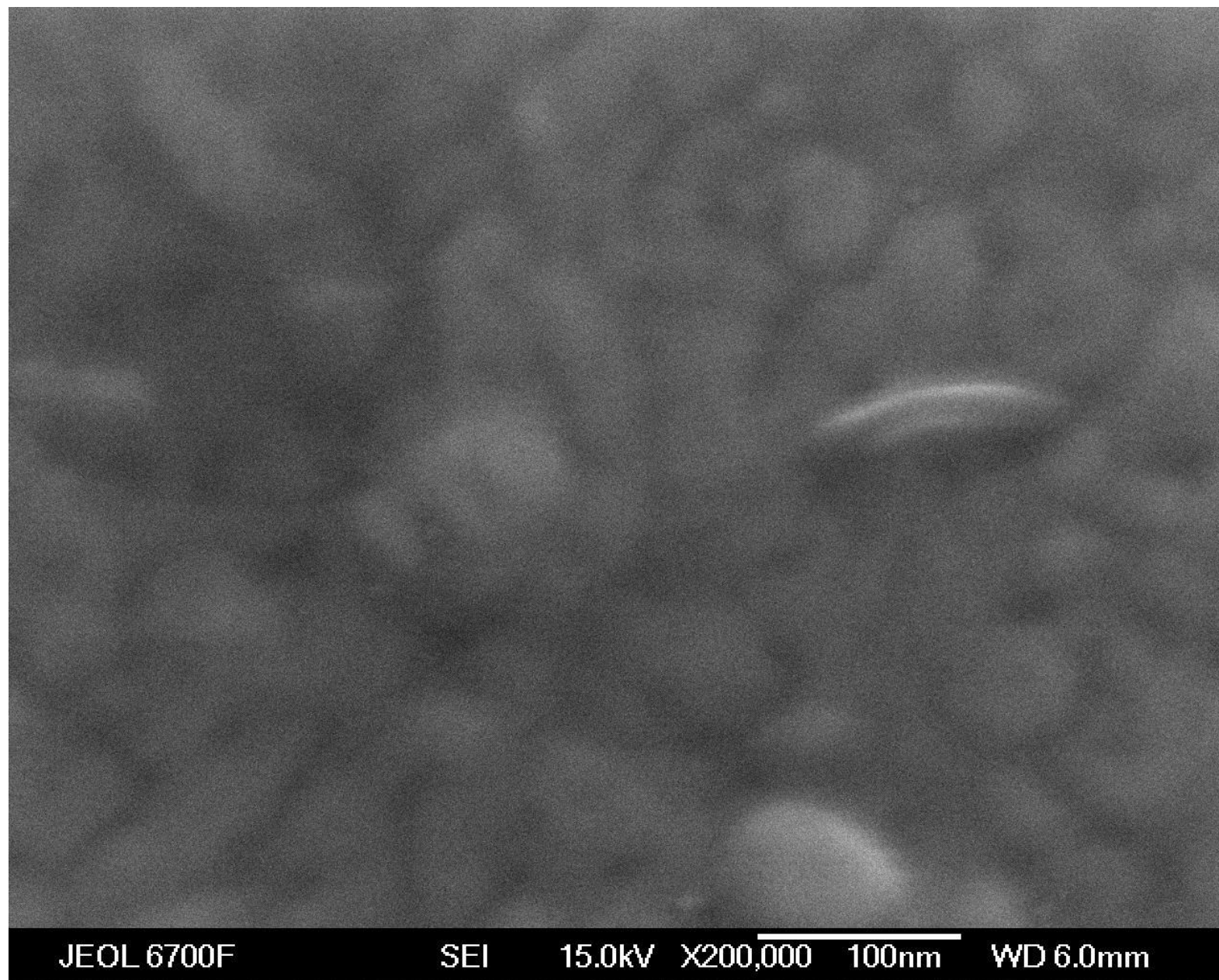


Figure S2. Typical high-resolution SEM images (magnification 400,000 and 200,000) of the surface of compact iridium layers on Si substrates (Sample 3).

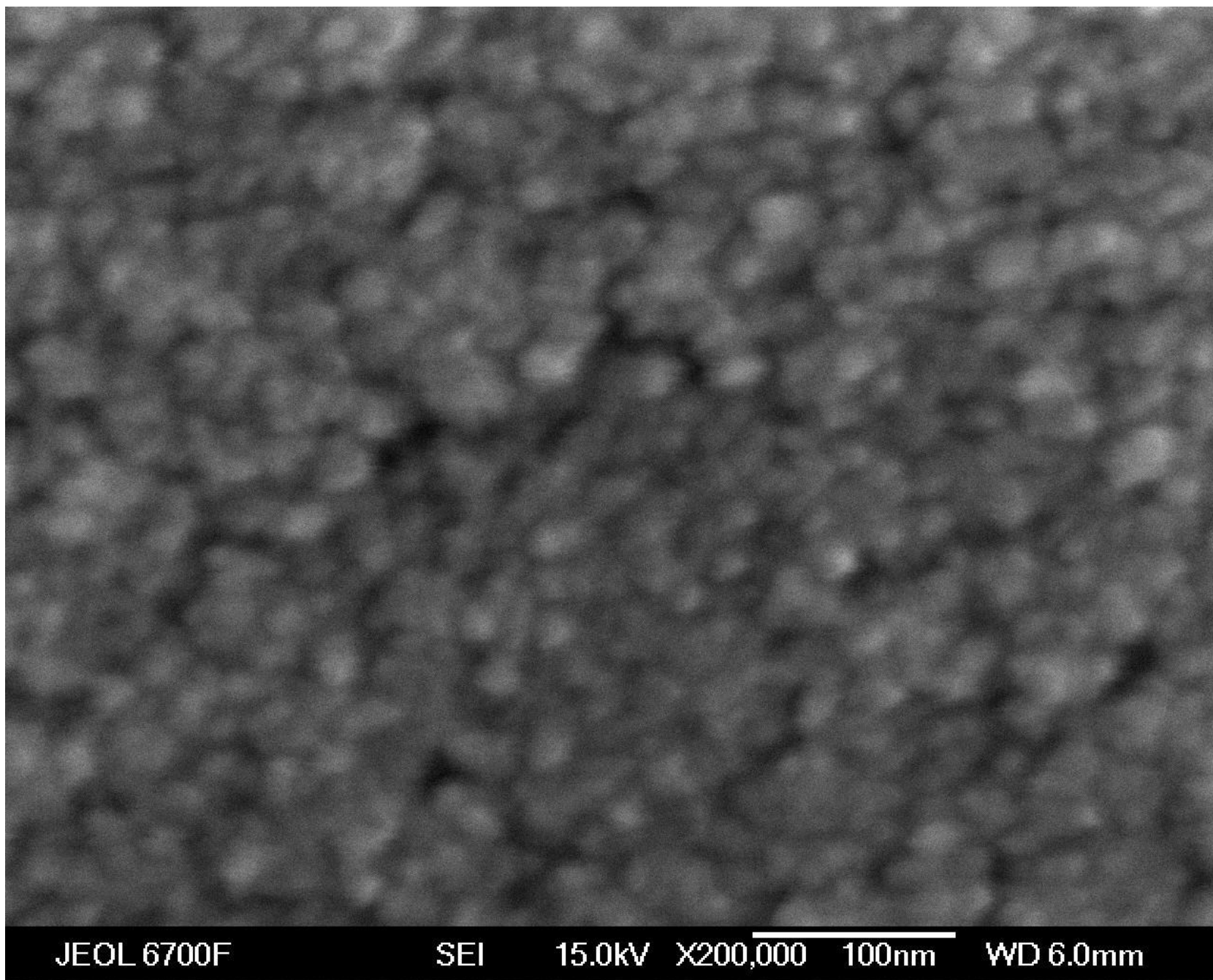
a



b



c



d

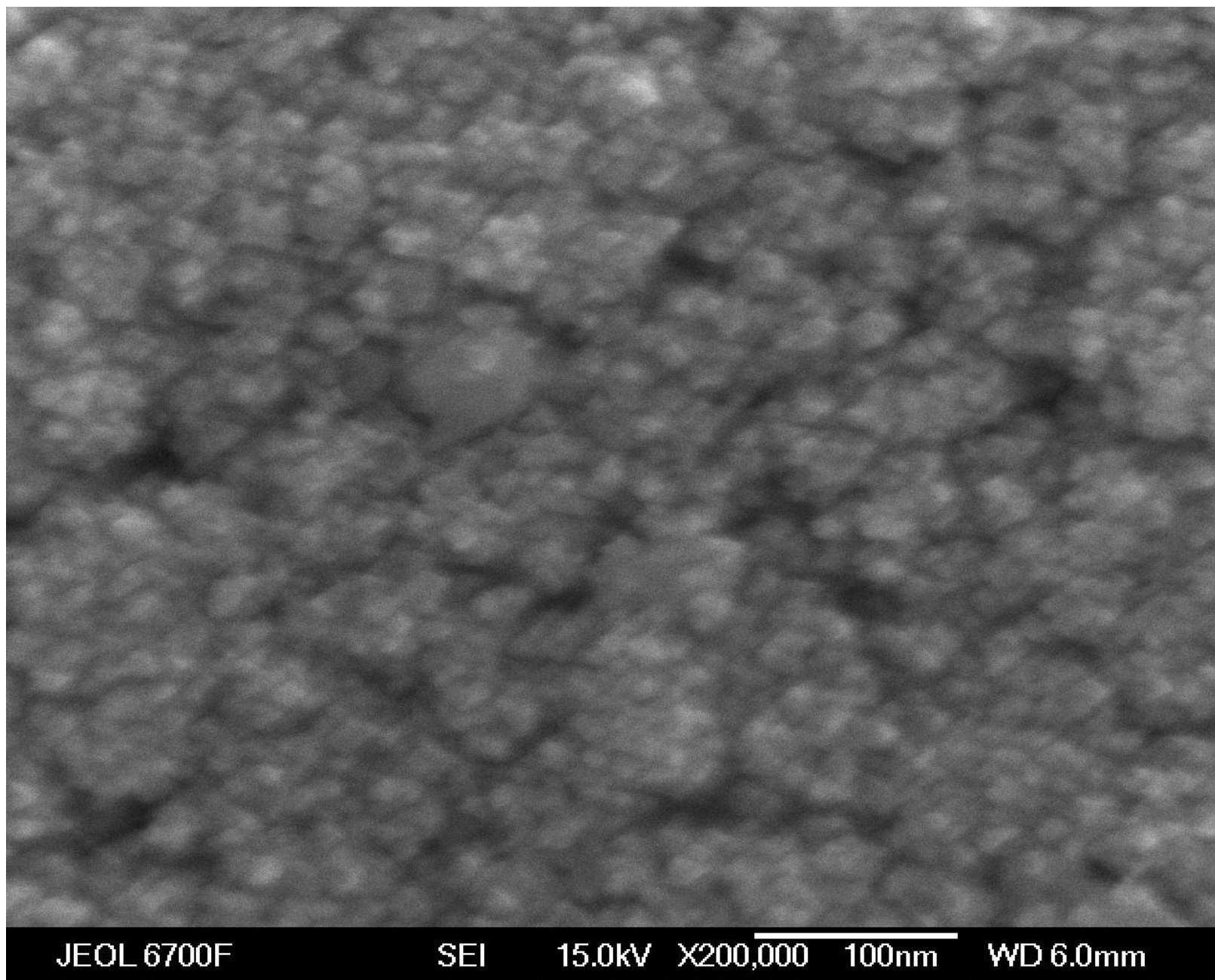


Figure S3. High-resolution SEM images (magnification 200,000) of the surface of noble metal films on TiNi substrates: (a) Ir'/TiNi; (b) Au/TiNi; (c) Ir/Ir'/TiNi; (d) Ir/Au/TiNi.

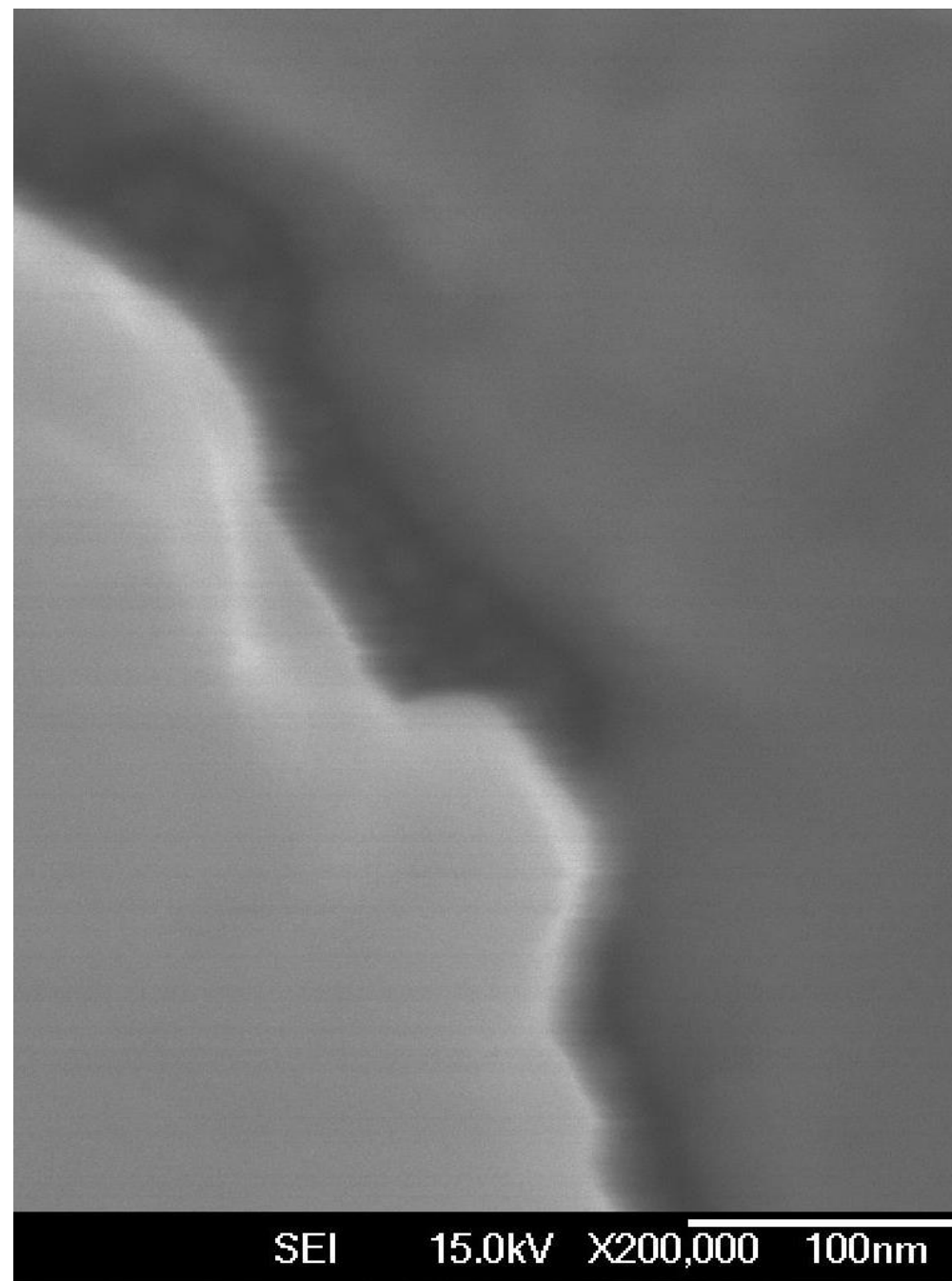
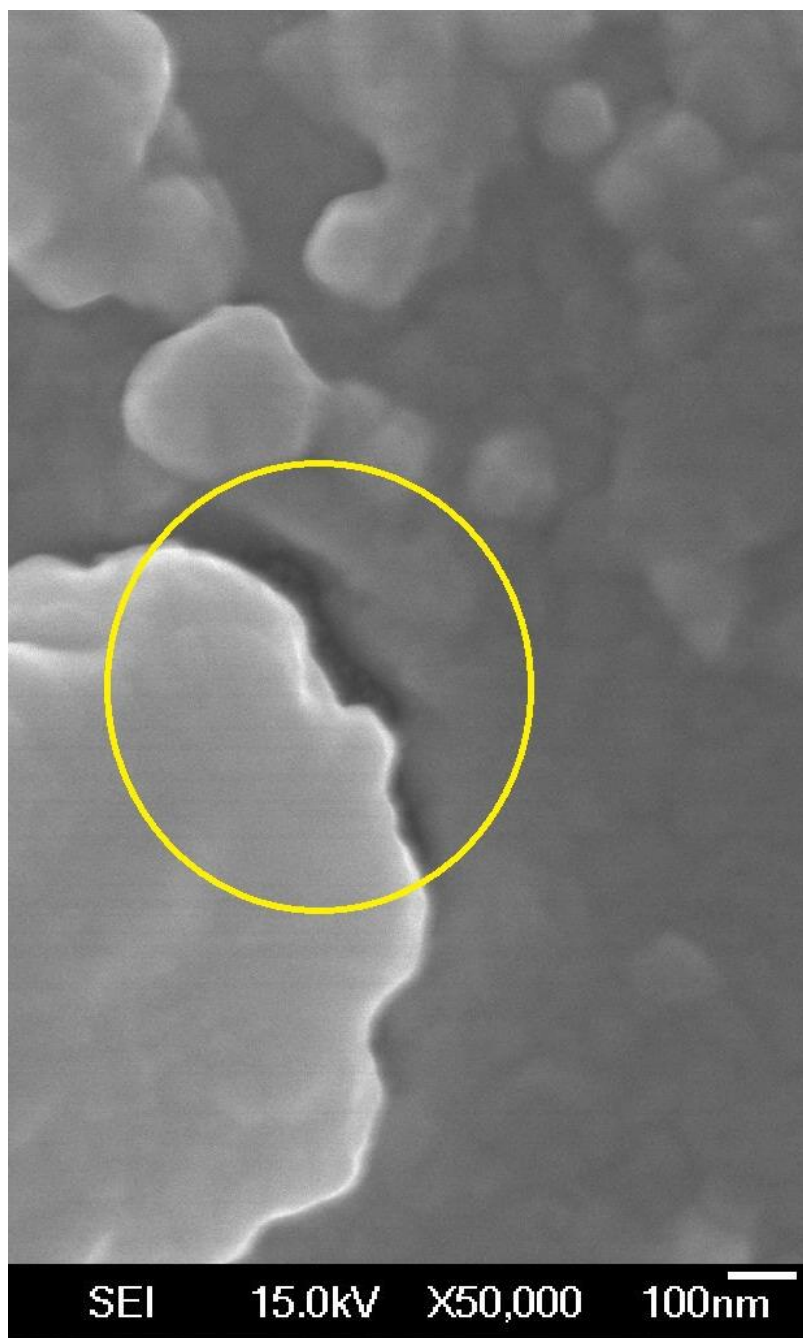


Figure S4. High-resolution SEM images (magnification 50,000 and 200,000) of the cracks in Au layer on TiNi substrate.