

Contents

Figure	Page
Figure S1. HPLC chromatogram of phenolic components in EtOAc extract from <i>T. harzianum</i> AUMC 15440.	3
Figure S2. HPLC chromatogram of phenolic components in EtOAc extract from <i>T. harzianum</i> AUMC 15443.	3
Figure S3. HPLC chromatogram of phenolic components in EtOAc extract from <i>A. aureolatus</i> AUMC 15441.	4
Figure S4. HPLC chromatogram of phenolic components in EtOAc extract from <i>A. aureolatus</i> AUMC 15446.	4
Figure S5. HPLC chromatogram of phenolic components in EtOAc extract from <i>T. nidulans</i> AUMC 15444.	5
Figure S6. HPLC chromatogram of phenolic components in EtOAc extract from <i>A. terreus</i> AUMC 15447.	5
Figure S7. HPLC chromatogram of phenolic components in EtOAc extract from <i>A. terreus</i> AUMC 15448.	6
Figure S8. HPLC chromatogram of phenolic components in EtOAc extract from <i>P. crustosum</i> AUMC 15445.	6
Figure S9. HPLC chromatogram of phenolic components in EtOAc extract from <i>P. novae-zeelandiae</i> AUMC 15442.	7

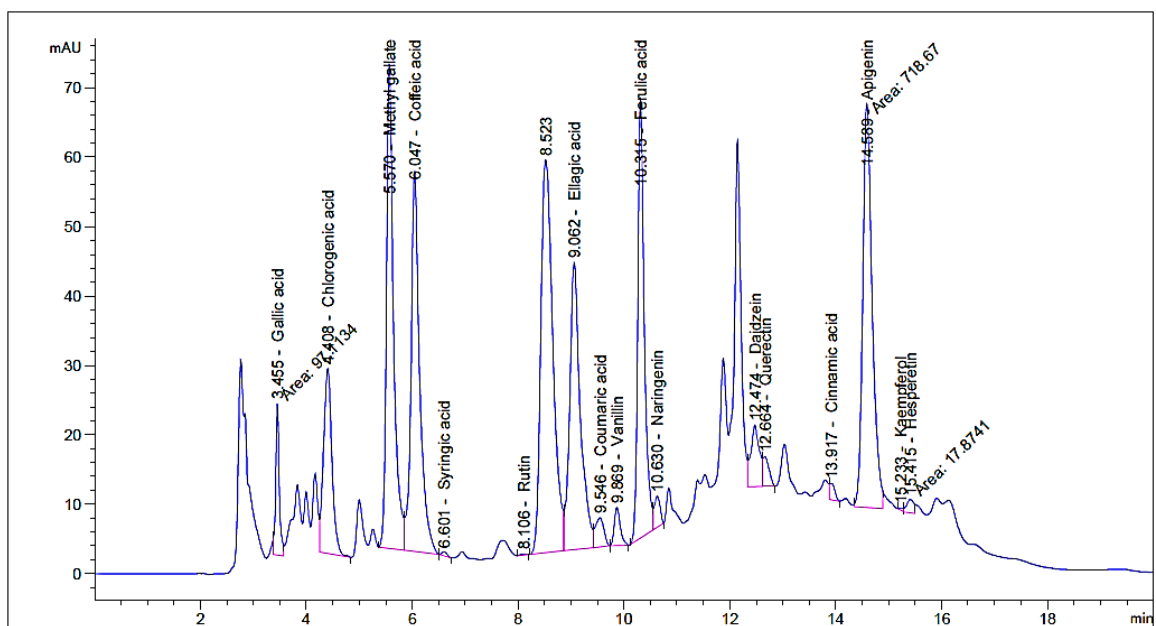


Figure S1. HPLC chromatogram of phenolic components in EtOAc extract from *T. harzianum* AUMC 15440.

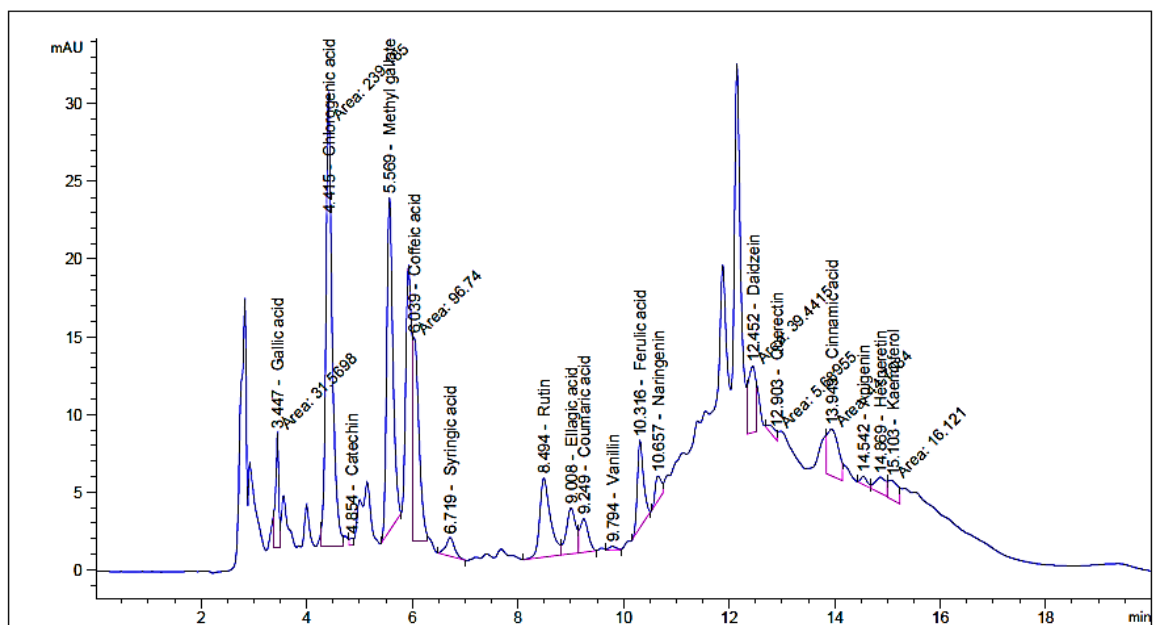


Figure S2. HPLC chromatogram of phenolic components in EtOAc extract from *T. harzianum* AUMC 15443.

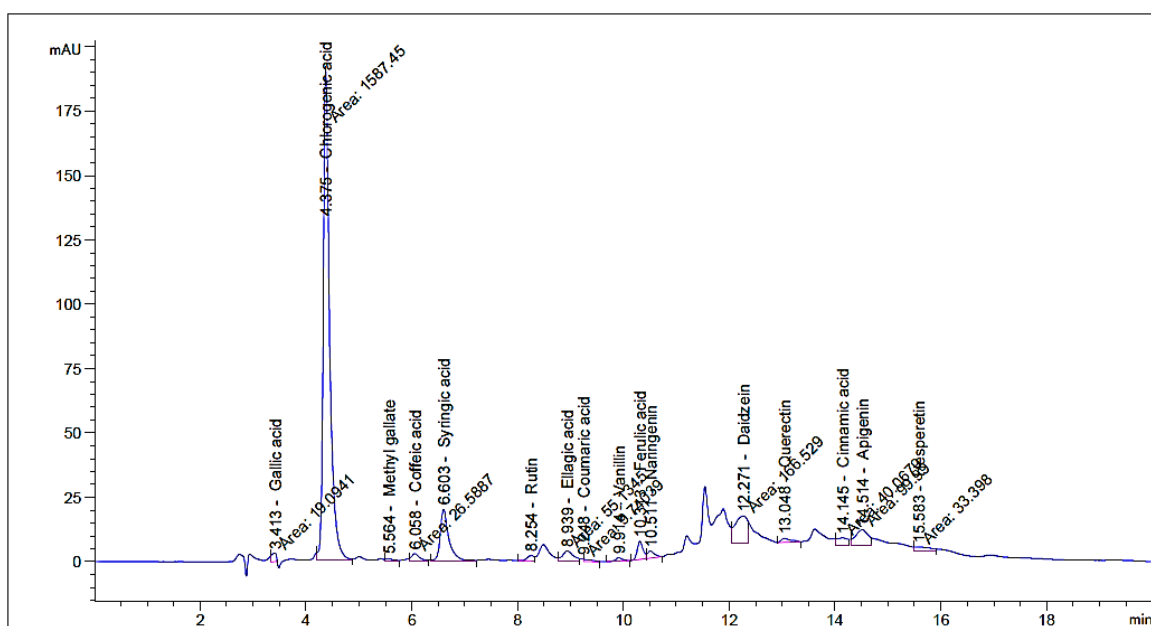


Figure S3. HPLC chromatogram of phenolic components in EtOAc extract from *A. aureolatus* AUMC 15441.

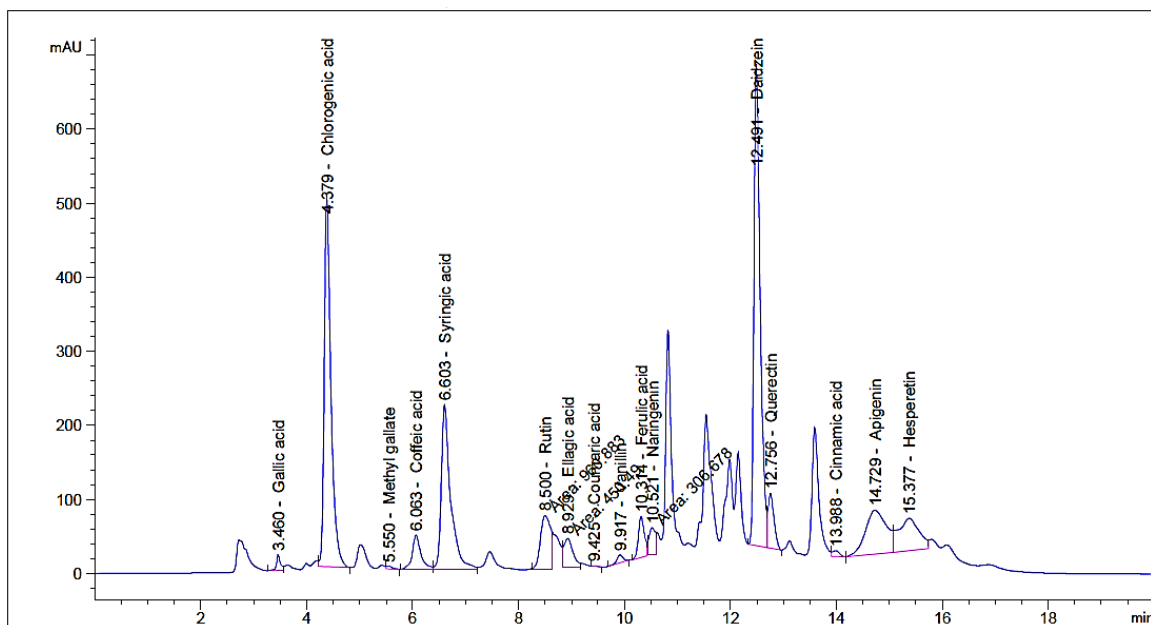


Figure S4. HPLC chromatogram of phenolic components in EtOAc extract from *A. aureolatus* AUMC 15446.

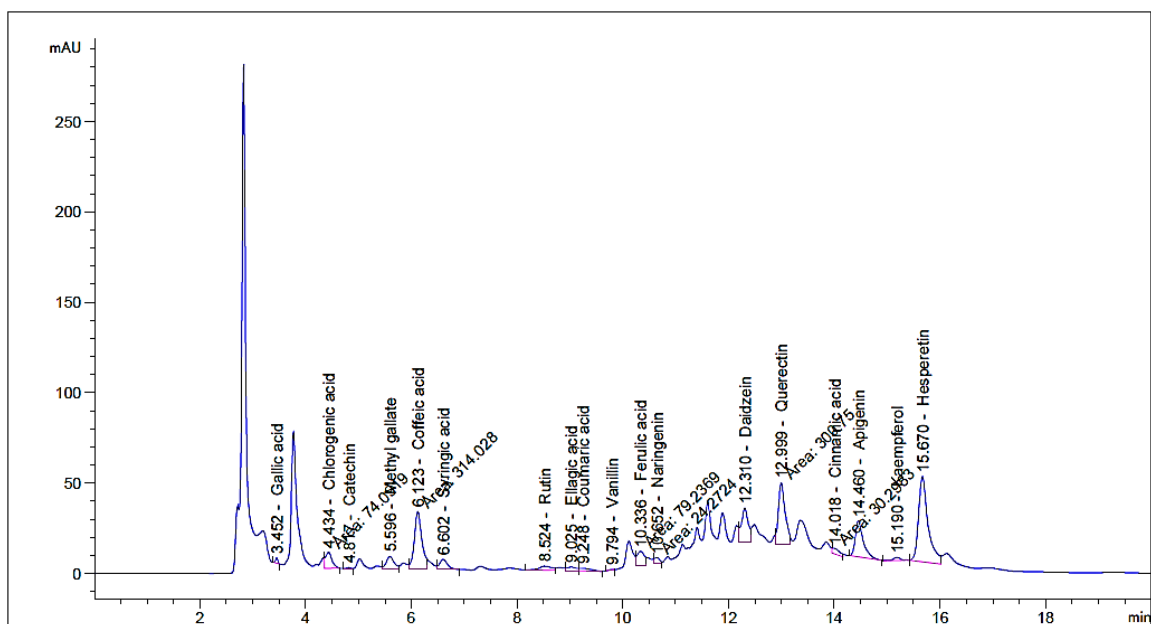


Figure S5. HPLC chromatogram of phenolic components in EtOAc extract from *T. nidulans* AUMC 15444.

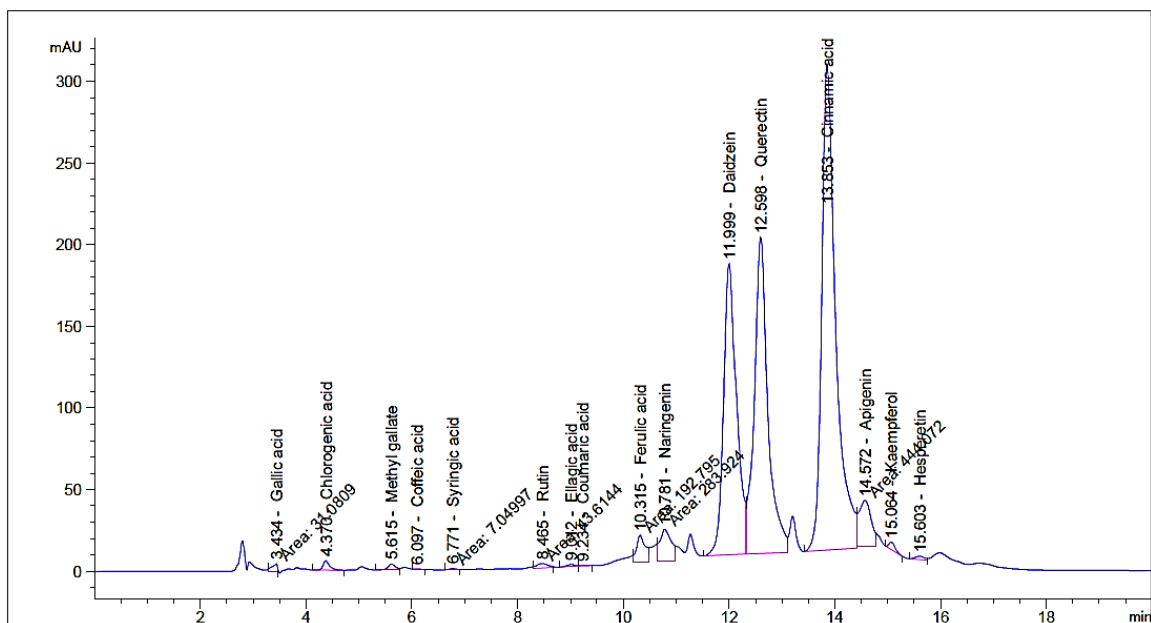


Figure S6. HPLC chromatogram of phenolic components in EtOAc extract from *A. terreus* AUMC 15447.

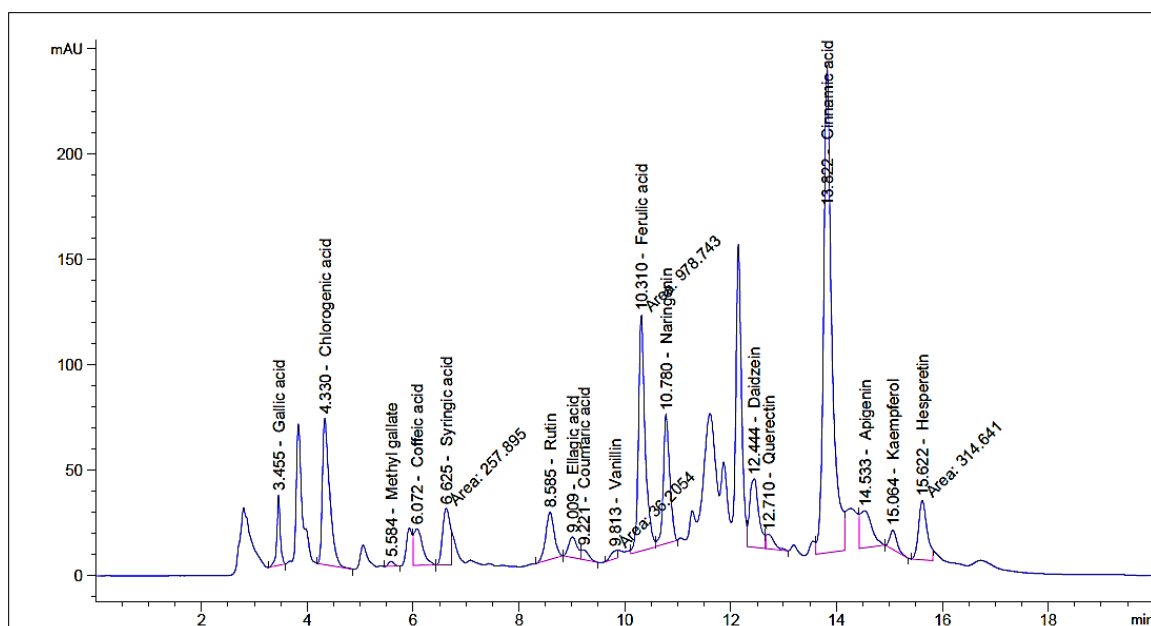


Figure S7. HPLC chromatogram of phenolic components in EtOAc extract from *A. terreus* AUMC 15448.

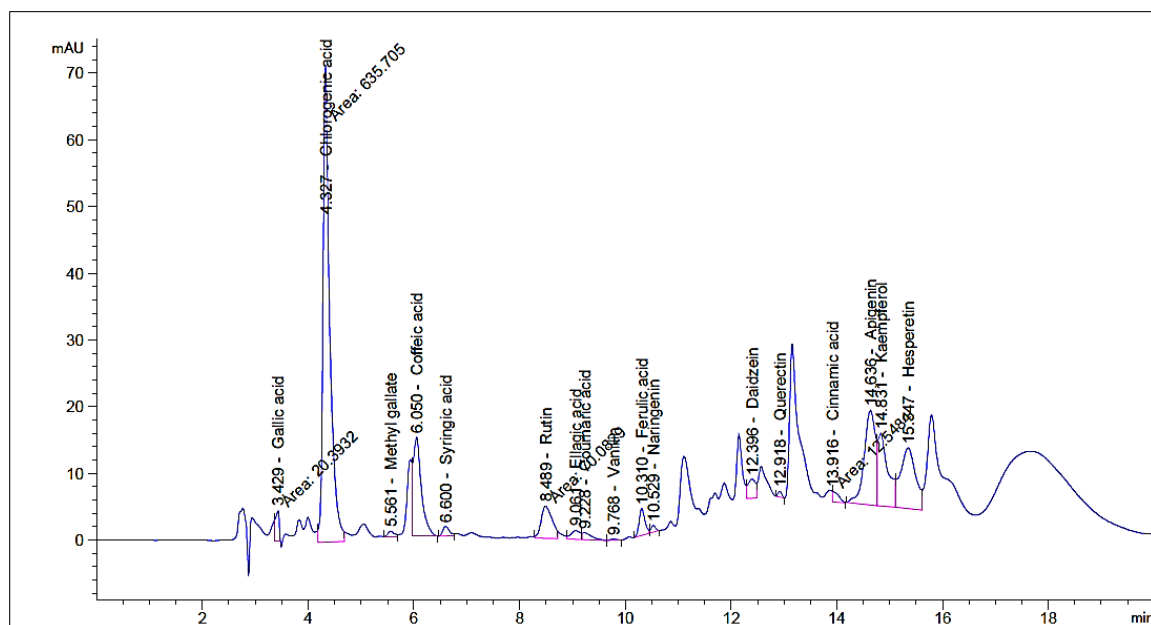


Figure S8. HPLC chromatogram of phenolic components in EtOAc extract from *P. crustosum* AUMC 15445.

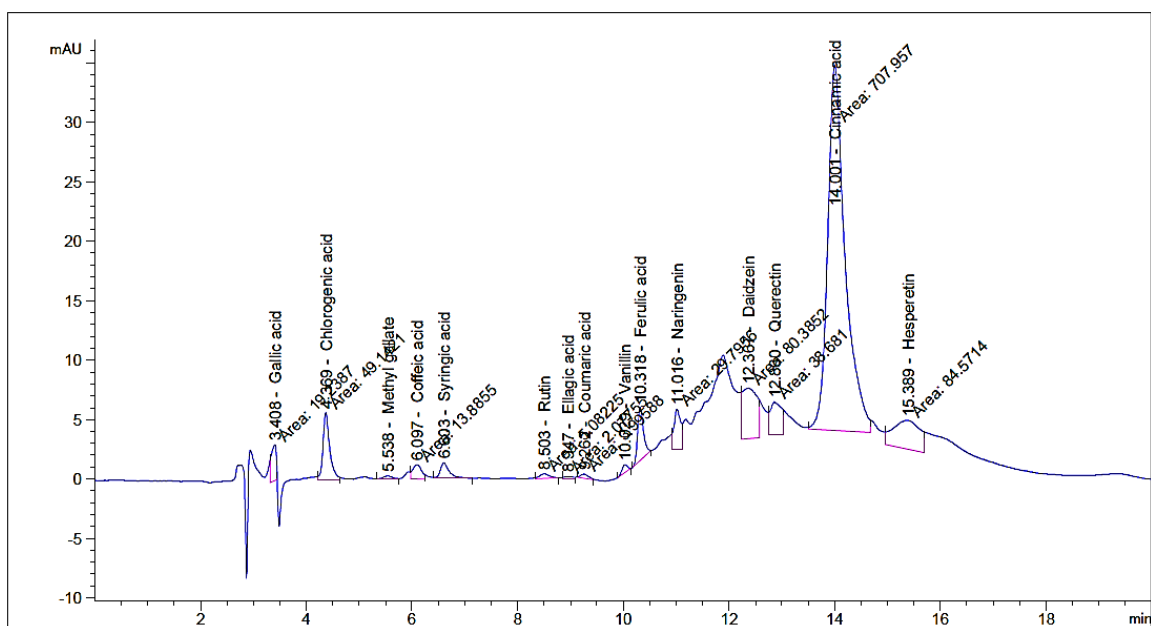


Figure S9. HPLC chromatogram of phenolic components in EtOAc extract from *P. novae-zeelandiae* AUMC 15442.