

Supplementary figures

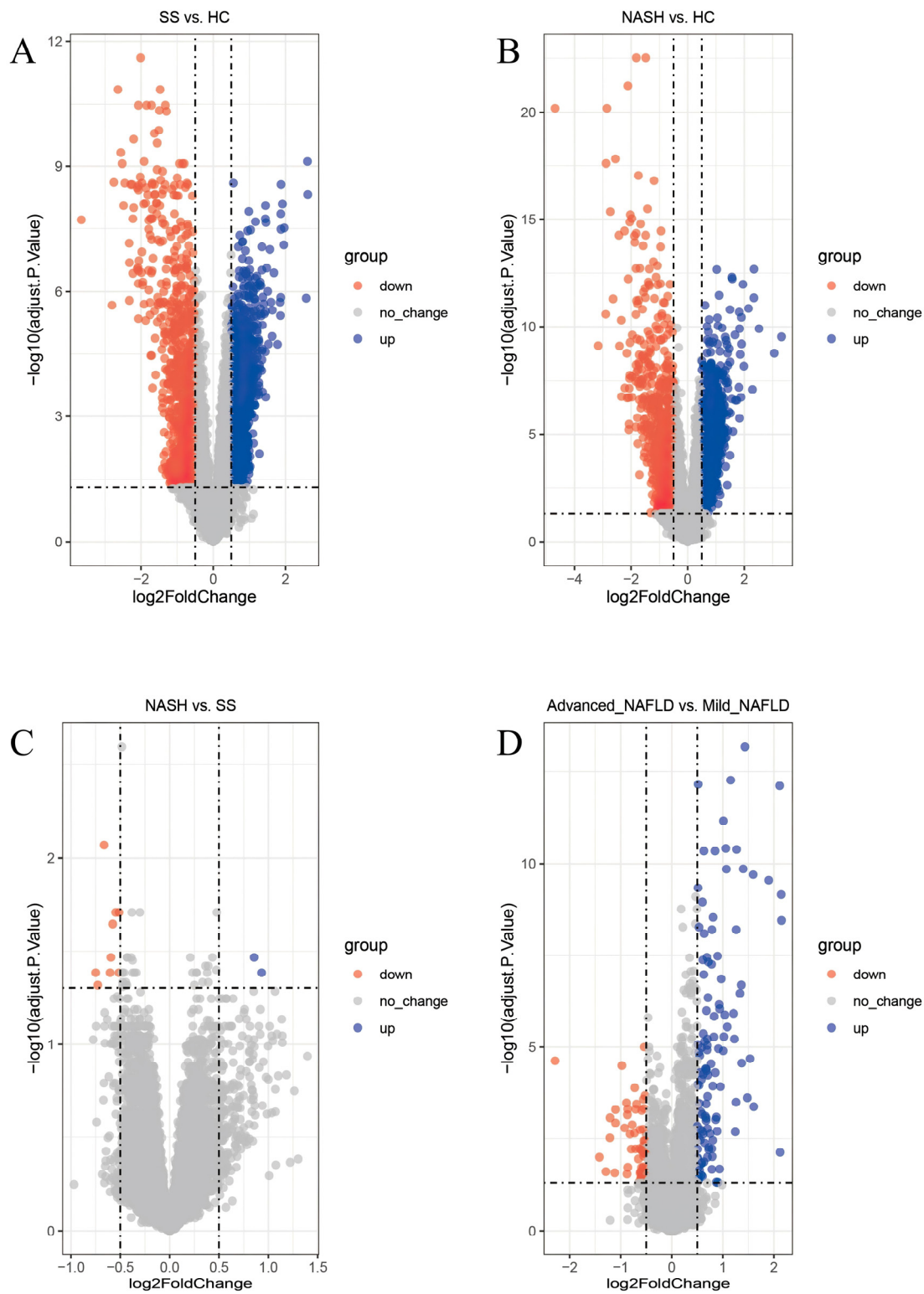


Figure S1. Volcano plots of DEGs from both databases. (A) SS vs. HC. (B) NASH vs. HC. (C) NASH vs. SS. (D) Advanced NAFLD vs. mild NAFLD. Abbreviations: DEGs, differentially expressed genes; SS, simple steatosis; HC, healthy control; NASH, non-alcoholic steatohepatitis; NAFLD, non-alcoholic fatty liver disease.

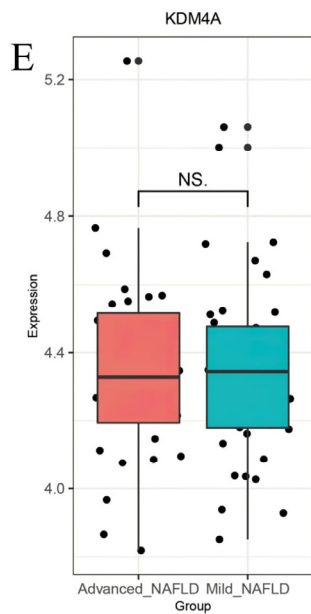
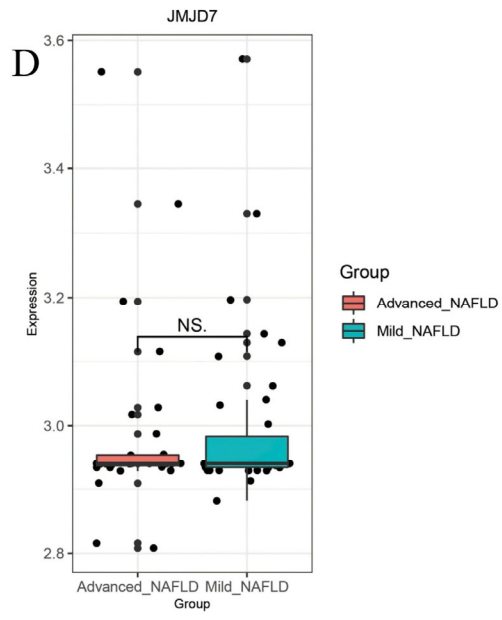
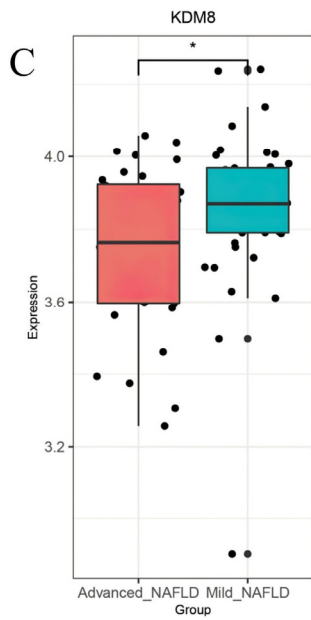
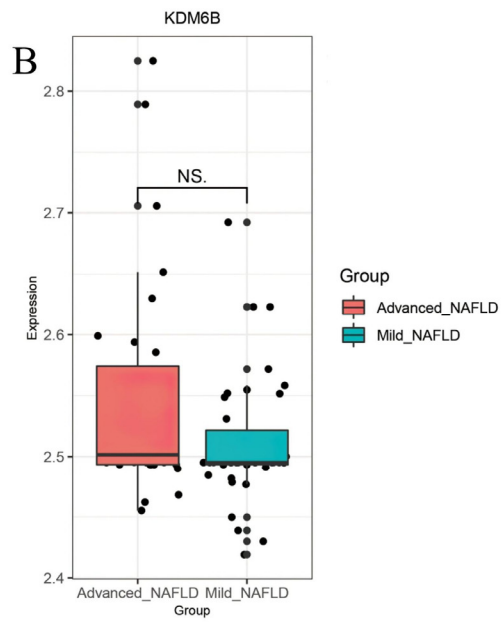
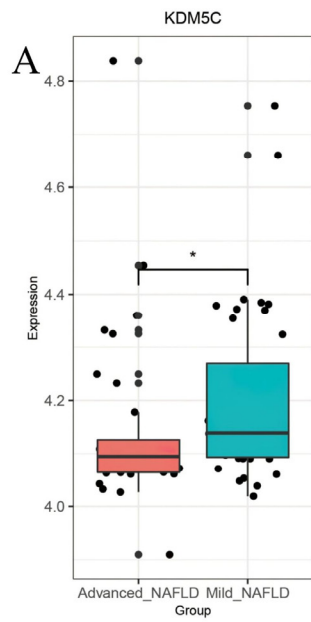


Figure S2. Selected HDM gene expression in the GSE49541 database. Abbreviations: HDM, histone demethylase; NAFLD, non-alcoholic fatty liver disease; NS, not significant. An asterisk indicates that the p-value of < 0.05 .

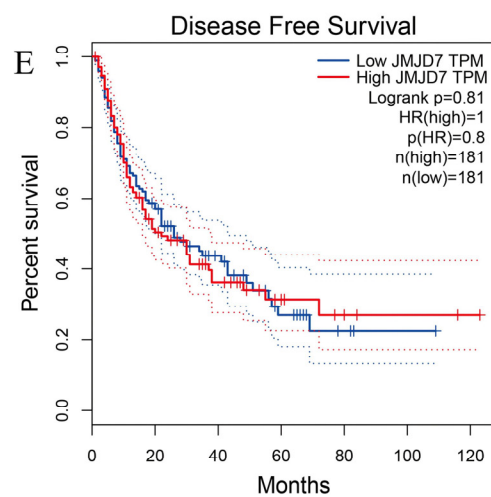
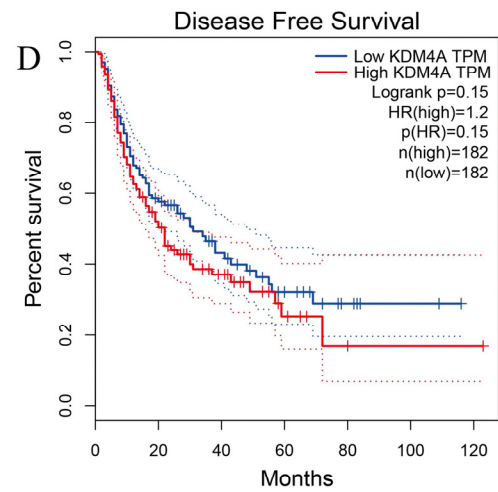
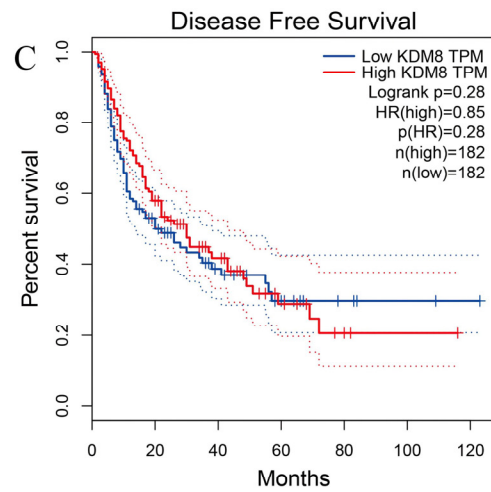
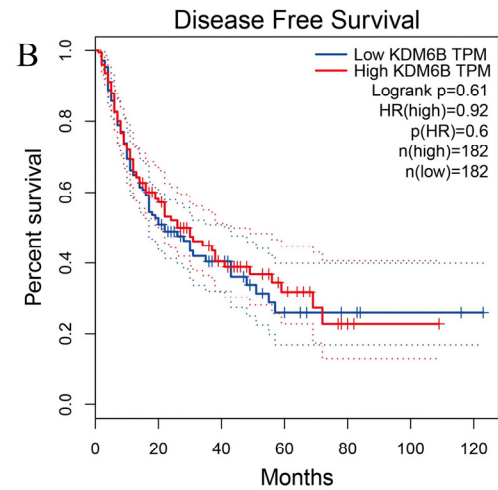
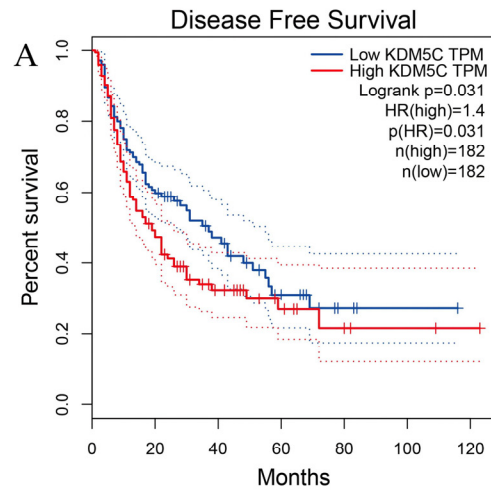


Figure S3. Prognostic values of five HDM genes for disease-free survival in HCC. (A) KDM5C. (B) KDM6B. (C) KDM8. (D) KDM4A. (E) JMJD7. Abbreviations: HDM, histone demethylase; HCC, hepatocellular carcinoma; TPM, Transcripts Per Million; HR, hazard ratio.

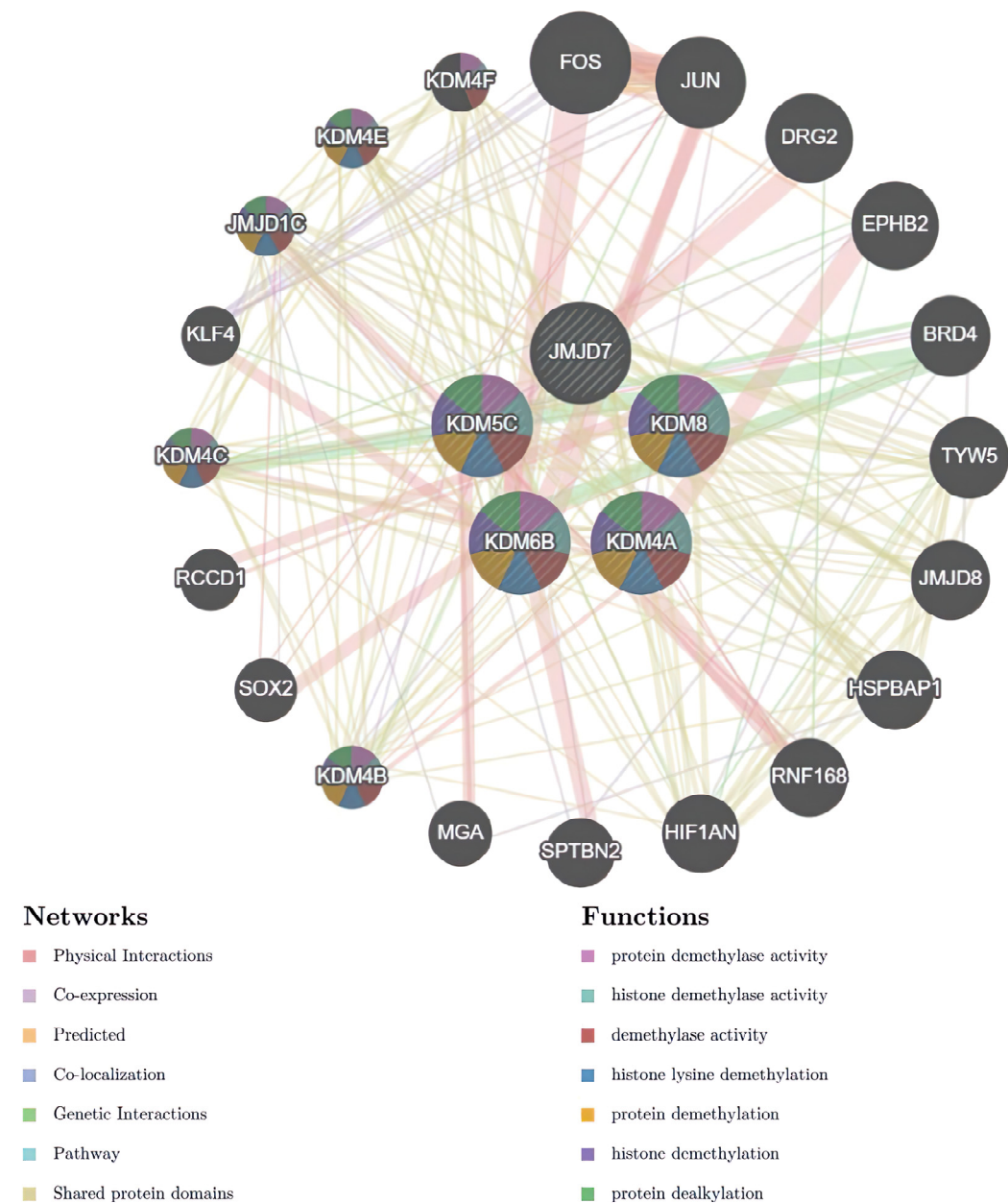


Figure S4. Networks and functional associations of selected HDM genes with the 20 strongest genes identified in the genemania database. Abbreviations: HDM, histone demethylase.

