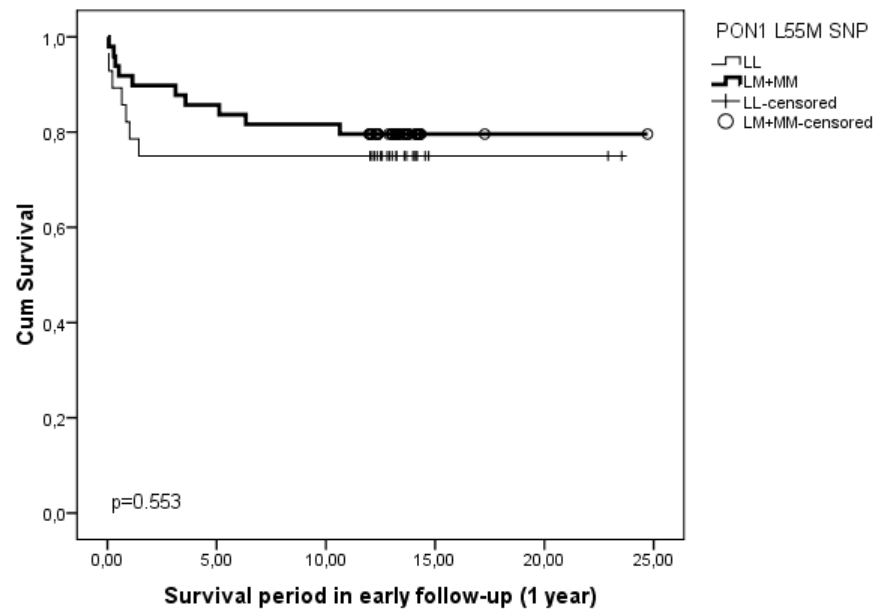
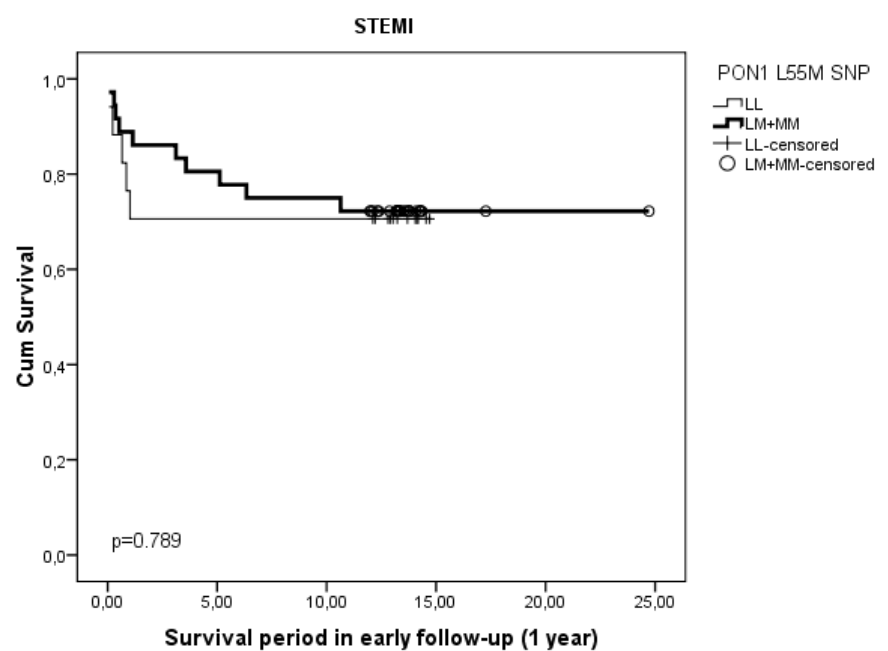


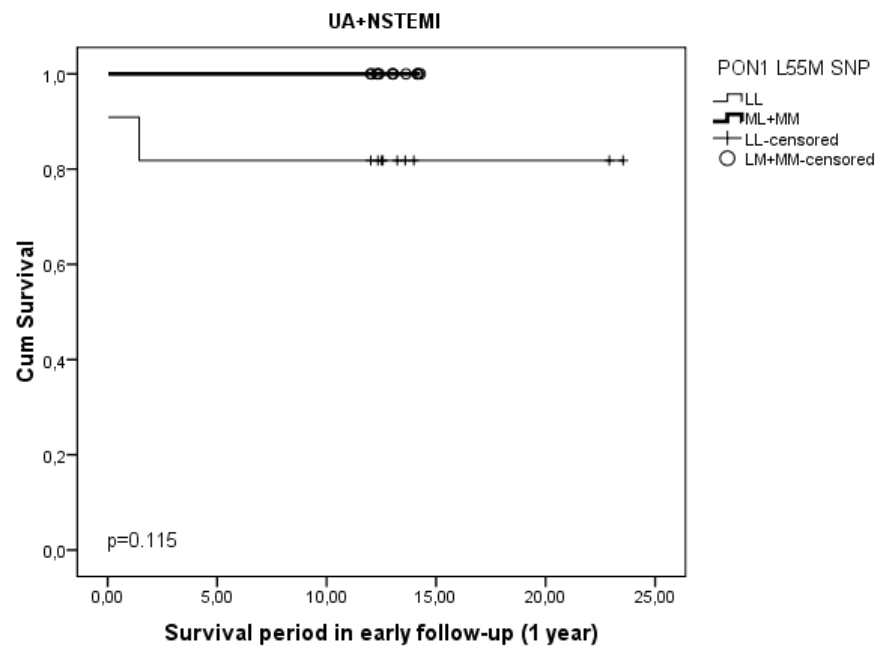
**Figure S1.** The Kaplan Mayer survival curves of patients with different PON1 L55M genotypes and diagnosis after 1 year of follow-up period. 3A- the whole group with ACS; 3B-patients with STEMI; 3C – patients with NSTEACS.



**Figure S1. A.**



**Figure S1. B.**



**Figure S1. C.**

**Figure S2.** The Kaplan Mayer survival curves for 5 year (4A) and 9 year (4B) follow-up of the patients from the whole group with ACS but with different PON1 L55M genotypes. 4C- The Kaplan Mayer survival curves for 9 year follow-up of the patients with NSTEMACS but with different PON1 L55M genotypes.

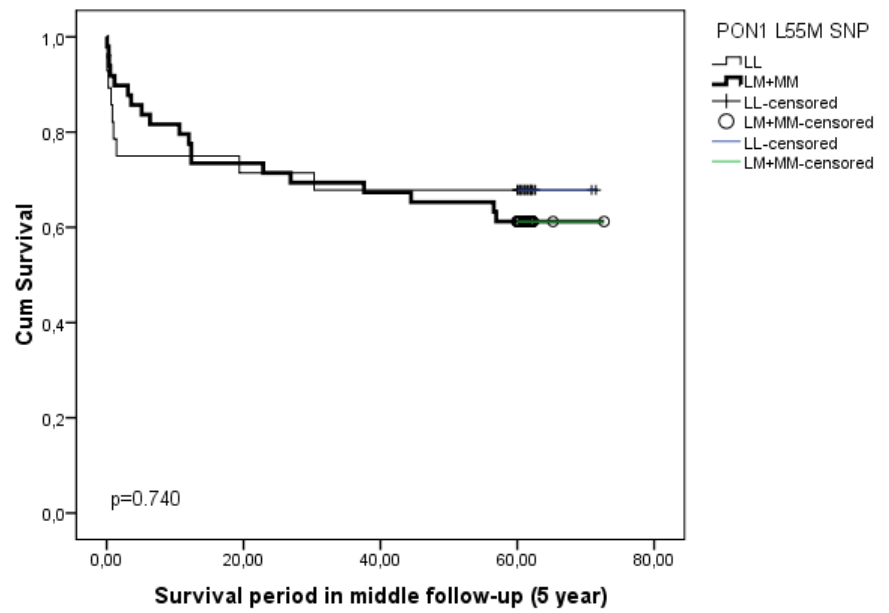


Figure S2. A.

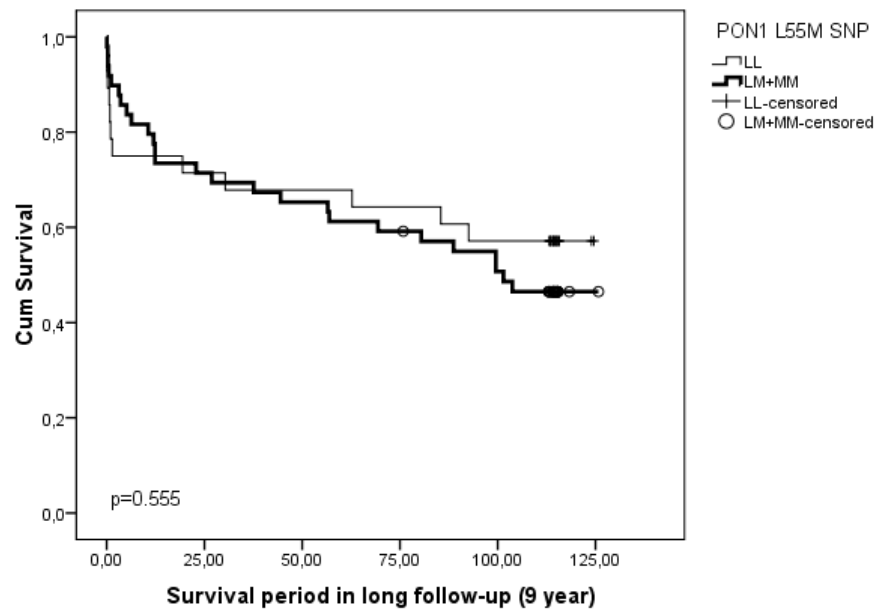
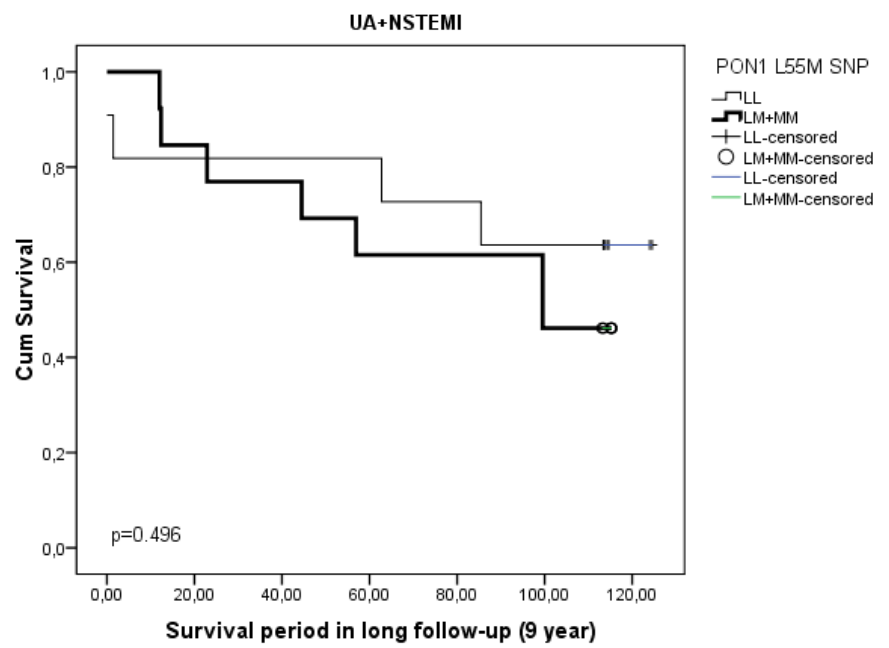


Figure S2. B.



**Figure S2. C.**