

Article

Spectroscopic and Colorimetric Studies for Anions with a New Urea-Based Molecular Cleft

Sanchita Kundu, Tochukwu Kevin Egboluche, Zehra Yousuf and Md. Alamgir Hossain *

Department of Chemistry, Physics and Atmospheric Sciences, Jackson State University, Jackson, MS 29217, USA; sanchita.v23@gmail.com (S.K.); tochukwuKevin1986@gmail.com (T.K.E.); zayousuf9@gmail.com (Z.Y.)

* Correspondence: alamgir.hossain@jsums.edu

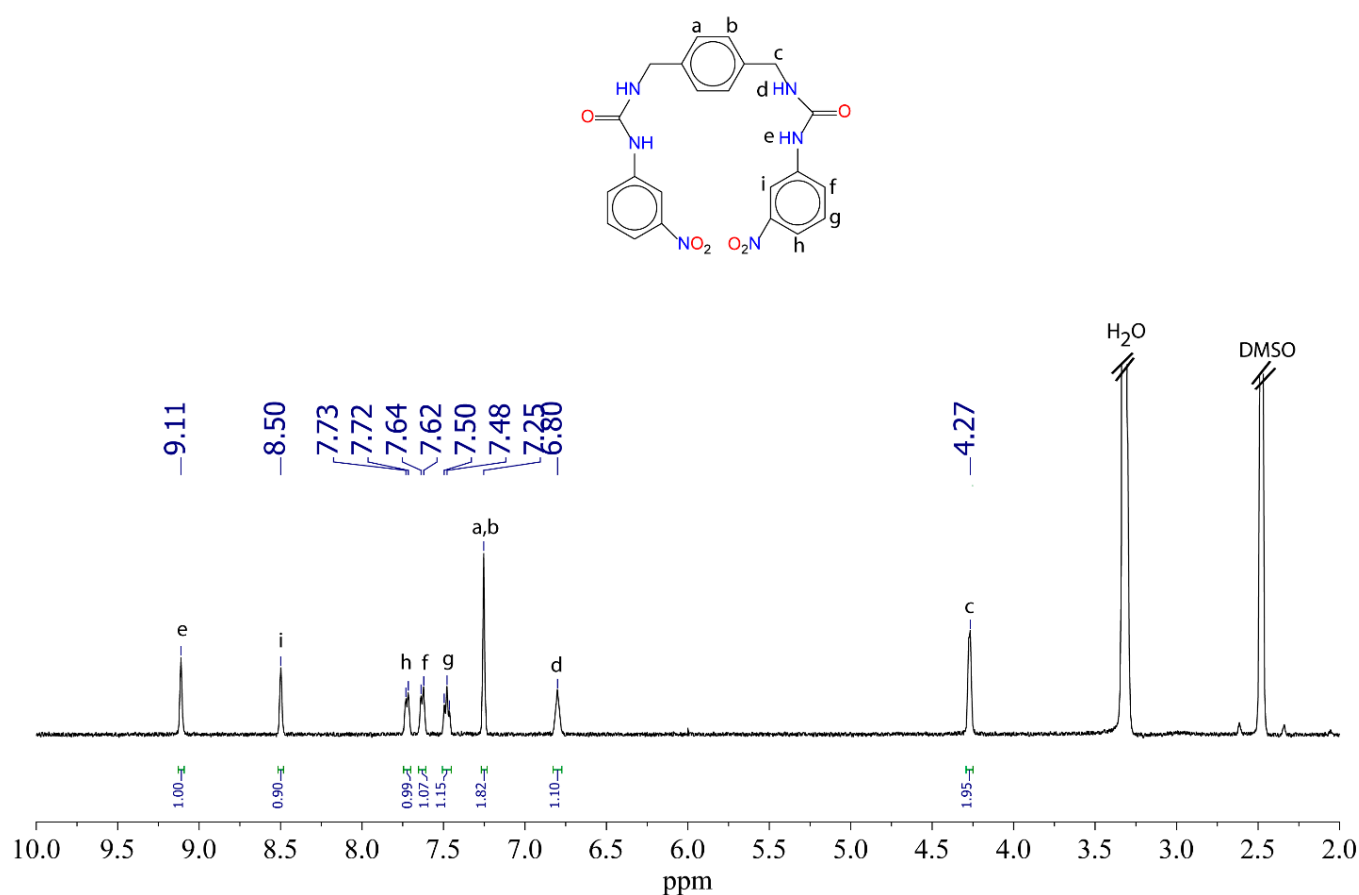


Figure S1. ^1H NMR characterization of L in DMSO-d_6 .

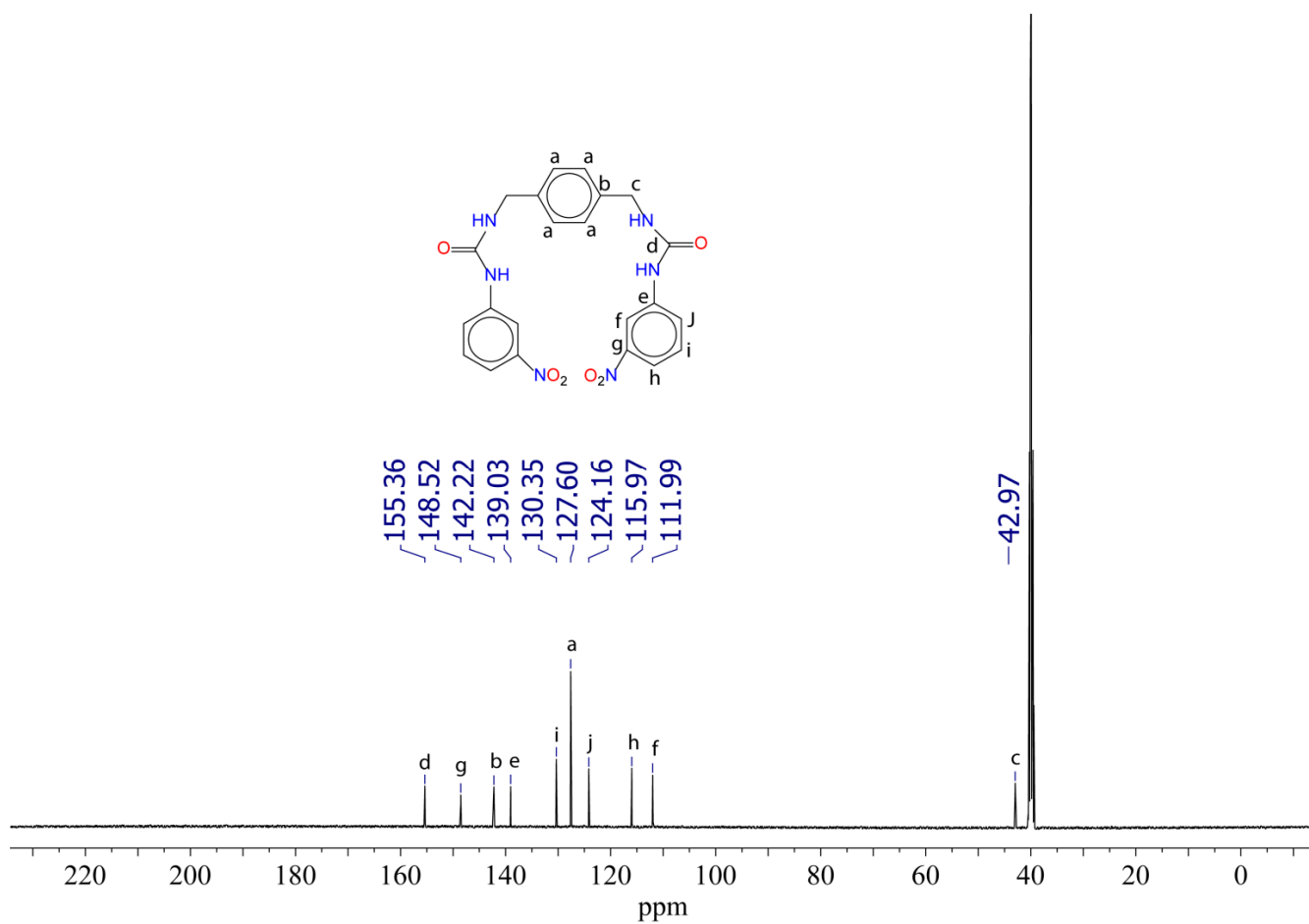


Figure S2. ^{13}C NMR characterization of **L** in DMSO-d_6 .

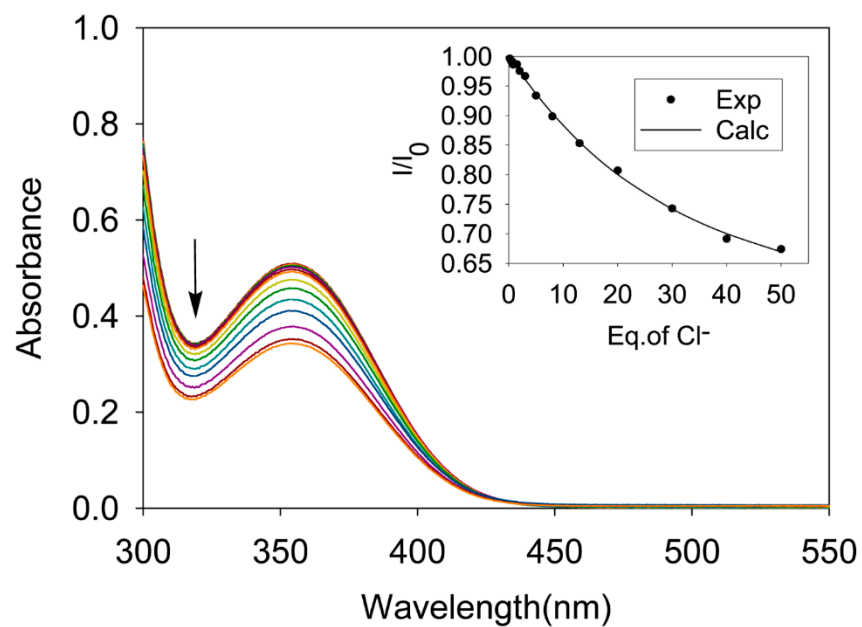


Figure S3. UV-Vis titration of **L** ($1.25 \times 10^{-4} \text{ M}$) with incremental addition of *n*-TBACl in DMSO . Binding isotherm is calculated using 1:2 binding model.

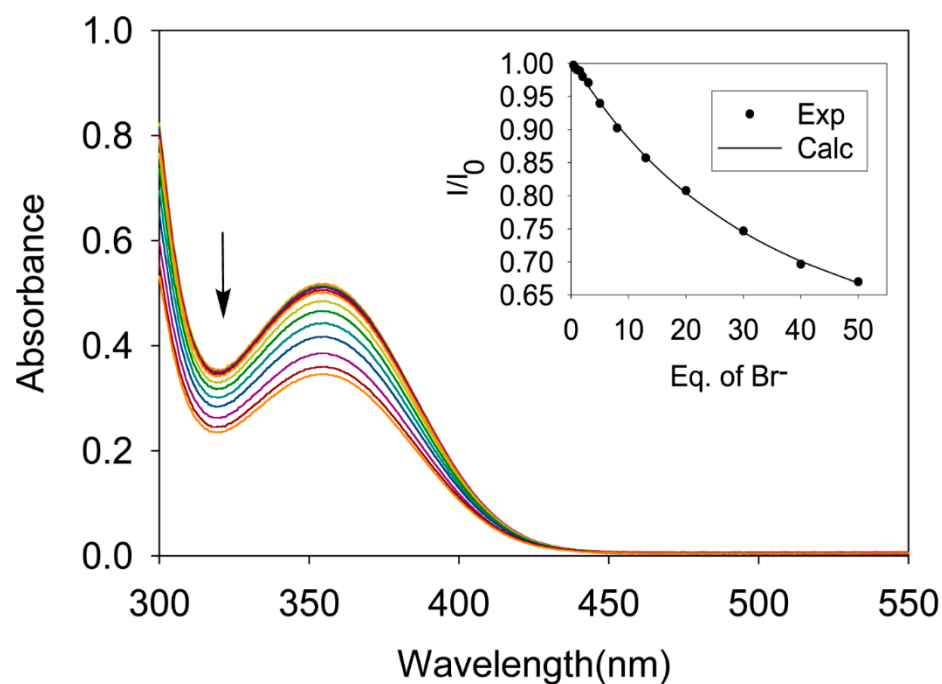


Figure S4. UV-Vis titration of **L** ($1.25 \times 10^{-4} \text{ M}$) with incremental addition of *n*-TBABr in DMSO. Binding isotherm is calculated using 1:2 binding model.

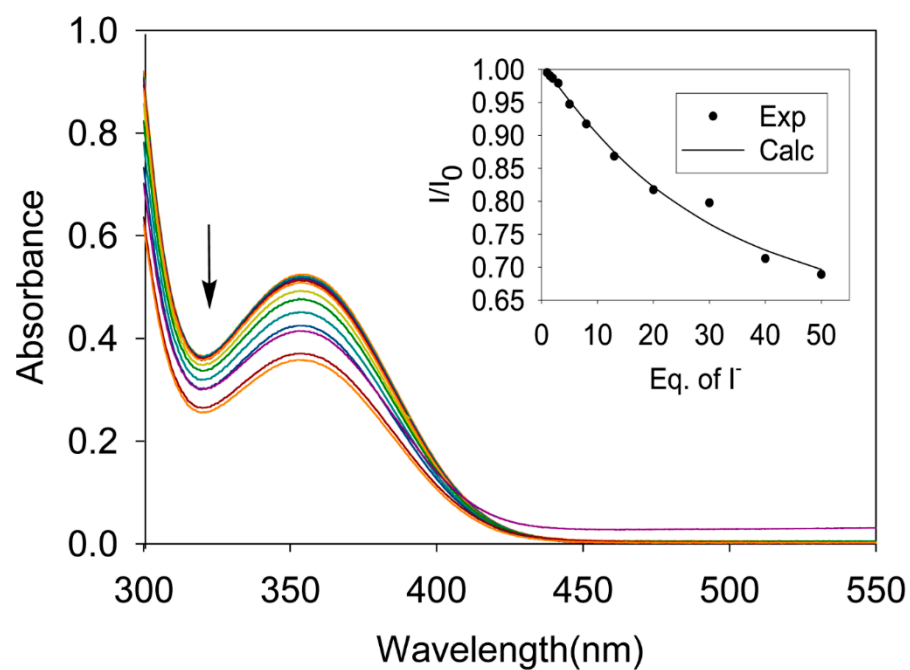


Figure S5. UV-Vis titration of **L** ($1.25 \times 10^{-4} \text{ M}$) with incremental addition of *n*-TBAI in DMSO. Binding isotherm is calculated using 1:2 binding model.

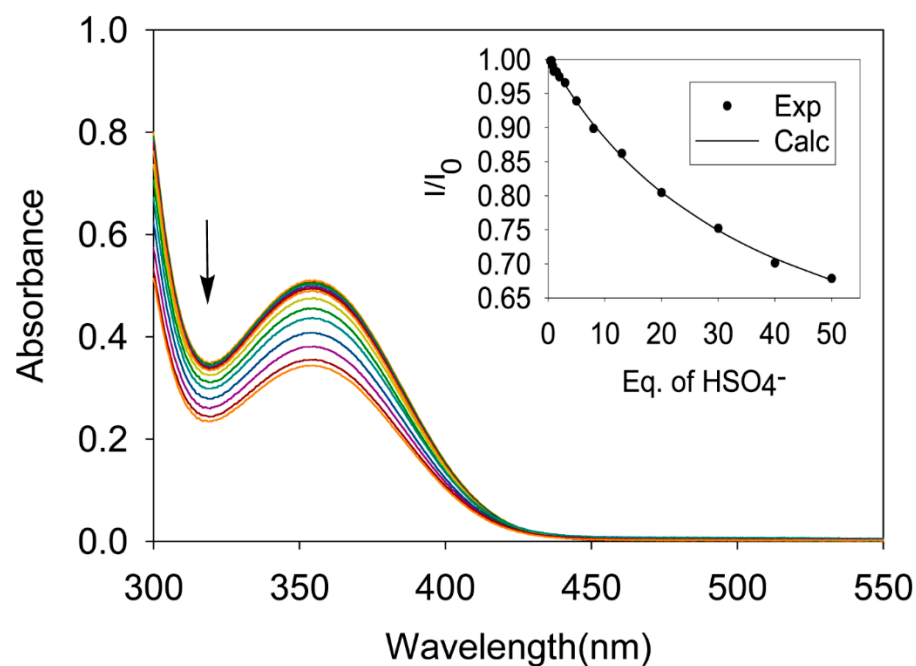


Figure S6. UV-Vis titration of L (1.25 × 10⁻⁴ M) with incremental addition of *n*-TBAHSO₄ in DMSO. Binding isotherm is calculated using 1:2 binding model.

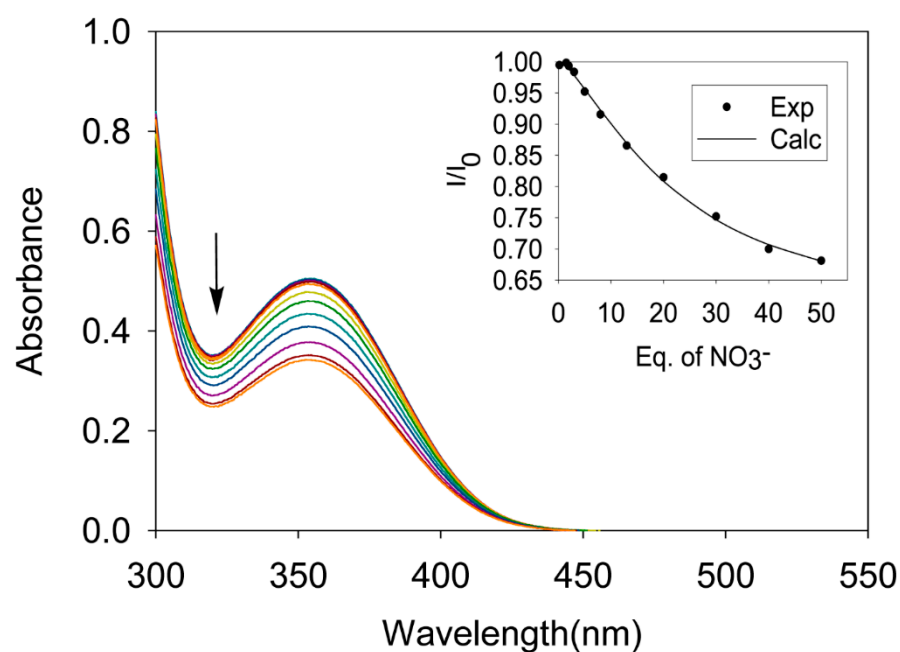


Figure S7. UV-Vis titration of L (1.25 × 10⁻⁴ M) with incremental addition of *n*-TBANO₃ in DMSO. Binding isotherm is calculated using 1:2 binding model.

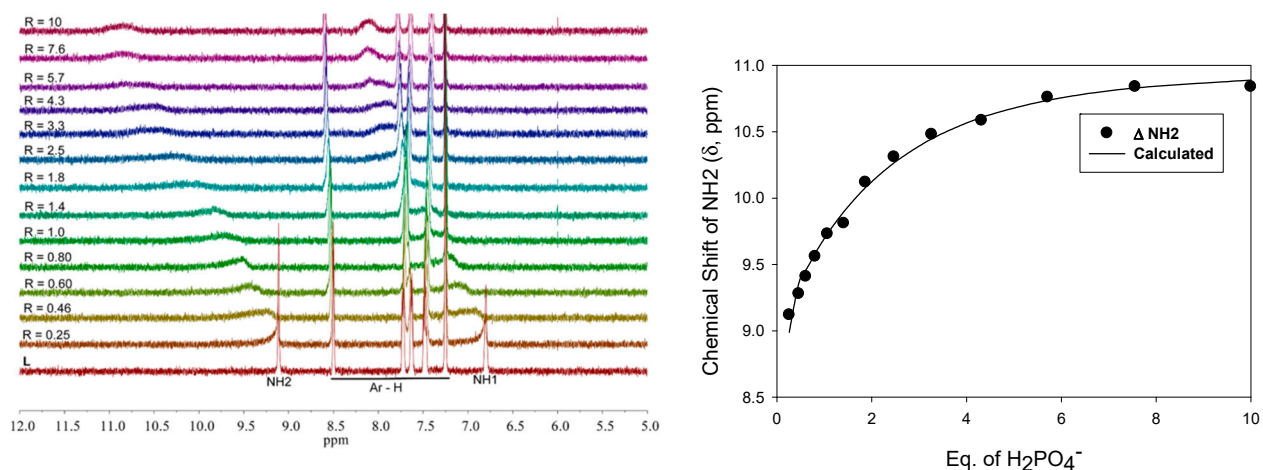


Figure S8. ^1H NMR titration of L (2mM) with incremental addition of $n\text{-TBAH}_2\text{PO}_4$ in DMSO-d_6 . Binding isotherm is calculated using 1:2 binding model.

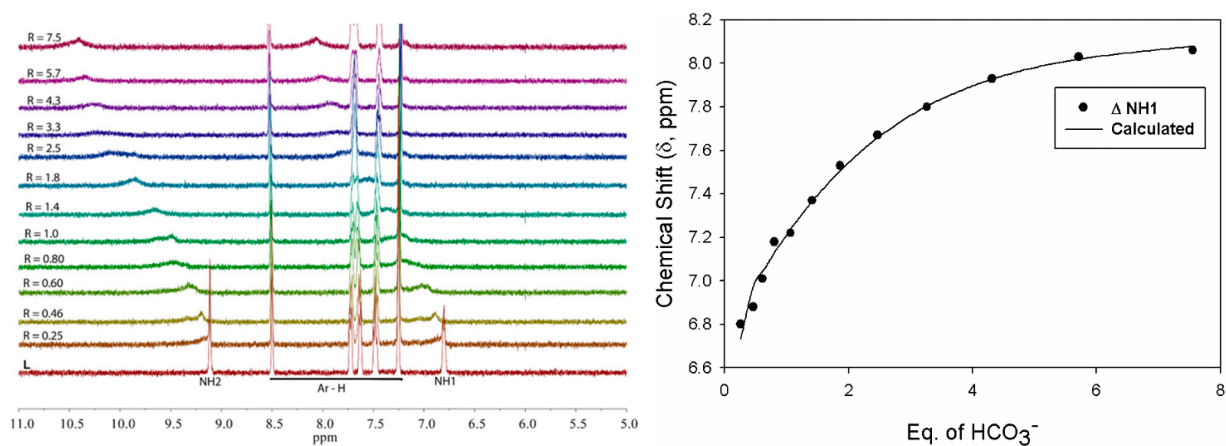


Figure S9. ^1H NMR titration of L (2mM) with incremental addition of TEAHCO_3 in DMSO-d_6 . Binding isotherm is calculated using 1:2 binding model.

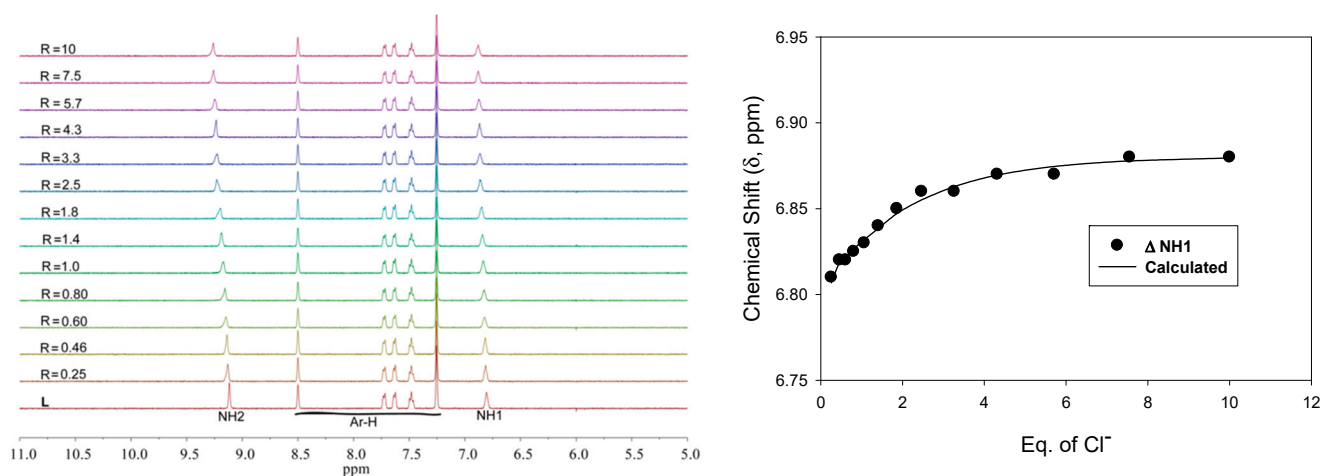


Figure S10. ^1H NMR titration of L (2mM) with incremental addition of $n\text{-TBACl}$ in DMSO-d_6 . Binding isotherm is calculated using 1:2 binding model.

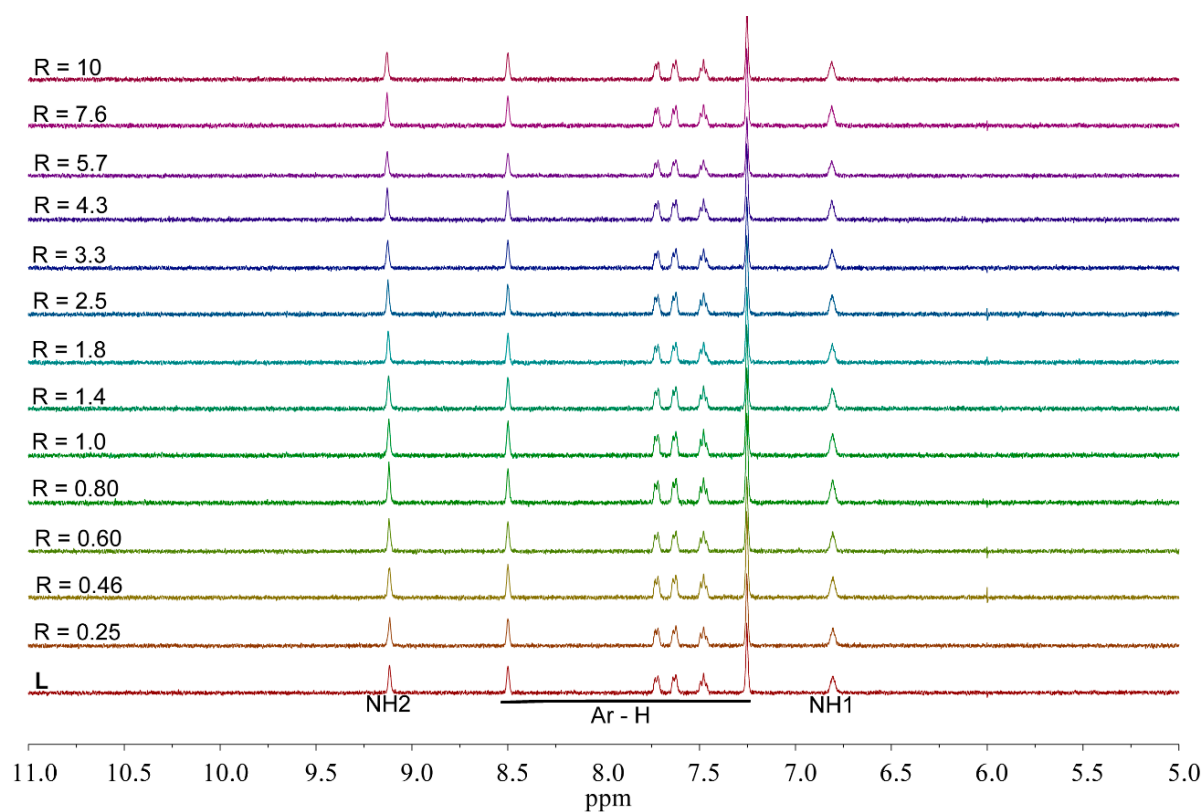


Figure S11. ^1H NMR titration of L (2mM) with incremental addition of *n*-TBABr in DMSO-d_6 .

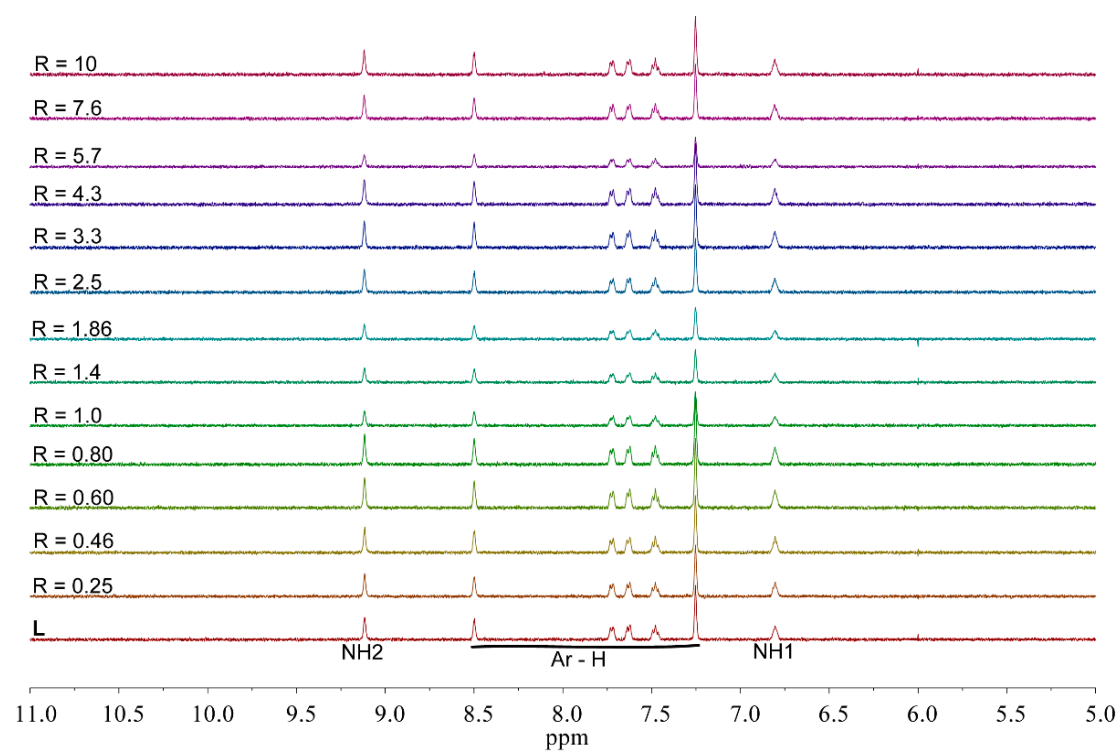


Figure S12. ^1H NMR titration of L (2mM) with incremental addition of *n*-TBAI in DMSO-d_6 .

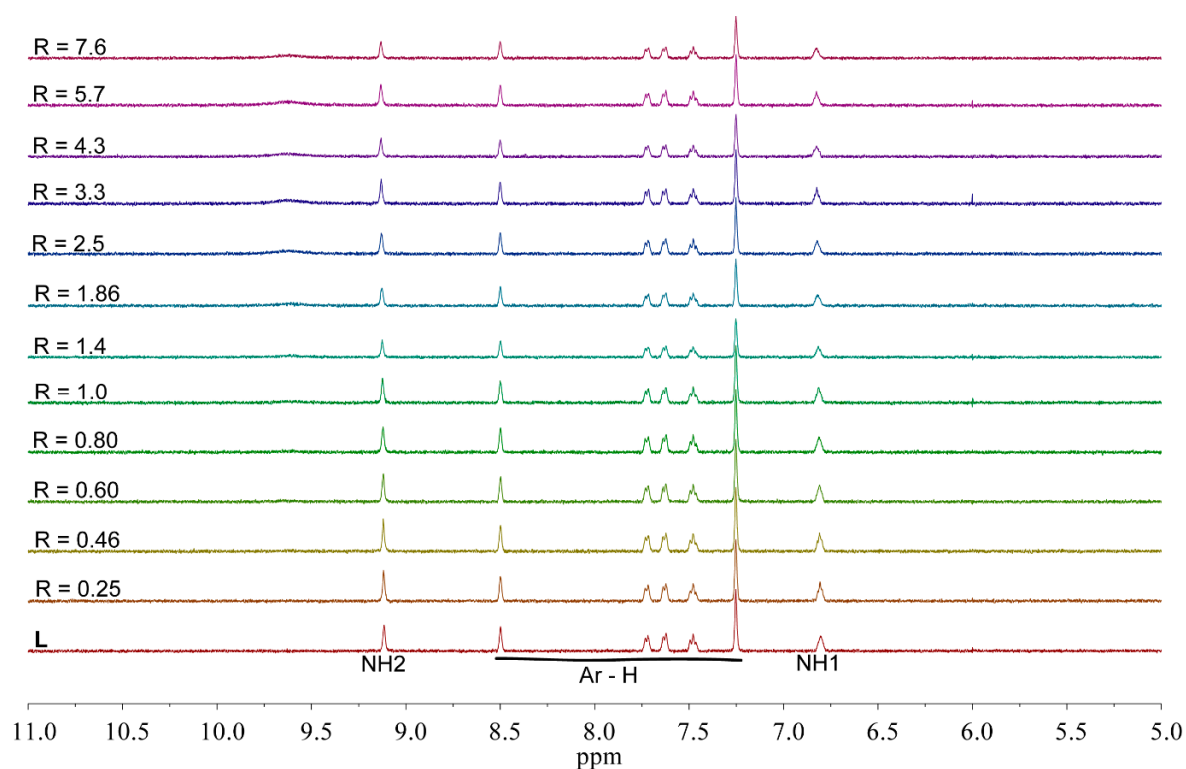


Figure S13. ^1H NMR titration of **L** (2mM) with incremental addition of *n*-TBAHSO₄ in DMSO-*d*₆.

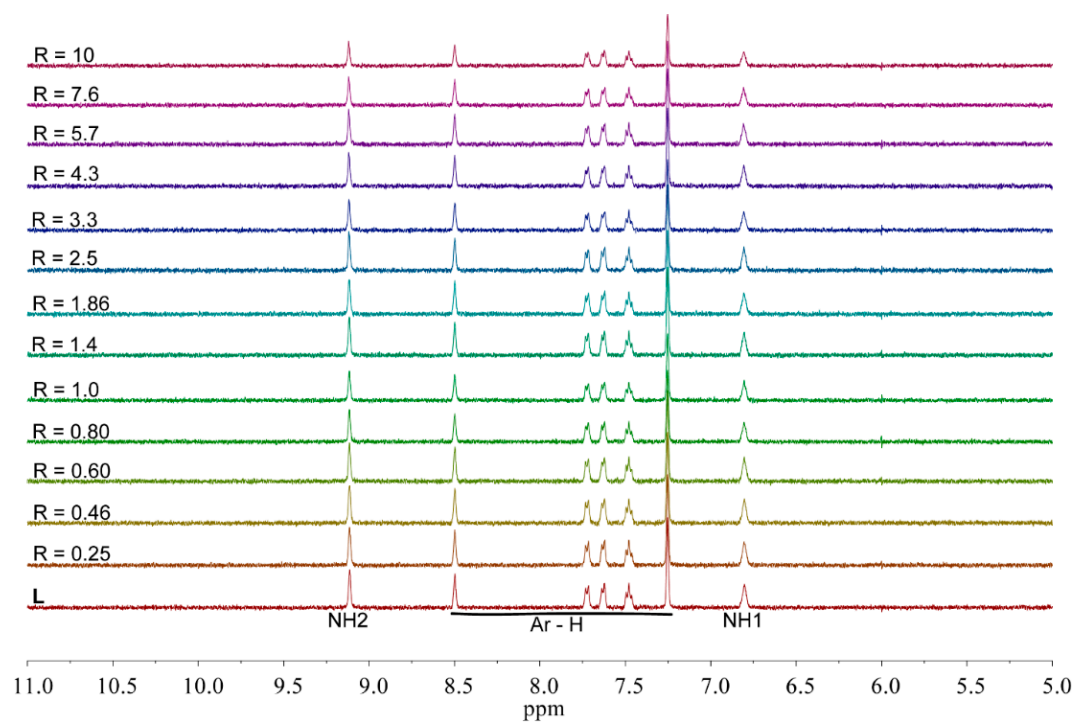


Figure S14. ^1H NMR titration of **L** (2mM) with incremental addition of *n*-TBANO₃ in DMSO-*d*₆.