

Supporting Information

Umbelliferone-based fluorescent probe for selective recognition of hydrogen sulfide and its bio-imaging in living cells and zebrafish

1. NMR and ESI-HRMS Spectra

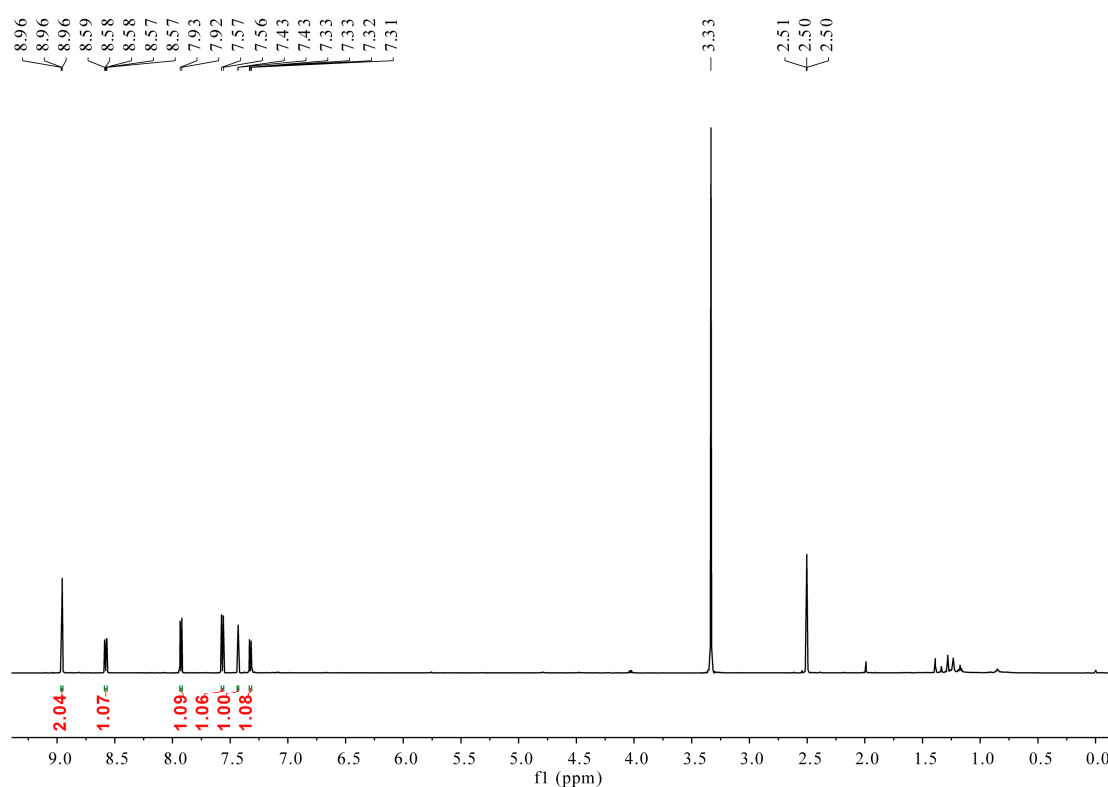


Figure S1. ¹H NMR spectrum (600 MHz, DMSO-*d*₆) of **1** at 298 K.

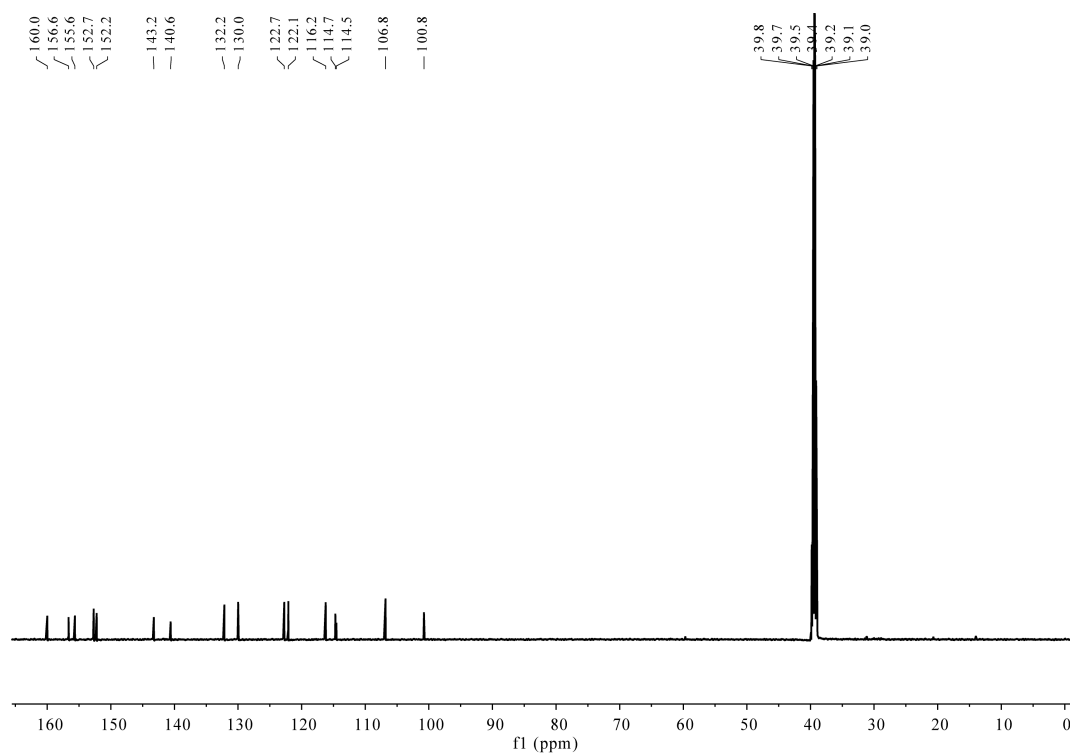


Figure S2. ^{13}C NMR spectrum (151 MHz, CDCl_3) of **1** at 298 K.

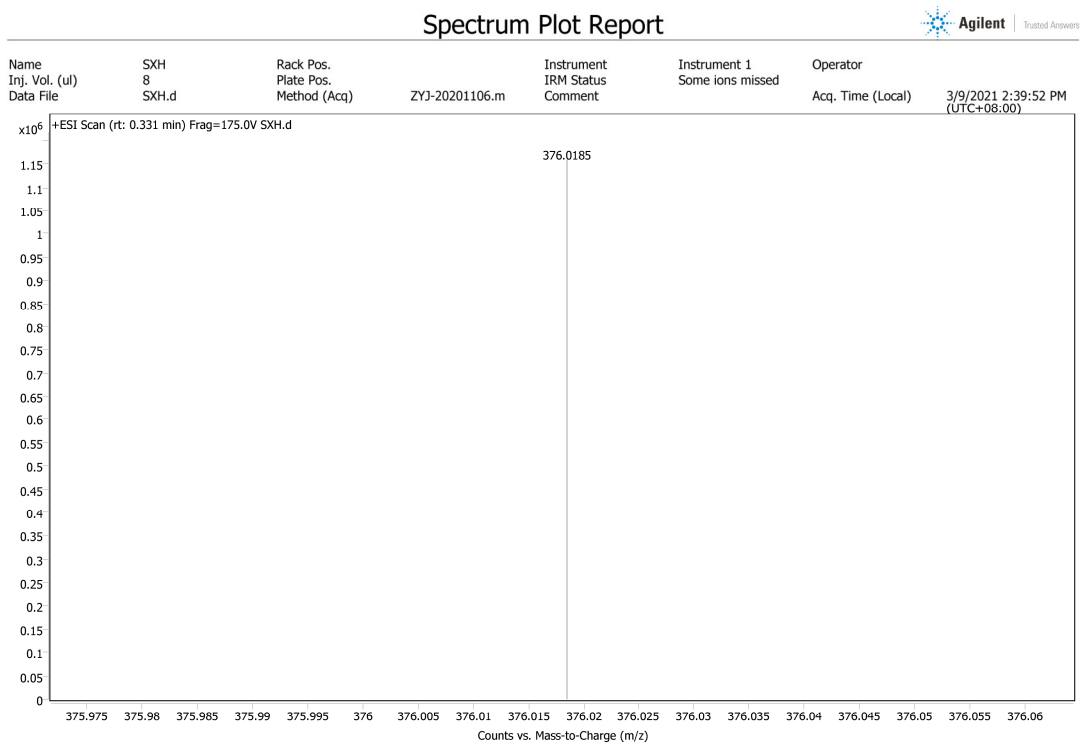


Figure S3. ESI-HRMS spectrum of **1**.

S #2685 RT: 8.75 AV: 1 NL: 3.09E8

F: FTMS - p ESI d Full ms2 186.0194@hcd15.00 [50.0000-210.0000]

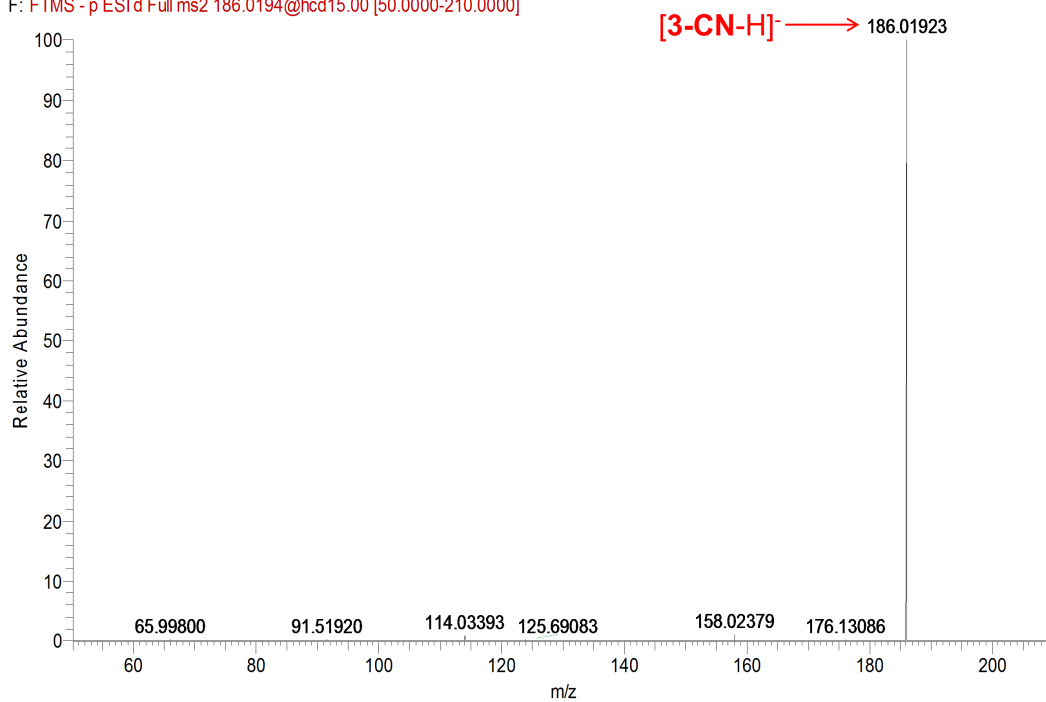


Figure S4. ESI-HRMS spectrum of the mixture of **1** and H₂S.