

Rapid On-Site Detection of Illicit Drugs in Smuggled Samples with a Portable Electrochemical Device [†]

Marc Parrilla ^{1,2}, Amorn Slosse ³, Robin Van Echelpoel ^{1,2}, Noelia Felipe Montiel ^{1,2}, Amelia R. Langley ^{1,2}, Filip Van Durme ³ and Karolien De Wael ^{1,2,*}

¹ A-Sense Lab, Department of Bioscience Engineering, University of Antwerp, Groenenborgerlaan 171, 2020 Antwerp, Belgium; marc.parrillapons@uantwerpen.be (M.P.); robin.vanechelpoel@uantwerpen.be (R.V.E.); oelia.felipemontiel@uantwerpen.be (N.F.M.); amelia.langley@uantwerpen.be (A.R.L.)

² NANOlaboratory Center of Excellence, University of Antwerp, Groenenborgerlaan 171, 2020 Antwerp, Belgium

³ Drugs and Toxicology Department, National Institute for Criminalistics and Criminology (NICC), Vilvoordsesteenweg 100, 1120 Brussels, Belgium; amorn.slosse@just.fgov.be (A.S.); filip.vandurme@just.fgov.be (F.V.D.)

* Correspondence: karolien.dewael@uantwerpen.be; Tel.: +32-32653335

[†] This paper is an extended version of the paper Portable Electrochemical Detection of Illicit Drugs in Smuggled Samples: Towards More Secure Borders. In Proceedings of the 1st International Electronic Conference on Chemical Sensors and Analytical Chemistry, 1–15 July 2021.

Table of contents

Figures	SM-2
<i>Figure S1.</i> Example of the interface displayed	SM-2
<i>Figure S2.</i> Electrochemical profiles from SWV (raw data).....	SM-3
<i>Figure S3.</i> Screen-shots of the interface output	SM-5

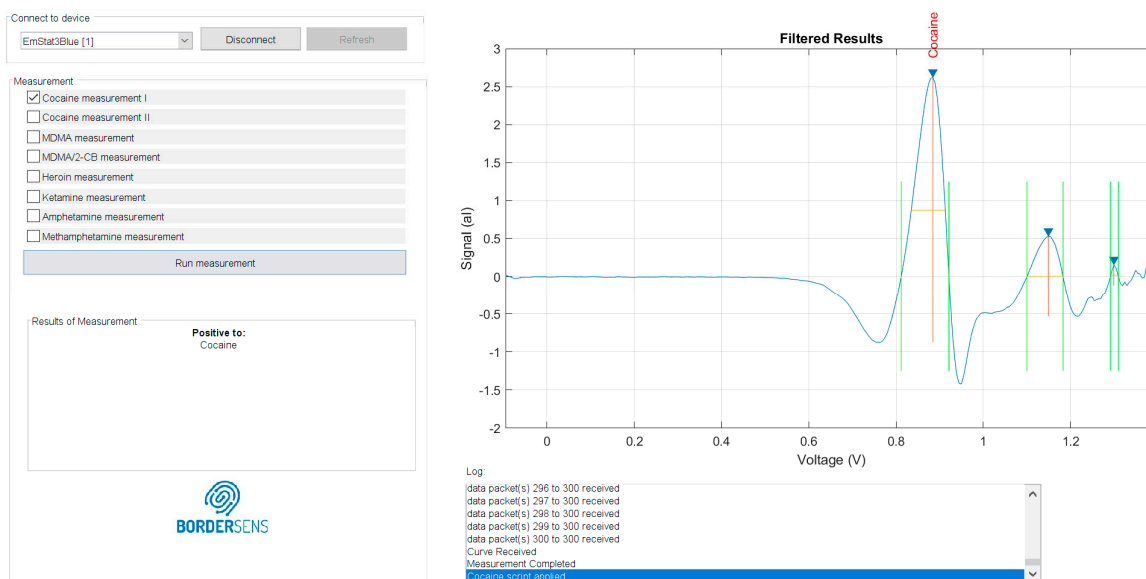


Figure S1. Example of the interface displayed in a laptop showing a positive result for cocaine along with its electrochemical profile.

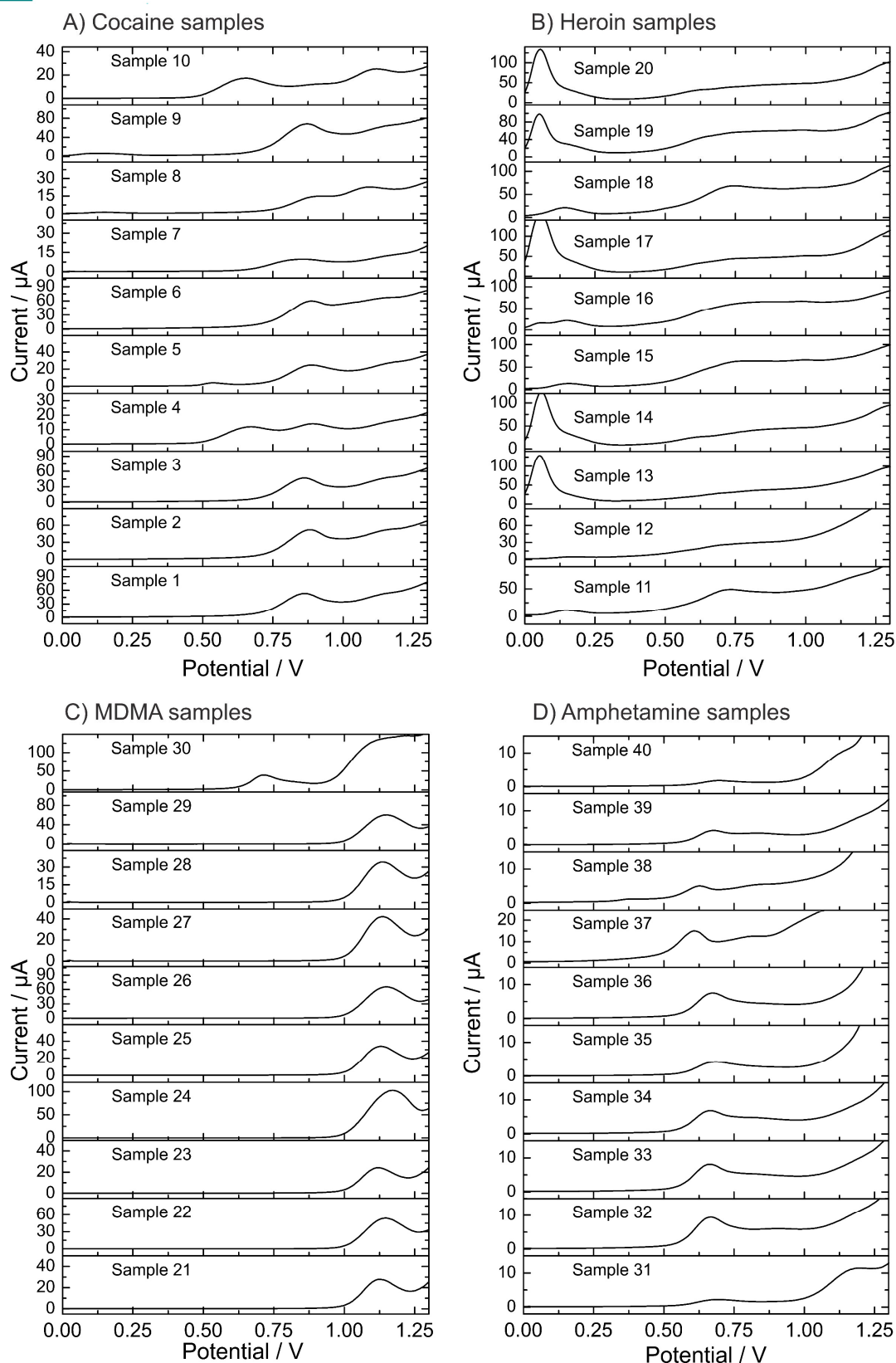


Figure S2. Square-wave voltammograms from the electrochemical analysis of the confiscated samples: A) cocaine samples, B) heroin samples, C) MDMA samples, and D) amphetamine samples.

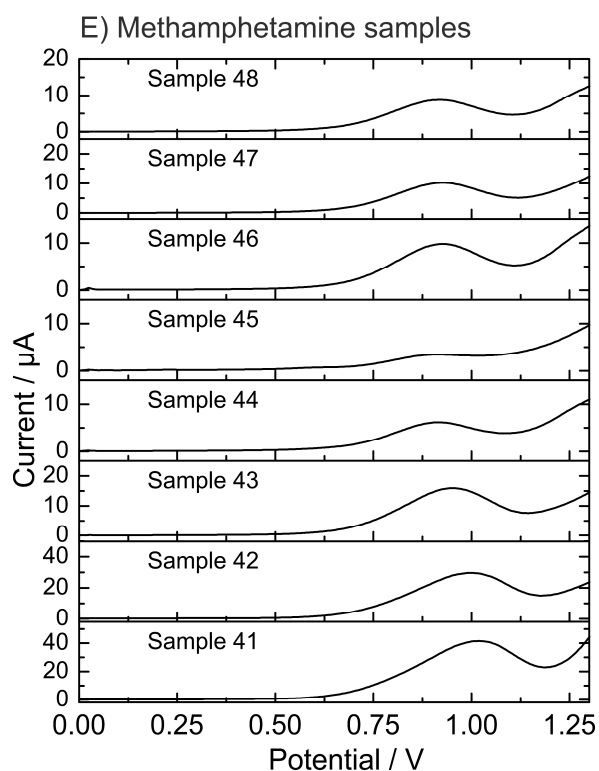
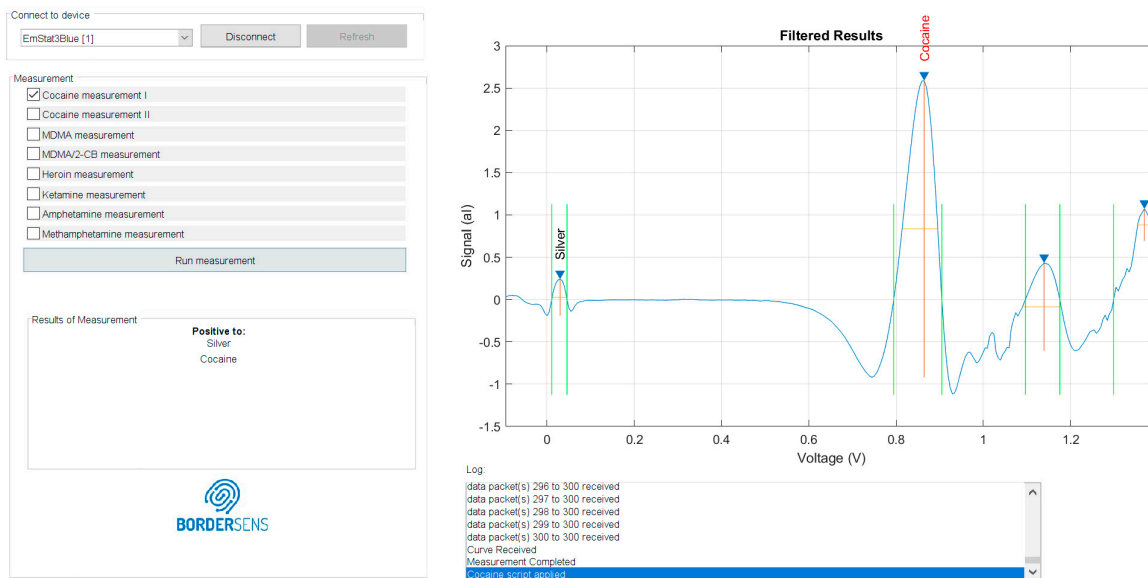


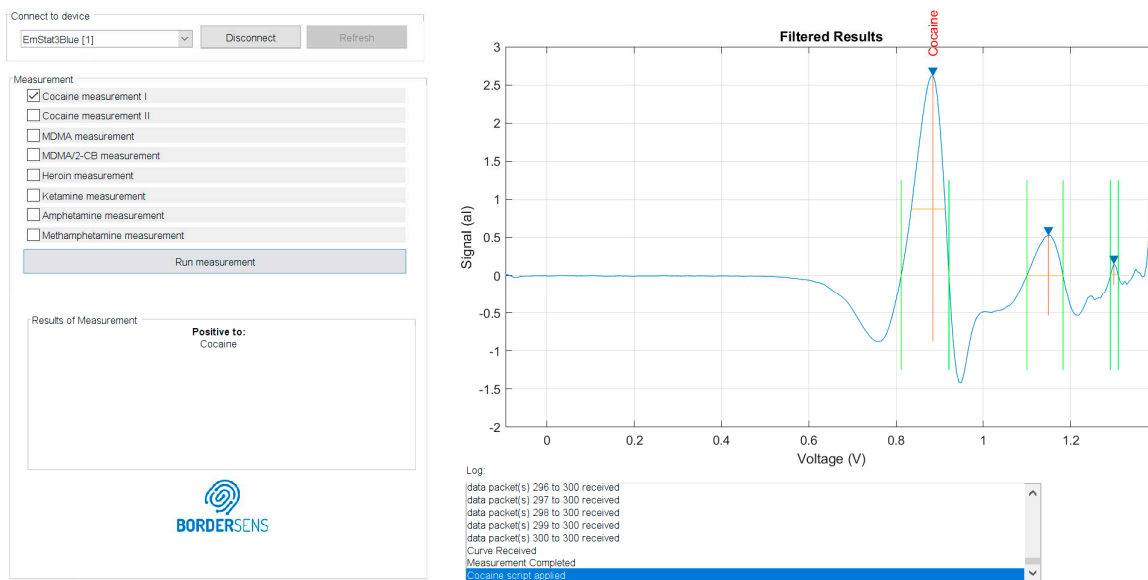
Figure S2 cont. Square-wave voltammograms from the electrochemical analysis of the confiscated samples: E) Methamphetamine samples.

Figure S3. Compilation of the screenshots from the analytical outputs obtained after the electrochemical analysis.

Sample 1



Sample 2



Sample 3

Connect to device
EmStat3Blue [1] Disconnect Refresh


Measurement

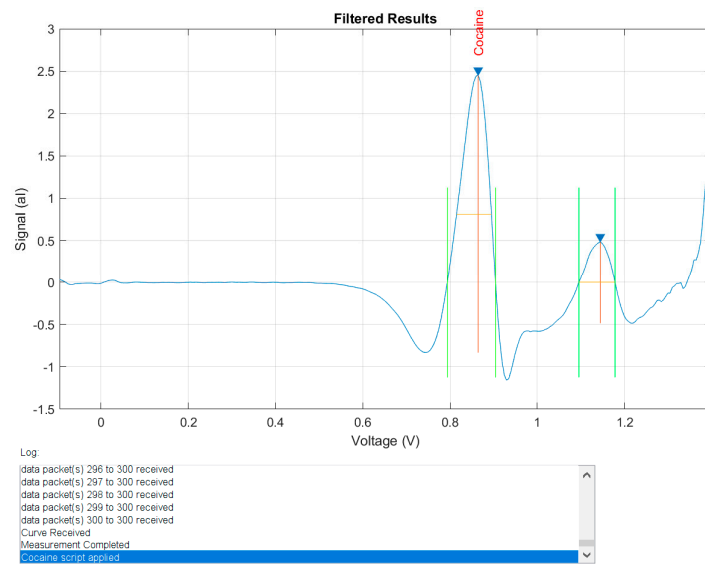
☒ Cocaine measurement I
☐ Cocaine measurement II
☐ MDMA measurement
☐ MDMA/2-CB measurement
☐ Heroin measurement
☐ Ketamine measurement
☐ Amphetamine measurement
☐ Methamphetamine measurement

Run measurement

Results of Measurement

Positive to:
Cocaine





Sample 4

Connect to device
EmStat3Blue [1] Disconnect Refresh


Measurement

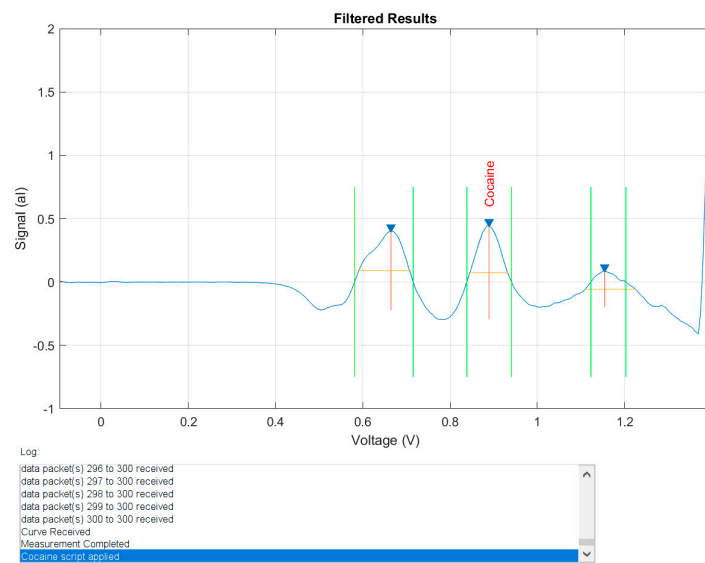
☒ Cocaine measurement I
☐ Cocaine measurement II
☐ MDMA measurement
☐ MDMA/2-CB measurement
☐ Heroin measurement
☐ Ketamine measurement
☐ Amphetamine measurement
☐ Methamphetamine measurement

Run measurement

Results of Measurement

Positive to:
Cocaine





Sample 5

Connect to device
EmStat3Blue [1] Disconnect Refresh


Measurement

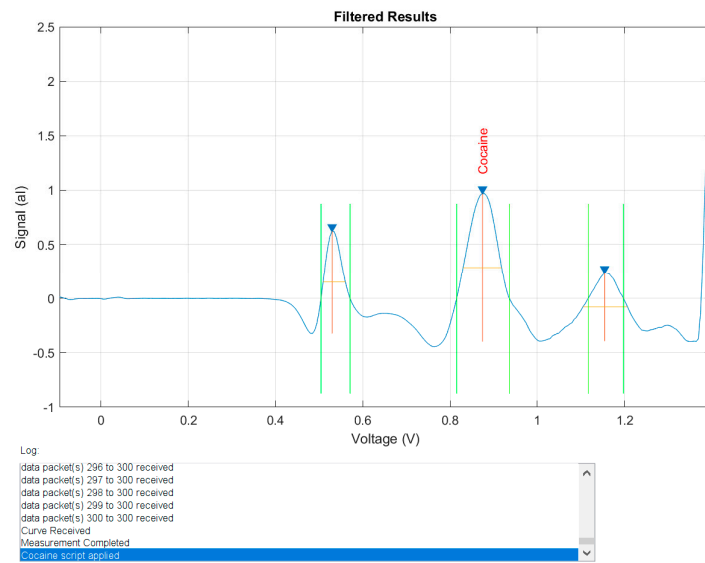
☒ Cocaine measurement I
☐ Cocaine measurement II
☐ MDMA measurement
☐ MDMA/2-CB measurement
☐ Heroin measurement
☐ Ketamine measurement
☐ Amphetamine measurement
☐ Methamphetamine measurement

Run measurement

Results of Measurement

Positive to:
Cocaine





Sample 6

Connect to device
EmStat3Blue [1] Disconnect Refresh


Measurement

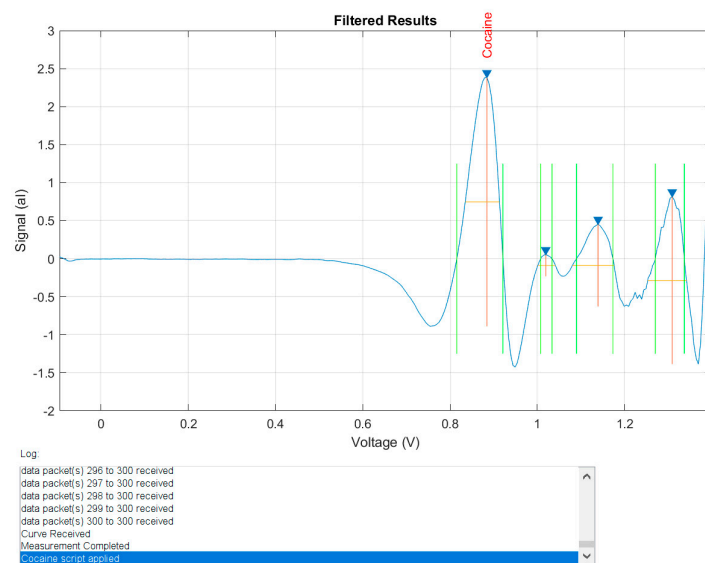
☒ Cocaine measurement I
☐ Cocaine measurement II
☐ MDMA measurement
☐ MDMA/2-CB measurement
☐ Heroin measurement
☐ Ketamine measurement
☐ Amphetamine measurement
☐ Methamphetamine measurement

Run measurement

Results of Measurement

Positive to:
Cocaine





Sample 7

Connect to device
EmStat3Blue [1] Disconnect Refresh


Measurement

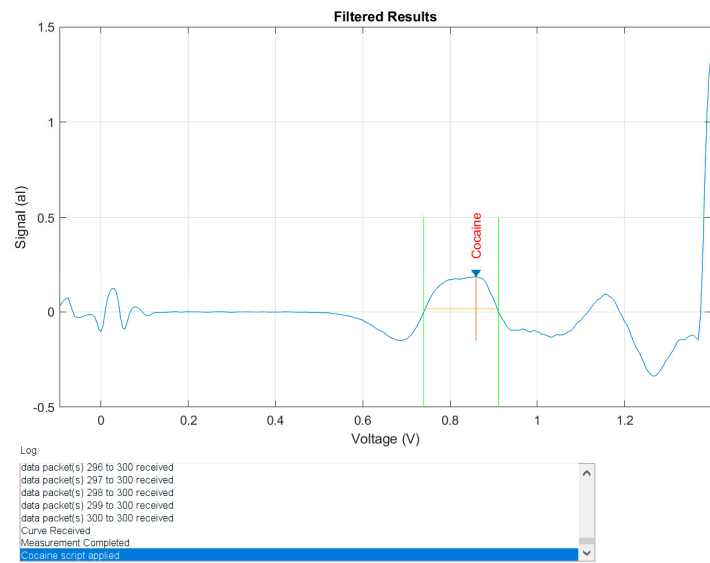
☒ Cocaine measurement I
☐ Cocaine measurement II
☐ MDMA measurement
☐ MDMA/2-CB measurement
☐ Heroin measurement
☐ Ketamine measurement
☐ Amphetamine measurement
☐ Methamphetamine measurement

Run measurement

Results of Measurement

Positive to:
Cocaine





Sample 8

Connect to device
EmStat3Blue [1] Disconnect Refresh


Measurement

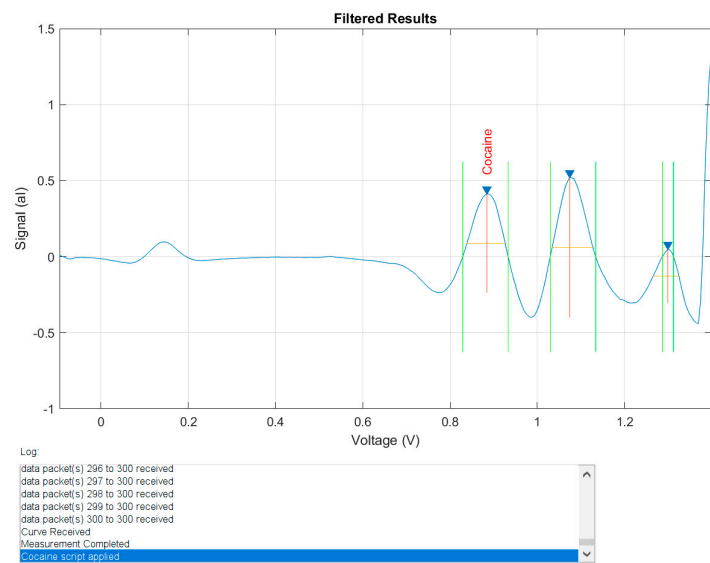
☒ Cocaine measurement I
☐ Cocaine measurement II
☐ MDMA measurement
☐ MDMA/2-CB measurement
☐ Heroin measurement
☐ Ketamine measurement
☐ Amphetamine measurement
☐ Methamphetamine measurement

Run measurement

Results of Measurement

Positive to:
Cocaine





Sample 9

Connect to device
 EmStat3Blue [1] Disconnect Refresh


Measurement

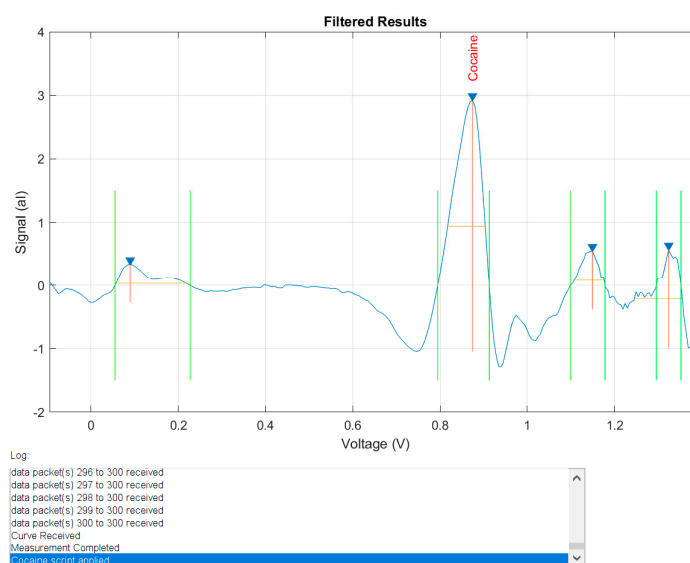
☒ Cocaine measurement I
☐ Cocaine measurement II
☐ MDMA measurement
☐ MDMA/2-CB measurement
☐ Heroin measurement
☐ Ketamine measurement
☐ Amphetamine measurement
☐ Methamphetamine measurement

Run measurement

Results of Measurement

Positive to:
 Cocaine





Sample 10

Connect to device
 EmStat3Blue [1] Disconnect Refresh


Measurement

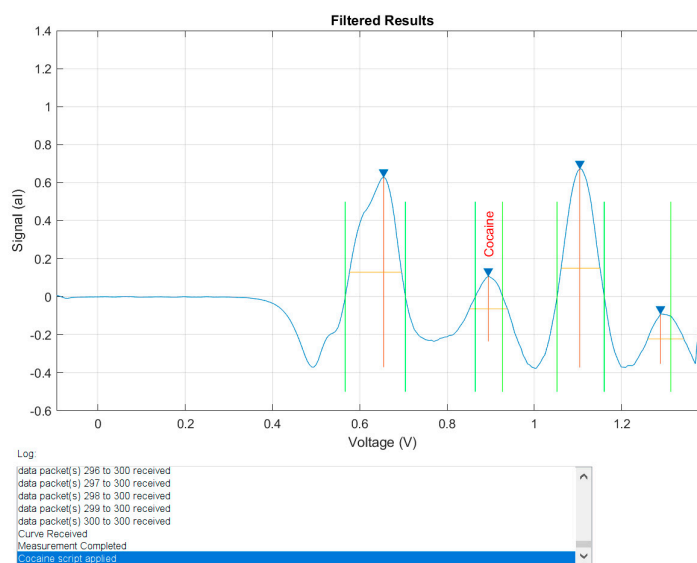
☒ Cocaine measurement I
☐ Cocaine measurement II
☐ MDMA measurement
☐ MDMA/2-CB measurement
☐ Heroin measurement
☐ Ketamine measurement
☐ Amphetamine measurement
☐ Methamphetamine measurement

Run measurement

Results of Measurement

Positive to:
 Cocaine





Sample 11

Connect to device
EmStat3Blue [1] Disconnect Refresh


Measurement

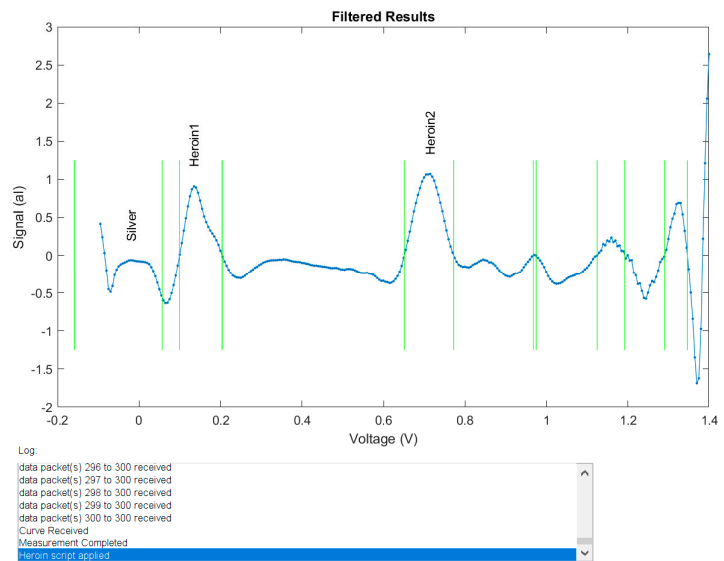
☐ Cocaine measurement I
☐ Cocaine measurement II
☐ MDMA measurement
☐ MDMA/2-CB measurement
☒ Heroin measurement
☐ Ketamine measurement
☐ Amphetamine measurement
☐ Methamphetamine measurement

Run measurement

Results of Measurement

Positive to:
Silver
Heroin1
Heroin2





Sample 12

Connect to device
EmStat3Blue [1] Disconnect Refresh


Measurement

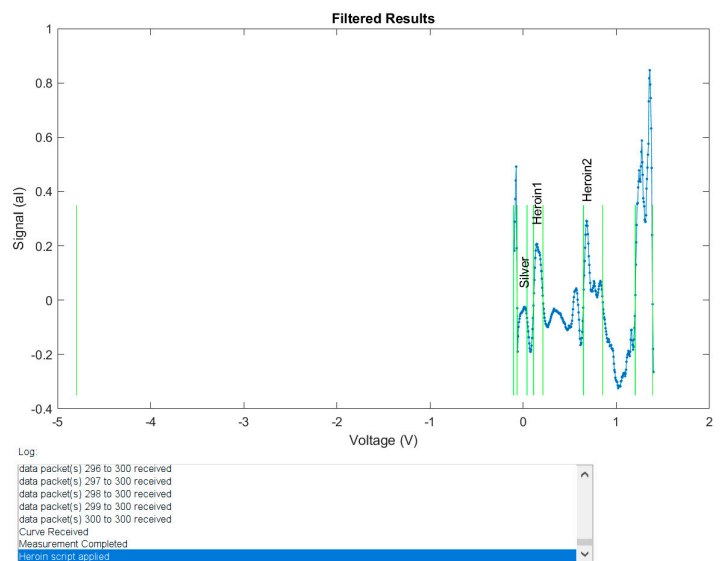
☐ Cocaine measurement I
☐ Cocaine measurement II
☐ MDMA measurement
☐ MDMA/2-CB measurement
☒ Heroin measurement
☐ Ketamine measurement
☐ Amphetamine measurement
☐ Methamphetamine measurement

Run measurement

Results of Measurement

Positive to:
Silver
Heroin1
Heroin2





Sample 13

Connect to device
EmStat3Blue [1] Disconnect Refresh


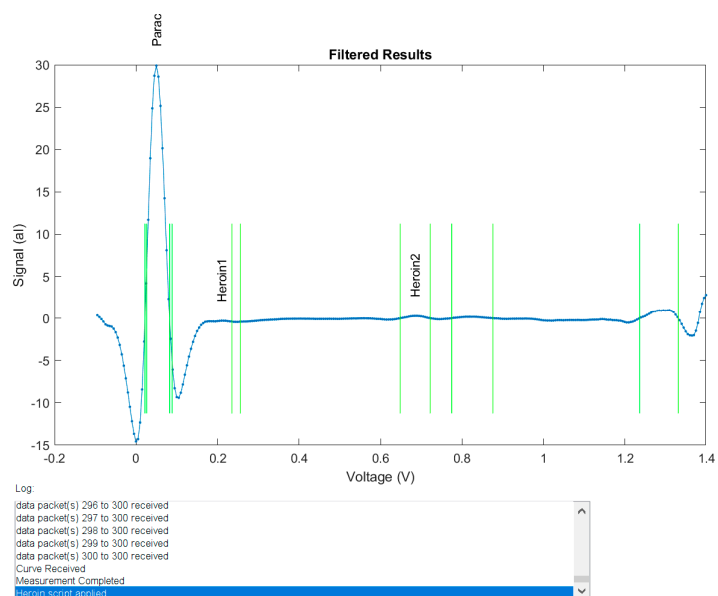
Measurement

- ☐ Cocaine measurement I
- ☐ Cocaine measurement II
- ☐ MDMA measurement
- ☐ MDMA/2-CB measurement
- ☒ Heroin measurement
- ☐ Ketamine measurement
- ☐ Amphetamine measurement
- ☐ Methamphetamine measurement

Run measurement

Results of Measurement

Positive to:
Paracetamol
Heroin1
Heroin2

Sample 14

Connect to device
EmStat3Blue [1] Disconnect Refresh


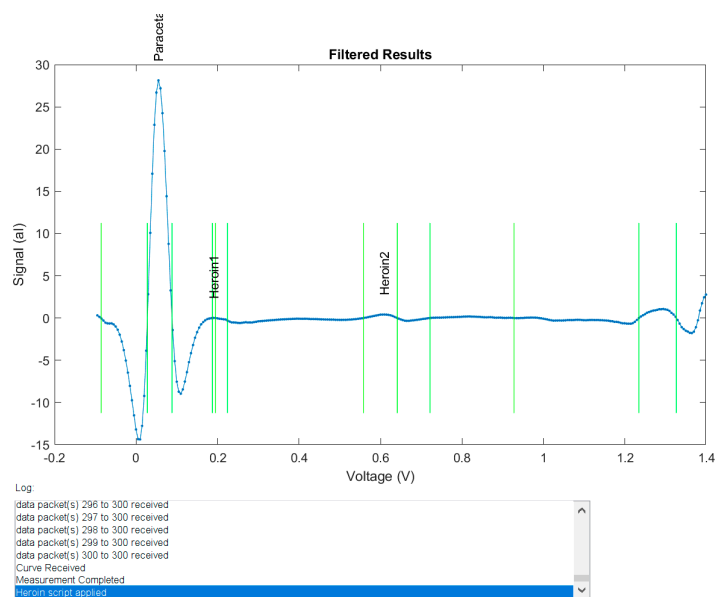
Measurement

- ☐ Cocaine measurement I
- ☐ Cocaine measurement II
- ☐ MDMA measurement
- ☐ MDMA/2-CB measurement
- ☒ Heroin measurement
- ☐ Ketamine measurement
- ☐ Amphetamine measurement
- ☐ Methamphetamine measurement

Run measurement

Results of Measurement

Positive to:
Paracetamol
Heroin1
Heroin2



Sample 15

Connect to device
EmStat3Blue [1] Disconnect Refresh

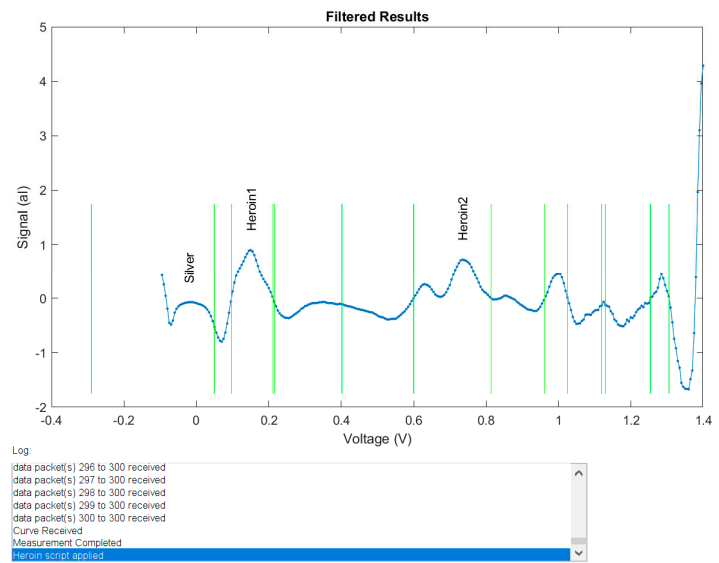
Measurement

- ☐ Cocaine measurement I
- ☐ Cocaine measurement II
- ☐ MDMA measurement
- ☐ MDMA/2-CB measurement
- ☒ Heroin measurement
- ☐ Ketamine measurement
- ☐ Amphetamine measurement
- ☐ Methamphetamine measurement

Run measurement

Results of Measurement

Positive to:
Silver
Heroin1
Heroin2



Sample 16

Connect to device
EmStat3Blue [1] Disconnect Refresh

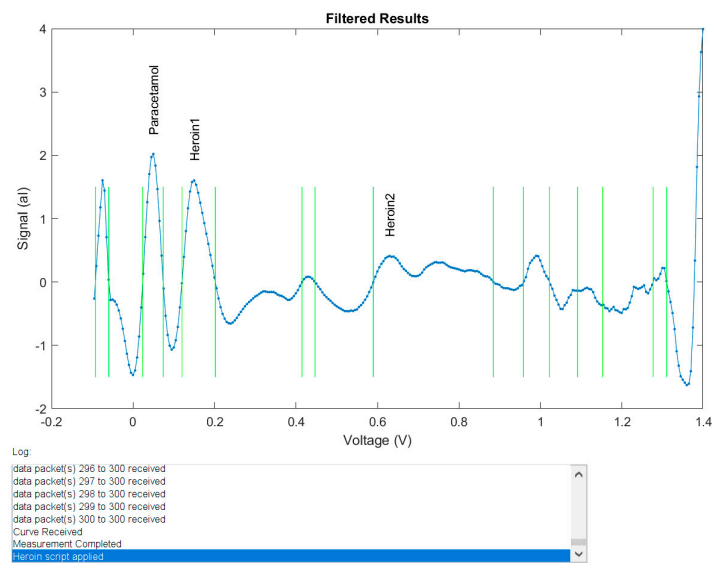
Measurement

- ☐ Cocaine measurement I
- ☐ Cocaine measurement II
- ☐ MDMA measurement
- ☐ MDMA/2-CB measurement
- ☒ Heroin measurement
- ☐ Ketamine measurement
- ☐ Amphetamine measurement
- ☐ Methamphetamine measurement

Run measurement

Results of Measurement

Positive to:
Paracetamol
Heroin1
Heroin2



Sample 17

Connect to device
EmStat3Blue [1] Disconnect Refresh


Measurement

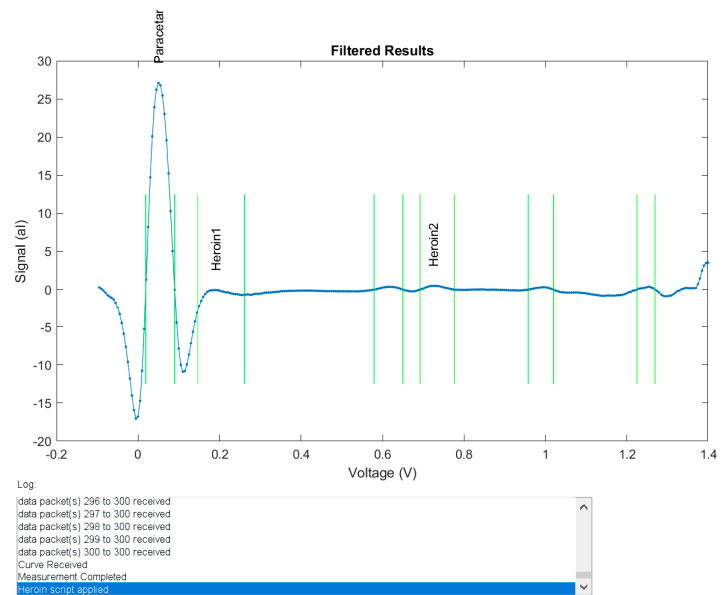
- ☐ Cocaine measurement I
- ☐ Cocaine measurement II
- ☐ MDMA measurement
- ☐ MDMA/2-CB measurement
- ☒ Heroin measurement
- ☐ Ketamine measurement
- ☐ Amphetamine measurement
- ☐ Methamphetamine measurement

Run measurement

Results of Measurement

Positive to:
Paracetamol
Heroin1
Heroin2





Sample 18

Connect to device
EmStat3Blue [1] Disconnect Refresh


Measurement

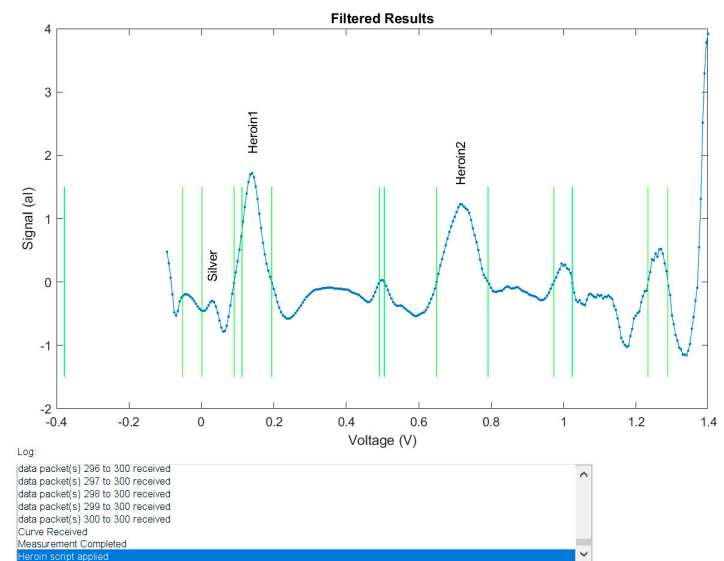
- ☐ Cocaine measurement I
- ☐ Cocaine measurement II
- ☐ MDMA measurement
- ☐ MDMA/2-CB measurement
- ☒ Heroin measurement
- ☐ Ketamine measurement
- ☐ Amphetamine measurement
- ☐ Methamphetamine measurement

Run measurement

Results of Measurement

Positive to:
Silver
Heroin1
Heroin2







Sample 19

Connect to device
EmStat3Blue [1] Disconnect Refresh

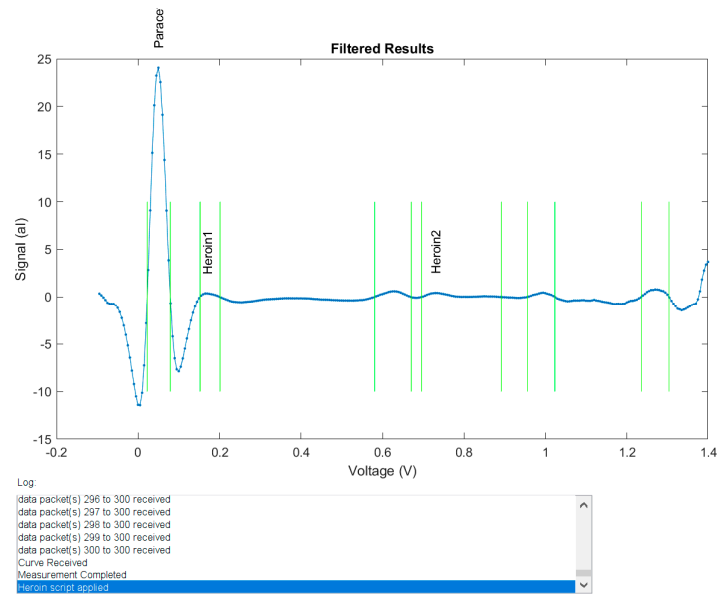
Measurement

- ☐ Cocaine measurement I
- ☐ Cocaine measurement II
- ☐ MDMA measurement
- ☐ MDMA/2-CB measurement
- ☒ Heroin measurement
- ☐ Ketamine measurement
- ☐ Amphetamine measurement
- ☐ Methamphetamine measurement

Run measurement

Results of Measurement

Positive to:
Paracetamol
Heroin1
Heroin2



Sample 20

Connect to device
EmStat3Blue [1] Disconnect Refresh

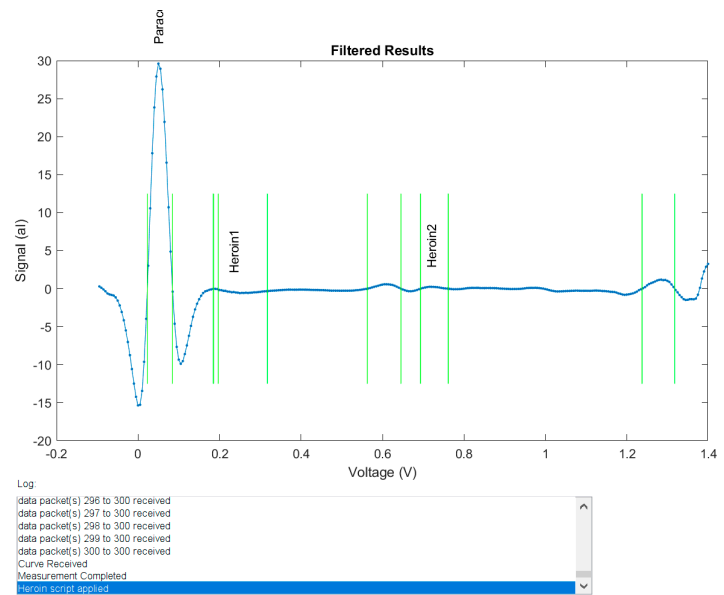
Measurement

- ☐ Cocaine measurement I
- ☐ Cocaine measurement II
- ☐ MDMA measurement
- ☐ MDMA/2-CB measurement
- ☒ Heroin measurement
- ☐ Ketamine measurement
- ☐ Amphetamine measurement
- ☐ Methamphetamine measurement

Run measurement

Results of Measurement

Positive to:
Paracetamol
Heroin1
Heroin2





Sample 21

Connect to device
EmStat3Blue [1] Disconnect Refresh

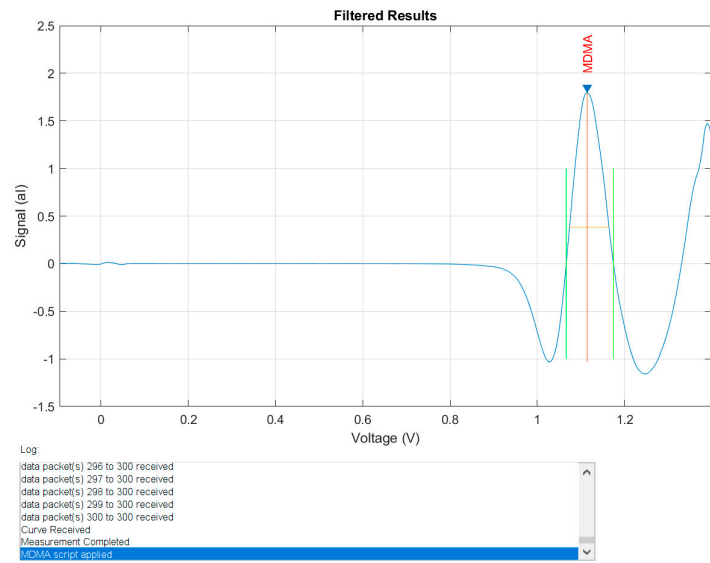
Measurement

- ☐ Cocaine measurement I
- ☐ Cocaine measurement II
- ☒ MDMA measurement
- ☐ MDMA/2-CB measurement
- ☐ Heroin measurement
- ☐ Ketamine measurement
- ☐ Amphetamine measurement
- ☐ Methamphetamine measurement

Run measurement

Results of Measurement

Positive to:
MDMA



Sample 22

Connect to device
EmStat3Blue [1] Disconnect Refresh

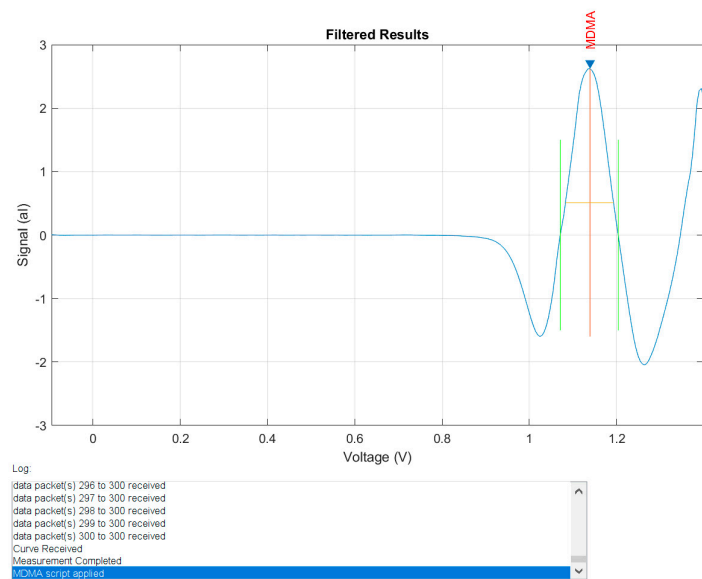
Measurement

- ☐ Cocaine measurement I
- ☐ Cocaine measurement II
- ☒ MDMA measurement
- ☐ MDMA/2-CB measurement
- ☐ Heroin measurement
- ☐ Ketamine measurement
- ☐ Amphetamine measurement
- ☐ Methamphetamine measurement

Run measurement

Results of Measurement

Positive to:
MDMA





Sample 23

Connect to device
EmStat3Blue [1] Disconnect Refresh

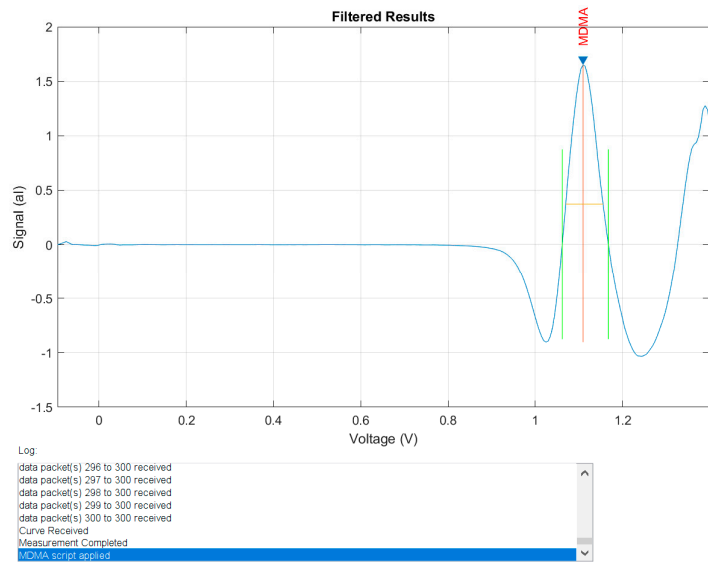
Measurement

- ☐ Cocaine measurement I
- ☐ Cocaine measurement II
- ☒ MDMA measurement
- ☐ MDMA/2-CB measurement
- ☐ Heroin measurement
- ☐ Ketamine measurement
- ☐ Amphetamine measurement
- ☐ Methamphetamine measurement

Run measurement

Results of Measurement

Positive to:
MDMA



Sample 24

Connect to device
EmStat3Blue [1] Disconnect Refresh

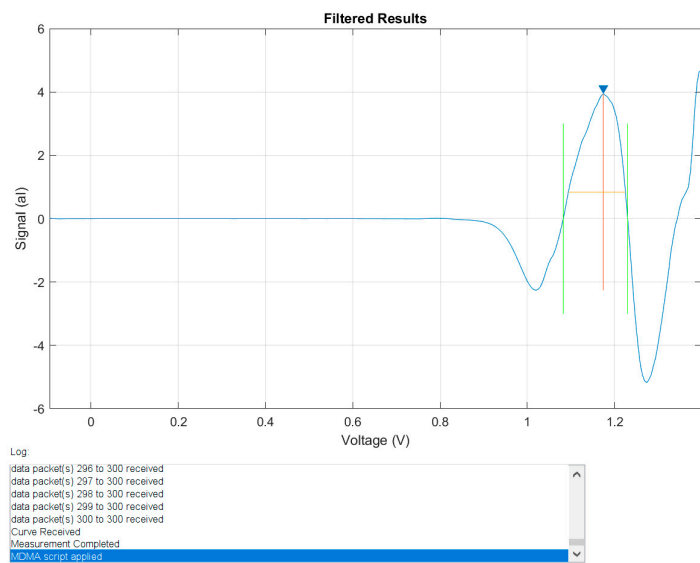
Measurement

- ☐ Cocaine measurement I
- ☐ Cocaine measurement II
- ☒ MDMA measurement
- ☐ MDMA/2-CB measurement
- ☐ Heroin measurement
- ☐ Ketamine measurement
- ☐ Amphetamine measurement
- ☐ Methamphetamine measurement

Run measurement

Results of Measurement

Positive to:



Sample 25

Connect to device
EmStat3Blue [1] Disconnect Refresh


Measurement

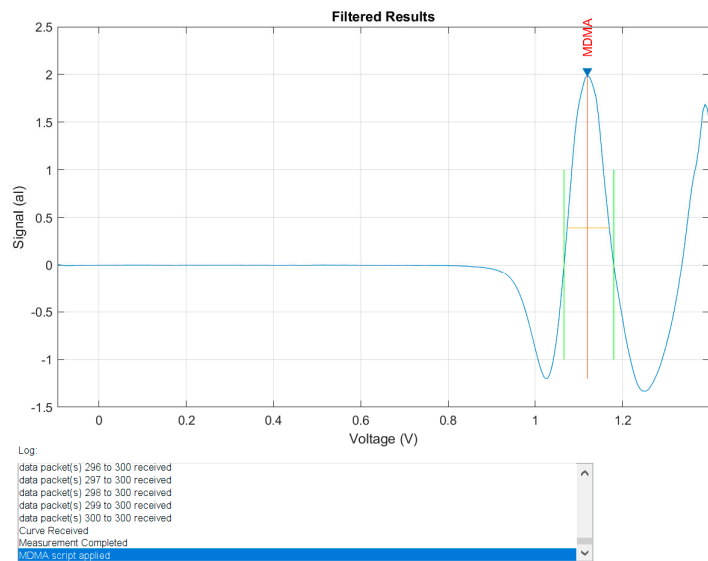
☐ Cocaine measurement I
☐ Cocaine measurement II
☒ MDMA measurement
☐ MDMA/2-CB measurement
☐ Heroin measurement
☐ Ketamine measurement
☐ Amphetamine measurement
☐ Methamphetamine measurement

Run measurement

Results of Measurement

Positive to:
MDMA





Sample 26

Connect to device
EmStat3Blue [1] Disconnect Refresh


Measurement

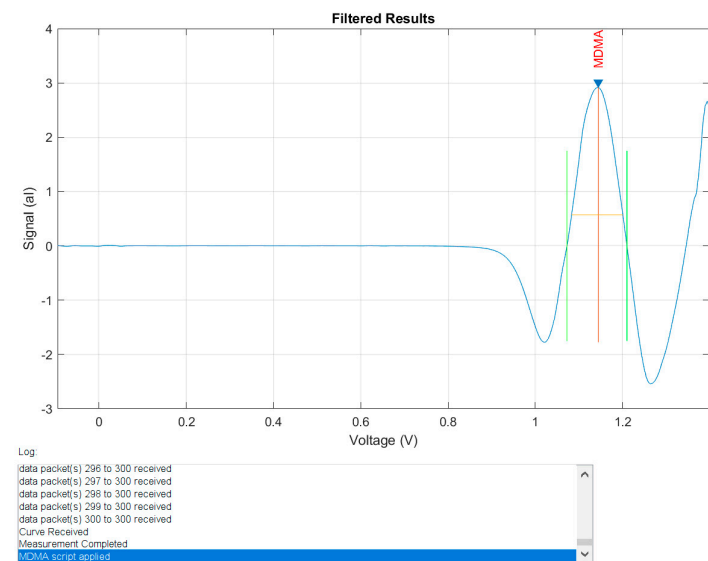
☐ Cocaine measurement I
☐ Cocaine measurement II
☒ MDMA measurement
☐ MDMA/2-CB measurement
☐ Heroin measurement
☐ Ketamine measurement
☐ Amphetamine measurement
☐ Methamphetamine measurement

Run measurement

Results of Measurement

Positive to:
MDMA





Sample 27

Connect to device
EmStat3Blue [1] Disconnect Refresh


Measurement

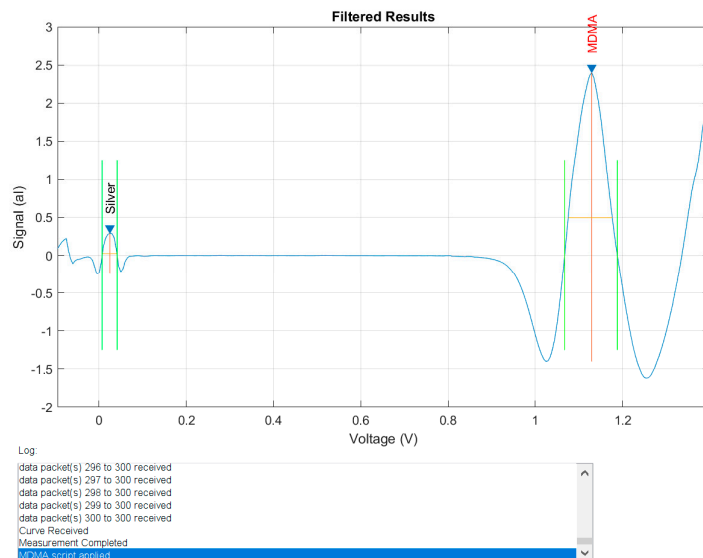
☐ Cocaine measurement I
☐ Cocaine measurement II
☒ MDMA measurement
☐ MDMA/2-CB measurement
☐ Heroin measurement
☐ Ketamine measurement
☐ Amphetamine measurement
☐ Methamphetamine measurement

Run measurement

Results of Measurement

Positive to:
Silver
MDMA





Sample 28

Connect to device
EmStat3Blue [1] Disconnect Refresh


Measurement

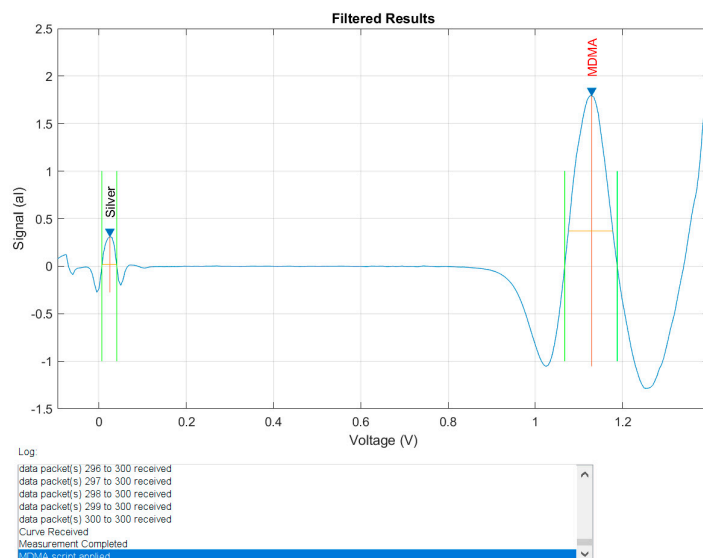
☐ Cocaine measurement I
☐ Cocaine measurement II
☒ MDMA measurement
☐ MDMA/2-CB measurement
☐ Heroin measurement
☐ Ketamine measurement
☐ Amphetamine measurement
☐ Methamphetamine measurement

Run measurement

Results of Measurement

Positive to:
Silver
MDMA







Sample 29

Connect to device
EmStat3Blue [1] Disconnect Refresh

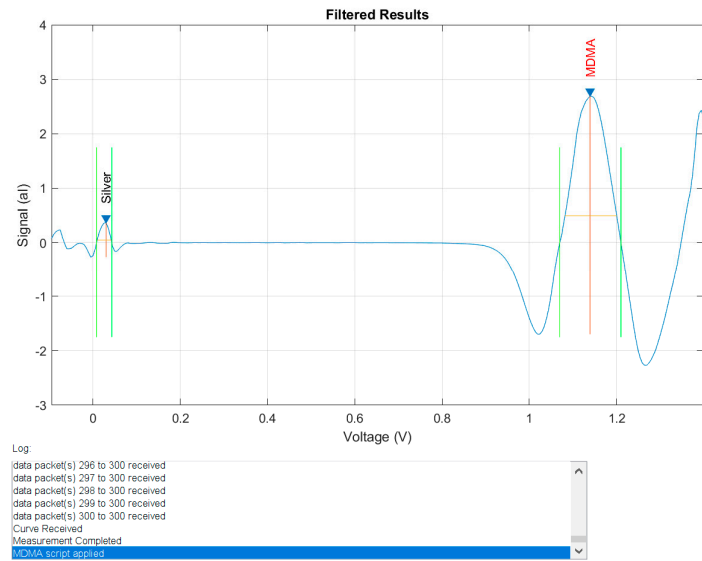
Measurement

- ☐ Cocaine measurement I
- ☐ Cocaine measurement II
- ☒ MDMA measurement
- ☐ MDMA/2-CB measurement
- ☐ Heroin measurement
- ☐ Ketamine measurement
- ☐ Amphetamine measurement
- ☐ Methamphetamine measurement

Run measurement

Results of Measurement

Positive to:
Silver
MDMA



Sample 30

Connect to device
EmStat3Blue [1] Disconnect Refresh

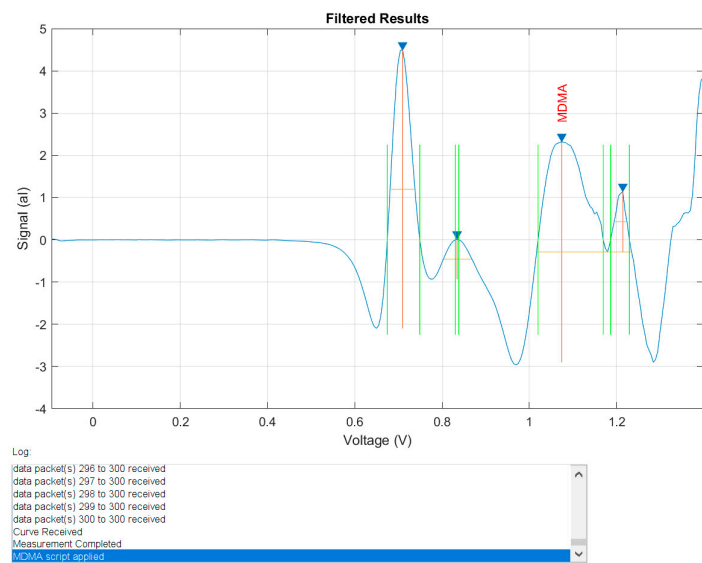
Measurement

- ☐ Cocaine measurement I
- ☐ Cocaine measurement II
- ☒ MDMA measurement
- ☐ MDMA/2-CB measurement
- ☐ Heroin measurement
- ☐ Ketamine measurement
- ☐ Amphetamine measurement
- ☐ Methamphetamine measurement

Run measurement

Results of Measurement

Positive to:
MDMA





Sample 31

Connect to device
EmStat3Blue [1] Disconnect Refresh

Measurement

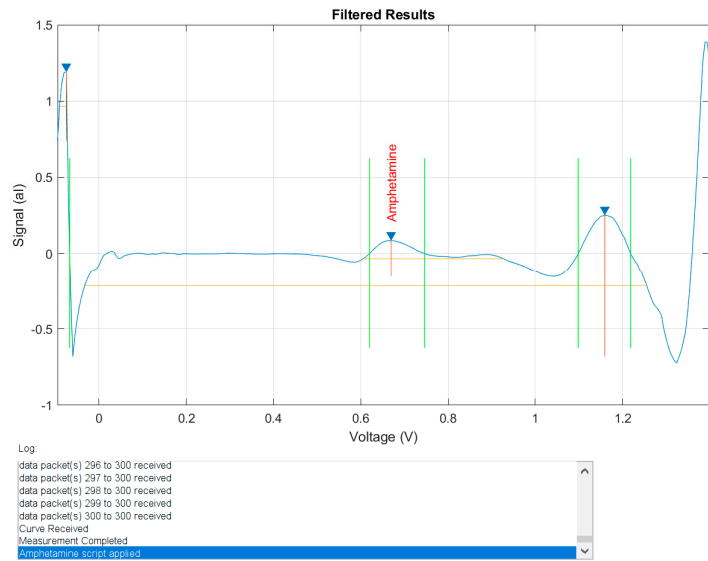
- ☐ Cocaine measurement I
- ☐ Cocaine measurement II
- ☐ MDMA measurement
- ☐ MDMA/2-CB measurement
- ☐ Heroin measurement
- ☐ Ketamine measurement
- ☒ Amphetamine measurement
- ☐ Methamphetamine measurement

Run measurement

Results of Measurement

Positive to:

Amphetamine



Sample 32

Connect to device
EmStat3Blue [1] Disconnect Refresh

Measurement

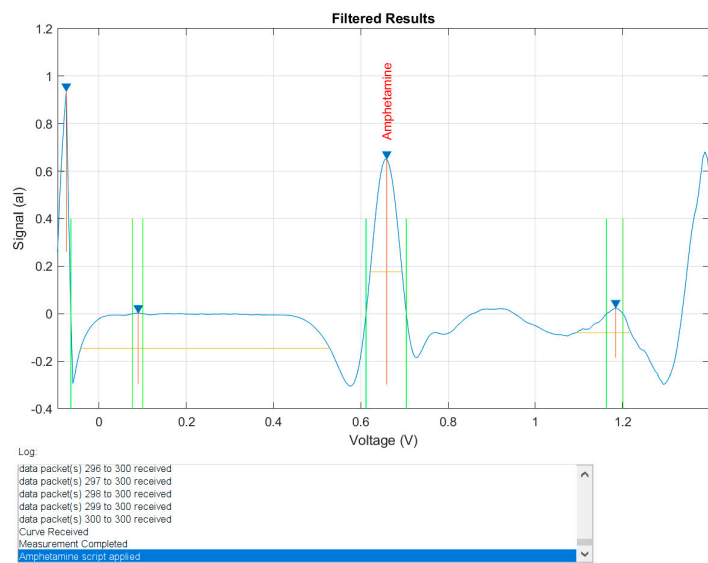
- ☐ Cocaine measurement I
- ☐ Cocaine measurement II
- ☐ MDMA measurement
- ☐ MDMA/2-CB measurement
- ☐ Heroin measurement
- ☐ Ketamine measurement
- ☒ Amphetamine measurement
- ☐ Methamphetamine measurement

Run measurement

Results of Measurement

Positive to:

Amphetamine



Sample 33

Connect to device
EmStat3Blue [1] Disconnect Refresh

Measurement


☐ Cocaine measurement I
☐ Cocaine measurement II
☐ MDMA measurement
☐ MDMA/2-CB measurement
☐ Heroin measurement
☐ Ketamine measurement
☒ Amphetamine measurement
☐ Methamphetamine measurement

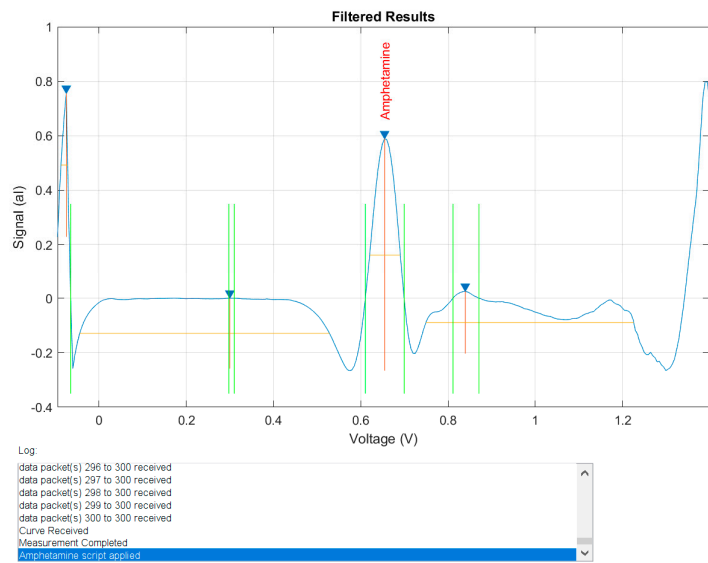
Run measurement

Results of Measurement

Positive to:

Amphetamine





Sample 34

Connect to device
EmStat3Blue [1] Disconnect Refresh

Measurement


☐ Cocaine measurement I
☐ Cocaine measurement II
☐ MDMA measurement
☐ MDMA/2-CB measurement
☐ Heroin measurement
☐ Ketamine measurement
☒ Amphetamine measurement
☐ Methamphetamine measurement

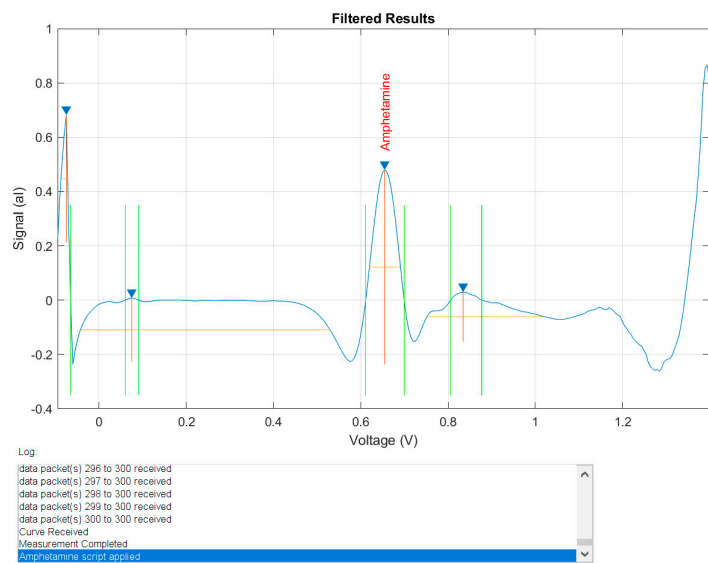
Run measurement

Results of Measurement

Positive to:

Amphetamine





Sample 35

Connect to device
EmStat3Blue [1] Disconnect Refresh


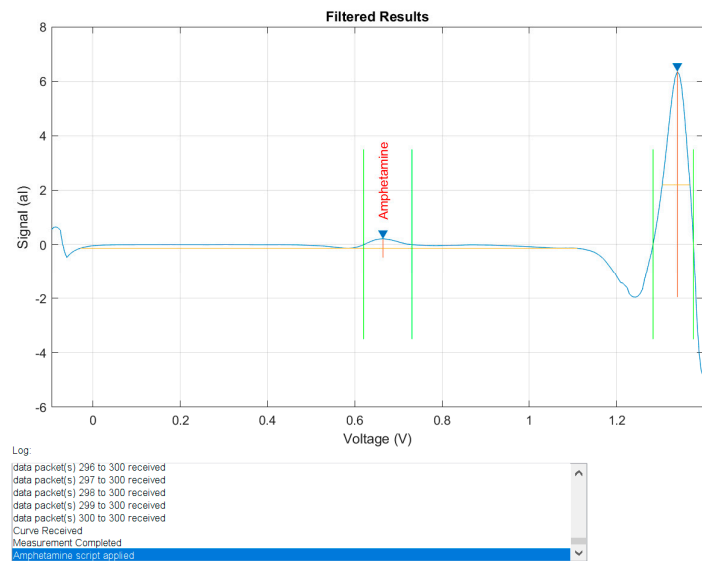
Measurement

☐ Cocaine measurement I
☐ Cocaine measurement II
☐ MDMA measurement
☐ MDMA/2-CB measurement
☐ Heroin measurement
☐ Ketamine measurement
☒ Amphetamine measurement
☐ Methamphetamine measurement

Run measurement

Results of Measurement

Positive to:
Amphetamine

Sample 36

Connect to device
EmStat3Blue [1] Disconnect Refresh


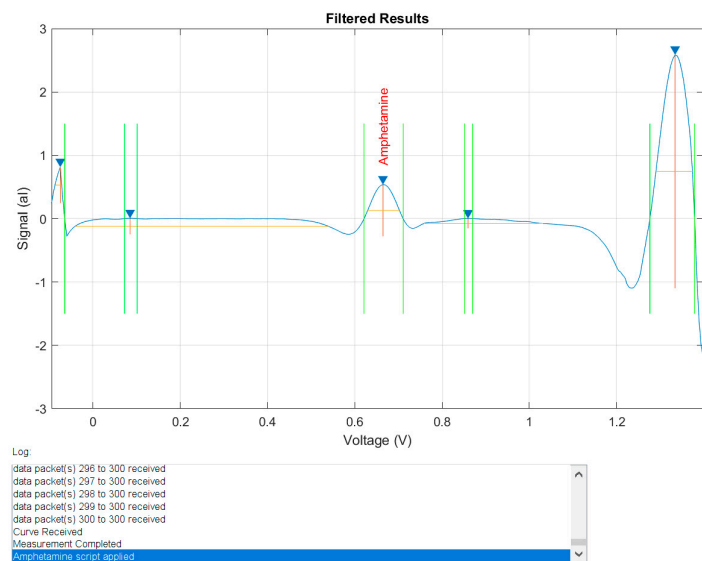
Measurement

☐ Cocaine measurement I
☐ Cocaine measurement II
☐ MDMA measurement
☐ MDMA/2-CB measurement
☐ Heroin measurement
☐ Ketamine measurement
☒ Amphetamine measurement
☐ Methamphetamine measurement

Run measurement

Results of Measurement

Positive to:
Amphetamine

Sample 37

Connect to device
EmStat3Blue [1] Disconnect Refresh


Measurement

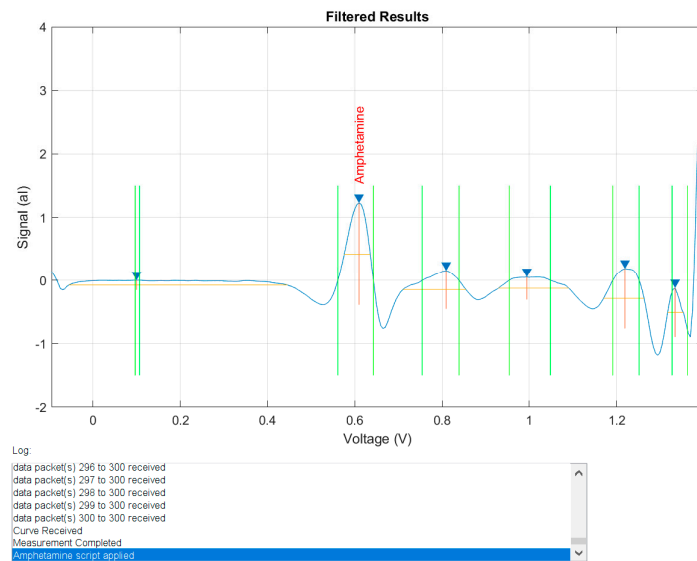
☐ Cocaine measurement I
☐ Cocaine measurement II
☐ MDMA measurement
☐ MDMA/2-CB measurement
☐ Heroin measurement
☐ Ketamine measurement
☒ Amphetamine measurement
☐ Methamphetamine measurement

Run measurement

Results of Measurement

Positive to:
Amphetamine





Sample 38

Connect to device
EmStat3Blue [1] Disconnect Refresh


Measurement

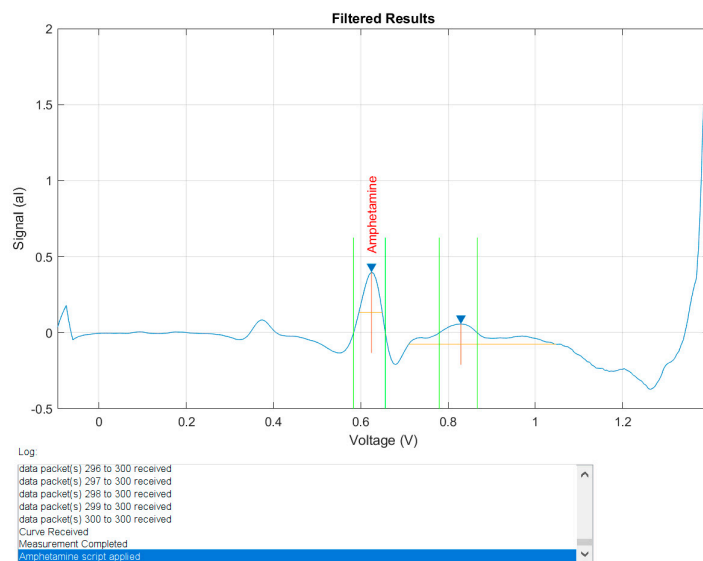
☐ Cocaine measurement I
☐ Cocaine measurement II
☐ MDMA measurement
☐ MDMA/2-CB measurement
☐ Heroin measurement
☐ Ketamine measurement
☒ Amphetamine measurement
☐ Methamphetamine measurement

Run measurement

Results of Measurement

Positive to:
Amphetamine







Sample 39

Connect to device
EmStat3Blue [1] Disconnect Refresh

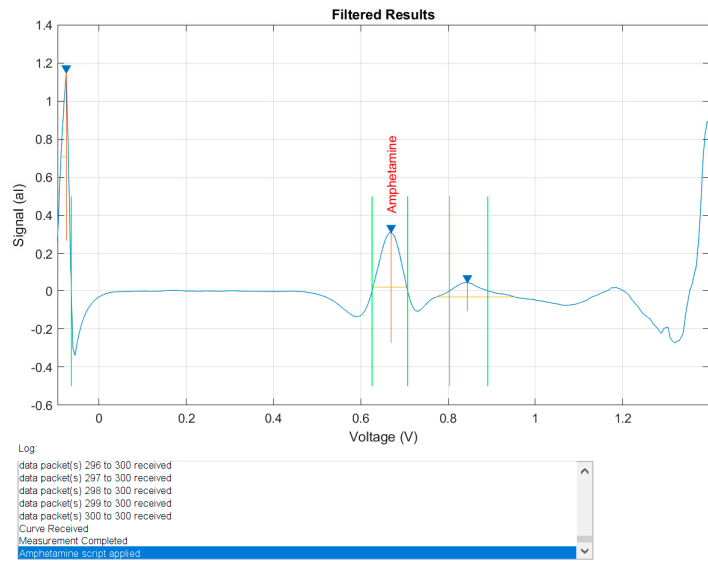
Measurement

- ☐ Cocaine measurement I
- ☐ Cocaine measurement II
- ☐ MDMA measurement
- ☐ MDMA/2-CB measurement
- ☐ Heroin measurement
- ☐ Ketamine measurement
- ☒ Amphetamine measurement
- ☐ Methamphetamine measurement

Run measurement

Results of Measurement

Positive to:
Amphetamine



Sample 40

Connect to device
EmStat3Blue [1] Disconnect Refresh

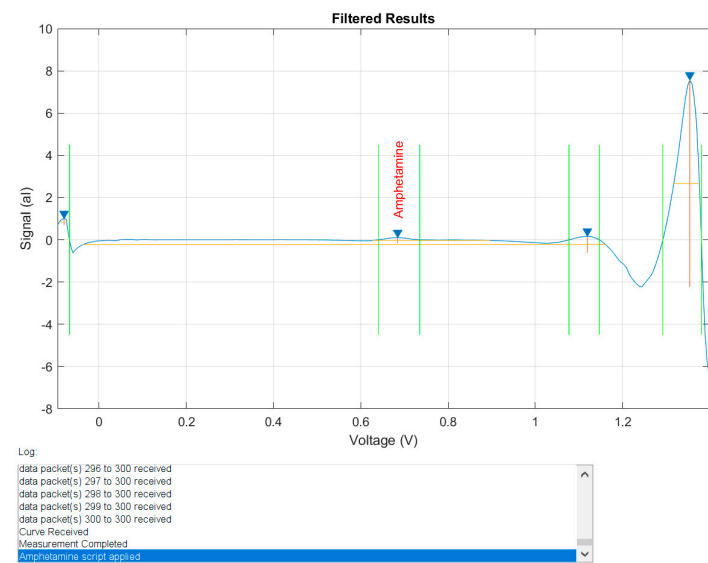
Measurement

- ☐ Cocaine measurement I
- ☐ Cocaine measurement II
- ☐ MDMA measurement
- ☐ MDMA/2-CB measurement
- ☐ Heroin measurement
- ☐ Ketamine measurement
- ☒ Amphetamine measurement
- ☐ Methamphetamine measurement

Run measurement

Results of Measurement

Positive to:
Amphetamine



Sample 41

Connect to device
EmStat3Blue [1] Disconnect Refresh


Measurement

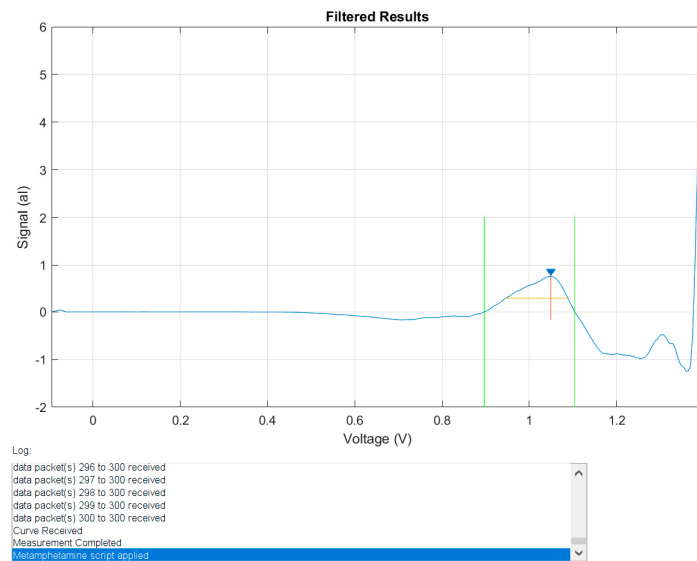
☐ Cocaine measurement I
☐ Cocaine measurement II
☐ MDMA measurement
☐ MDMA/2-CB measurement
☐ Heroin measurement
☐ Ketamine measurement
☐ Amphetamine measurement
☒ Methamphetamine measurement

Run measurement

Results of Measurement

Positive to:





Sample 42

Connect to device
EmStat3Blue [1] Disconnect Refresh


Measurement

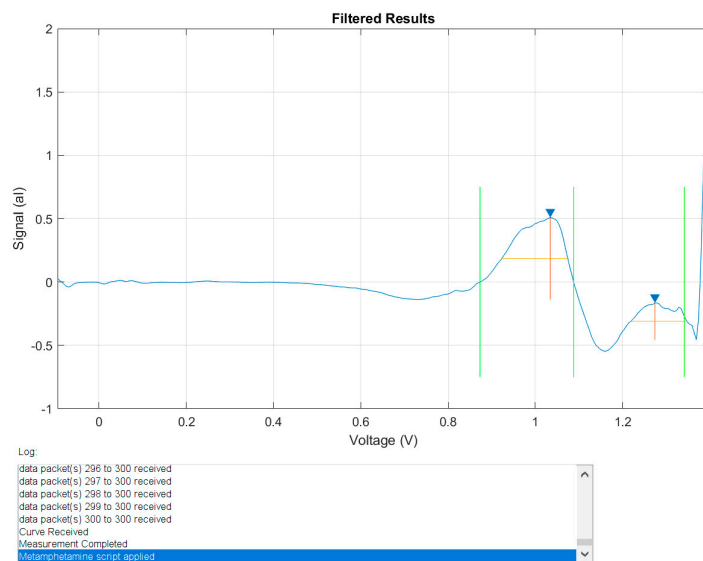
☐ Cocaine measurement I
☐ Cocaine measurement II
☐ MDMA measurement
☐ MDMA/2-CB measurement
☐ Heroin measurement
☐ Ketamine measurement
☐ Amphetamine measurement
☒ Methamphetamine measurement

Run measurement

Results of Measurement

Positive to:





Sample 43

Connect to device
EmStat3Blue [1] Disconnect Refresh

Measurement

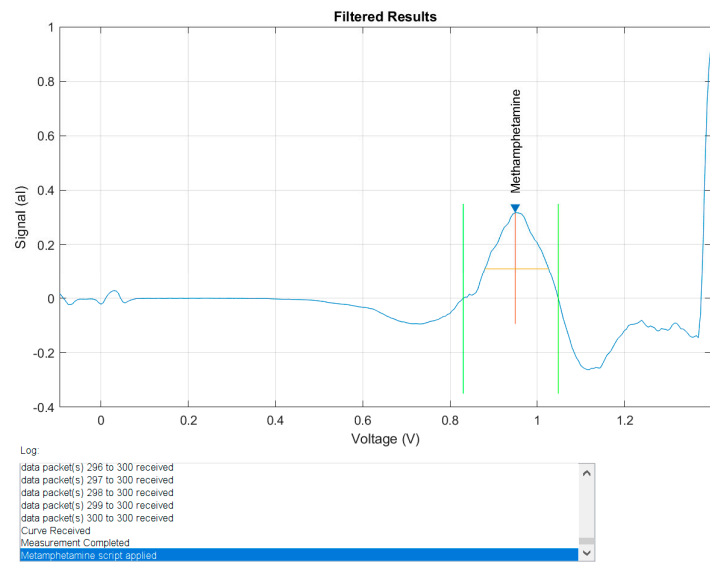
☐ Cocaine measurement I
☐ Cocaine measurement II
☐ MDMA measurement
☐ MDMA/2-CB measurement
☐ Heroin measurement
☐ Ketamine measurement
☐ Amphetamine measurement
☒ Methamphetamine measurement

Run measurement

Results of Measurement

Positive to:
Methamphetamine





Sample 44

Connect to device
EmStat3Blue [1] Disconnect Refresh


Measurement

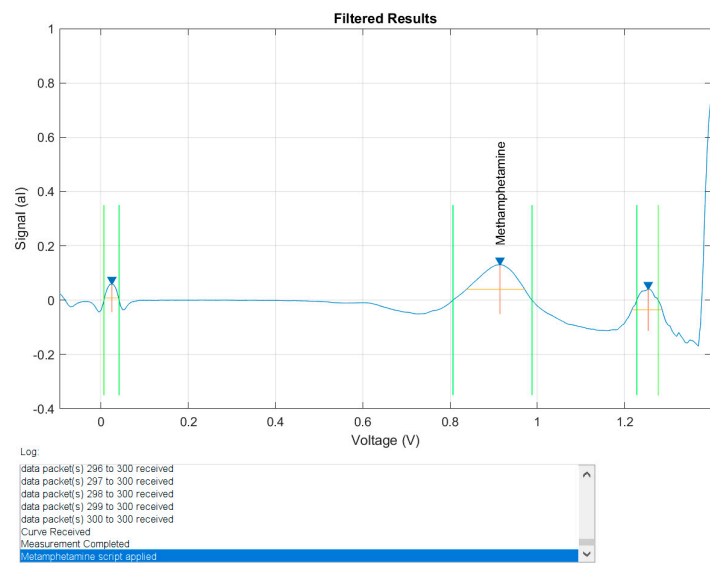
☐ Cocaine measurement I
☐ Cocaine measurement II
☐ MDMA measurement
☐ MDMA/2-CB measurement
☐ Heroin measurement
☐ Ketamine measurement
☐ Amphetamine measurement
☒ Methamphetamine measurement

Run measurement

Results of Measurement

Positive to:
Methamphetamine







Sample 45

Connect to device
EmStat3Blue [1] Disconnect Refresh

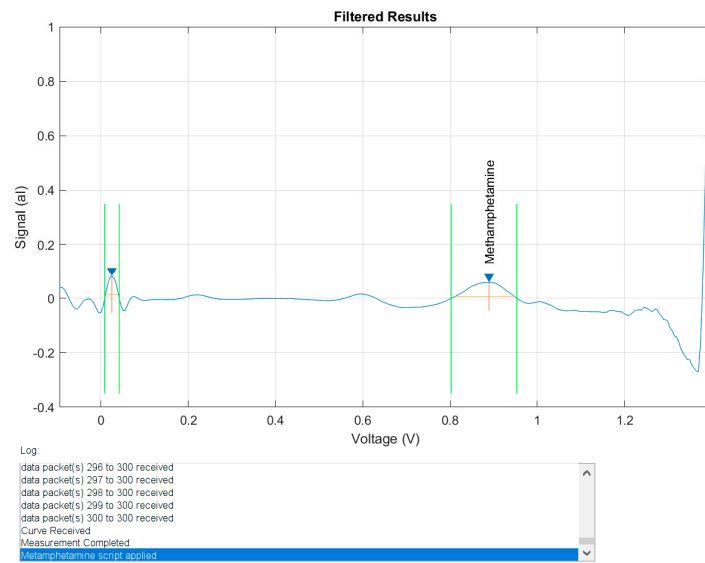
Measurement

- ☐ Cocaine measurement I
- ☐ Cocaine measurement II
- ☐ MDMA measurement
- ☐ MDMA/2-CB measurement
- ☐ Heroin measurement
- ☐ Ketamine measurement
- ☐ Amphetamine measurement
- ☒ Methamphetamine measurement

Run measurement

Results of Measurement

Positive to:
Methamphetamine



Sample 46

Connect to device
EmStat3Blue [1] Disconnect Refresh

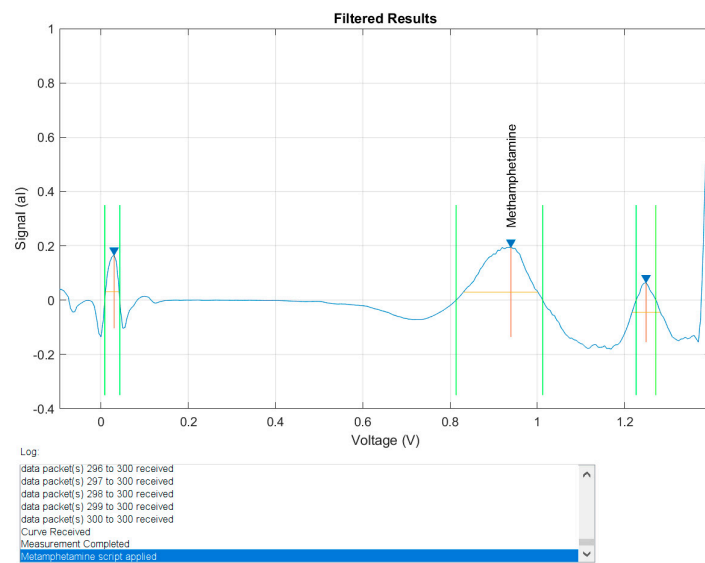
Measurement

- ☐ Cocaine measurement I
- ☐ Cocaine measurement II
- ☐ MDMA measurement
- ☐ MDMA/2-CB measurement
- ☐ Heroin measurement
- ☐ Ketamine measurement
- ☐ Amphetamine measurement
- ☒ Methamphetamine measurement

Run measurement

Results of Measurement

Positive to:
Methamphetamine





Sample 47

Connect to device
EmStat3Blue [1] Disconnect Refresh

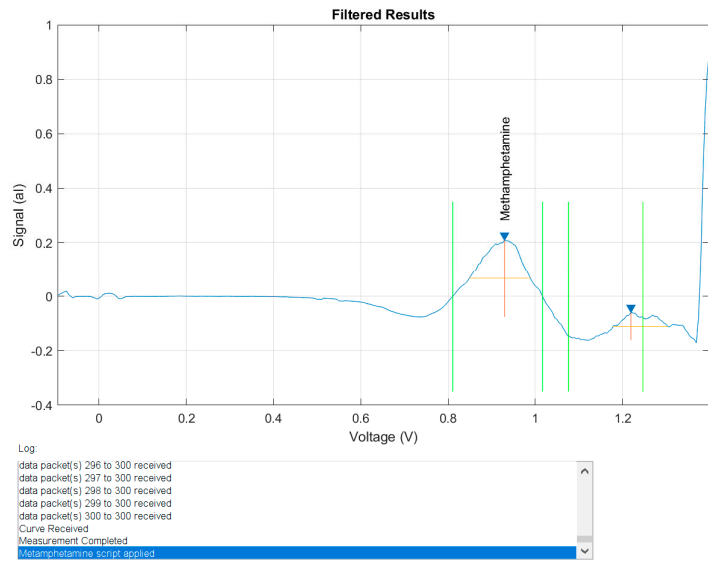
Measurement

- ☐ Cocaine measurement I
- ☐ Cocaine measurement II
- ☐ MDMA measurement
- ☐ MDMA/2-CB measurement
- ☐ Heroin measurement
- ☐ Ketamine measurement
- ☐ Amphetamine measurement
- ☒ Methamphetamine measurement

Run measurement

Results of Measurement

Positive to:
Methamphetamine



Sample 48

Connect to device
EmStat3Blue [1] Disconnect Refresh

Measurement

- ☐ Cocaine measurement I
- ☐ Cocaine measurement II
- ☐ MDMA measurement
- ☐ MDMA/2-CB measurement
- ☐ Heroin measurement
- ☐ Ketamine measurement
- ☐ Amphetamine measurement
- ☒ Methamphetamine measurement

Run measurement

Results of Measurement

Positive to:
Methamphetamine

