

In-Silico Epitope-Based Vaccine Prediction against Fungal Infection Aspergillosis

Anamika Basu

Department of Biochemistry, Gurudas College, Kolkata, India.basuanamikaami@gmail.com

Supplementary file S1

1. Transmembrane region and secretory peptide or signal peptide region are predicted by using MEMSAT8SV : Transmembrane helix prediction method, shown in Figure S1.

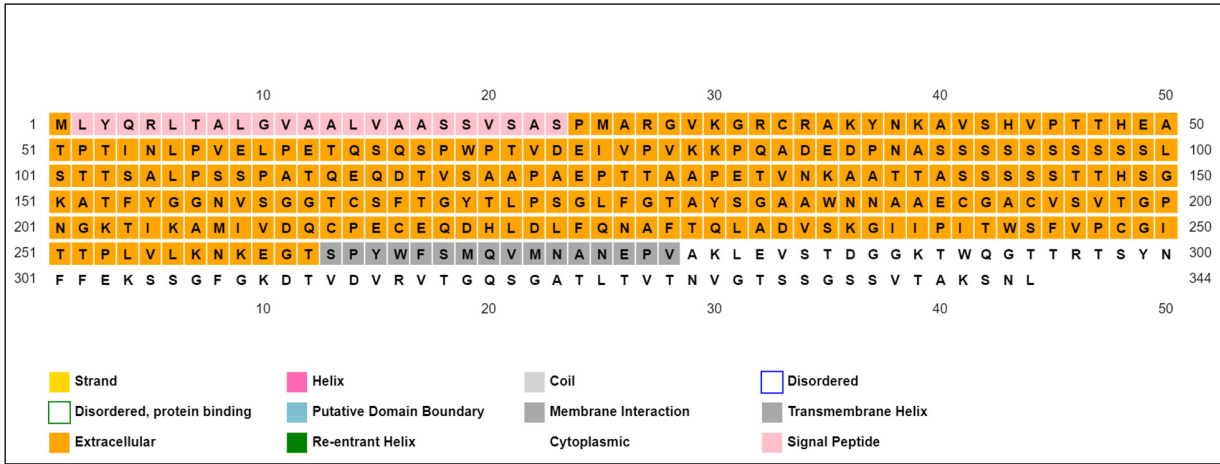


Figure S1. Prediction of transmembrane region and signal peptide region

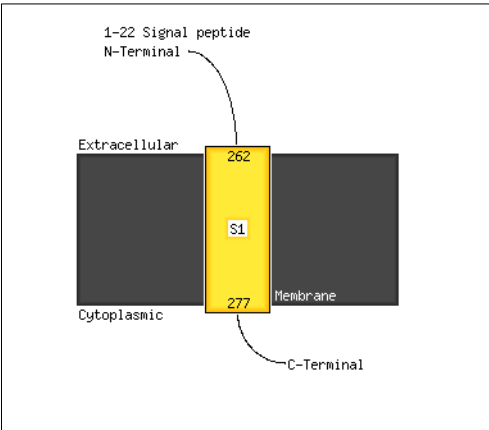


Figure S2. Schematic diagram for antigenic protein considering transmembrane region and signal peptide region

2. The high-resolution Ramachandran plot from RAMPAGE and PROCHECK web servers are shown in Figure S3 and S4

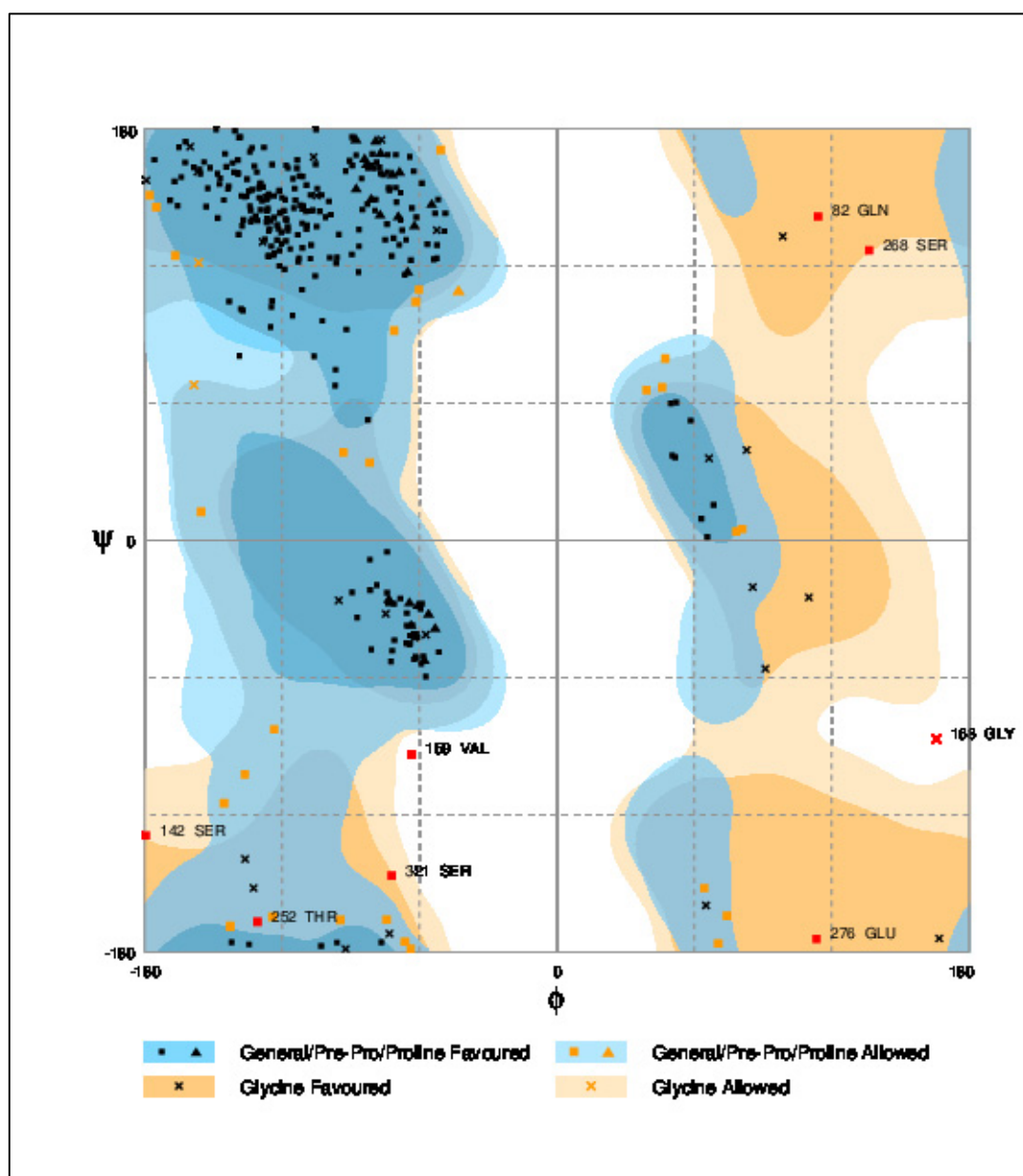


Figure S3. The high-resolution Ramachandran plot from RAMPAGE

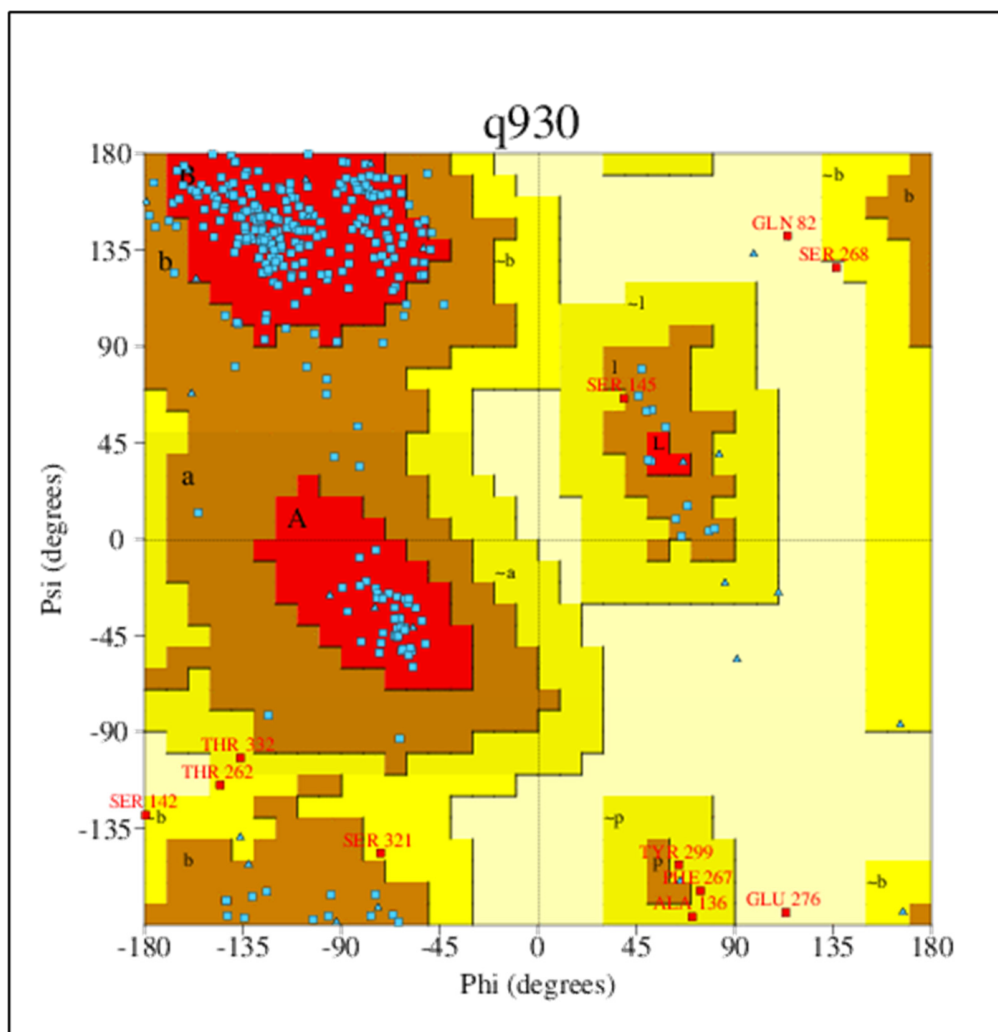


Figure S4. The high-resolution Ramachandran plot from PROCHECK

3. The plot for 3D/1D vs average score for both model 1 and model 2 are shown in Figure S5 and S6

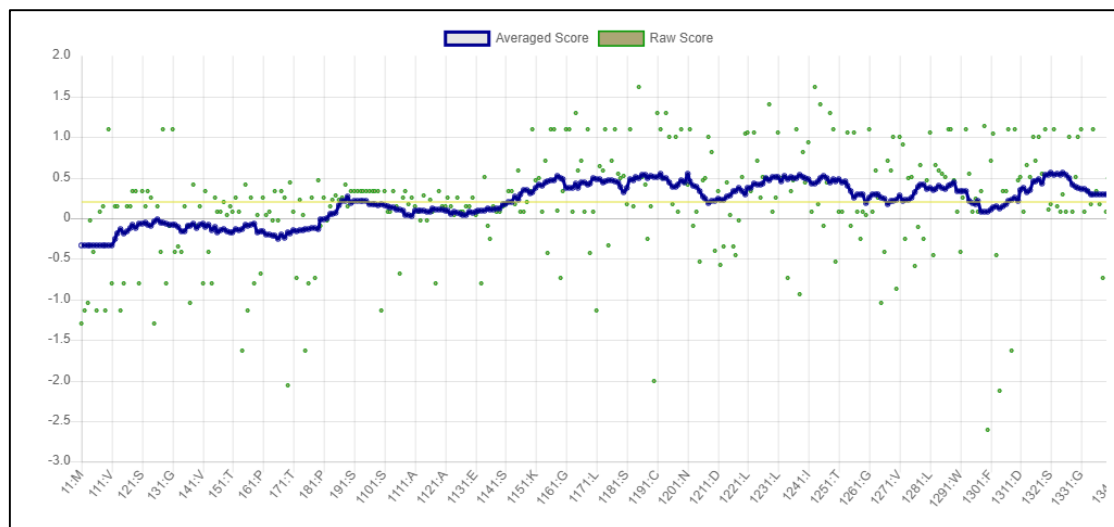


Figure S5. The plot for 3D/1D vs average score for model 1

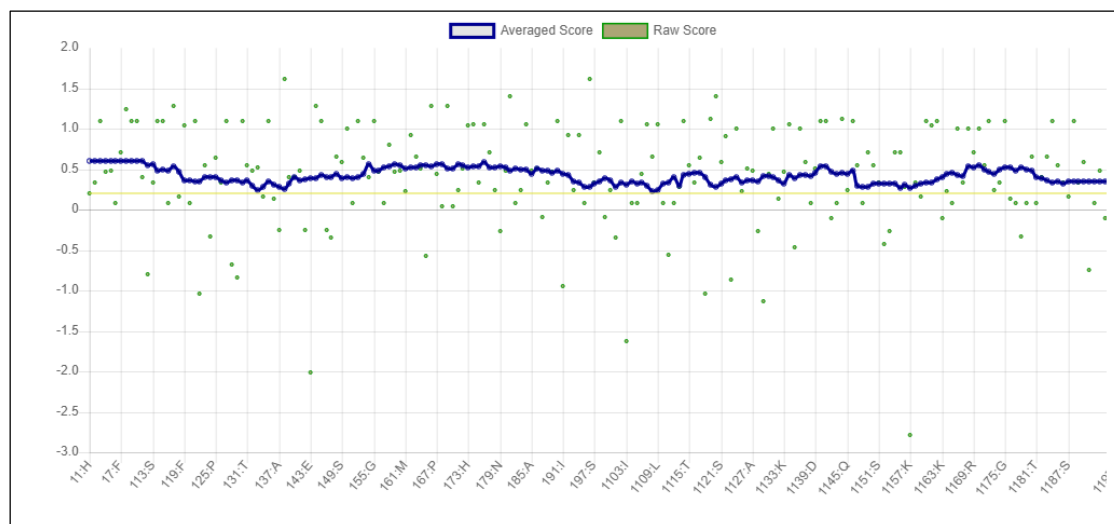


Figure S6. The plot for 3D/1D vs average score for model 2

Filename: challenges-1742399-supplementary.docx
Directory: C:\Users\MDPI\Documents
Template: C:\Users\MDPI\AppData\Roaming\Microsoft\Templates\Normal.
dotm
Title:
Subject:
Author: Amit Basu
Keywords:
Comments:
Creation Date: 6/28/2022 3:15:00 PM
Change Number: 7
Last Saved On: 7/6/2022 12:54:00 AM
Last Saved By: Amit Basu
Total Editing Time: 18 Minutes
Last Printed On: 7/6/2022 2:51:00 PM
As of Last Complete Printing
Number of Pages: 4
Number of Words: 152 (approx.)
Number of Characters: 872 (approx.)