

Table S1: Primer sequences.

Gene	Organism	Forward primer	Reverse primer
<i>Col1a1</i>	<i>Mus musculus</i>	CCAAGAAGACATCCCTGAAGTCA	TGCACGTCATCGCACACA
<i>Fn1</i>	<i>Mus musculus</i>	GGTGTACAACTTCCAATTACG	GGAATTTCCGCCTCGAGTCT
<i>Il6</i>	<i>Mus musculus</i>	ACTTCACAAGTCCGGAGAGG	TGCCATTGCACAACTCTTTTC
<i>Tnfa</i>	<i>Mus musculus</i>	CGGTCCCCAAAGGGATGAGAAGT	ATGATCTGAGTGTGAGGGTCTGGG
<i>Mcp1</i>	<i>Mus musculus</i>	CCAGCCTACTCATTGGGATCA	CTTCTGGGCCTGCTGTTCA
<i>Hprt</i>	<i>Mus musculus</i>	CCTAAGATGAGCGCAAGTTGAA	CCACAGGACTAGAACACCTGCTAA
<i>Gapdh</i>	<i>Mus musculus</i>	GAGCCCTTCCACAATGCCAAAGTT	TGTGATGGGTGTGAACCACGAGAA
<i>TGFA</i>	<i>Homo sapiens</i>	CTGCTGTGGCTACTGGTGC	CTTCACCAGCTCCATGTCCAT
<i>ACTA2</i>	<i>Homo sapiens</i>	AGAGCTACATAACACAGTTTCTCCTGA	CGAGATCTCACTGACTACCTCATG
<i>COL1A1</i>	<i>Homo sapiens</i>	CAAGAGGAAGGCCAAGTCGAC	TTGTCGCAGACGCAGCAGATCC
<i>FN1</i>	<i>Homo sapiens</i>	GGATGTGTGGCAGATAGGATGTATT	CAATGCGGTACATGACCCCT
<i>TNC</i>	<i>Homo sapiens</i>	TCGGTAGCCATCCAGGAGAG	CCATCTATGGCGTGATCCGG
<i>B2M</i>	<i>Homo sapiens</i>	ATATTCAAACCTCCATGATGC	ACCCCCACTGAAAAAGATGAG

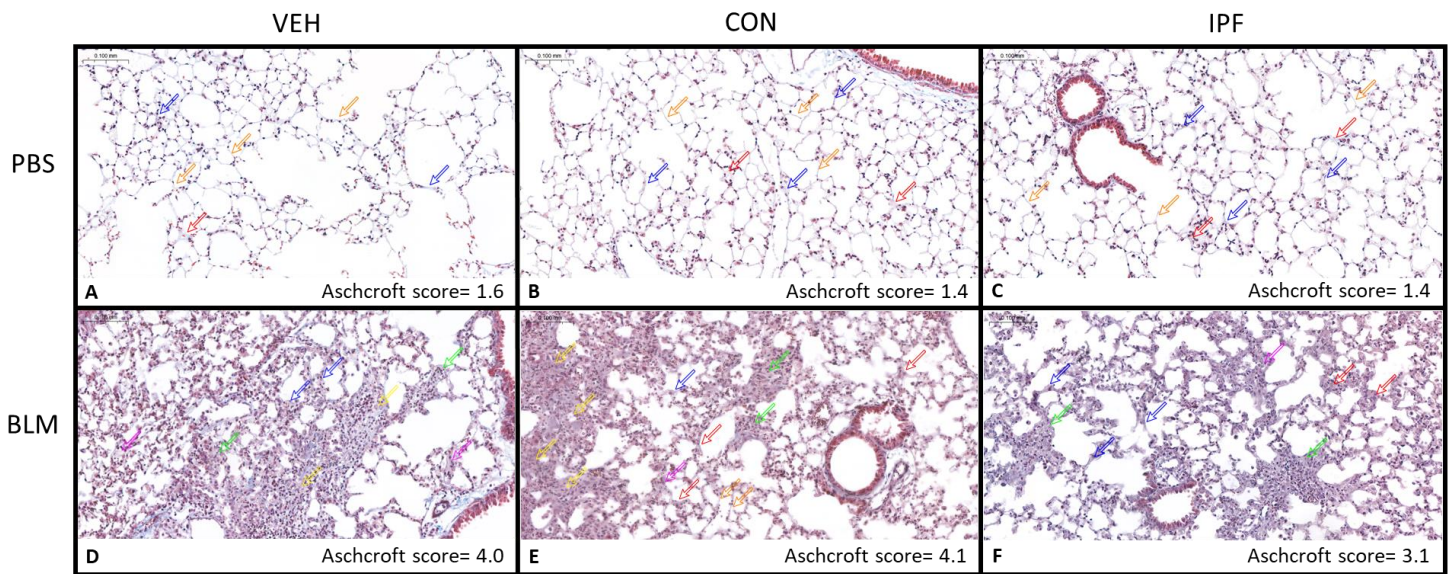


Figure S1. Histological evaluation of lung damage. Representative images of Masson's trichrome staining of one representative sample for each experimental group (PBS+VEH, PBS+CON, PBS+IPF, BLM+VEH, BLM+CON, BLM+IPF). Images were obtained at 20 \times . The mean Ashcroft score assessed by the modified Ashcroft scale of the selected samples is indicated. Coloured arrows indicate the grade of fibrosis in the selected field: orange, grade 0; blue, grade 1; red, grade 2; pink, grade 3; green, grade 4; yellow, grade 5. BLM: bleomycin, PBS: phosphate-buffered saline, VEH: vehicle, CON: control, IPF: idiopathic pulmonary fibrosis.

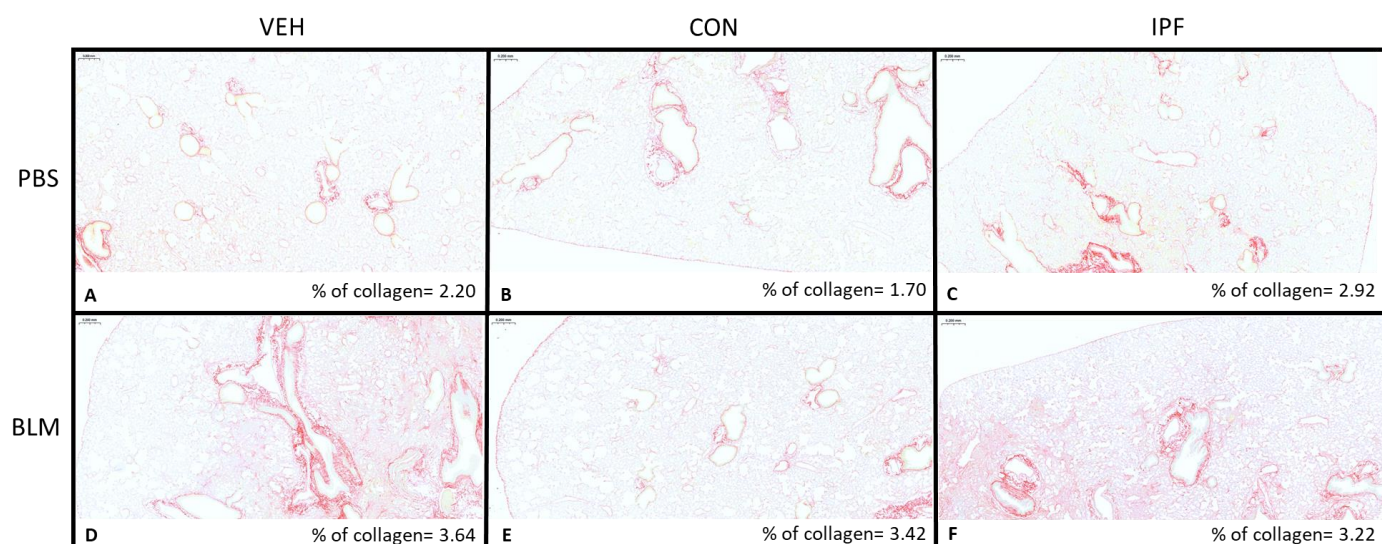


Figure S2. Histological assessment of lung collagen content. Representative images of Pricosirious Red staining of one representative sample for each experimental group (PBS+VEH, PBS+CON, PBS+IPF, BLM+VEH, BLM+CON, BLM+IPF). Images were obtained at 5x. The amount of collagen of the selected samples is indicated. Collagen quantification was expressed relative to the total lung area. BLM: bleomycin, PBS: phosphate-buffered saline, VEH: vehicle, CON: control, IPF: idiopathic pulmonary fibrosis.