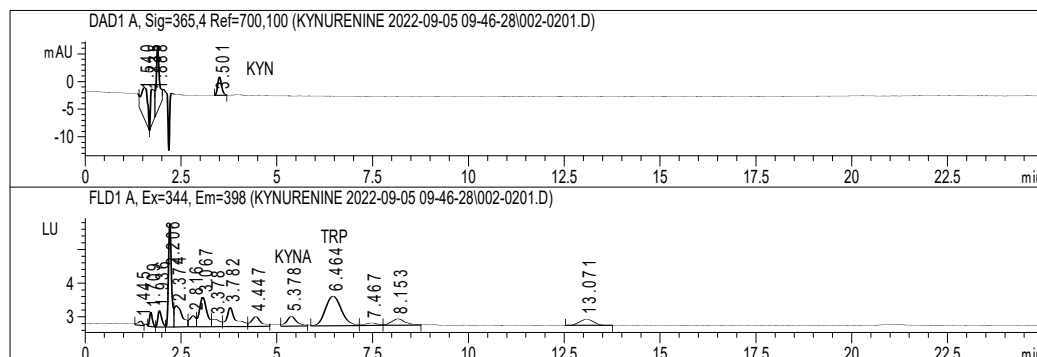
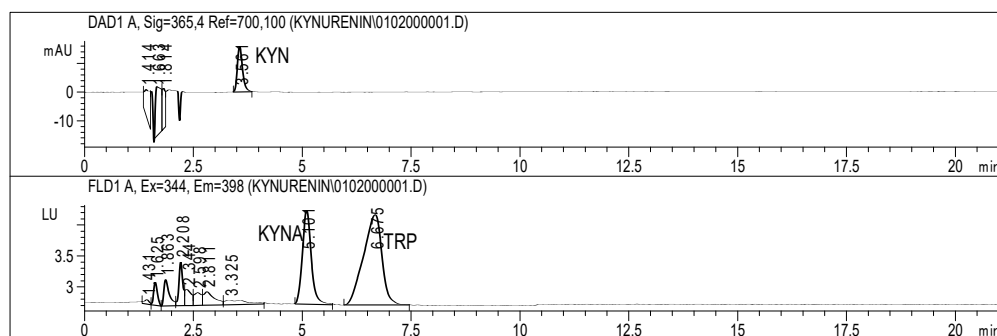


## Supplementary Materials:

**Figure S1:** Chromatogram of kynurenine (KYN), kynurenic acid (KYNA) and tryptophan (TRP) in human plasma



**Figure S2:** Chromatogram of kynurenine (KYN), kynurenic acid (KYNA) and tryptophan (TRP) standards

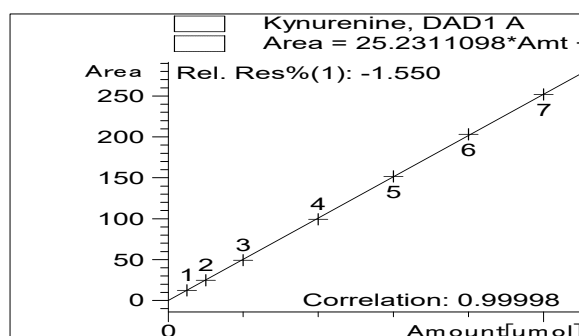


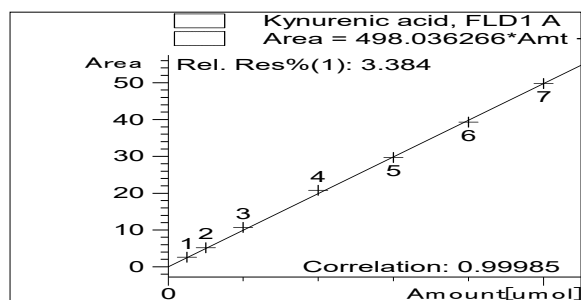
**Table S1:** Linearity curve, correlation coefficient, residual standard deviation (RSD) and retention time (RT) for HPLC determination of KYN, KYNA and TRP

Compound	Concentration range	Linearity curve*	Correlation coefficient	RSD	RT
KYN	0.5 -10 $\mu\text{mol/L}$	$y = 25.23x$	0.99998	0.99436	3.5
KYNA	5 -100 $\text{nmol/L}$	$y = 498.03x$	0.99985	0.52174	5.3
TRP	5 -100 $\mu\text{mol/L}$	$y = 1.25x$	0.99907	3.27371	6.5

\*Linearity curve is given according to the equation  $y = mx$ . Linearity was determined by seven-point calibration.

**Figure S3:** Calibration curve for kynurenine (KYN) determination



**Figure S4:** Calibration curve for kynurenic acid (KYNA) determination**Figure S5:** Calibration curve for tryptophan (TRP) determination