

Supplementary Materials

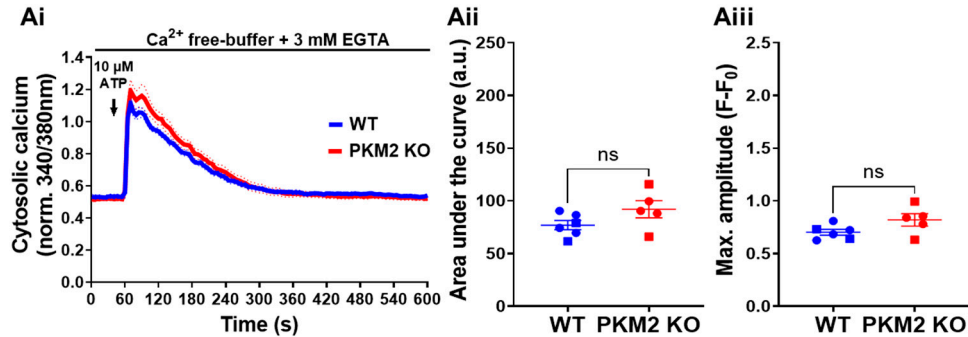


Figure S1. (Ai) Time-course of the Ca²⁺ responses evoked by 10 μ M ATP in HeLa WT (blue) and HeLa PKM2 KO (red) cells. The single-cell Ca²⁺ signals were measured in the absence of extracellular Ca²⁺ in cells loaded with Fura-2 AM. As indicated by the arrow, 10 μ M ATP was added after 60 s of baseline measurement. The curves are presented as the mean (bold line) \pm SEM (dashed line) of 2 independent experiments, each performed on 2-4 coverslips/experiment, >45 cells/coverslip. (Aii) Quantification of the area under the curve and (Aiii) maximal amplitude of the Ca²⁺ signals induced by 10 μ M ATP, shown in Ai. Significance was analyzed with Student's t-test (ns = no statistical difference).

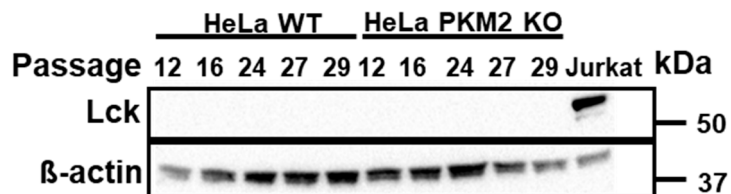


Figure S2. Western blot showing that HeLa WT and PKM2 KO cells do not express Lck. Cell lysates from 5 different passages are shown. β -actin was used as loading control. Anti-Lck antibody was diluted 1:1000. A Jurkat T cell lysate was used as positive control.