

Figure S1. Cbfb loss induces catabolic factors expression. (a and b) Mmps and inflammatory cytokine expression were performed by qRT-PCR.

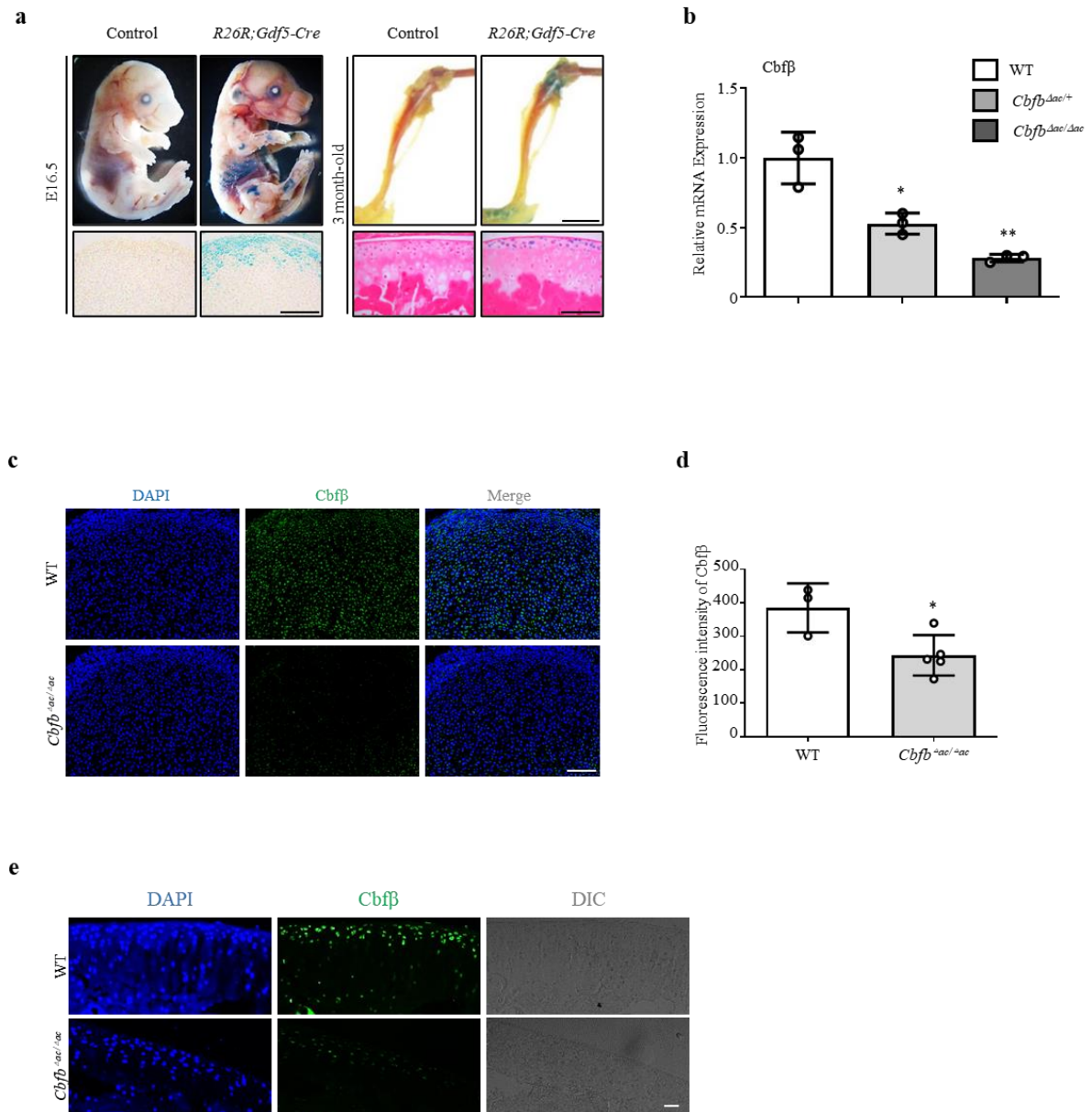


Figure S2. The *Gdf5-Cre* transgene is active in articular cartilage. (a) X-gal stained whole embryos and paraffin sections of the humerus from *R26R;Gdf5-Cre* and WT mice at embryonic day 16.5 (E16.5) (left panel). X-gal stained hindlimb (blue areas) and paraffin sections of the tibia joint from *R26R;Gdf5-Cre* and WT mice at 3 months (right panel). (b) The expression of *Cbfb* in the *Cbfb^{Δac/Δac}* articular chondrocytes was determined by qRT-PCR. (c) The expression of *Cbfb* in articular chondrocytes at E16.5 was imaged by immunofluorescent staining, and its quantification was evaluated using Image J (d). (e) The expression of *Cbfb* in articular chondrocytes at 20-week-old mice were imaged by immunofluorescent staining. DIC, differential interference contrast.