

Figure S1

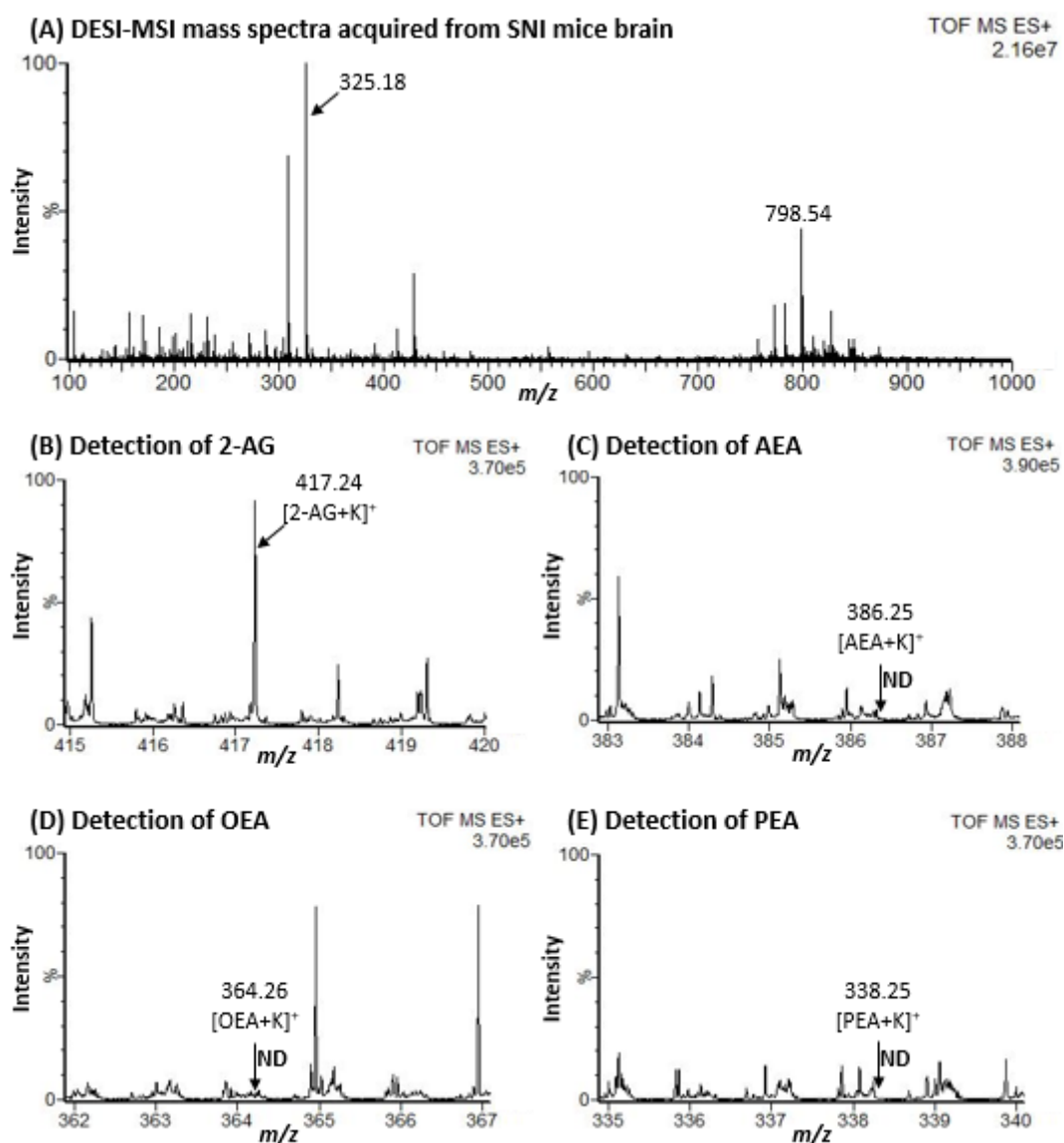


Figure S1: DESI-MSI spectra acquired from the coronal section of SNI mice brain. (A) Whole DESI-MSI spectra acquired from SNI mice brain. (B) m/z peak corresponding to 2-arachidonoylglycerol (2-AG) was detected in DESI-MSI spectra. (C-E) m/z peaks corresponding to anandamide (AEA), oleoylethanolamide (OEA), and palmitoylethanolamide (PEA) were not detected (ND) in the DESI-MSI spectra.