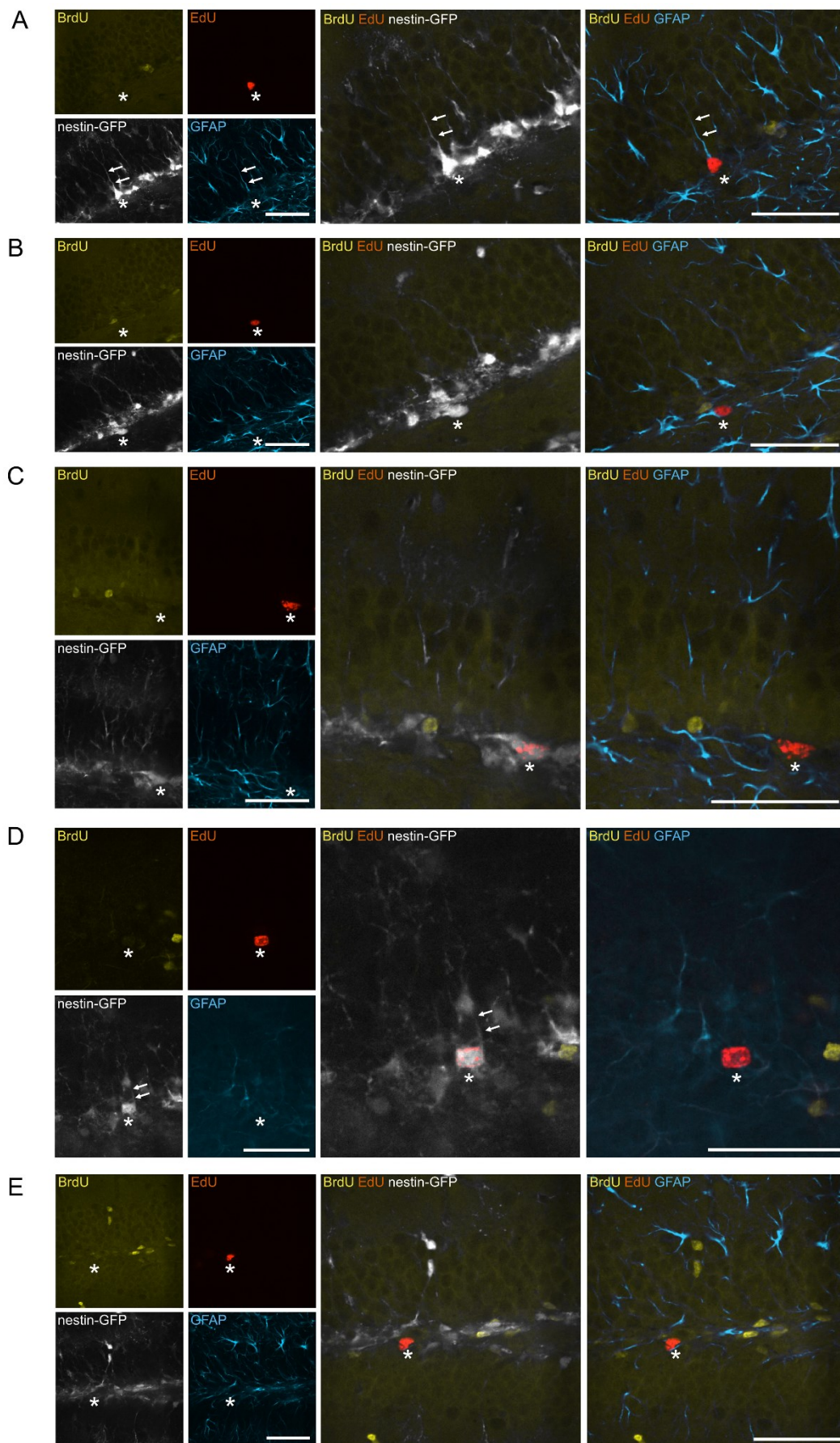


Supplementary Figure S1 (related to Figure 2B). Detection of *de novo* dividing in the hippocampal dentate gyrus through double nucleotide analogue labeling. The image is a maximal projection of a Z-stack captured with a confocal microscope. Red asterisks indicate $\text{EdU}^+\text{BrdU}^-$ nuclei. Scale bar: 100 μm .



Supplementary Figure S2 (related to Figure 2D). Representative images of the identified phenotypes of $\text{EdU}^+\text{BrdU}^-$ cells. **A** $\text{GFP}^+\text{GFAP}^+\text{process}^+$ RGLs, **B** $\text{GFP}^+\text{GFAP}^+\text{process}^-$ presumptive RGLs, **C** $\text{GFP}^+\text{GFAP}^-\text{process}^-$, **D** $\text{GFP}^+\text{GFAP}^-\text{process}^+$, and **E** $\text{GFP}^+\text{GFAP}^-\text{process}^-$. Here, images are single optical section captured with a

confocal microscope. Asterisks indicate bodies of $\text{EdU}^+\text{BrdU}^-$ cells. Arrows indicate an apical process. Scale bars: 50 μm .

Supplementary Table S1 (related to Figure 2D). Percentages of specific cell phenotypes within the EdU⁺BrdU⁻ population.

Phenotype	Percentages for individual mice (%)						mean (%)	SEM (%)
	1	2	3	4	5	6		
EdU ⁺ BrdU ⁻ GFP ⁺ GFAP ⁺ process ⁺ (RGLs)	57.2	41.7	50	72.6	25	70.5	52.8	7.3
EdU ⁺ BrdU ⁻ GFP ⁺ GFAP ⁺ process ⁻ (presumptive RGLs)	14.5	16.6	50	4.6	33.1	17.5	22.7	6.6
EdU ⁺ BrdU ⁻ GFP ⁺ GFAP ⁻ process ⁻	21.4	33.1	0	9.3	16.9	6	14.5	4.9
EdU ⁺ BrdU ⁻ GFP ⁻ GFAP ⁻ process ⁻	6.9	0	0	0	25	0	5.3	4.1
EdU ⁺ BrdU ⁻ GFP ⁺ GFAP ⁻ process ⁺	0	8.6	0	13.5	0	6	4.7	2.3