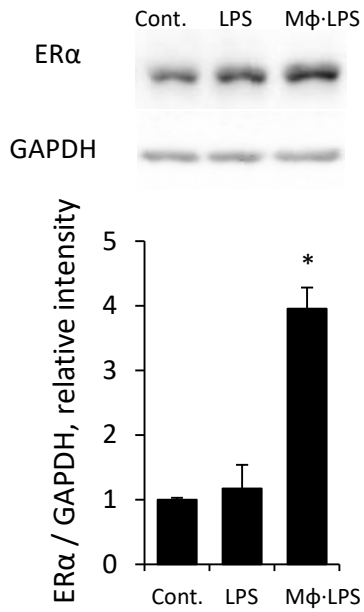
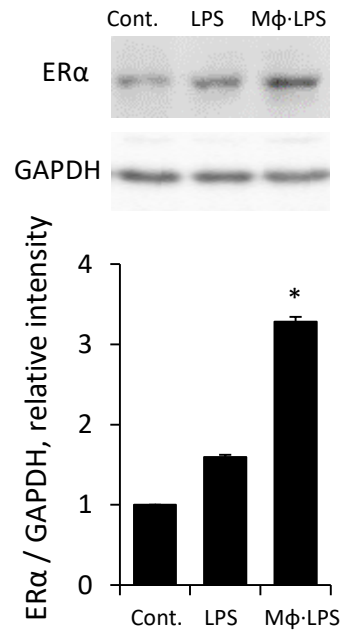


## E0771



## MCF7



**Supplementary Figure S3.** E0771 (left) and MCF7 (right) cells were either remained untreated (Cont.) or incubated (24 h, 37°C) with LPS or medium conditioned by macrophages stimulated by LPS at concentration 0.1 ng/ml (Mφ-LPS). ERα protein levels were determined by immunoblotting (top) and quantified using ImageJ software (bottom). Intensity ratio for ERα /GAPDH is shown. The data are representative of at least 3 independent experiments; error bars represent  $\pm$ SD. \* $p < 0.007$ .