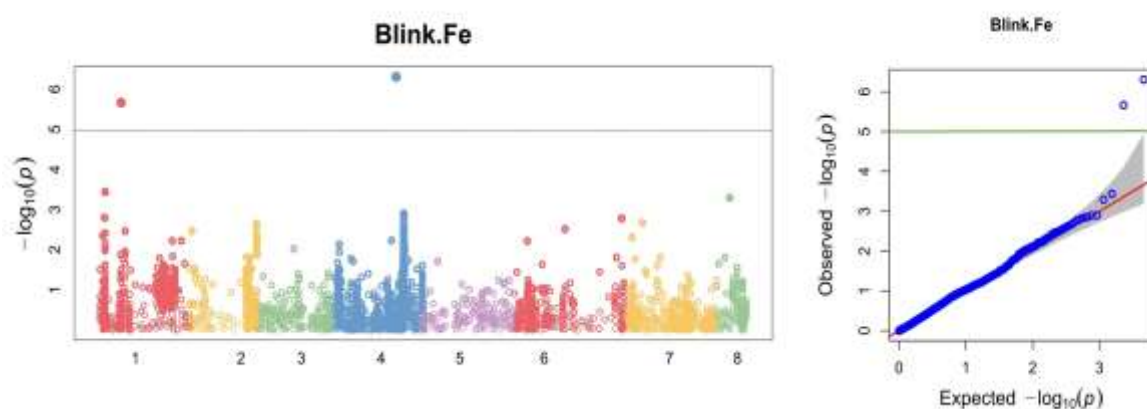
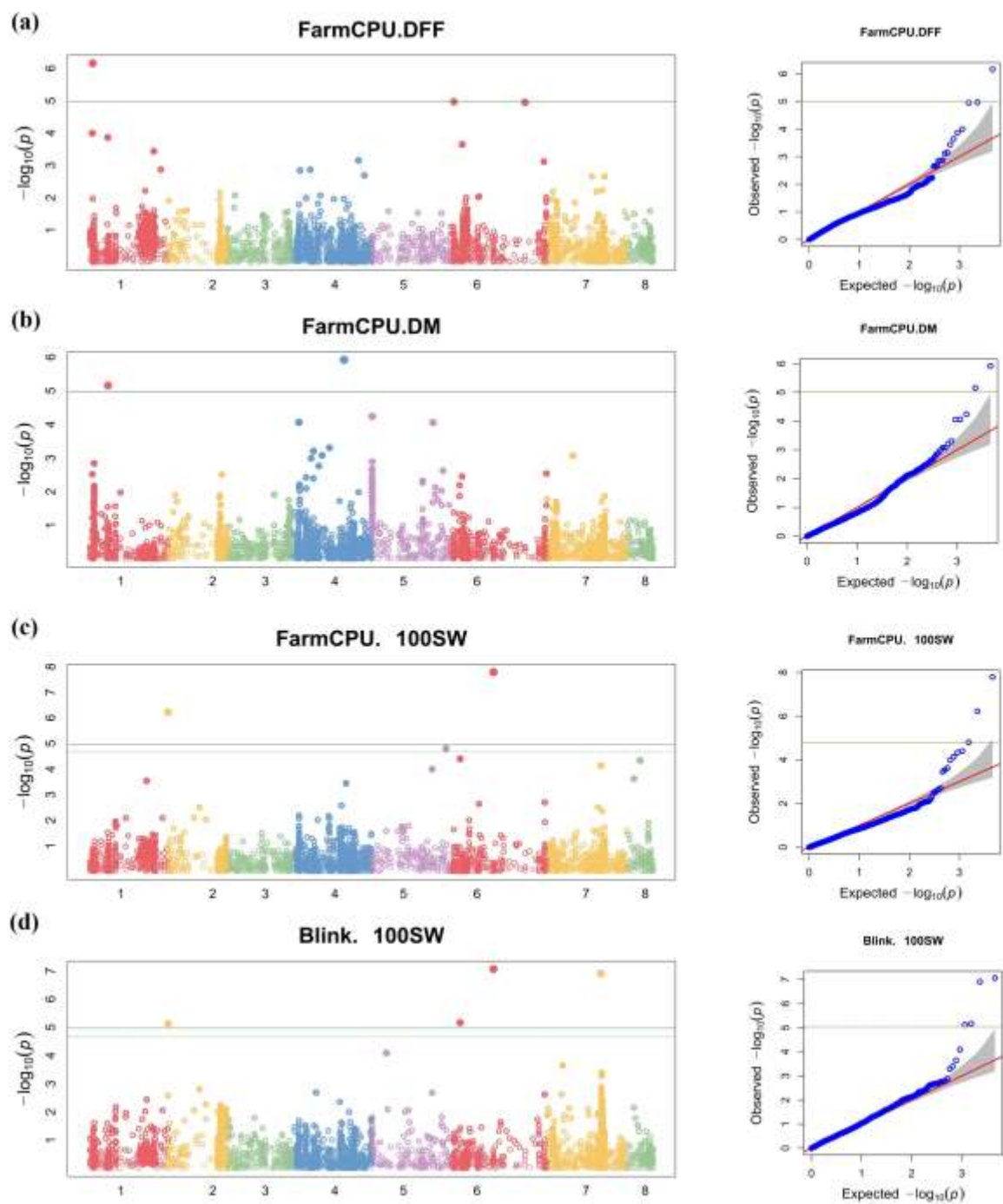


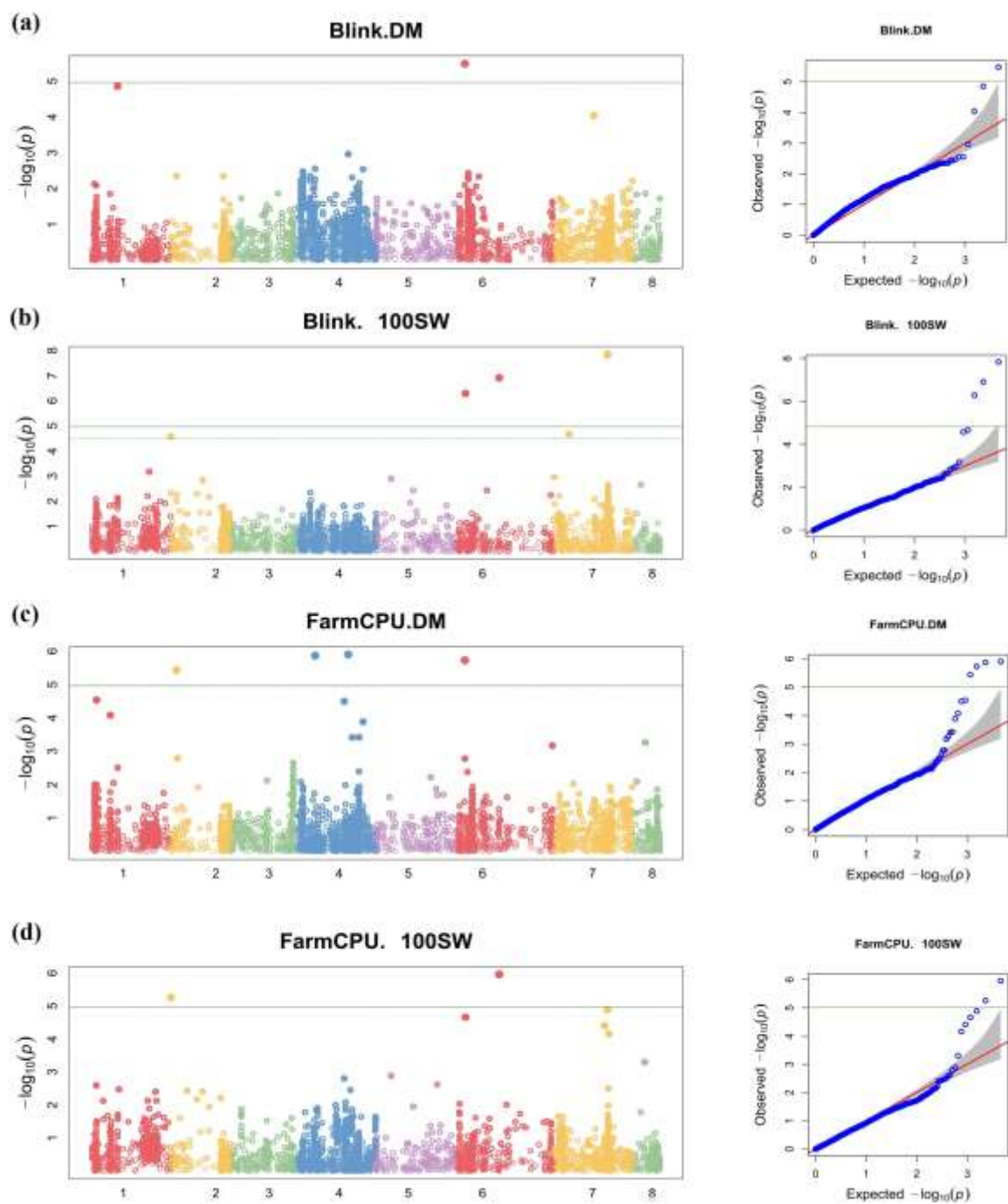
Supplementary Figure S1. Manhattan plots illustrated significant P-value associated with grain protein content in chickpea under NSI.



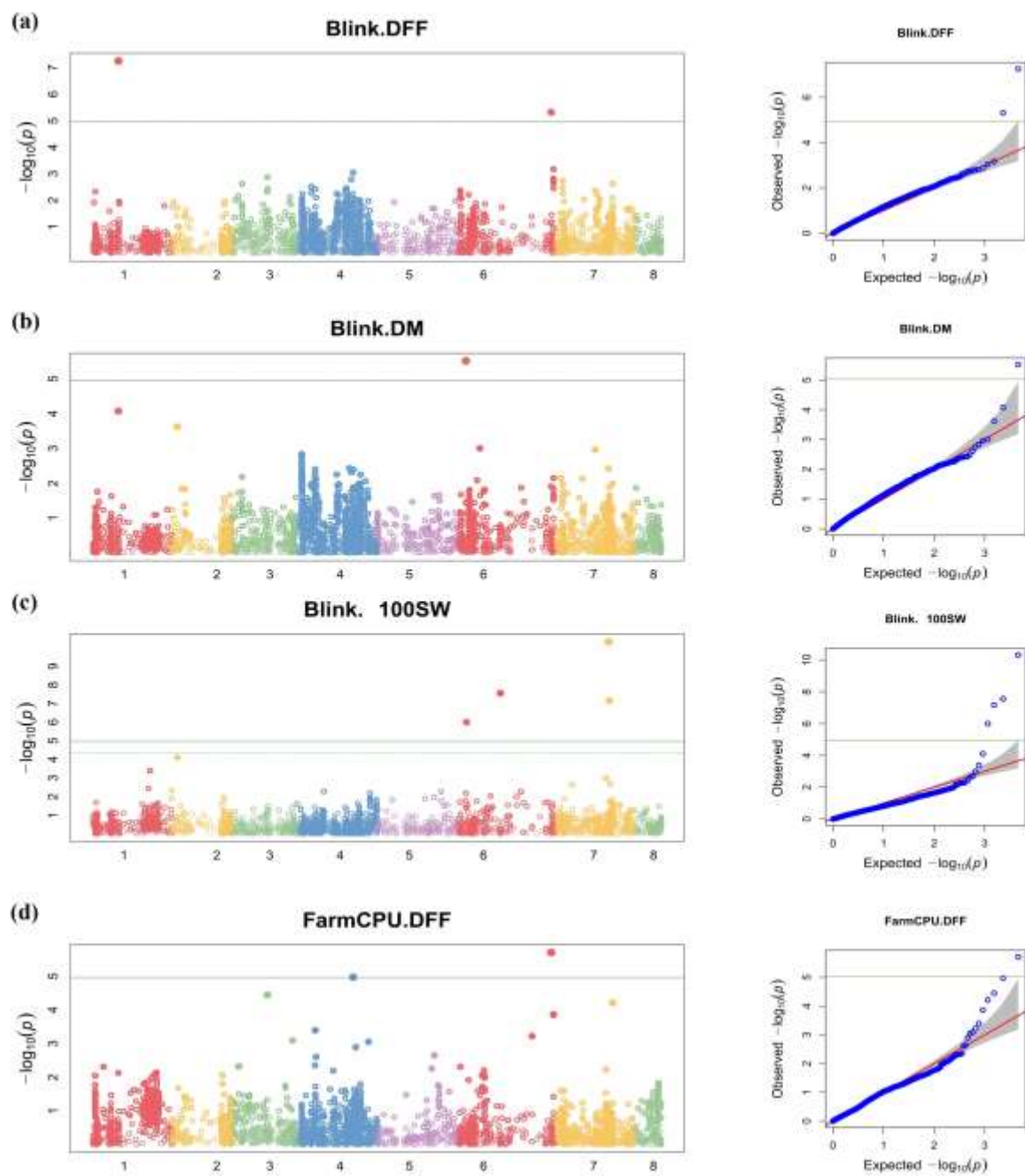
Supplementary Figure S2. Manhattan plots illustrated significant P-value associated with grain Fe content in chickpea under NSII.



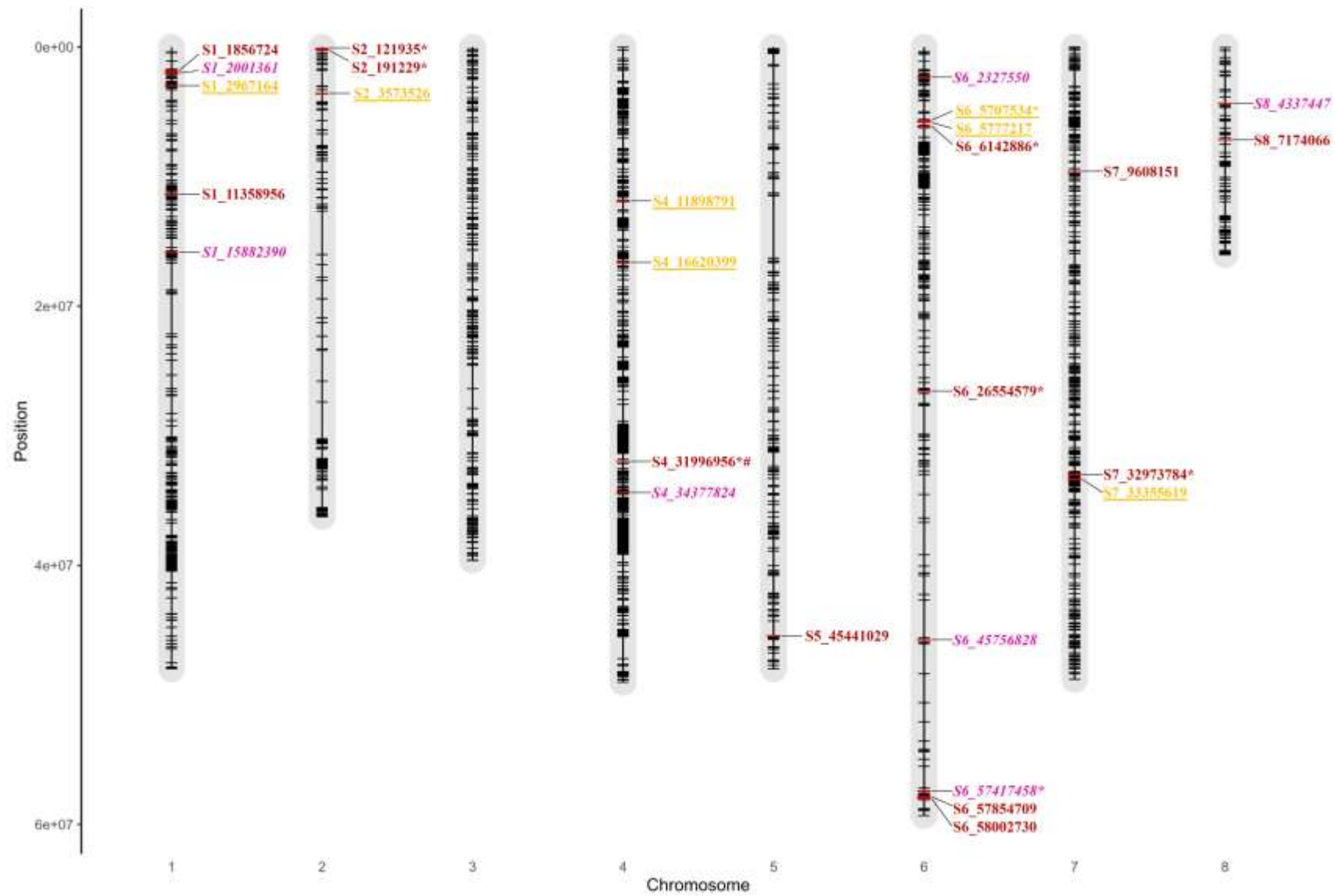
Supplementary Figure S3. Manhattan plots illustrated significant P-value associated with, DFF (a), DM (b), 100 SW (c and d) in chickpea under NSI. Dotted line-suggestive MTAs at FDR cutoff $P < 0.05$.



Supplementary Figure S4. Manhattan plots illustrated significant P-value associated with DM (a and c), 100 SW (b and d) in chickpea under pooled seasons. Dotted line-suggestive MTAs at FDR cutoff $P < 0.05$.



Supplementary Figure S5. Manhattan plots illustrated significant P-value associated with DFF (a and d), DM (b), 100 SW (c) in chickpea under NSII. Dotted line-suggestive MTAs at FDR cutoff $P < 0.05$.



Supplementary Figure S6. Visualization of significantly associated SNPs (MTAs) along with co-associated SNPs (*) over the seasons on chickpea chromosomes for DFF (Pink- **Bold Italic**), DM (Yellow-**Bold underline**), 100 SW (Maroon- **Bold**).