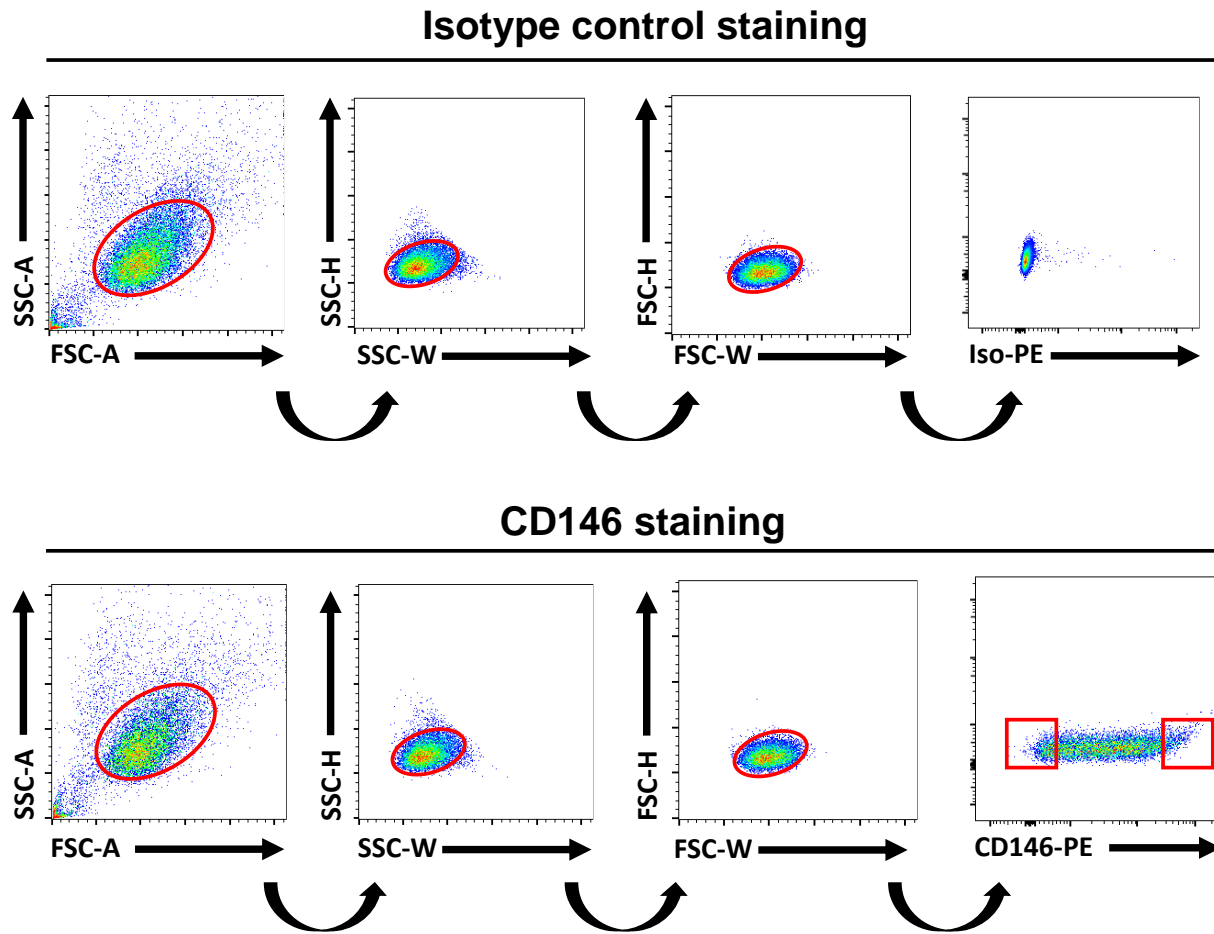


Supplementary figure S1: Dot blots assessment of sorted MSCs. As shown in this panel, both CD146^{lo} and CD146^{hi} MSCs are devoid of any population aggregates.



Supplementary figure S2: Gating strategy used for flow-cytometry analysis and sorting. The upper panels represent the CD146 isotype staining. The lower panels represent the gating strategy using the CD146 antibody.