

Proteomics, phosphoproteomics and miRNA analysis of circulating extracellular vesicles through automated and high-throughput isolation

Hao Zhang^{1,2#}, Yu-han Cai^{1#}, Yajie Ding¹, Guiyuan Zhang^{1,3}, Yufeng Liu^{1,3}, Jie Sun¹, Dong Wei¹, Yuchen Yang⁴, Zhen Zhan¹, Anton Iliuk⁵, Zhongze Gu¹, Yanhong Gu⁴, W. Andy Tao^{5,6*}

Supplementary Material

SUPPLEMENTARY FIGURE CAPTION

Figure S1 Optimization of automatic extraction instrument. A. the magnetic beads dosage. B. Incubation time. C. Washing time. D. Elution speed.

Figure S2 RPS (Range 150 nm-500 nm) characterization of EVs isolated by the three methods.

Figure S3 Intersection of exosome proteomics results with different capture methods and TOP100 protein in ExoCarta database

Figure S4 Workflow of EV miRNA analyses of urine samples from patients with prostatitis or prostatesis (Control) and prostate cancer.

Figure S5 PCA (Principal Components Analysis) of EV protein (Left) and phosphorylated protein (Right).

Figure S6 GO analysis of EV differential proteins.

Figure S7 KEGG analysis of EV differential proteins.

Figure S8 Other potential biomarkers of urinary exosomes in prostate cancer

Figure S9 Comparison of miR-125b/miR-145 results in urine exosomes between control and prostate cancer groups

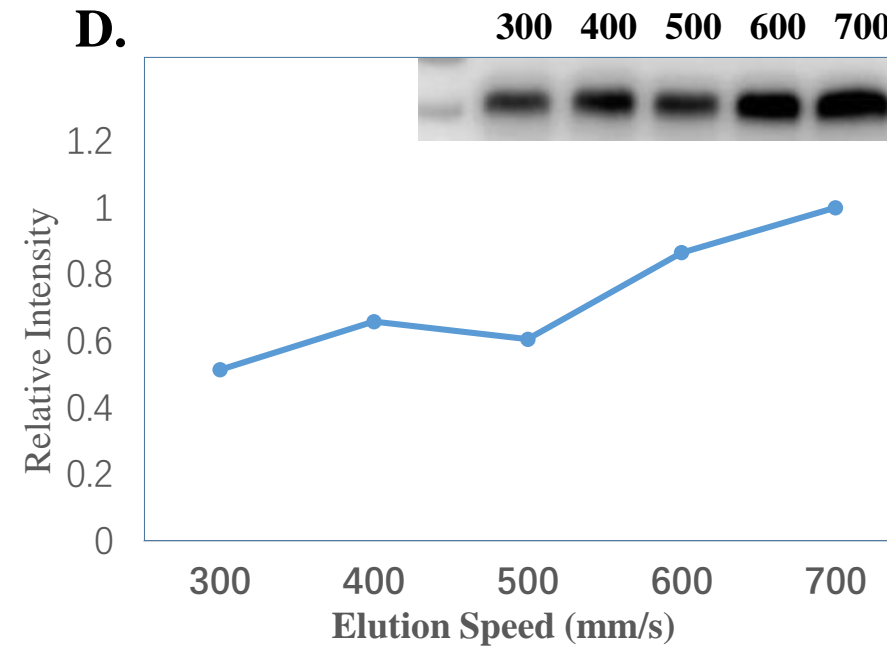
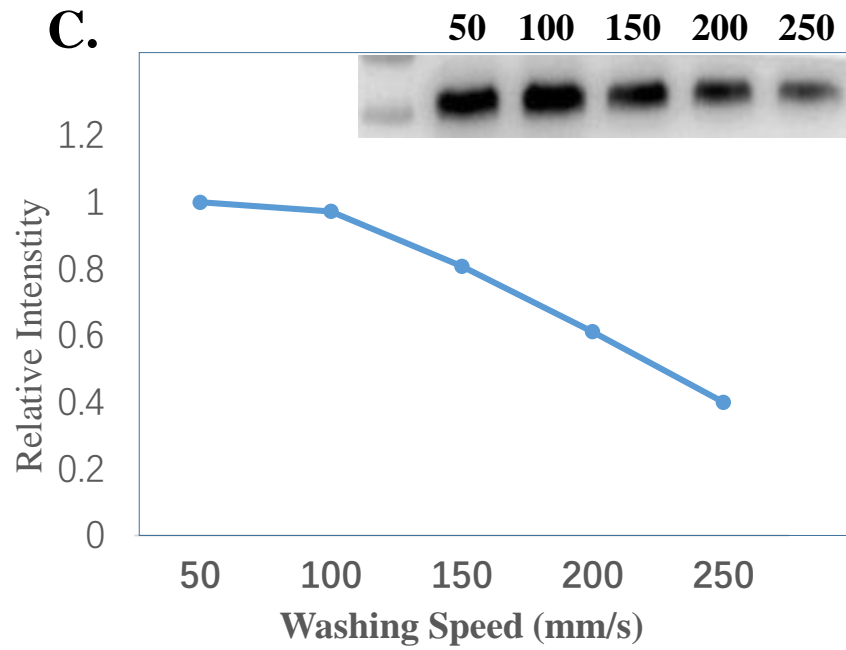
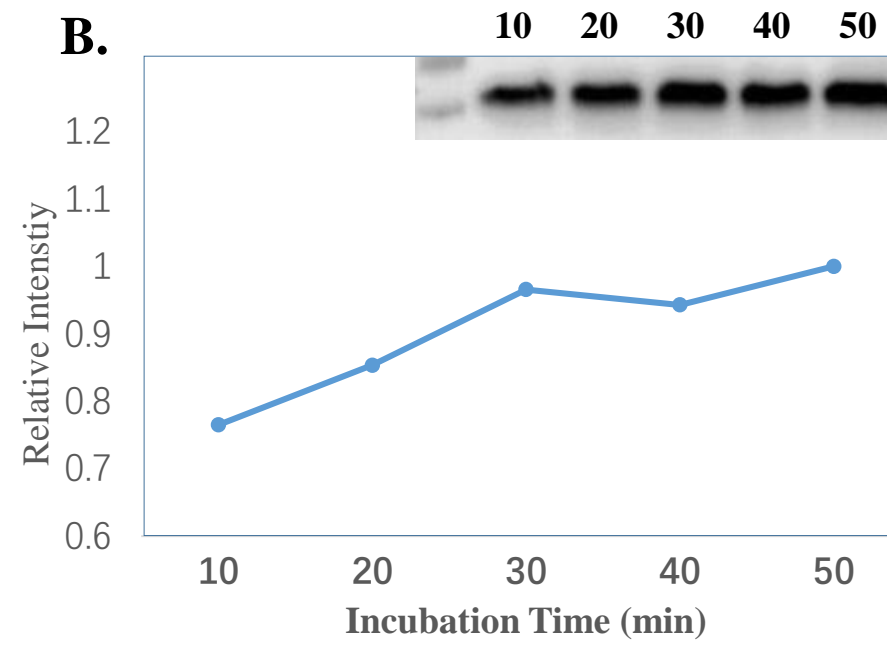
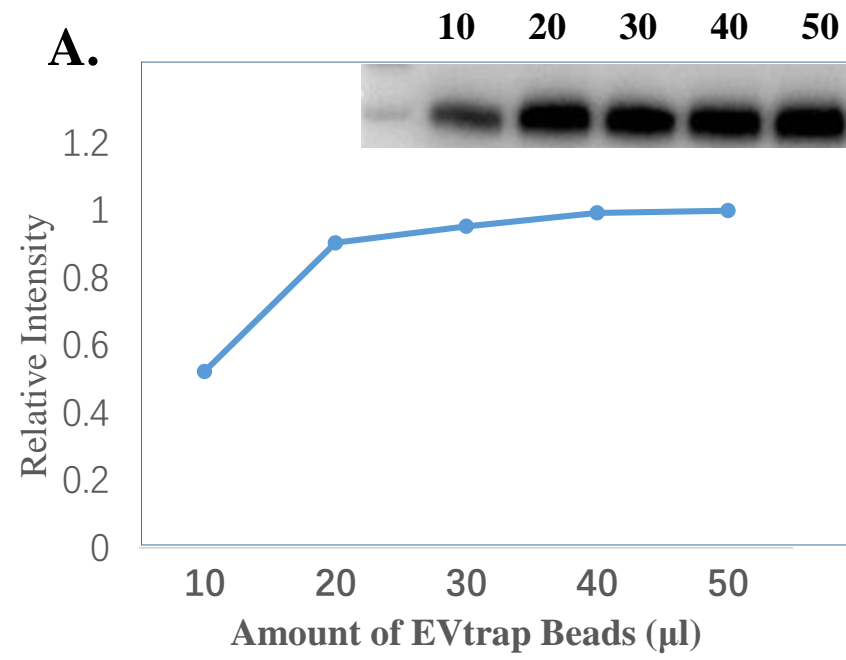


Figure S1

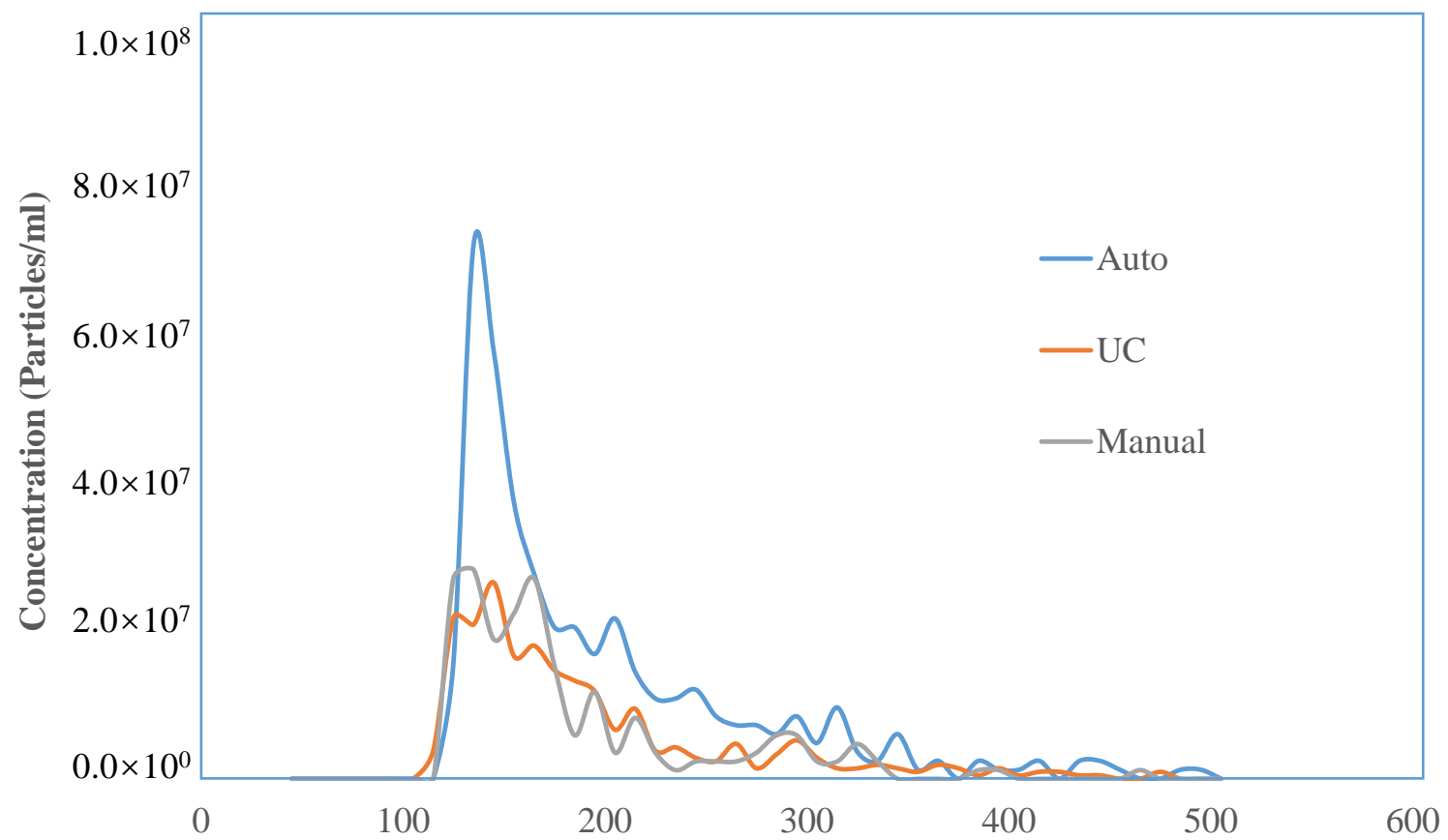


Figure S2

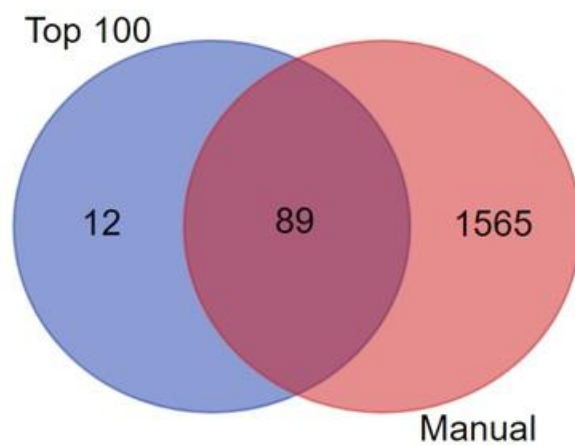
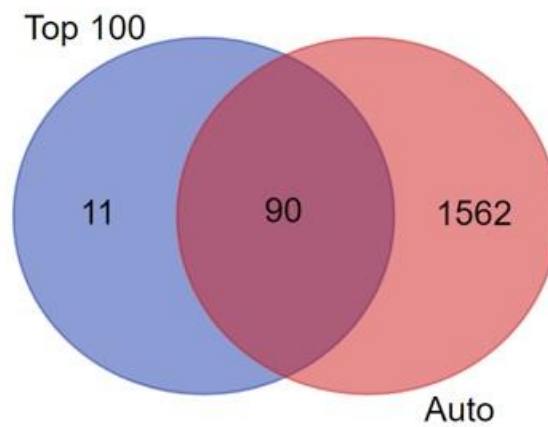
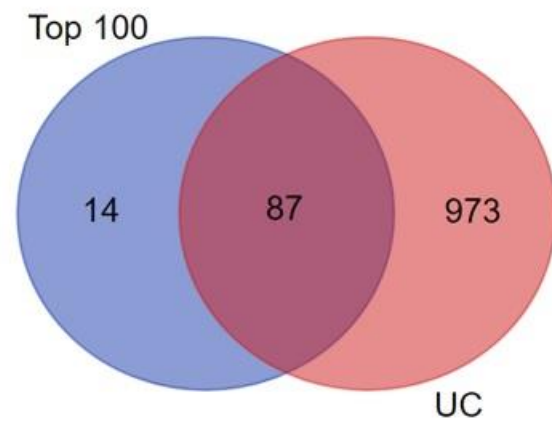


Figure S3

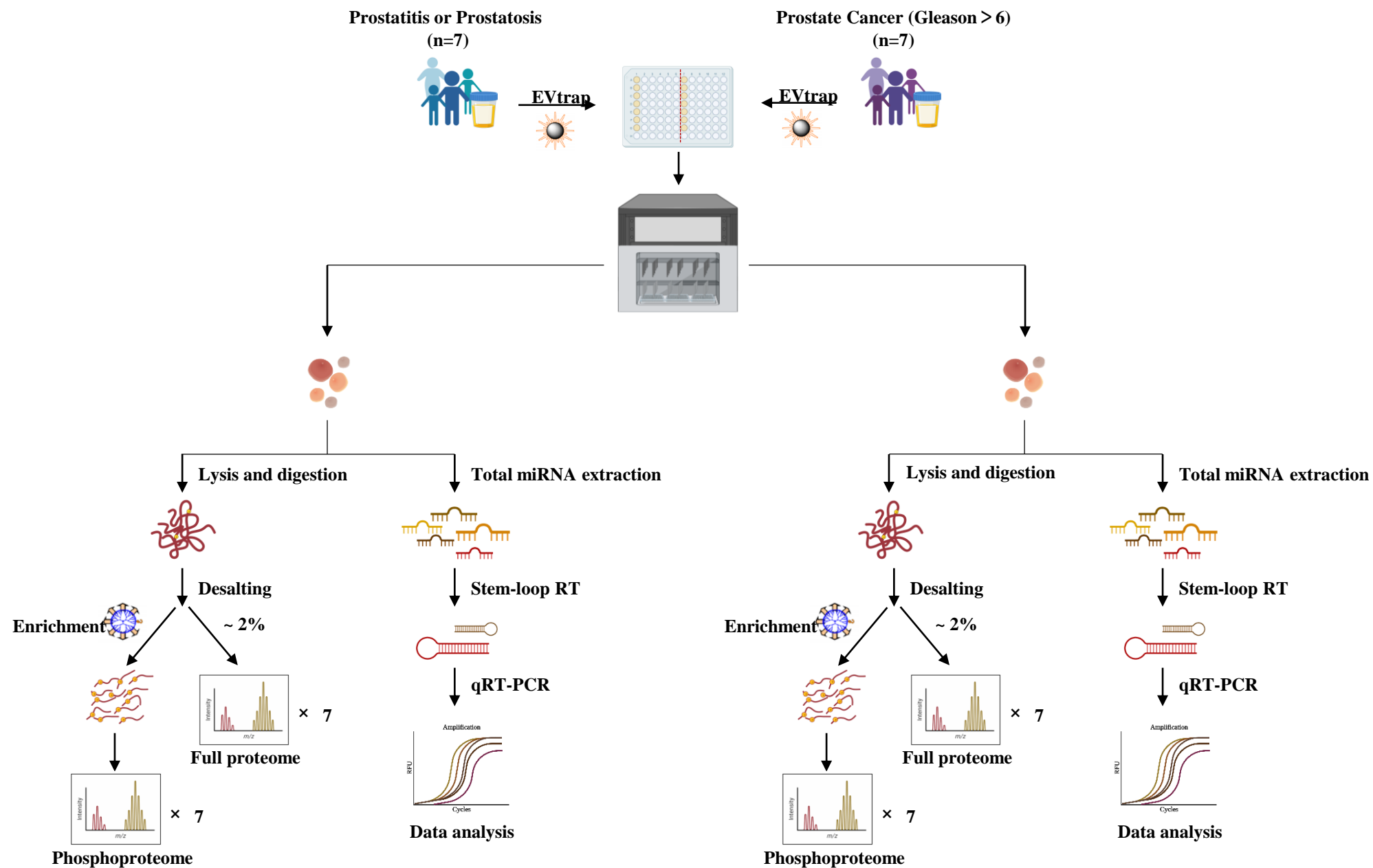


Figure S4

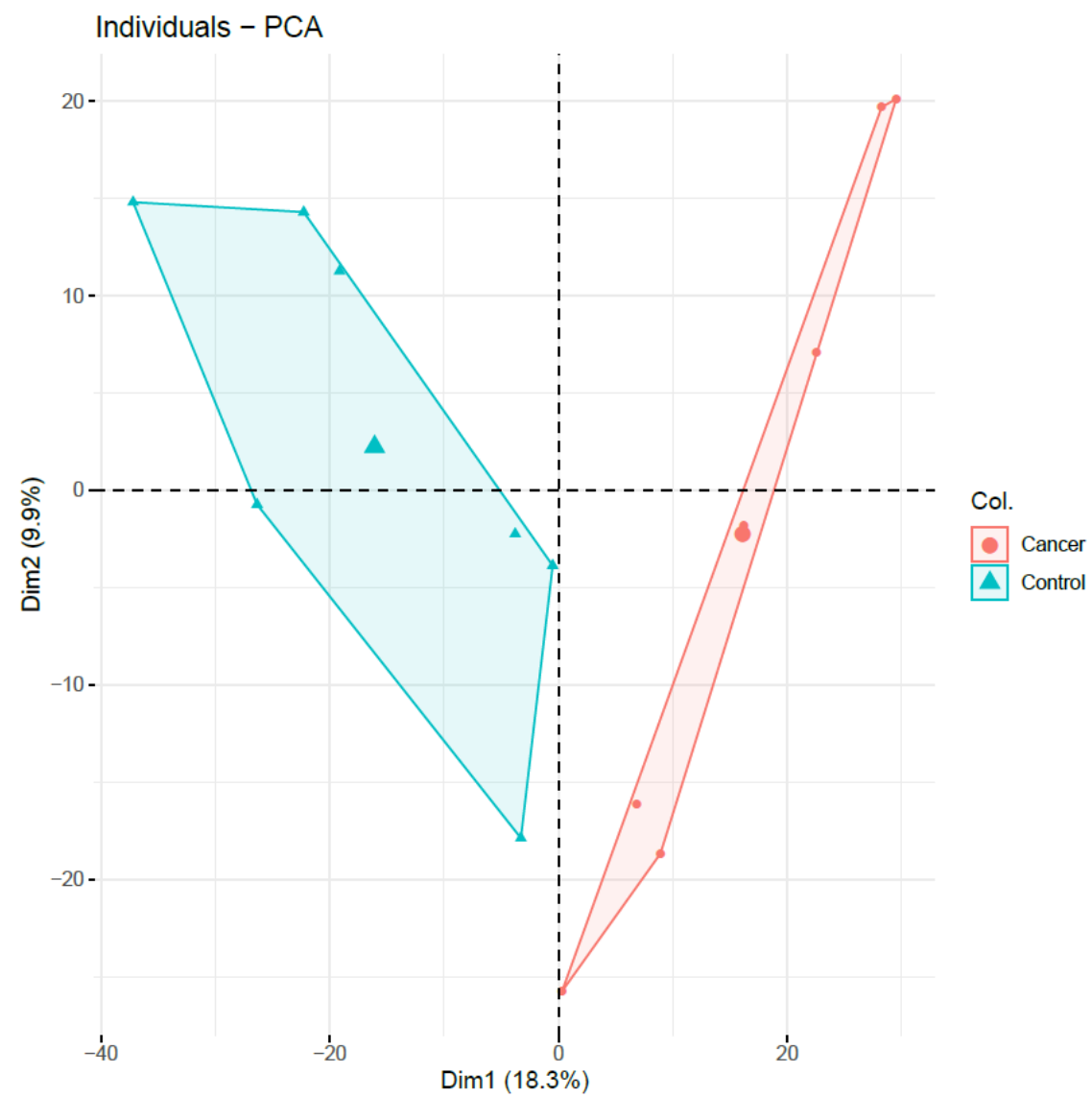
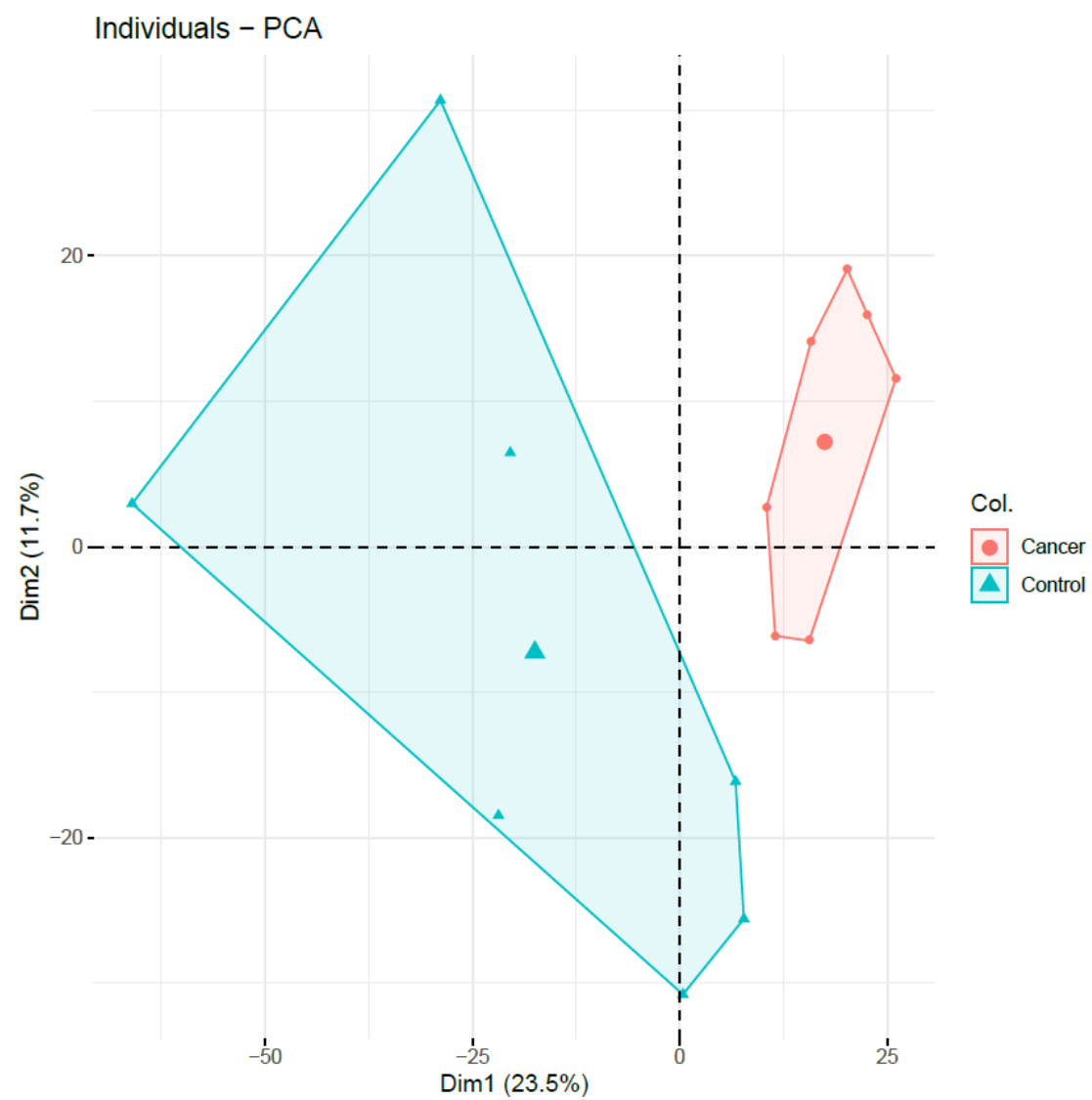


Figure S5

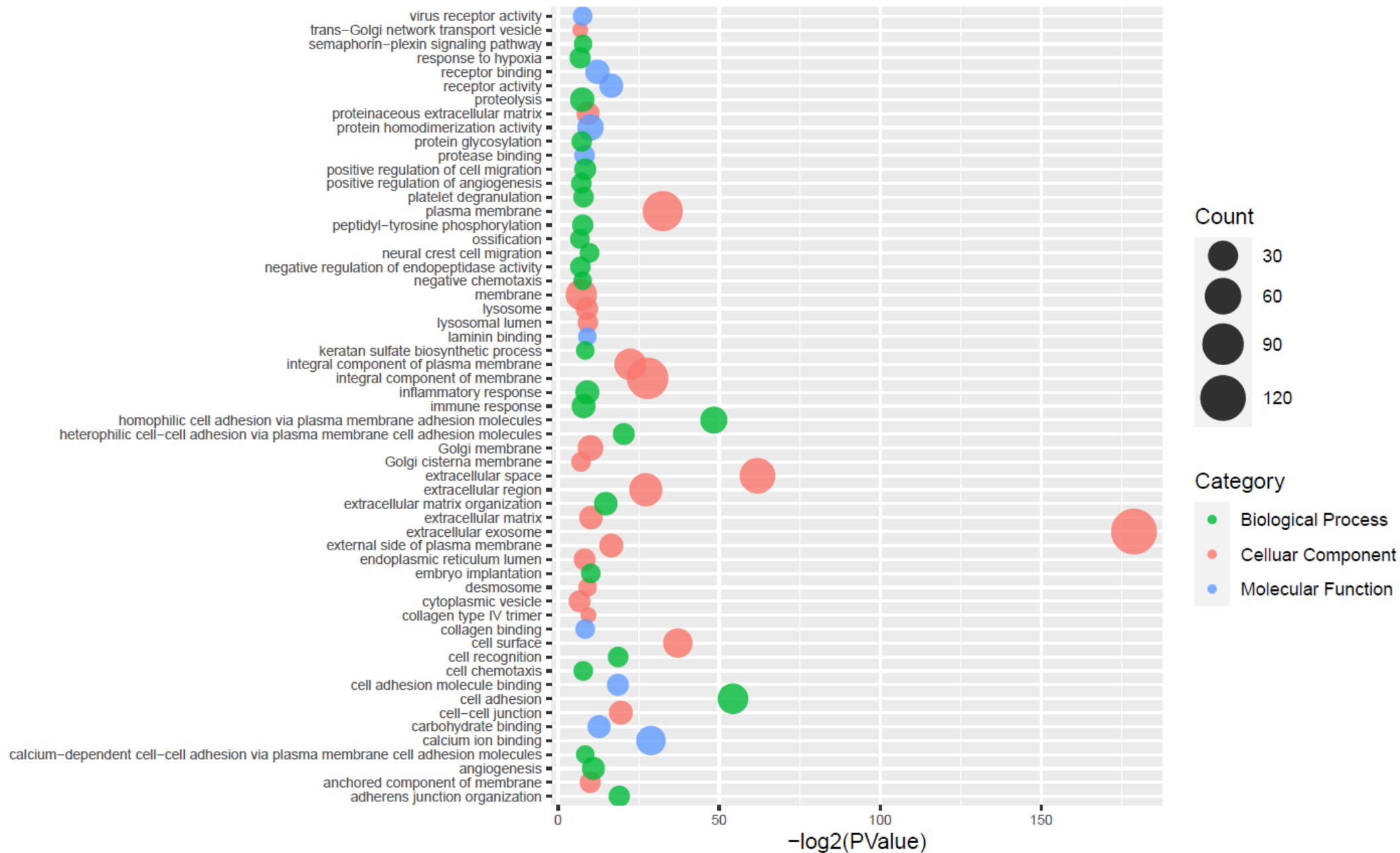


Figure S6

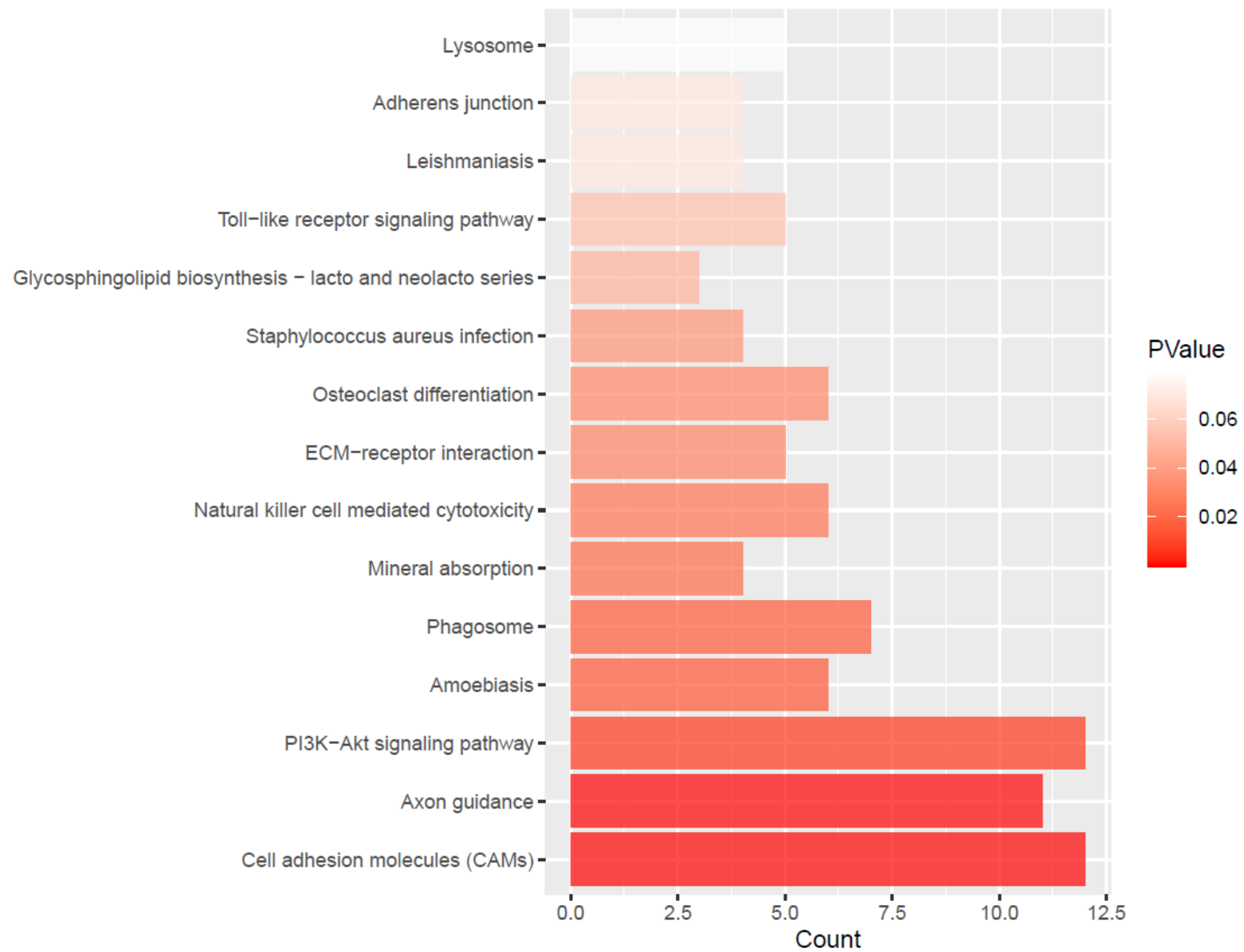
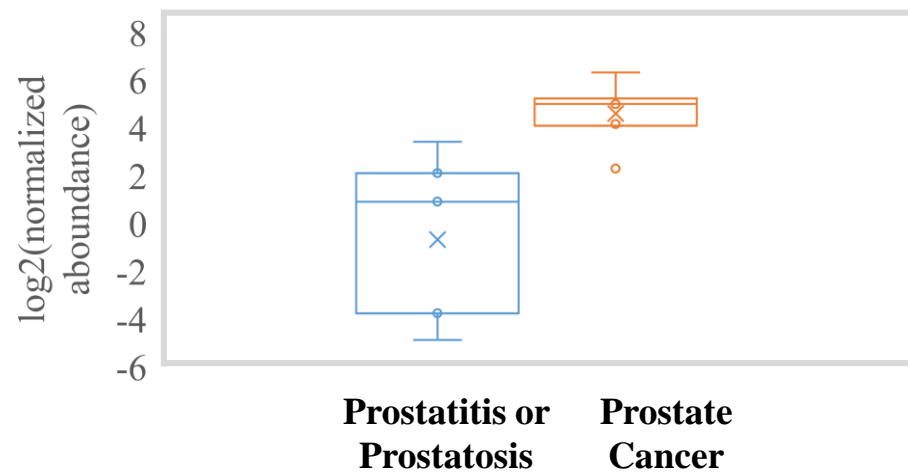
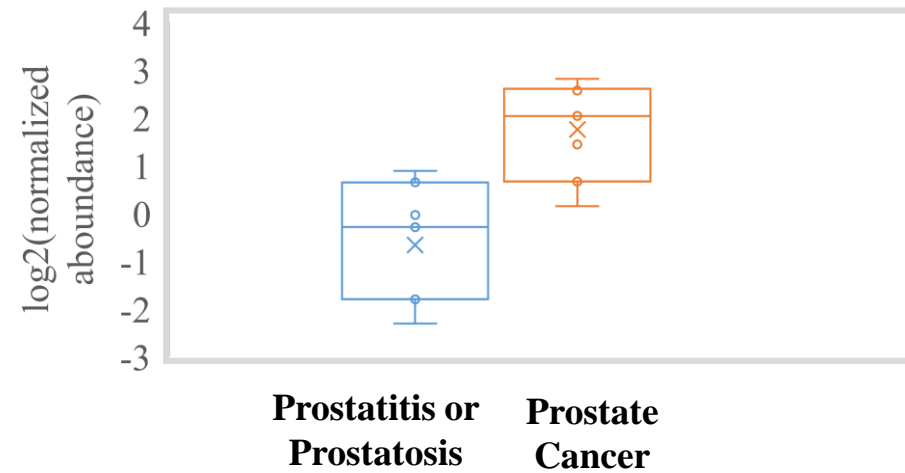


Figure S7

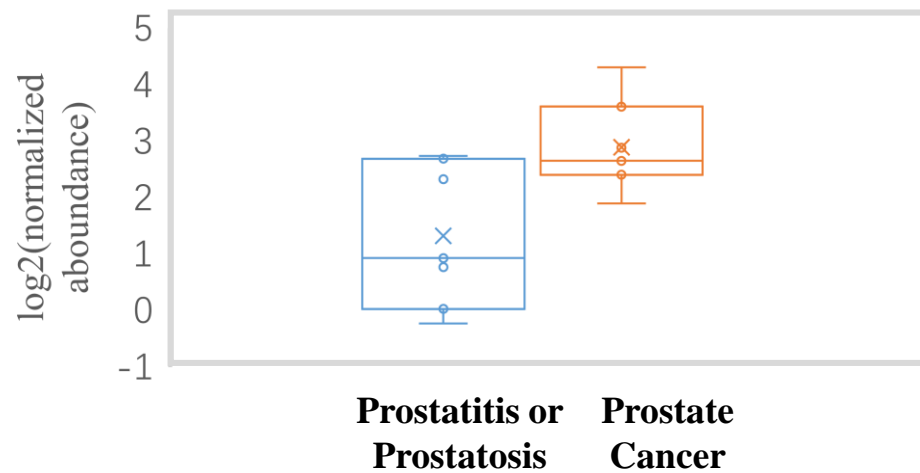
Cell surface glycoprotein MUC18 (MCAM)



Immunoglobulin superfamily member 8 (IGSF8)



Galectin-3 (LGALS3)



Endoglin (ENG)

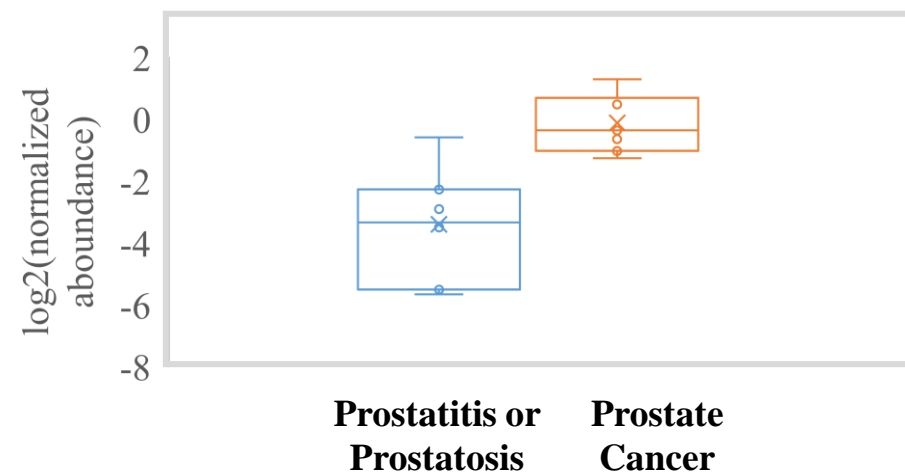


Figure S8

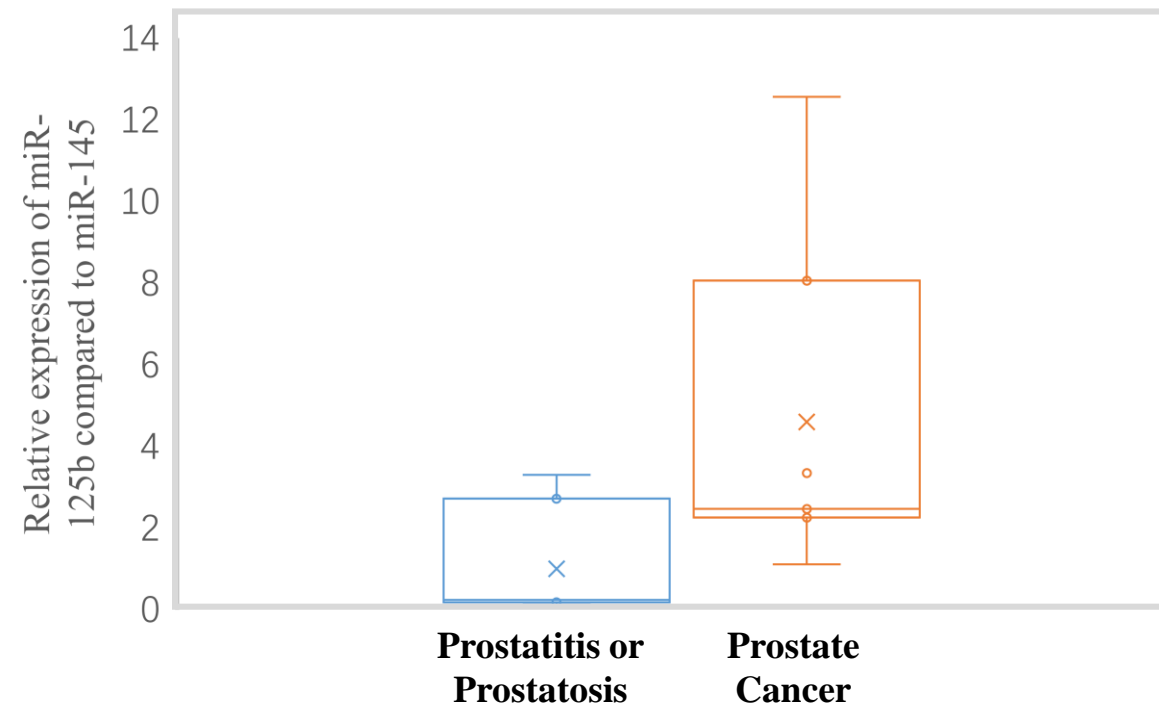


Figure S9