

Supplementary Material

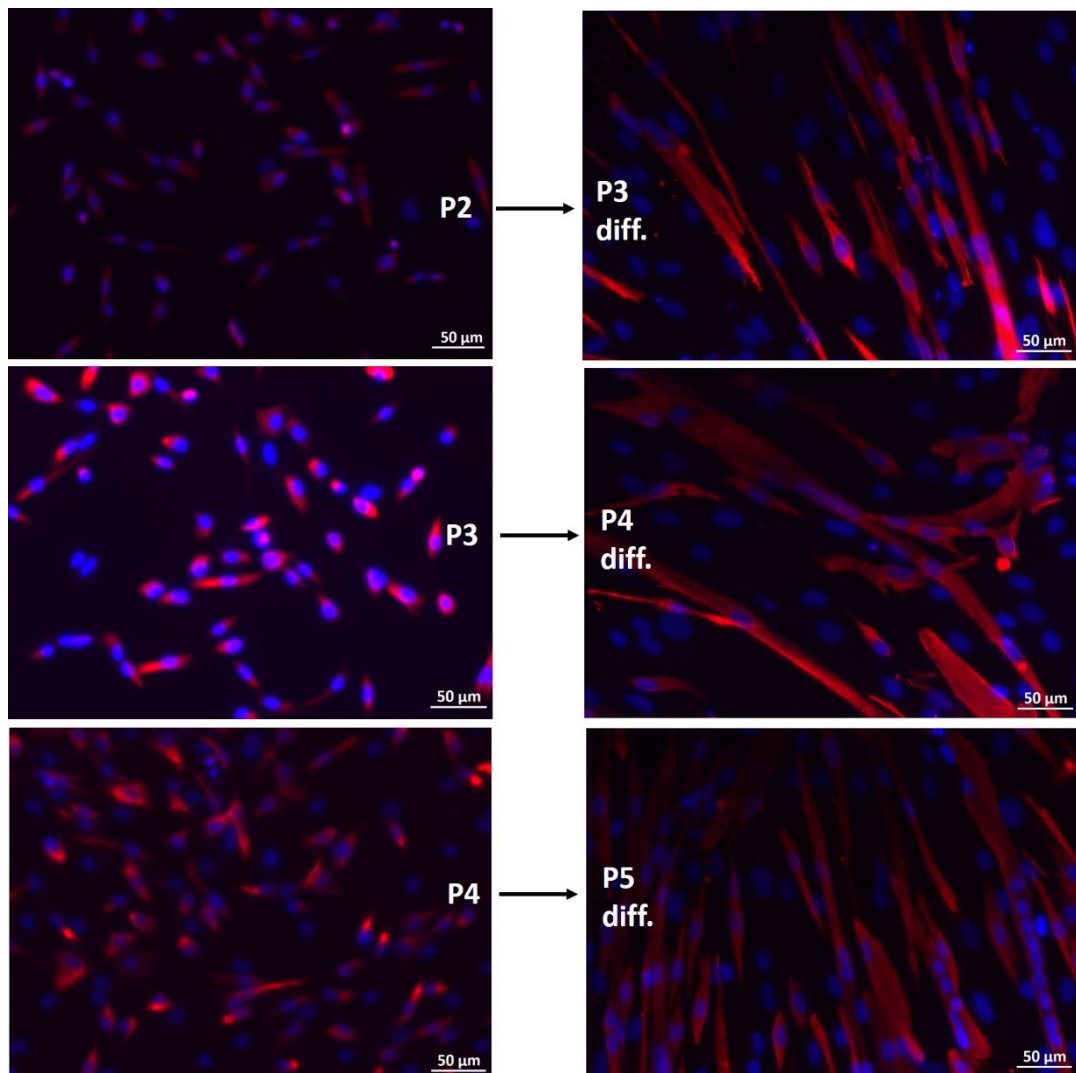


Figure S1: Desmin staining of Mb of PP3 in P2-4 (left panel). Mb of the corresponding passage were seeded and myogenically differentiated for 7 days (right panel). After seeding, Mb were referred to as one passage higher than the original passage.

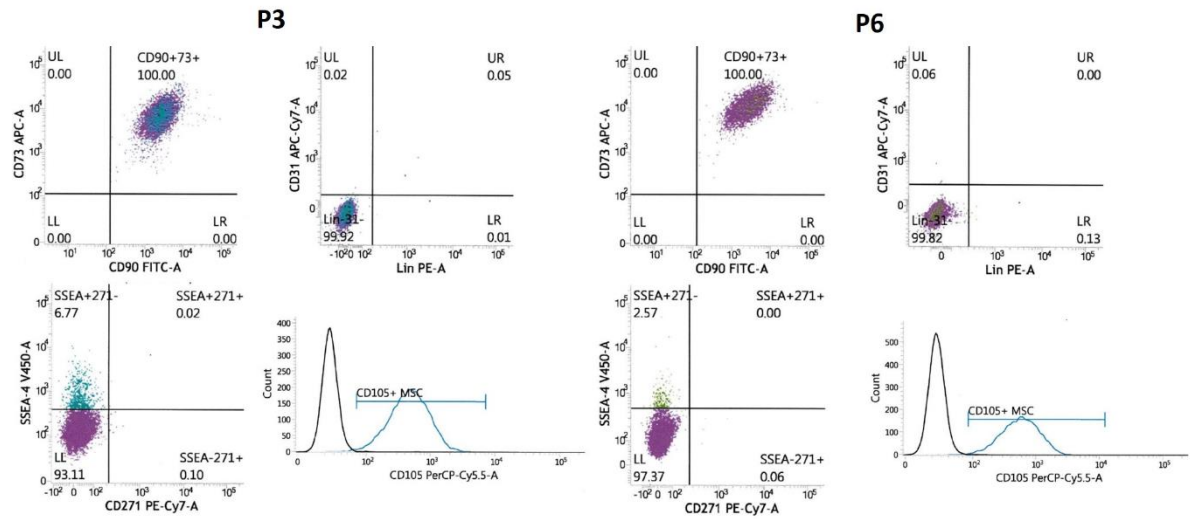


Figure S2: FACS analysis of ADSC in P3 (left) and in P6 (right). ADSC surface markers (CD90, CD73, CD105), negative markers (Lin = CD34, CD11b, CD19, CD45, HLA-DR; CD31; CD271), and SSEA-4 (stage-specific embryonic antigen-4) were determined.