

## Supplementary Materials of:

# Proteomics approach unravels early changes in Human Fibroblasts-Pancreatic Ductal Adenocarcinoma cells crosstalk

Verena Damiani <sup>1,2</sup>, Maria C. Cufaro <sup>2,3</sup>, Maurine Fucito <sup>1,2</sup>, Beatrice Dufrusine <sup>1,2</sup>, Claudia Rossi <sup>1,4</sup>, Piero Del Boccio <sup>2,3</sup>, Luca Federici <sup>1,2</sup>, Maria C. Turco <sup>5,6</sup>, Michele Sallesse <sup>1,2</sup>, Damiana Pieragostino <sup>1,2,\*</sup> and Vincenzo De Laurenzi <sup>1,2</sup>

<sup>1</sup> Department of Innovative Technologies in Medicine and Dentistry, University "G. d'Annunzio" of Chieti- Pescara, Italy; [verena.damiani@unich.it](mailto:verena.damiani@unich.it) (V.D.); [maurine.fucito@unich.it](mailto:maurine.fucito@unich.it) (M.F.); [beatrice.dufrusine@unich.it](mailto:beatrice.dufrusine@unich.it) (B.D.); [luca.federici@unich.it](mailto:luca.federici@unich.it) (L.F.); [michele.sallesse@unich.it](mailto:michele.sallesse@unich.it) (M.S.); [damiana.pieragostino@unich.it](mailto:damiana.pieragostino@unich.it) (D.P.); [de Laurenzi@unich.it](mailto:de Laurenzi@unich.it) (V.D.L.)

<sup>2</sup> Center for Advanced Studies and Technology (CAST), University "G. d'Annunzio" of Chieti-Pescara, Italy

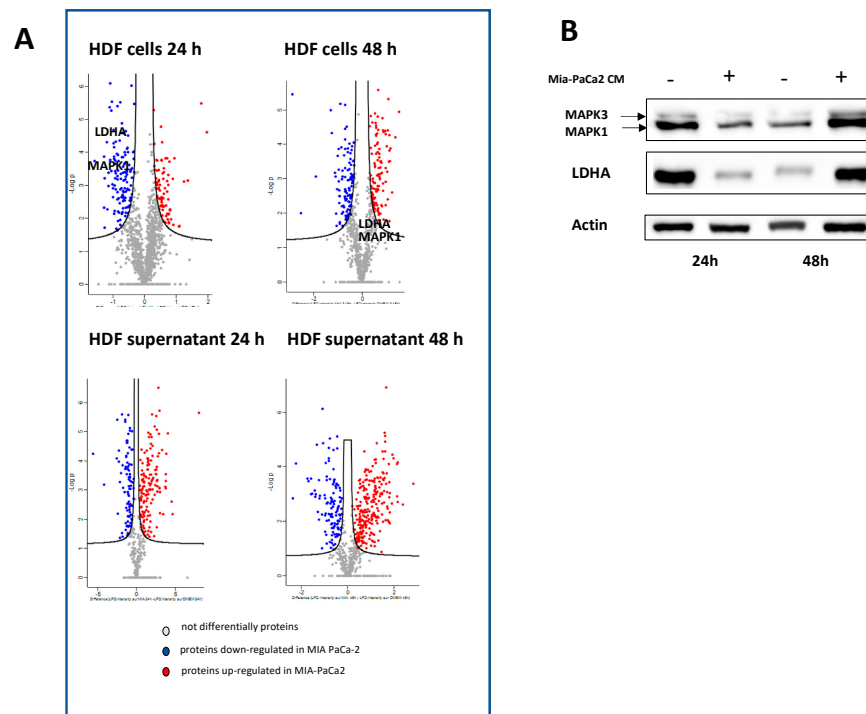
<sup>3</sup> Department of Pharmacy, University "G. d'Annunzio" of Chieti-Pescara, Chieti, Italy; [maria.cufaro@unich.it](mailto:maria.cufaro@unich.it) (M.C.C.); [piero.delboccio@unich.it](mailto:piero.delboccio@unich.it) (P.D.B.)

<sup>4</sup> Department of Psychological, Health and Territory Sciences, School of Medicine and Health Sciences, "G. d'Annunzio" University of Chieti-Pescara, 66100 Chieti, Italy; [claudia.rossi@unich.it](mailto:claudia.rossi@unich.it) (C.R.)

<sup>5</sup> Department of Medicine, Surgery and Dentistry Schola Medica Salernitana, University of Salerno, Baronissi, Italy; [mcturco@unisa.it](mailto:mcturco@unisa.it) (M.C.T.)

<sup>6</sup> R&D Division, BIOUNIVERSA s.r.l., Baronissi, Italy

\* Correspondence: [damiana.pieragostino@unich.it](mailto:damiana.pieragostino@unich.it); Tel: +39 0871541593



**Supplementary Figure S1. Validation of MS/MS data.** (A) Volcano plots of DE proteins identified by MS/MS analysis in lysate and supernatant of HDF cells treated for 24 and 48 hours with MIA-PaCa2 CM. Downregulated (24 hours) and upregulated (48 hours) MAPK1/3 and LDHA are indicated. (B) Western blot analysis of MAPK1/3 and LDHA in cell lysates of HDF cells treated with MIA-PaCa2 CM.