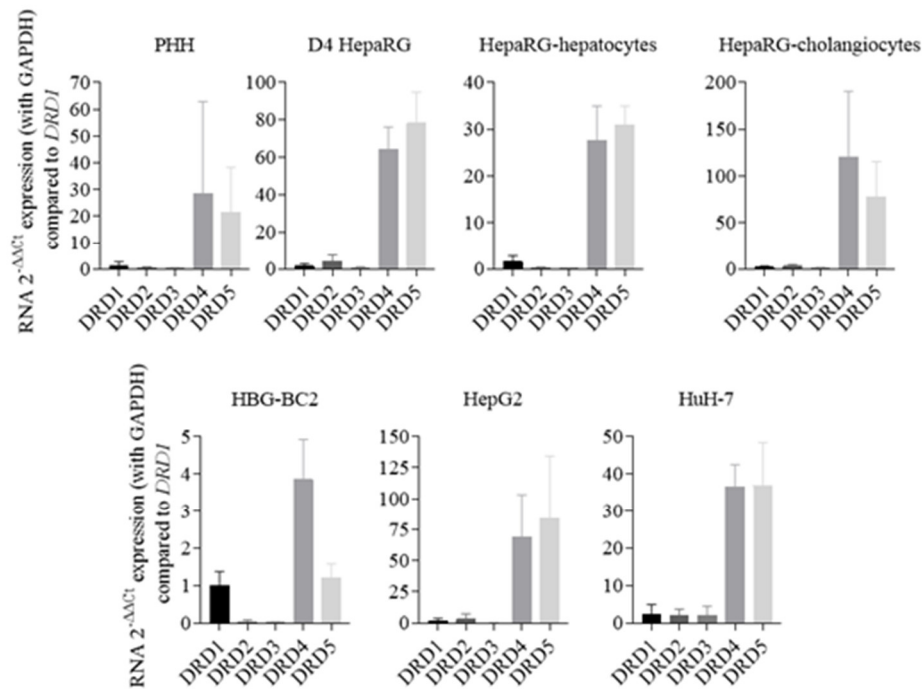


## Supplementary Materials:

**Supplementary Table S1.** Primer sequences used for qPCR.

	Primer sequences (F: Forward / R: Reverse)
<i>DRD1</i>	F: AGGGACTTCTCTGTTCGTATCC R: GGAACCTGATAACGGCAGCA
<i>DRD2</i>	F: CTCTTCGGACTCAATAACGCAG R: GACGATGGAGGAGTAGACCAC
<i>DRD3</i>	F: AGAAGGCAACCCAAATGGTGG R: TGTCGTGGCACTGTAAAGCTC
<i>DRD4</i>	F: CCACCAACTCCTTCATCGTG R: TCGGAGTAGACGAAGAGCG
<i>DRD5</i>	F: CTCAACTGGCACAGGGAC R: GATGAGCGAGGAAGAGATG
<i>GAPDH</i>	F: TGCACCACCAACTGCTTAGC R: GGCATGGACTGTGGTCATGAG



**Supplementary Figure S1.** Expression of the dopamine receptors mRNAs in primary human hepatocytes in culture (PHH) and in four hepatoma cell lines (HepG2, HepaRG, HuH-7, HBG-BC2). Expression of dopamine receptors (DRD) mRNAs has been analyzed by real-time quantitative polymerase chain reaction (5 ng of cDNA) in progenitors HepaRG cells (4 days of culture), differentiated HepaRG-hepatocytes, HepaRG-cholangiocytes, as well as in HepG2, HuH-7, HBG-BC2 cells, and PHH. mRNAs expressions were measured by the 2<sup>-ΔΔCT</sup> method using GAPDH as the house-keeping gene, and expression values were compared to DRD1 expression. All values are the mean of 3 independent experiments in triplicates, except for cholangiocytes-HepaRG (3 experiments with biological duplicates) and PHH (5 experiments with biological triplicates).