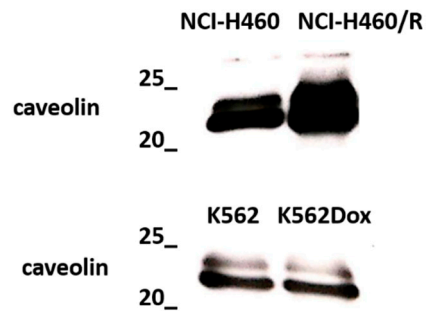
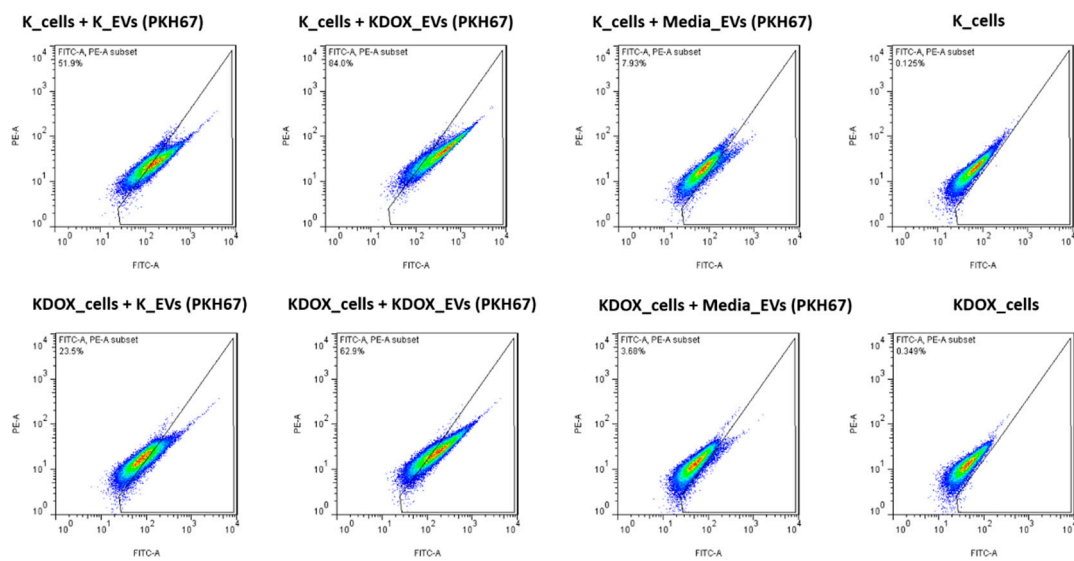


Supplementary Materials:

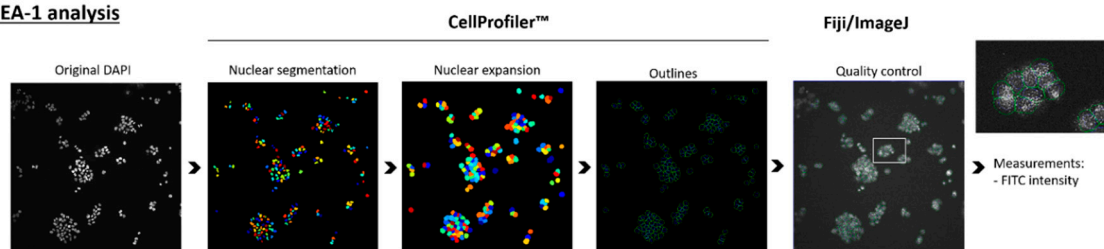


Supplementary Figure S1: Comparison of the levels of caveolin between drug sensitive (NCI-H460 or K562) and MDR (NCI-H460/R or K562Dox) counterpart cells, analysed by Western blot.

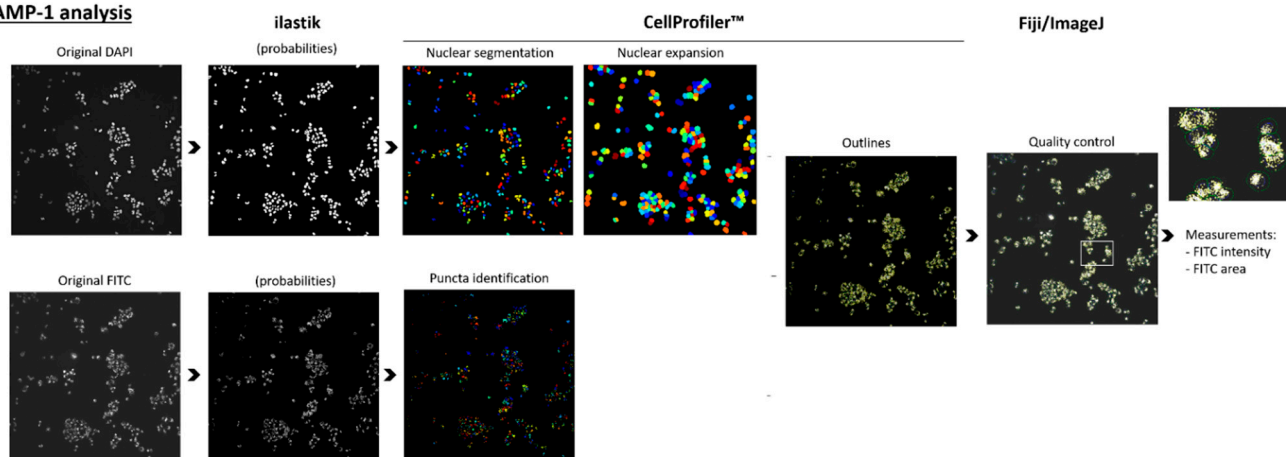


Supplementary Figure S2: Image representative of the FACS analysis.

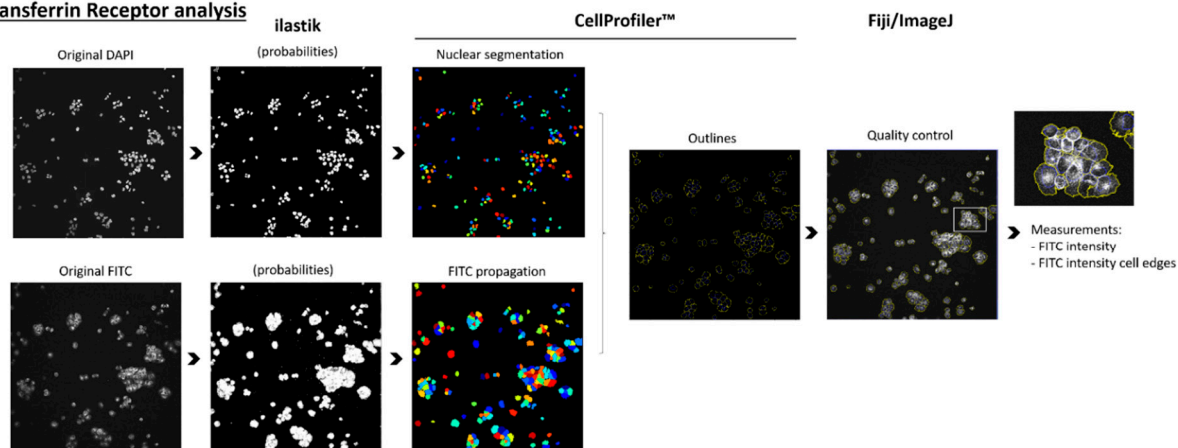
EEA-1 analysis



LAMP-1 analysis



Transferrin Receptor analysis



Supplementary Figure S3: Layout of the image analysis using ilastik and Cell Profiler™ software which allowed image cell segmentation and signal quantification.