

Figure S1. Endogenous GFP expression reveals differential fluorescence in cerebellar cortical and nuclei. **(A)** Confocal tile scan of coronal sections from adult (**A₁**) and P15 (**A₂**) *Slc1a6-EGFP* mice. Inserts of a tile scan image to show the difference between a high (lateral nucleus; indicated by '4') versus low (anterior interposed nucleus; indicated by '2') expression pattern of the sub-nuclei in the CN. **(B)** Six tile scan images in which the individual nuclei are demarcated numerically (as indicated by the definitions below the figure), guided by the Paxinos and Franklin anatomical atlas [28] and the previously published ZebrinII pattern in the CN [20].

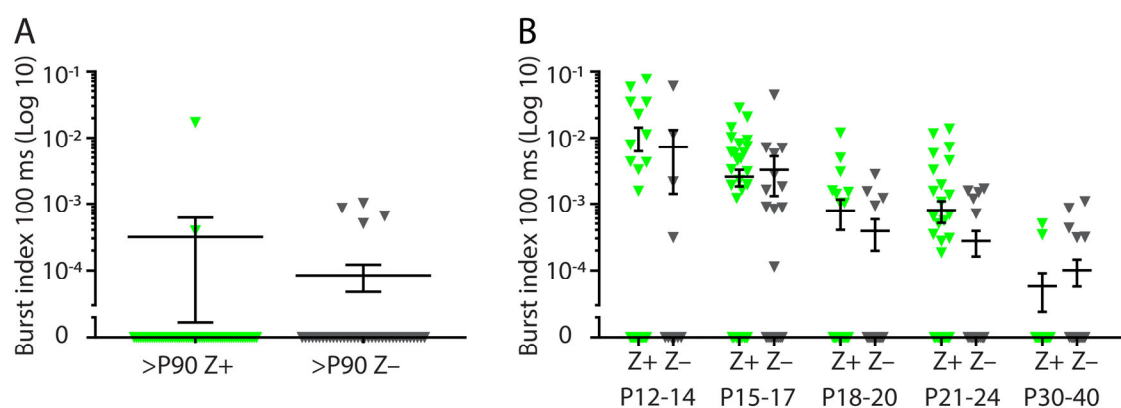


Figure S2. CN burst firing in Z+ and Z- neurons *in vivo*. **(A)** Quantification of 'burst index 100 ms', i.e., the fraction of spikes fired in bursts as defined by ≥ 3 spikes at ≥ 100 Hz followed by a pause of ≥ 100 ms. **(B)** Burst index 100 ms for postnatal stages. See Supplementary Table 1 for all statistical data. Data are represented as mean \pm SEM.