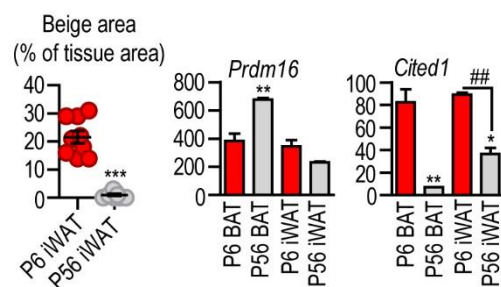


Figure S1. Workflow of the NGS analysis (Left), and correlation heatmap of the samples analyzed (Right)

S2**Figure S2. Area of beige adipocyte-rich regions in the iWAT at P6 and P56**

Beige adipocyte-rich area was calculated with BeAR© image analysis, using H&E stained sections, as described (Yu et al 2019). ***p<0.001, Student's unpaired, two-tailed t-test
 Relative expression of *Prdm16* and *Cited1*. **p<0.01, *p<0.05, one-way ANOVA with Dunnett's post hoc test; ## p<0.01 Student's unpaired, two-tailed t-test

Figure S3. Interactive maps of gene networks

Step 1: Download the raw files, or open the interactive gene network files, [using this link](#).

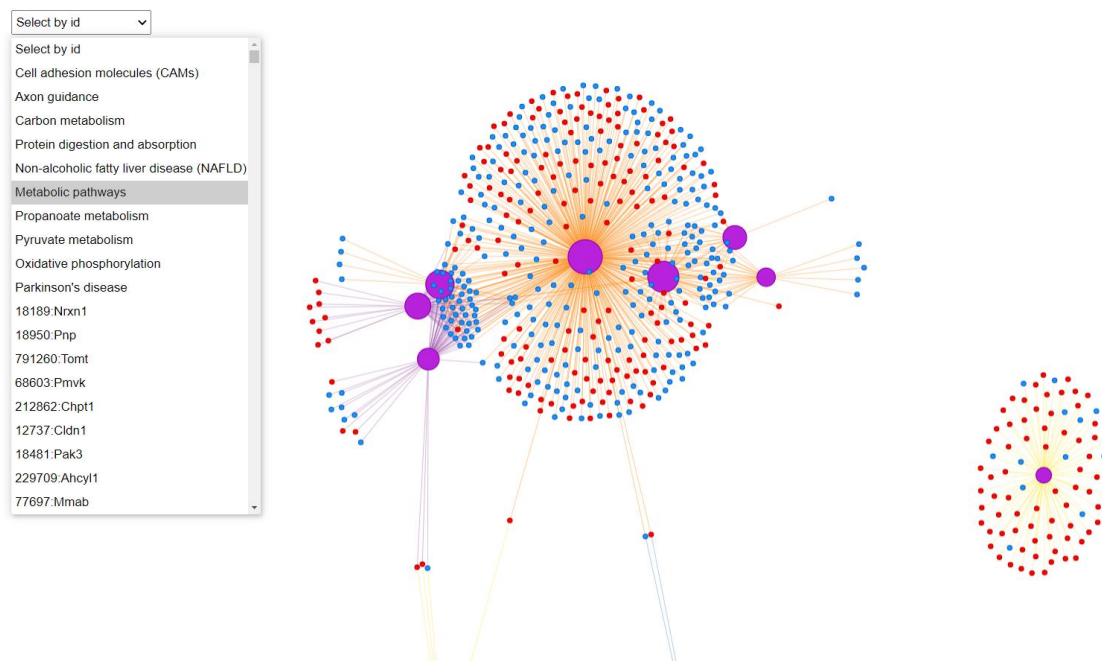
Step 2. Save the files in the following order of library structure:

| | | | | | |
|----------------------------|-----|----------------|----|----------------------|----------|
| > GONetwork | ✓ ☆ | 22.7.21, 21:45 | -- | Dateiordner | -- |
| > html_files | ✓ ☆ | 22.7.21, 21:44 | -- | Dateiordner | -- |
| > KeggNetwork | ✓ ☆ | 22.7.21, 21:45 | -- | Dateiordner | -- |
| adult_BAT-VS-infant_BAT... | ✓ ☆ | 24.5.19, 06:45 | -- | Microsoft Edge HT... | 189,4 KB |
| adult_WAT-VS-adult_BAT... | ✓ ☆ | 24.5.19, 06:45 | -- | Microsoft Edge HT... | 204,6 KB |
| adult_WAT-VS-infant_BAT... | ✓ ☆ | 24.5.19, 06:44 | -- | Microsoft Edge HT... | 184,9 KB |
| adult_WAT-VS-infant_WAT... | ✓ ☆ | 24.5.19, 06:44 | -- | Microsoft Edge HT... | 148,9 KB |
| adult_WAT-VS-infant_WAT... | ✓ ☆ | 24.5.19, 06:45 | -- | Microsoft Edge HT... | 153,8 KB |
| infant_WAT-VS-infant_BA... | ✓ ☆ | 24.5.19, 06:45 | -- | Microsoft Edge HT... | 170,9 KB |

Step 3. Open the interactive map, select the desired GO or cellular process, and the gene or gene network of interest. Examples of network analyses are shown below.

Example 1

Metabolic pathways and their interconnections, with individual gene names



Example 2

KEGG pathway networks



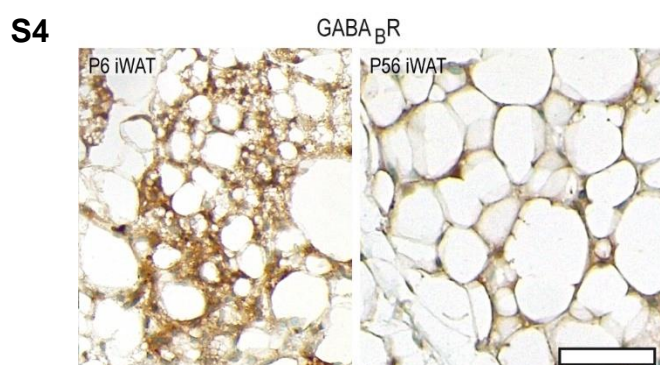


Figure S4. Immunostaining of GABA_BR in P6 and P56 iWAT, scale 50 μ m.

Reference

Yu H, Dilbaz S, Coßmann J, Hoang AC, Diedrich V, et al. 2019. Breast milk alkylglycerols sustain beige adipocytes through adipose tissue macrophages. *The Journal of Clinical Investigation* 129: 2485-99