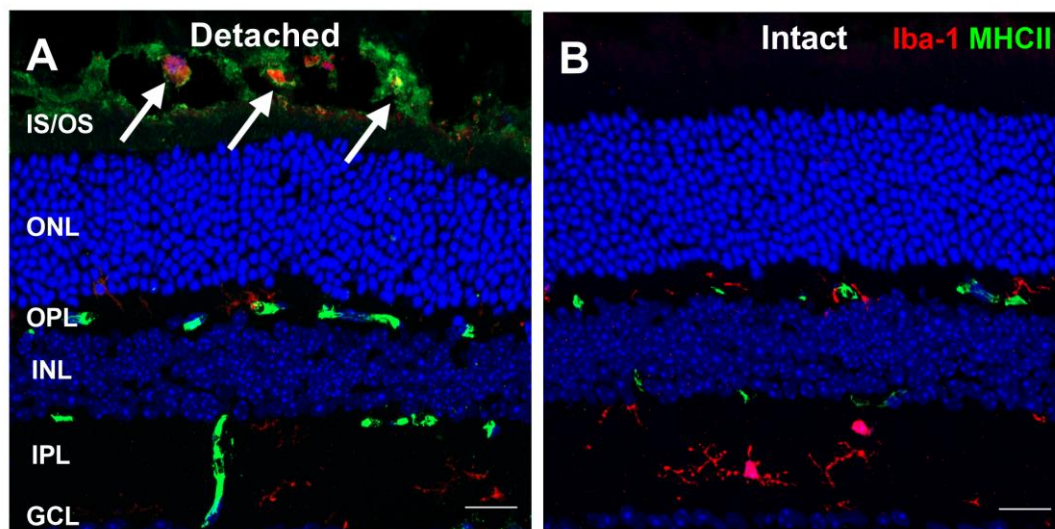


Supplementary Figure



**Supplementary Figure S1.** MHC-II expression in a mouse RD model. (A,B) Confocal micrographs of a vertical cryosection of the retina at 5 days after RD in detached (A) and intact (B) regions. Subretinal microglial cells (arrows) in detached retina expressed MHC-II in the detached region (A), but not in the intact region (B). Scale bars, 20  $\mu$ m.