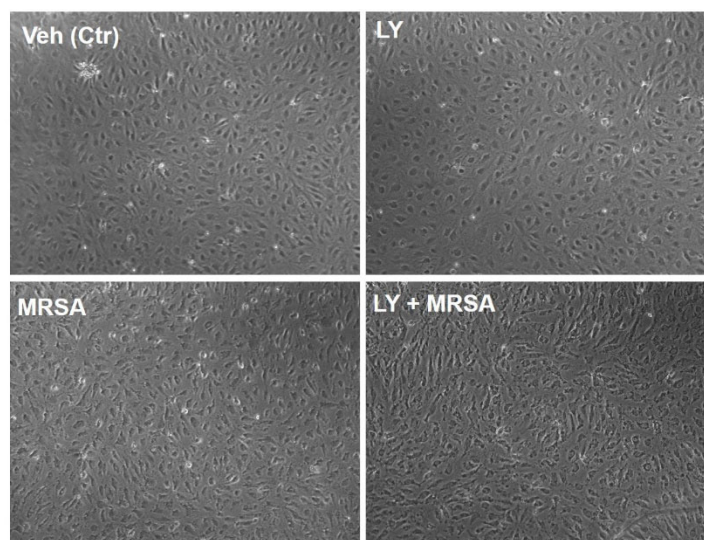
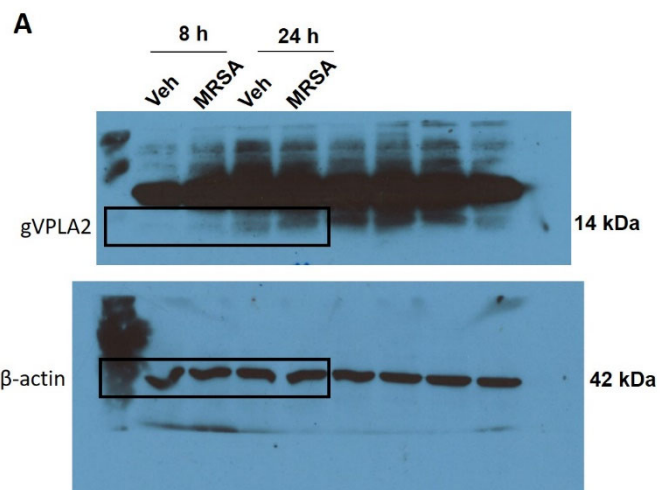


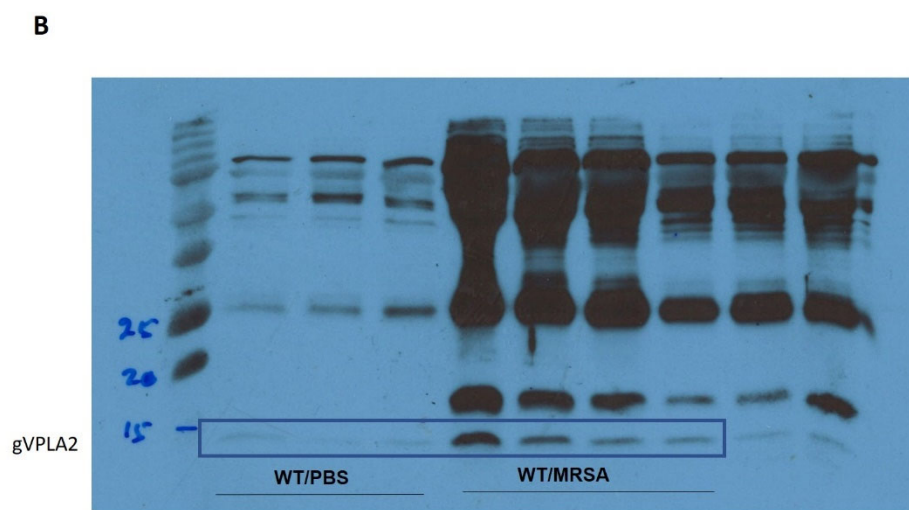
Supplementary Figure S1. sPLA₂ inhibitor, LY311727, attenuates HK-MRSA-induced lung endothelial barrier disruption. HPAEC were pre-treated with LY311727 (100 μ M, 1 hour) and challenged with HK-MRSA (2x 10⁸ CFU/ml). (A): Transendothelial electrical resistance (TER) values were recorded over time. (B): Normalized TER values at the 10-hour time point. *p < 0.05. N=4-17/condition.



Supplementary Figure S2. XPerT Assay: Brightfield images of cell monolayers. HLMVEC monolayers were grown to confluency on biotinylated gelatin coated plates. Cells were pretreated with LY311727 (100 μ M, 1 hour) and then challenged with HK-MRSA (2x 10⁸ CFU/ml) for 8 hours. FITC-avidin was added to media and allowed to permeate cells to reach biotin substrate at site of paracellular gaps. Images were taken using a fluorescence microscope as shown in Figure 3. Depicted are the corresponding brightfield images (10x).



Unedited blots shown in figure 1C



Unedited blot shown in figure 6D

Supplementary Figure S3. Unedited blots for Figure 1C and Figure 6D for shown.