

Figure S1

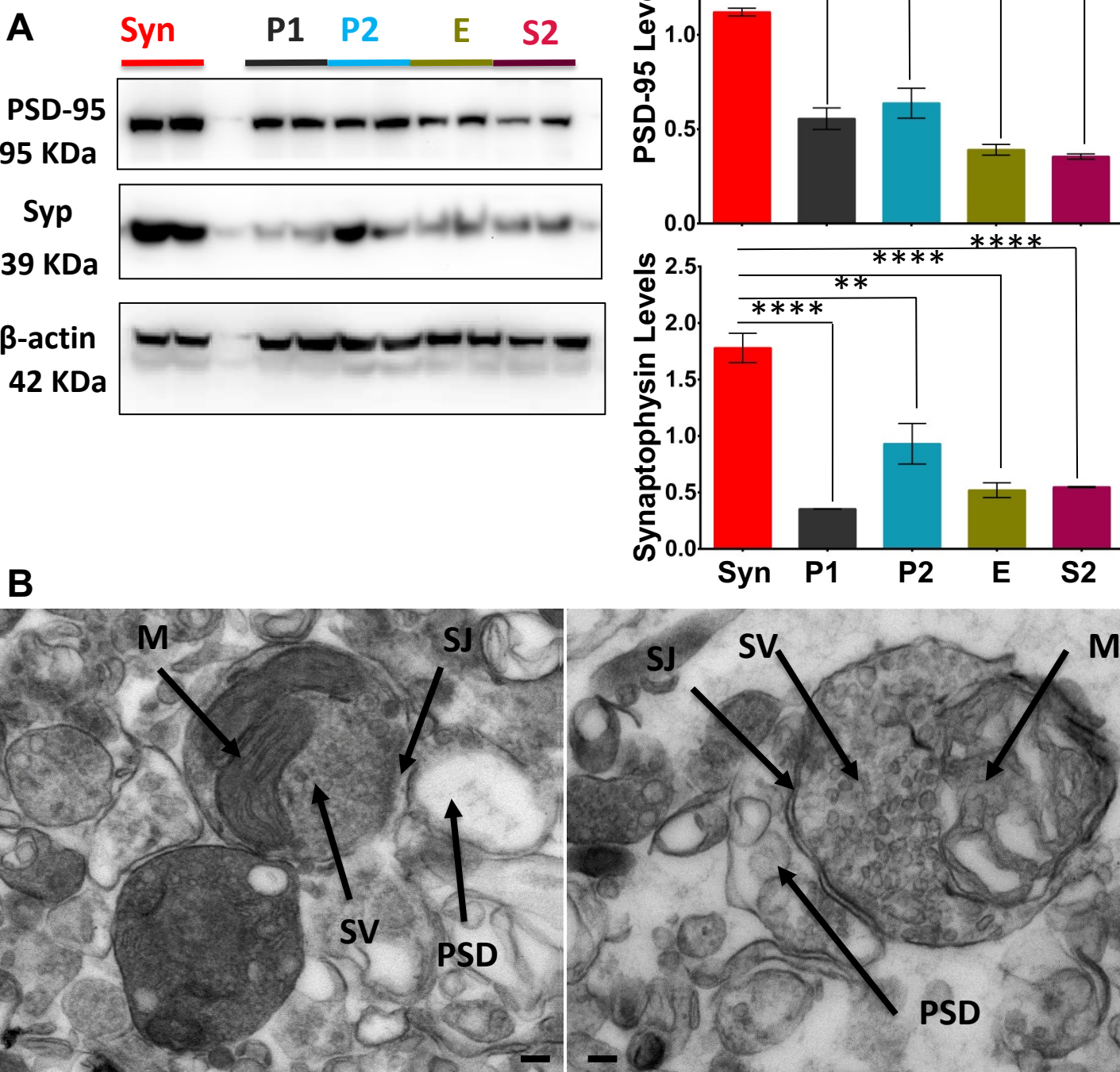


Figure S1. Isolation and characterization of synaptosomes. **A**. Representative Western blots of fractions (P1 - pellet 1, P2 - pellet 2, E - Extrasynaptic fraction and S2 - cytosolic fraction) collected during isolation of synaptosome and the final synaptosome-enriched fraction (Syn) (left), and densitometric analysis of PSD-95 and synaptophysin (Syp) normalized per amounts of β -actin in different fractions. $n=3$ independent isolations from individual animals, each analyzed in triplicate. Data are expressed as mean \pm SEM, $n=3$ independent synaptosomes preparations isolated from individual control animals, ** $p < 0.01$, *** $p < 0.001$, **** $p < 0.0001$ by one-way ANOVA followed by Tukey's test. **B**. Imaging of synaptosome preparations isolated from control animals by TEM. PSD, postsynaptic density; SJ, synaptic junction; SV, synaptic vesicles and M, mitochondria. Scale bar = 0.1 μ m.

Figure S2

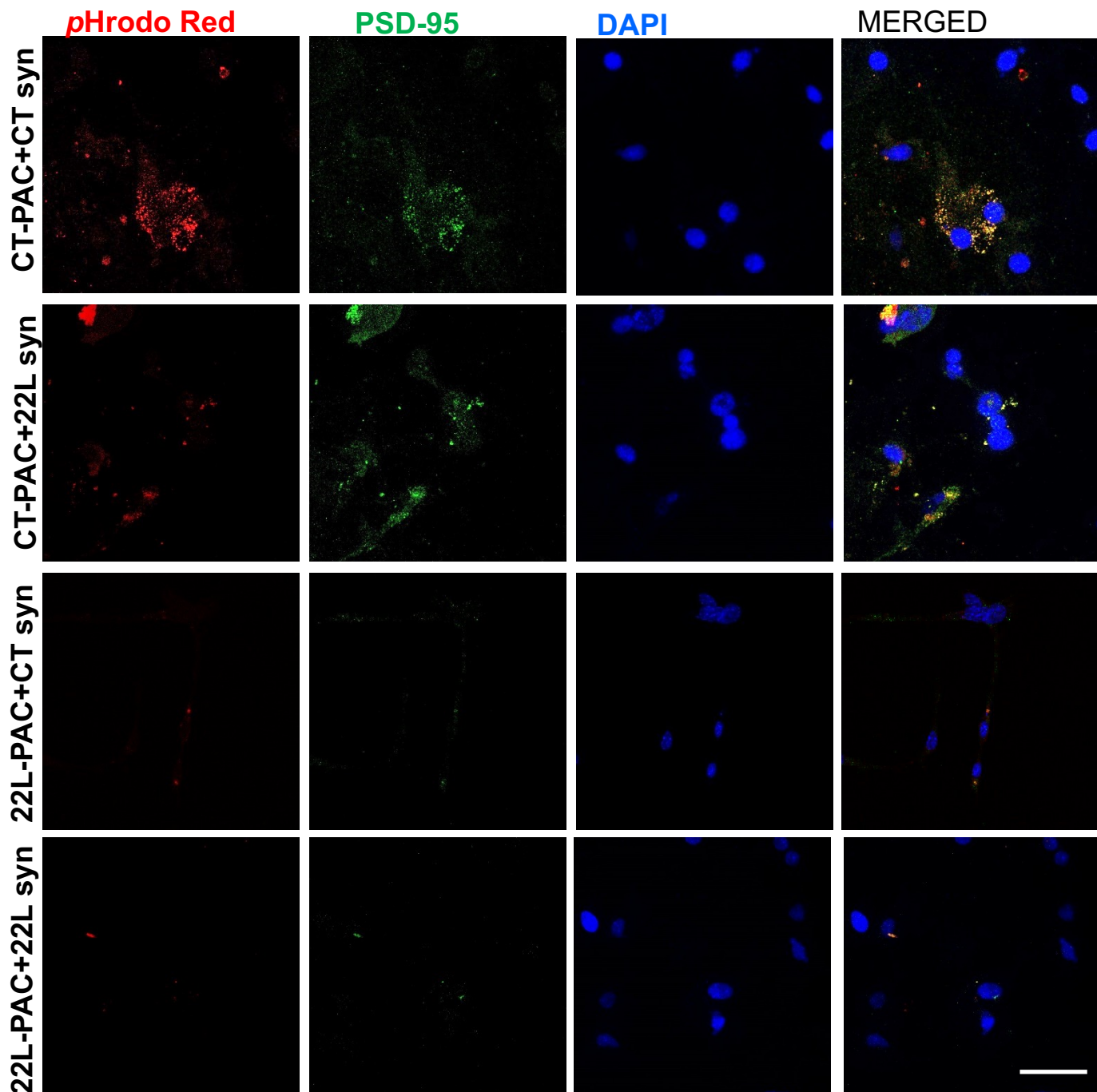


Figure S2: Confocal microscopy imaging of CT-PAC and 22L-PAC incubated with pHrodo Red-conjugated CT-syn or 22L-syn for 24 hours and stained for PSD-95 (green). Cell nuclei are stained with DAPI (blue). Scale bar = 25 μ m.