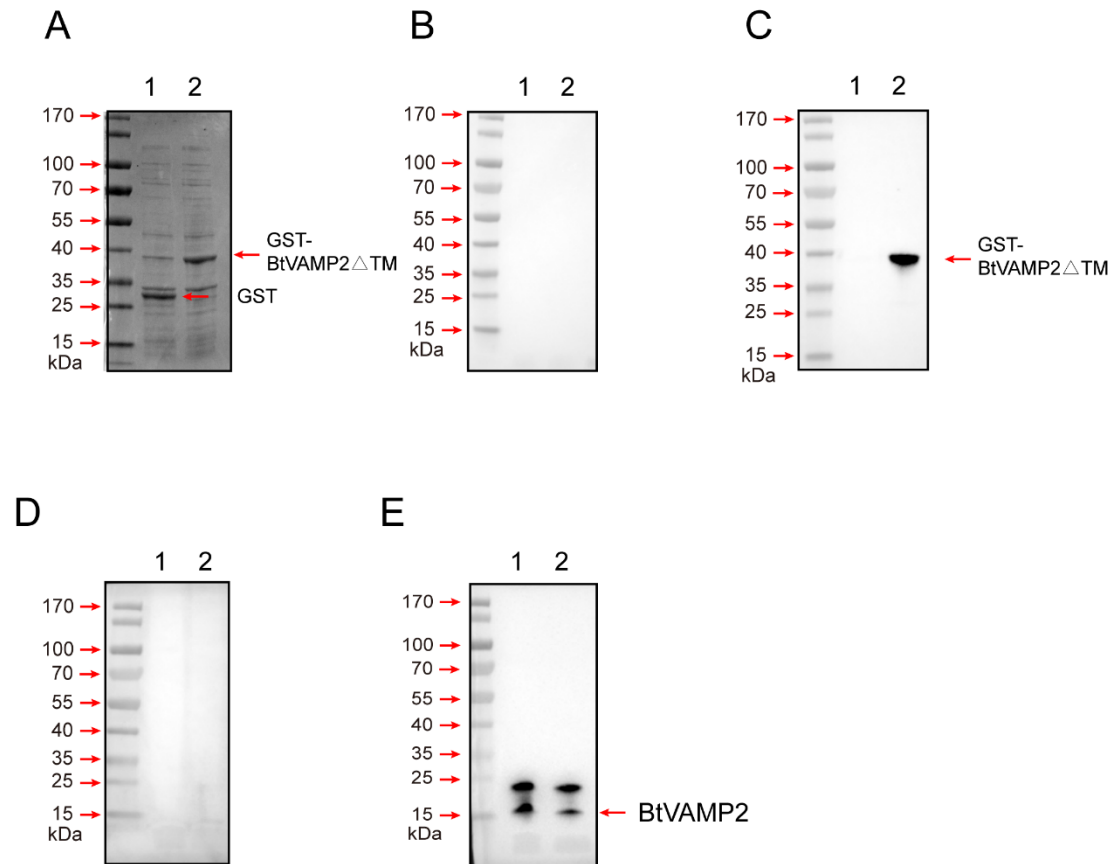
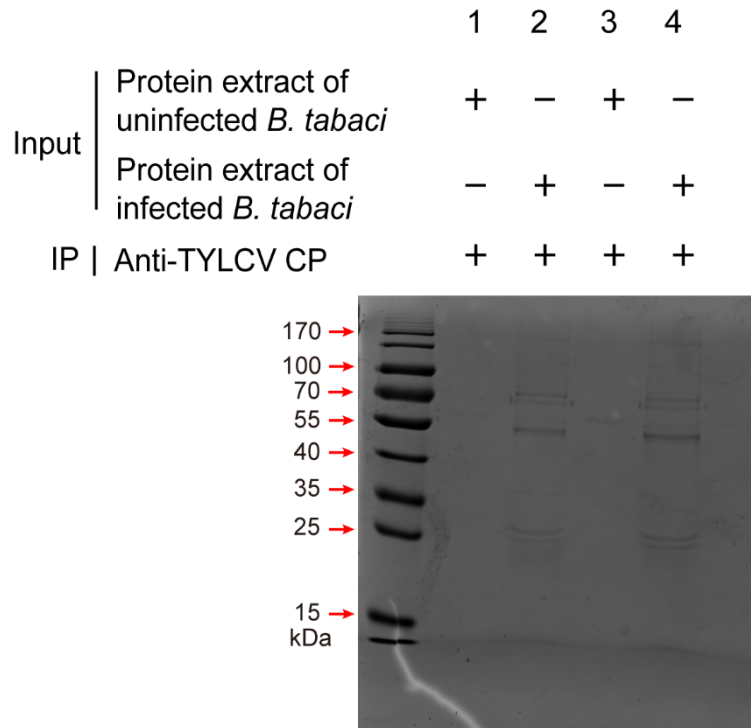


## Supplementary Materials



**Figure S1.** Analysis of anti-BtVAMP2 antibody. (A) Coomassie blue staining analysis of *Escherichia coli* (BL21) total proteins that expressed with GST protein (1) or with GST- BtVAMP2  $\Delta$ TM protein (2). The transmembrane domain of BtVAMP2 was removed for easier prokaryotic expressing. GST  $\approx$  26 kDa, GST- BtVAMP2  $\Delta$ TM  $\approx$  36 kDa. (B) *E. coli* (BL21) total proteins that expressed with GST protein (1) or with GST- BtVAMP2  $\Delta$ TM protein (2) were detected using rabbit pre-immune serum. (C) *E. coli* (BL21) total proteins that expressed with GST protein (1) or with GST- BtVAMP2  $\Delta$ TM protein (2) were detected using anti-BtVAMP2 rabbit pAb. (D) The proteins of MEAM1 whitefly (1) or Asia II 1 whitefly (2) were detected using rabbit pre-immune serum. (E) The proteins of MEAM1 whitefly (1) or Asia II 1 whitefly (2) were detected using anti-BtVAMP2 rabbit pAb.



**Figure S2.** The candidate proteins of MEAM1 whitefly that bind to TYLCV CP by Co-IP analysis via Coomassie blue staining.

MEAM1 VAMP2	MAAPDSGANLSTGEDGIVGGPRTFPQQIAAQKRLQQTQAQV	40
Asia II 1 VAMP2	MAAPDSGANLSTGEDGIVGGPRTFPQQIAAQKRLQQTQAQV	40
MEAM1 VAMP2	DEVVDIMKTNVEKVLERDQKLSELDDRADALQQGASQFEQ	80
Asia II 1 VAMP2	DEVVDIMKTNVEKVLERDQKLSELDDRADALQQGASQFEQ	80
MEAM1 VAMP2	QAGKLKRKFWLQNLKMMIIMGLIGLAILAVVVNKFMPDKQ	120
Asia II 1 VAMP2	QAGKLKRKFWLQNLKMMIIMGLIGLAILAVVVNKFMPDKQ	120
MEAM1 VAMP2	AQGQPFVVMYVQGPPFPQAPFPAPGAAAHT	149
Asia II 1 VAMP2	AQGQPFVVMYVQGPPFPQAPFPAPFPQLTP	149

**Figure S3.** Comparison of BtVAMP2 amino acid sequences of MEAM1 and Asia II 1. The alignments were conducted with DNAMAN.