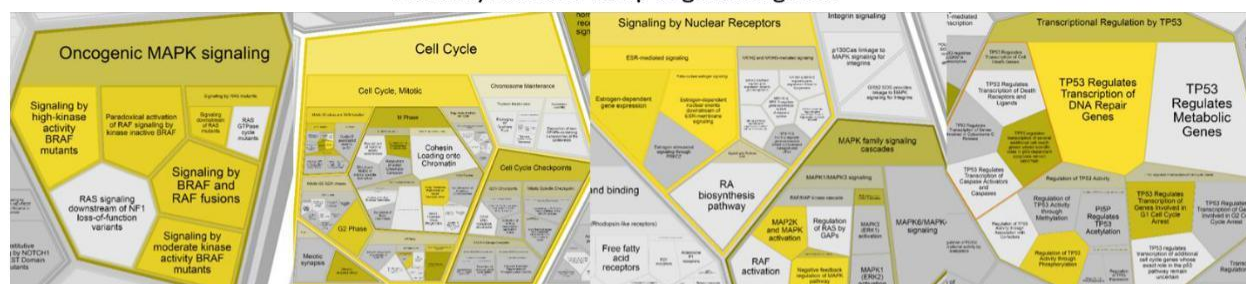
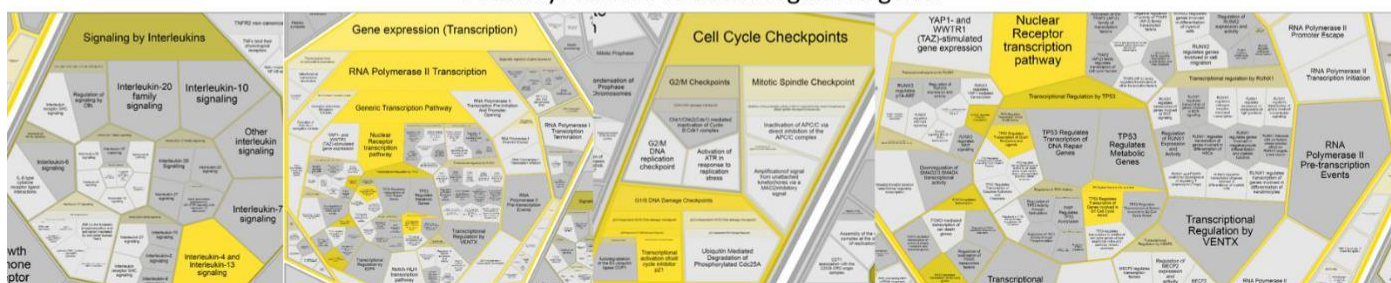


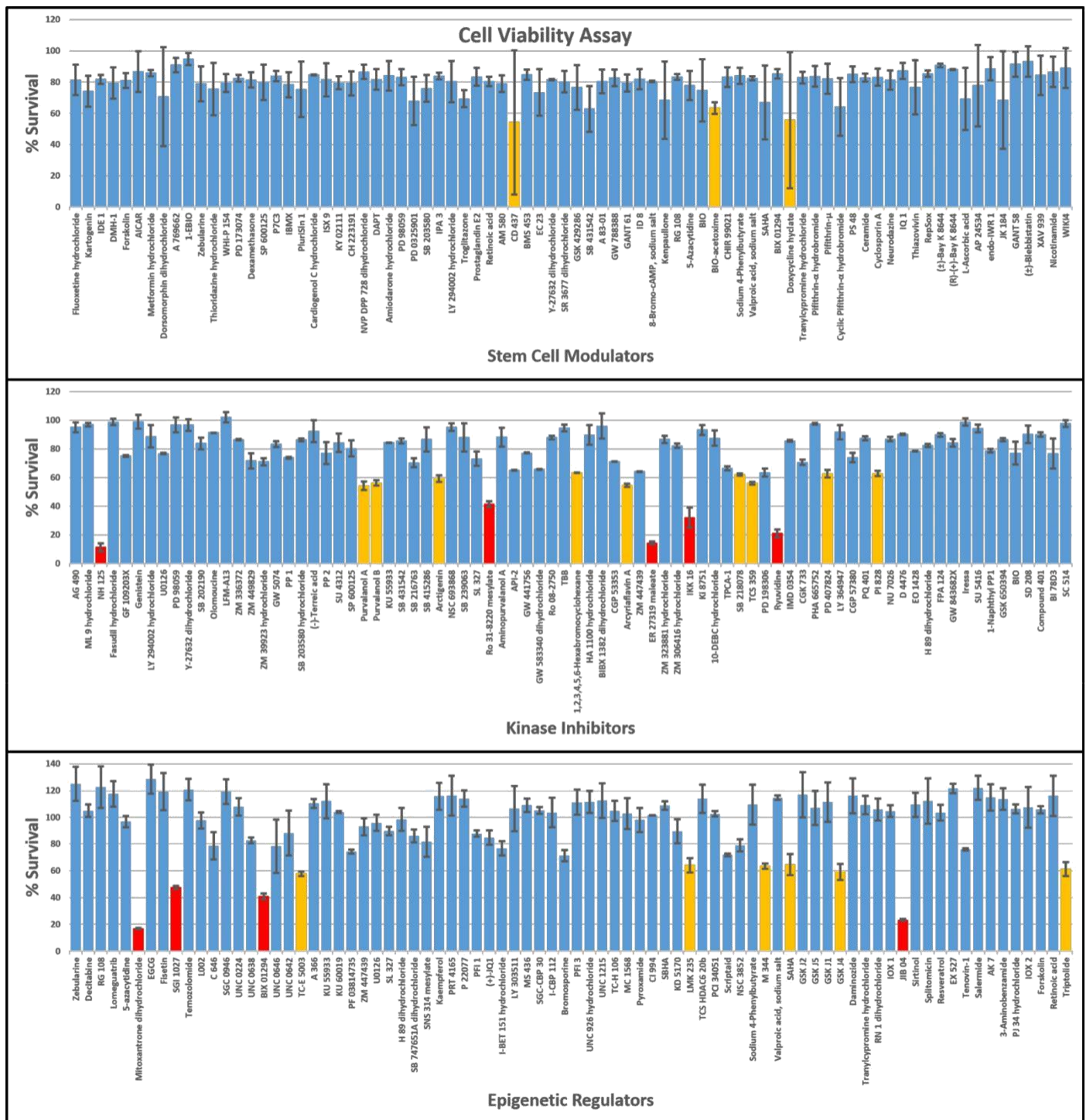
Pathways related to up-regulated genes



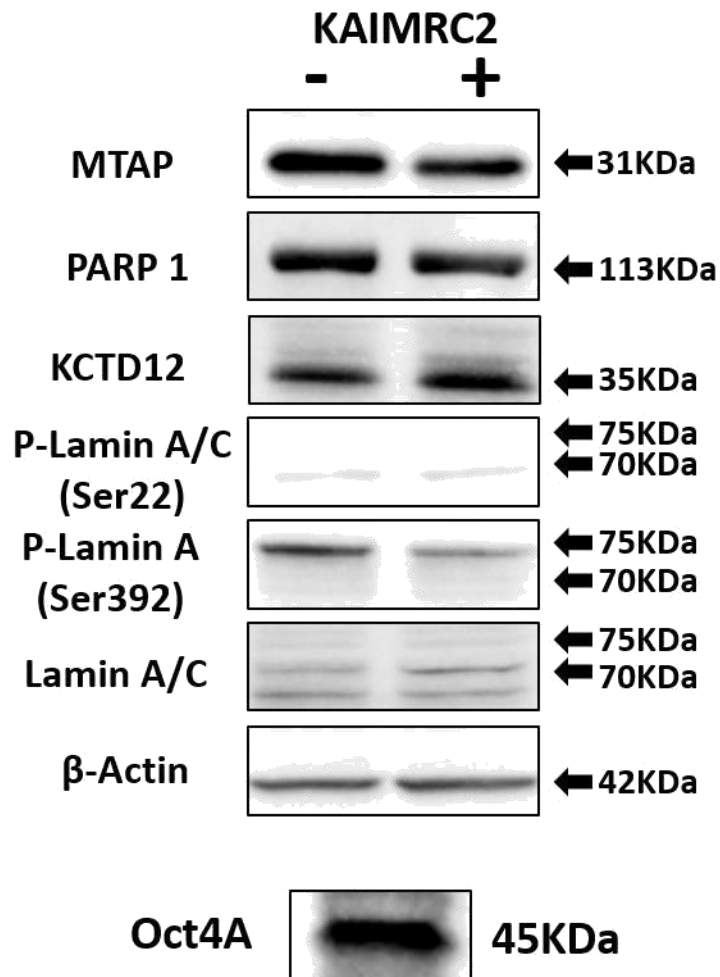
Pathways related to down-regulated genes



Supplementary Figure S1: A web-based pathway analysis software Reactome revealed the pathways related to down and up-regulation of key breast cancer genes in an interactive diagram.

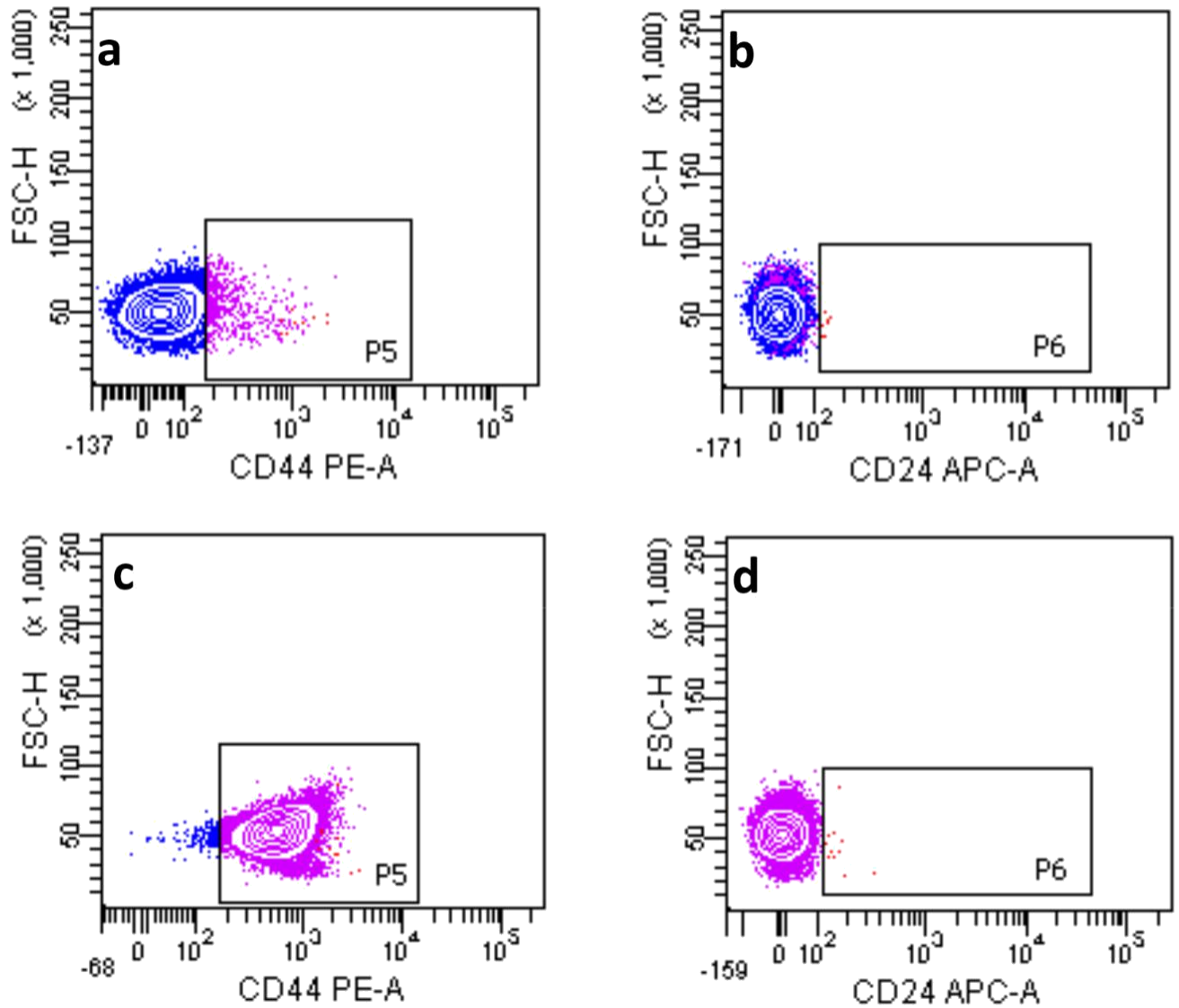


Supplementary Figure S2: This figure shows all the compounds used in this study for screening drug candidates for breast cancer KAIMRC2 cell line.



Supplementary Figure S3: Western blot analysis of a few of the proteins that showed a similar pattern of expression compared to the KAIMRC1 cell line.

Isolation of Breast Cancer Stem Cells



Supplementary Figure S4: Isolation of CD44⁺ Breast Cancer Stem Cell Population. (a, b) Unstained sample.

(c) CD44⁺ population of KAIMRC2 cells after MagCelect Isolation and (d) shows that the cell population is CD24⁻. ×20,000 cells were used for the flow analysis.