

Supporting information

Au Clusters Supported on Defect-Rich Ni-Ti Oxides Derived from Ultrafine Layered Double Hydroxides (LDHs) for CO Oxidation at Ambient Temperature

Ayu Takahashi ¹, Akihiro Nakayama ¹, Toru Murayama ^{1,2}, Norihito Sakaguchi ³, Tetsuya Shimada ¹, Shinsuke Takagi ¹ and Tamao Ishida ^{1,*}

¹ Department of Applied Chemistry for Environment, Graduate School of Urban Environmental Sciences, Tokyo Metropolitan University, 1-1 Minami-osawa, Hachioji, Tokyo 192-0397, Japan; takahashi-ayu@ed.tmu.ac.jp (A.T.); nakayama-akihiro@ed.tmu.ac.jp (A.N.); murayama@tmu.ac.jp (T.M.); shimada-tetsuya@tmu.ac.jp (T.S.); takagi-shinsuke@tmu.ac.jp (S.T.)

² Yantai Key Laboratory of Gold Catalysis and Engineering, Shandong Applied Research Center of Gold Nanotechnology (Au-SDARC), School of Chemistry & Chemical Engineering, Yantai University, 30 Qingquan Road, Yantai 264005, China

³ Laboratory of Integrated Function Materials, Center for Advanced Research of Energy and Materials, Faculty of Engineering, Hokkaido University, Kita13 Nishi8, Kita-ku, Sapporo, Hokkaido 060-8628, Japan; sakaguchi@eng.hokudai.ac.jp

* Correspondence: tamao@tmu.ac.jp; Tel.: +81-42-677-2845

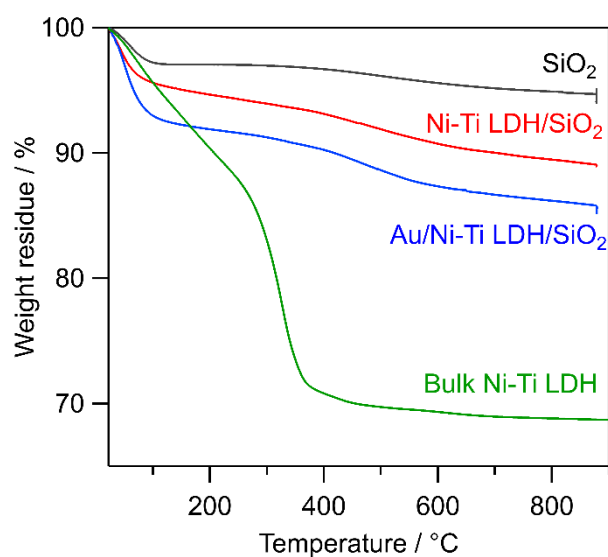


Figure S1. TG diagrams of bulk Ni-Ti LDH, Au/Ni-Ti LDH/SiO₂, Ni-Ti LDH/SiO₂, and SiO₂.

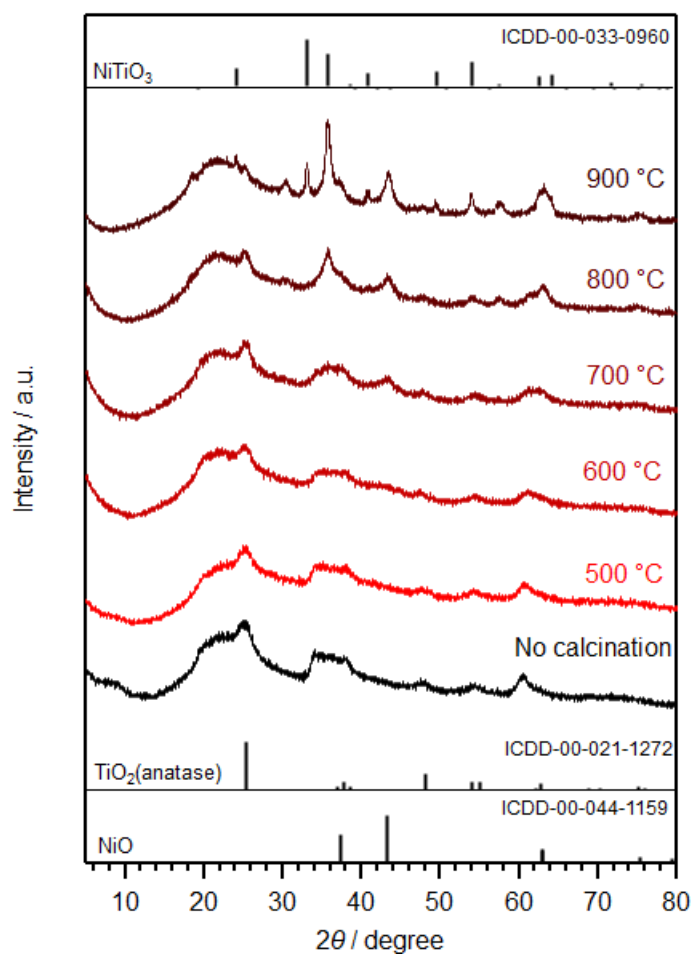


Figure S2. XRD patterns of Ni-Ti LDH/SiO₂ calcined at different temperatures with references, NiO, TiO₂ (anatase), and NiTiO₃.

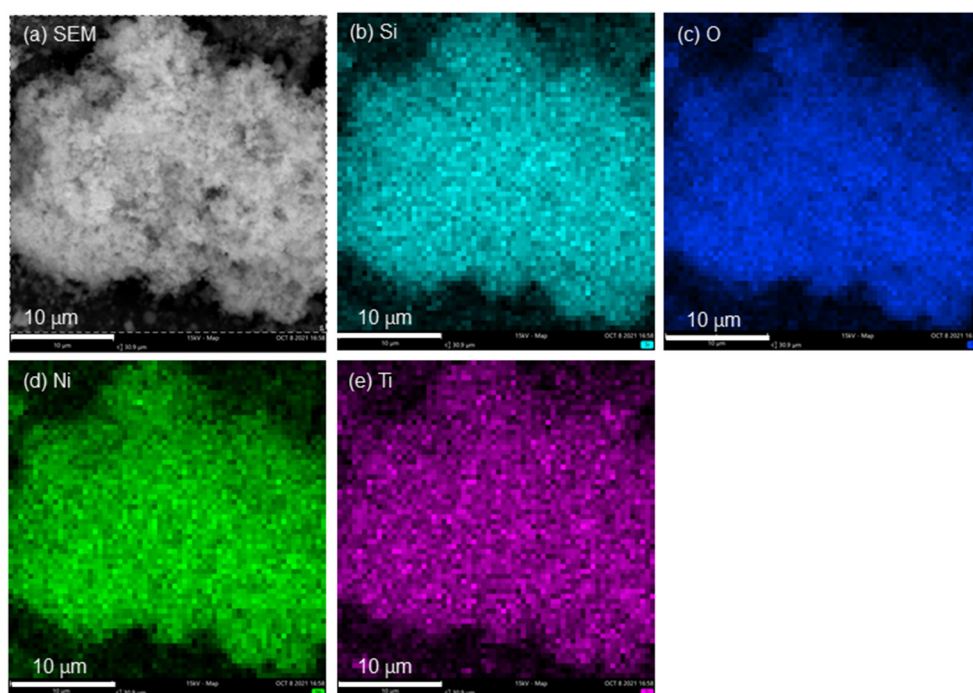


Figure S3. SEM-EDS elemental mappings of Ni-Ti LDH/SiO₂. (a) SEM, (b) Si, (c) O, (d) Ni, and (e) Ti.

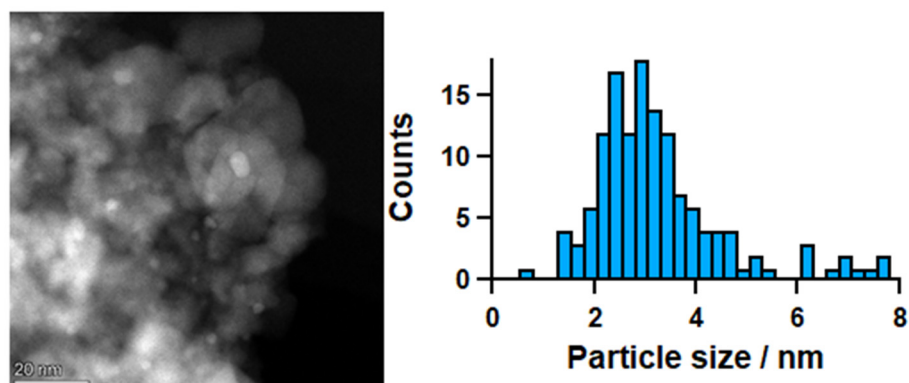


Figure S4. TEM image and size distribution of Au particles of Au/bulk Ni-Ti MMO.

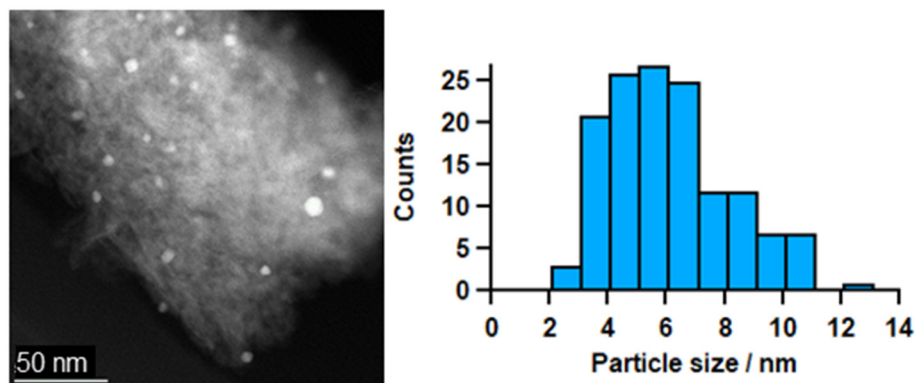


Figure S5. TEM image and size distribution of Au particles of Au/Ni-Ti LDH/SiO₂ (Ni/Ti=2/1).

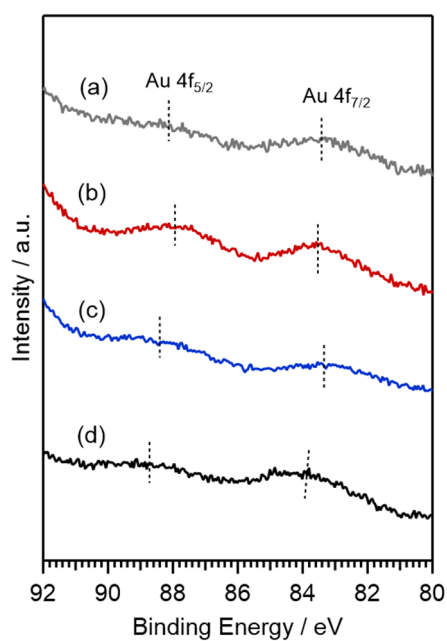


Figure S6. Au 4f XPS spectra of Au/Ni-Ti MMO/SiO₂: (a) LDH-DP, (b) LDH-DPU, (c) MMO-DP, and (d) MMO-DPU.