

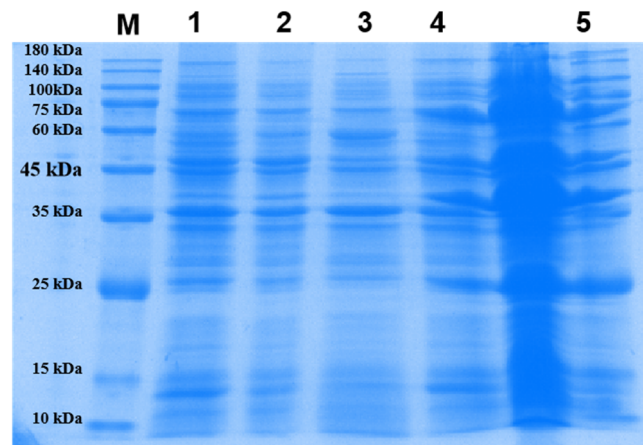
## Supplementary Material

### Enhancing Soluble Expression of Phospholipase B for Efficient Catalytic Synthesis of L-Alpha-Glycerolphosphorylcholine

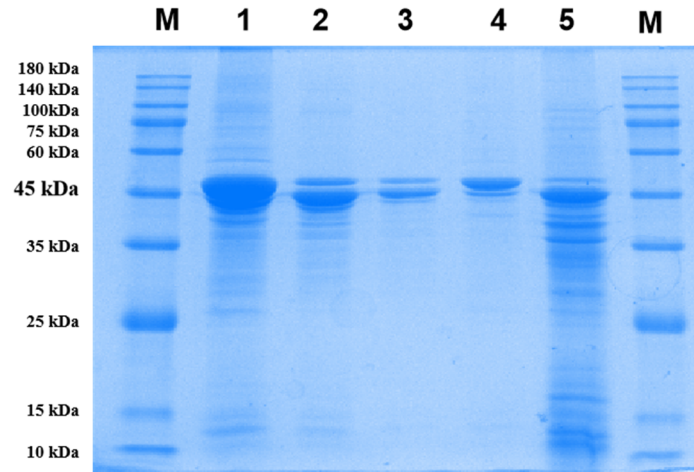
**Table S1.** Protein concentration and the percent of soluble PLB protein.

Molecular chaperones	Free	GroELS	DnaKJE and GroELS	Tf	GroELS and Tf	DnaKJE
Protein concentration (mg/mL)	3.66	5.05	3.98	3.91	4.89	4.61
The % of solubility PLB protein	3.1%	13.0%	10.7%	14.4%	8.6%	16.6%

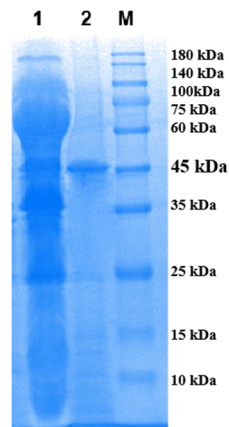
The percent of soluble PLB protein was calculated by dividing the amount of soluble PLB protein by the total amount of protein.



**Figure S1.** SDS-PAGE analysis of the supernatant of recombinant strains containing chaperone plasmids; lane M is protein molecular weight marker. Lane 1 is the supernatant of *E. coli* BL21(DE3)/pET28a-PLB-pGro7. Lane 2 is the supernatant of *E. coli* BL21(DE3)/pET28a-PLB-pG-KJE8. Lane 3 is the supernatant of *E. coli* BL21(DE3)/pET28a-PLB-pTf16. Lane 4 is the supernatant of *E. coli* BL21(DE3)/pET28a-PLB-pG-Tf2. Lane 5 is the supernatant of *E. coli* BL21(DE3)/pET28a-PLB-pKJE7.



**Figure S2.** SDS-PAGE analysis of the precipitation of recombinant strains containing chaperone plasmids; lane M is protein molecular weight marker. Lane 1 is the precipitation of *E. coli* BL21(DE3)/pET28a-PLB-pGro7. Lane 2 is the precipitation of *E. coli* BL21(DE3)/pET28a-PLB-pG-KJE8. Lane 3 is the precipitation of *E. coli* BL21(DE3)/pET28a-PLB-pTf16. Lane 4 is the precipitation of *E. coli* BL21(DE3)/pET28a-PLB-pG-Tf2. Lane 5 is the precipitation of *E. coli* BL21(DE3)/pET28a-PLB-pKJE7.



**Figure S3.** SDS-PAGE analysis of purified PLB; lane M is protein molecular weight marker. Lane 1 and 2 are respectively crude enzyme of *E. coli* BL21(DE3)/pET28a-PLB-pKJE7 and eluted protein.