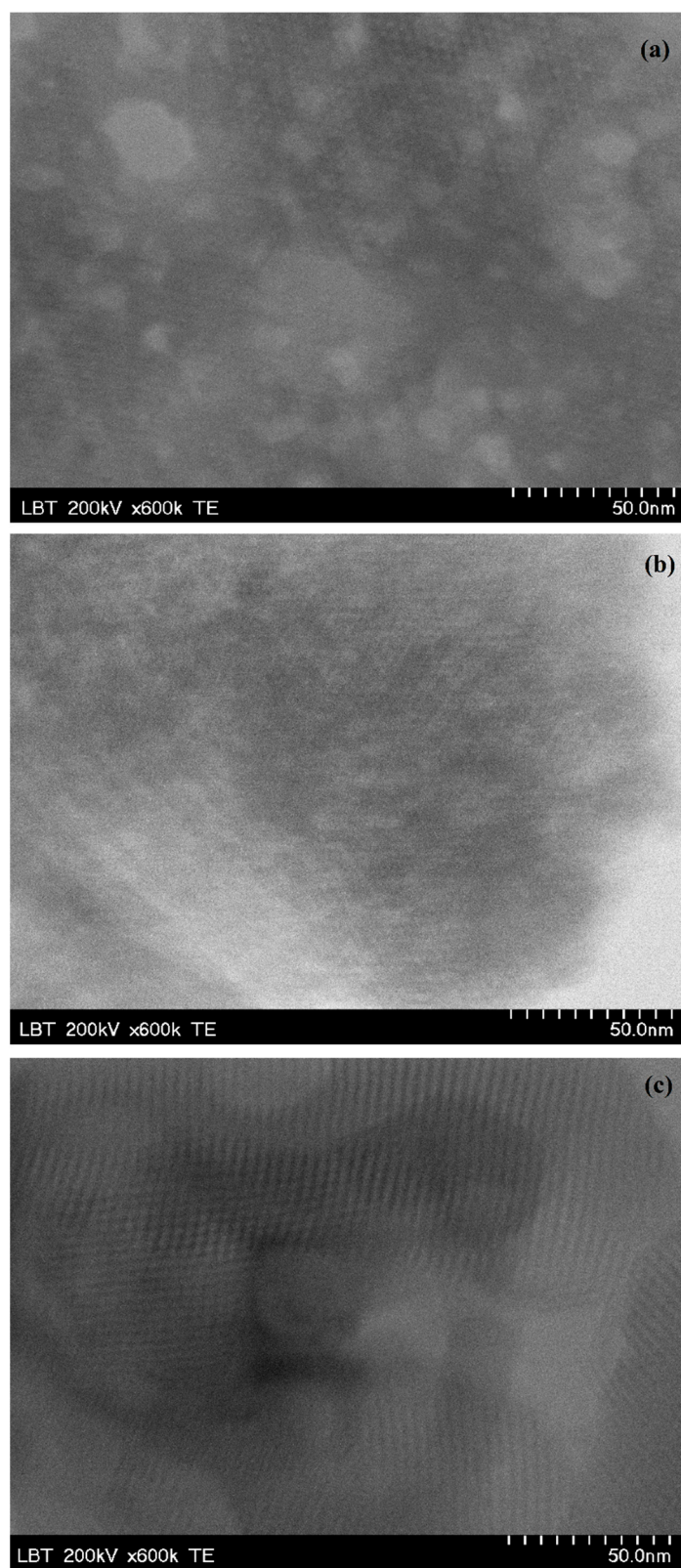


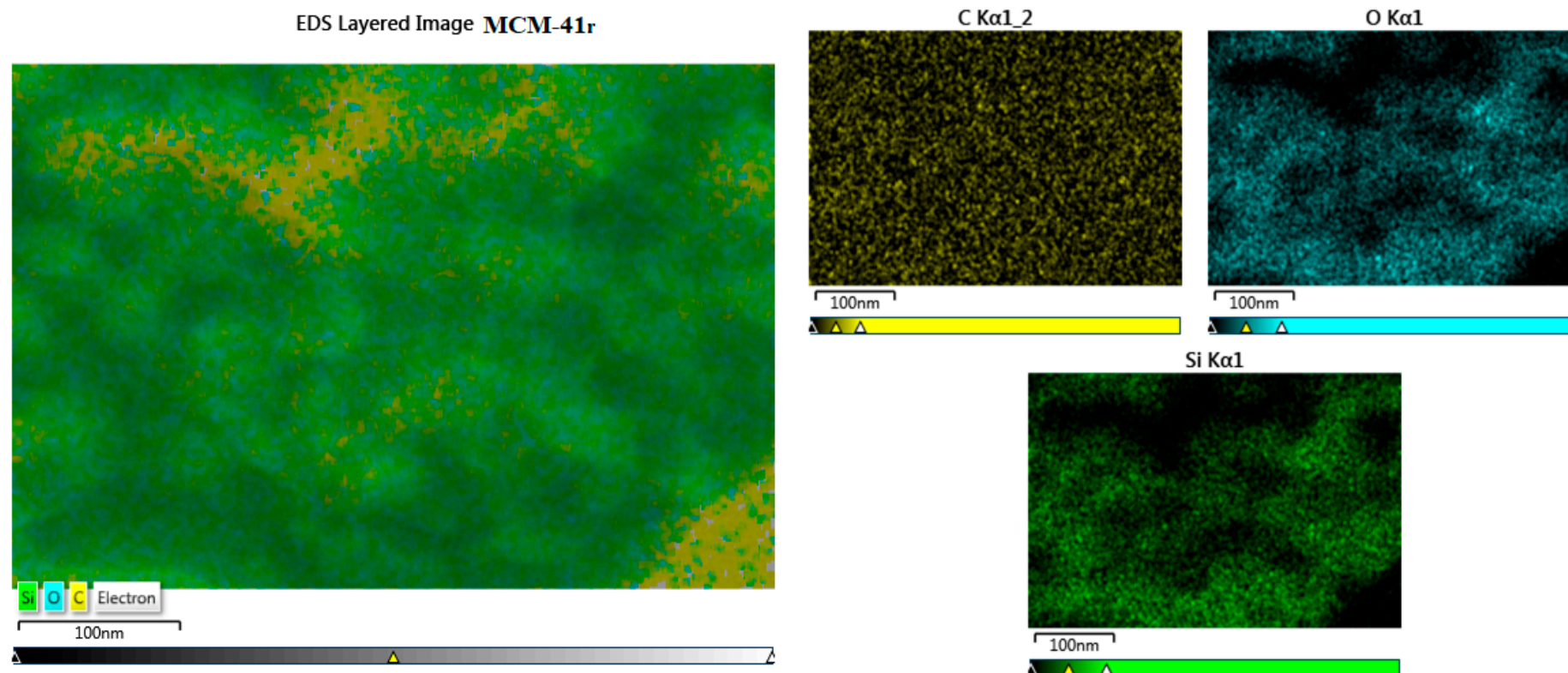
**Supplementary material - Efficient rice husk-derived silica nanocatalysts for organic dyes removal from water**



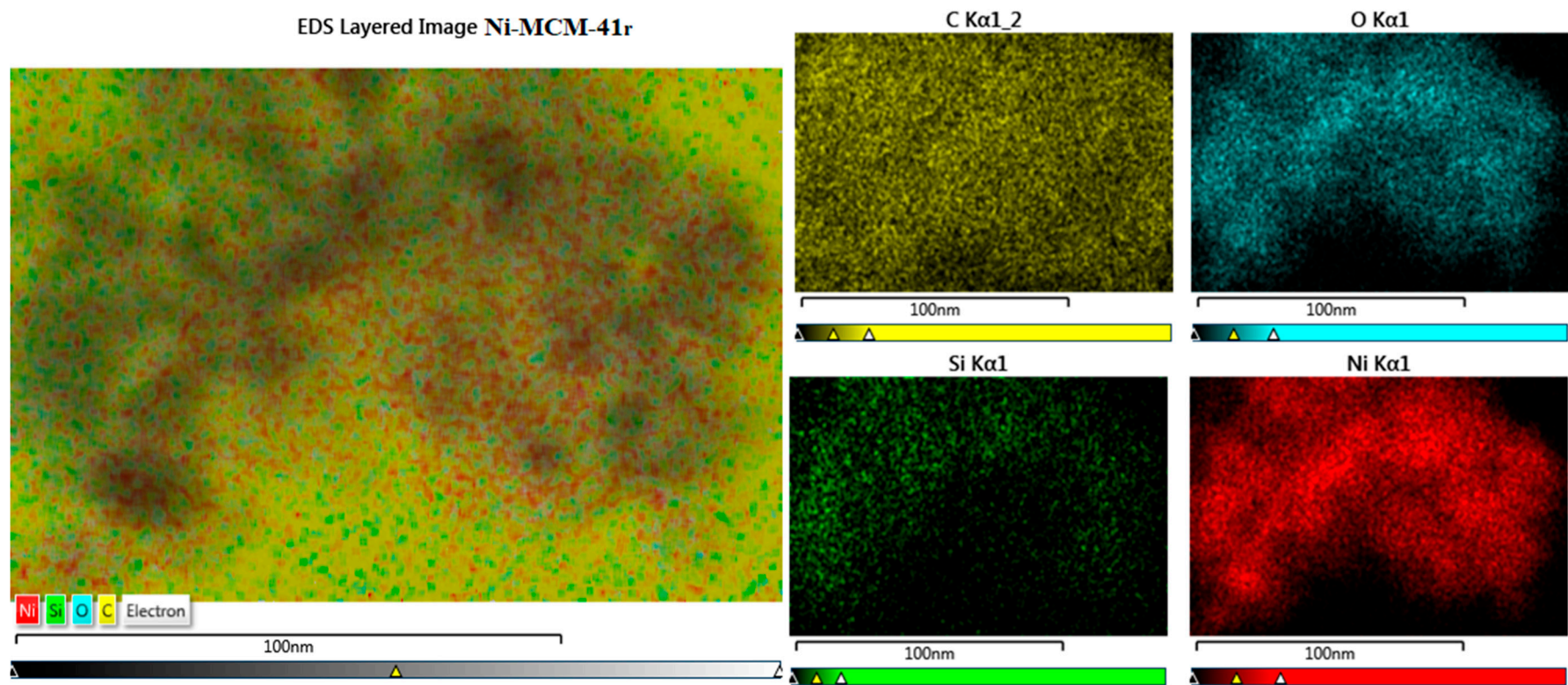
**Figure S1. TEM images for MCM-41<sub>r</sub> (a), Ni-MCM-41<sub>r</sub> (b) and Fe-MCM-41<sub>r</sub> (c)**

**Table S1. Structural properties derived from TEM analysis**

<b>Sample</b>	<b>Pore medium diameter (nm)</b>
MCM-41 <sub>r</sub>	3.74
Ni-MCM-41 <sub>r</sub>	3.74
Fe-MCM-41 <sub>r</sub>	2.81



**Figure S2. EDS mapping for MCM-41r**



**Figure S3. EDS mapping for Ni-MCM-41<sub>r</sub>**



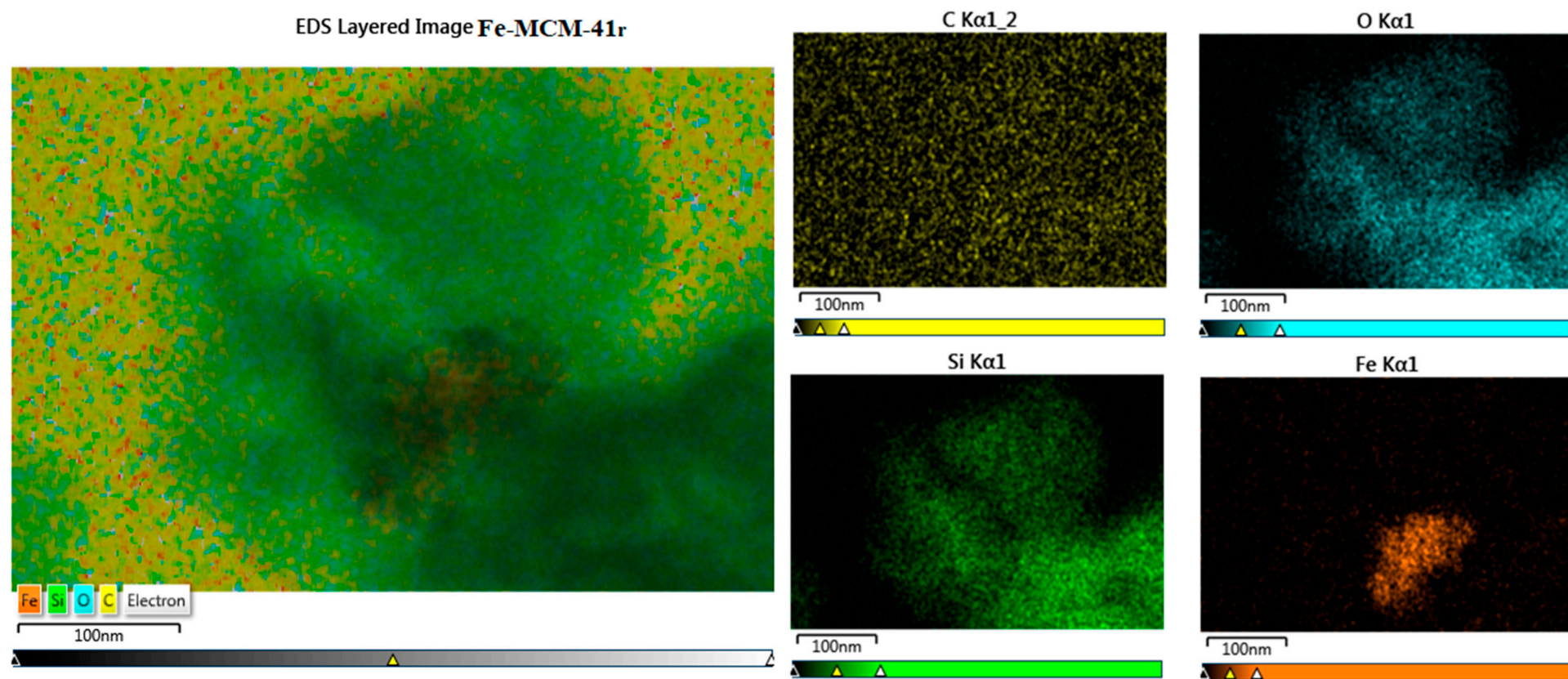


Figure S4. EDS mapping for Fe-MCM-41<sub>r</sub>