

# Association of *MGMT* Promoter and Enhancer Methylation with Genetic Variants, Clinical Parameters, and Demographic Characteristics in Glioblastoma

Katja Zappe <sup>1</sup>, Katharina Pühringer <sup>1</sup>, Simon Pflug <sup>1</sup>, Daniel Berger <sup>1</sup>, Serge Weis <sup>2</sup>, Sabine Spiegl-Kreinecker <sup>3</sup>, and Margit Cichna-Markl <sup>1,\*</sup>

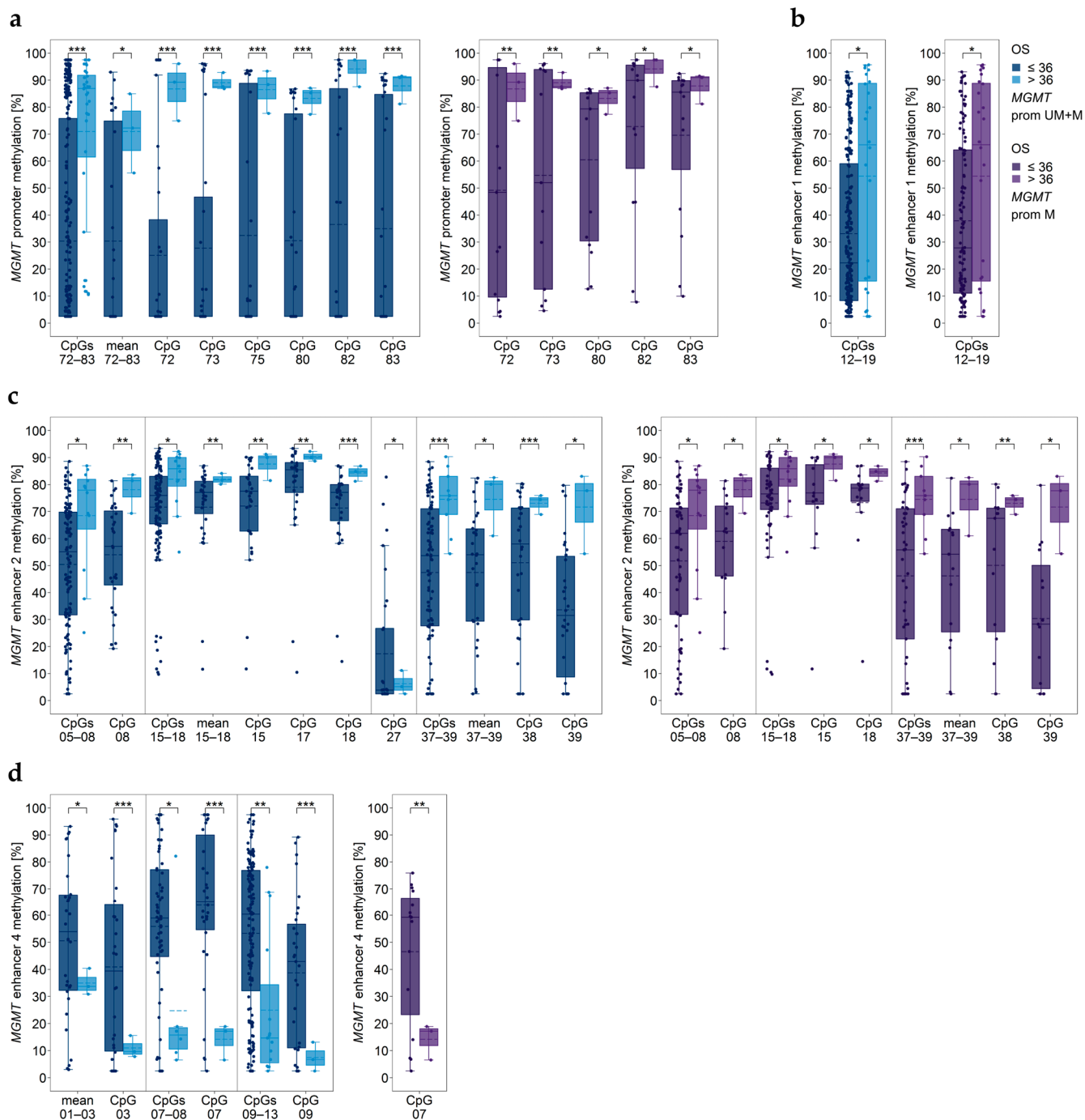
<sup>1</sup> Department of Analytical Chemistry, Faculty of Chemistry, University of Vienna, 1090 Vienna, Austria; katja.zappe@univie.ac.at (K.Z.); katharina.puehringer@univie.ac.at (K.P.); n12030136@students.meduniwien.ac.at (S.P.); office@berger-daniel.at (D.B.)

<sup>2</sup> Division of Neuropathology, Department of Pathology and Molecular Pathology, Kepler University Hospital GmbH, Johannes Kepler University, 4040 Linz, Austria; serge.weis@kepleruniklinikum.at

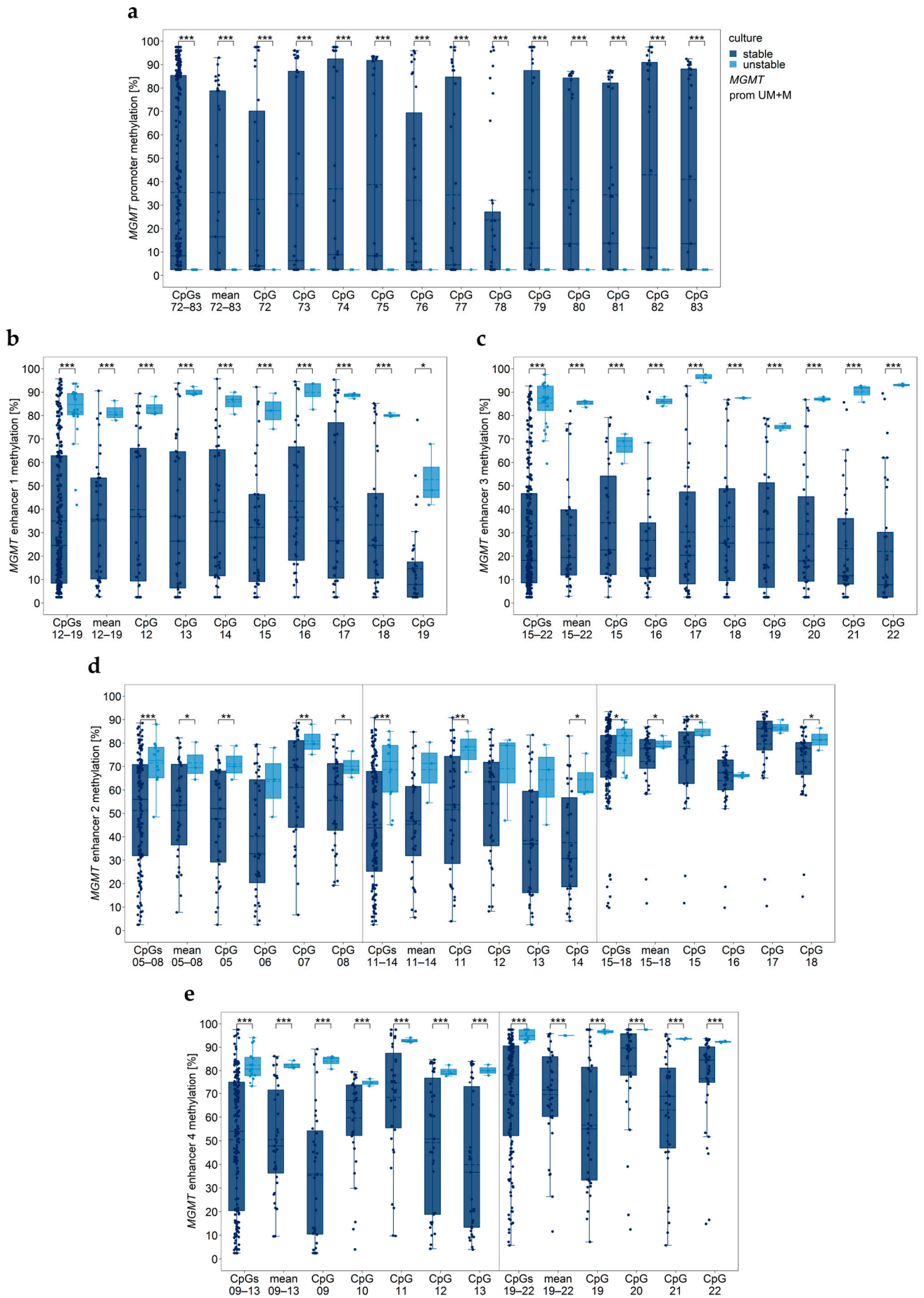
<sup>3</sup> Department of Neurosurgery, Kepler University Hospital GmbH, Johannes Kepler University, 4040 Linz, Austria; sabine.spiegl-kreinecker@kepleruniklinikum.at

\* Correspondence: margit.cichna@univie.ac.at (MCM)

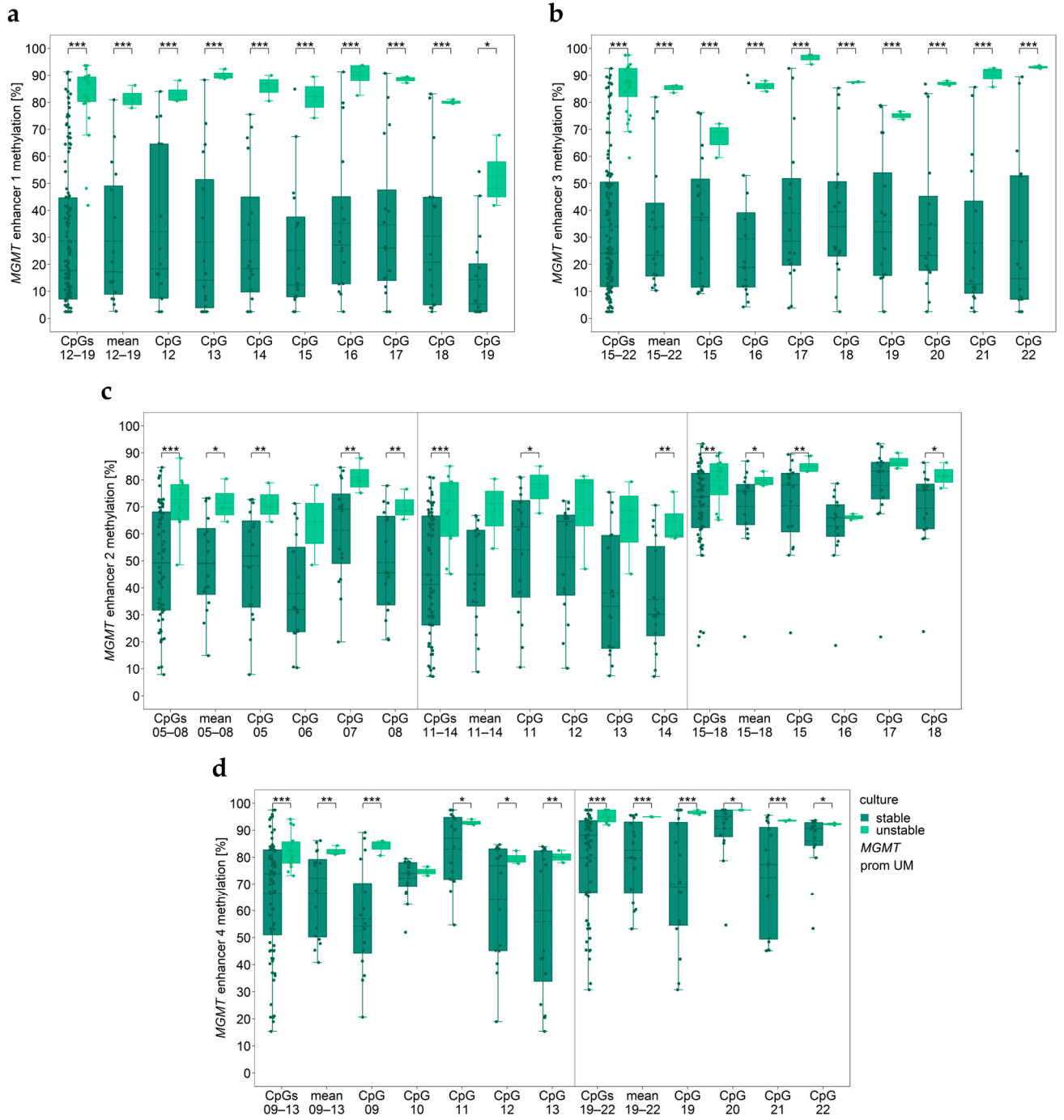
---



**Figure S1.** Significantly different *MGMT* promoter/enhancer methylation levels between non-long-term survivors ( $\leq 36$  months) and long-term survivors ( $> 36$  months). *MGMT* (a) promoter, (b) enhancer 1, (c) enhancer 2, and (d) enhancer 4 regions. prom M: promoter methylated (purple), UM: unmethylated, UM+M (blue) samples. Gray vertical lines separate data obtained with different assays. Significance levels: \*  $p \leq 0.05$ , \*\*  $p \leq 0.01$ , \*\*\*  $p \leq 0.001$ . Data points represent the mean of two independent runs.



**Figure S2.** MGMT promoter/enhancer methylation levels of stable and unstable cell cultures. MGMT (a) promoter, (b) enhancer 1, (c) enhancer 3, (d) enhancer 2, and (e) enhancer 4 regions. Gray vertical lines separate data obtained with different assays. Significance levels: \* $p \leq 0.05$ , \*\* $p \leq 0.01$ , \*\*\* $p \leq 0.001$ . Data points represent the mean of two independent runs. Due to limited sample amount, GBM24, GBM36, and GBM37 were omitted from analysis of enhancer 2 CpGs 24-27 and CpGs 37-39 as well as enhancer 4 CpGs 01-03, CpGs 07-08. GBM36 was also not analyzed for enhancer 4 CpG 19-22. prom M: promoter methylated, UM: unmethylated.



**Figure S3.** MGMT promoter/enhancer methylation levels of stable and unstable cell cultures in MGMT promoter unmethylated samples. MGMT (a) enhancer 1, (b) enhancer 3, (c) enhancer 2, and (d) enhancer 4 regions of promoter unmethylated patients. Gray vertical lines separate data obtained with different assays. Significance levels: \* $p \leq 0.05$ , \*\* $p \leq 0.01$ , \*\*\* $p \leq 0.001$ . Data points represent the mean of two independent runs. Due to limited sample amount, GBM24, GBM36, and GBM37 were omitted from analysis of enhancer 2 CpGs 24-27 and CpGs 37-39 as well as enhancer 4 CpGs 01-03, CpGs 07-08. GBM36 was also not analyzed for enhancer 4 CpG 19-22. prom UM: promoter unmethylated.