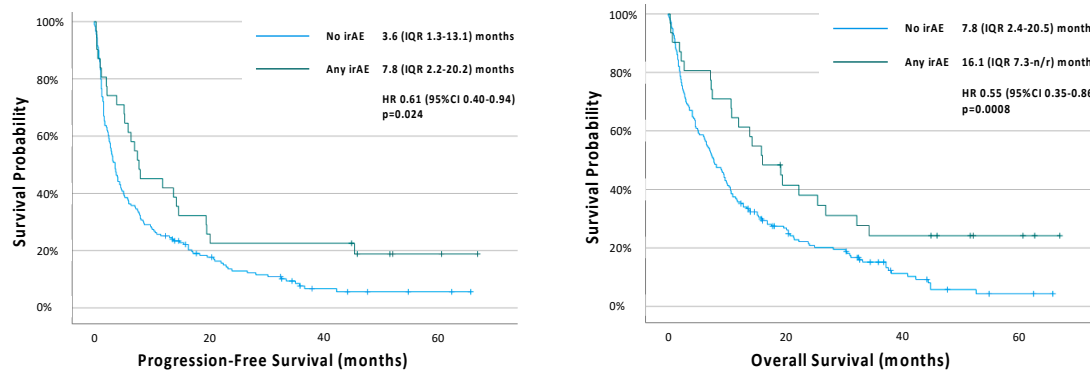


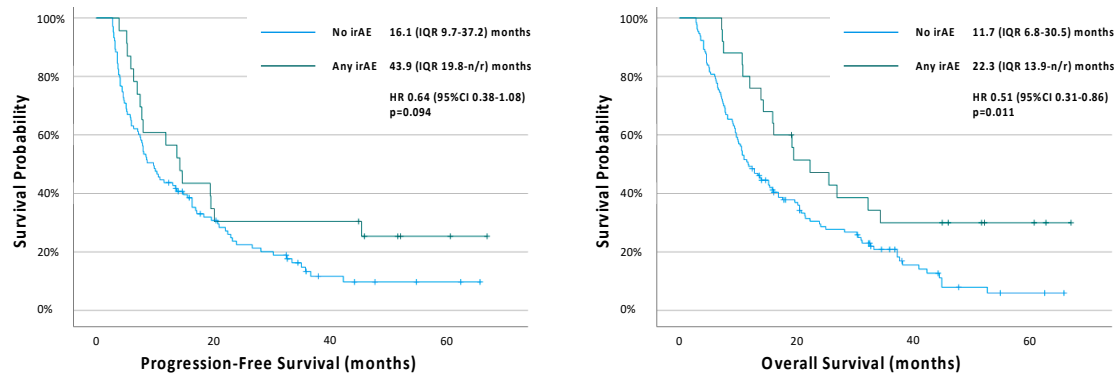
	Progression-Free Survival (months)	Overall Survival (months)
	Median (IQR)	Median (IQR)
<b>Patients</b>		
<b>Without irAE</b>	3.6 (1.3-13.1)	7.8 (2.4-20.5)
<b>With irAE</b>	16.8 (5.9-n/r)	27.4 (13.9-n/r)
<b>irAE Events</b>		
<b>All</b>	n/a	n/a
<b>Dermatological</b>	19.6 (7.0-n/r)	26.9 (12.6-n/r)
<b>Endocrine</b>	17.1 (10.4-n/r)	33.6 (19.7-n/r)
<b>Gastrointestinal</b>	45.4 (24.2-n/r)	n/r (22.3-n/r)
<b>Hepatic</b>	11.5 (2.2-n/r)	n/r (12.0-n/r)
<b>Musculoskeletal</b>	19.4 (6.4-26.5)	19.9 (10.8-35.3)
<b>Pulmonary</b>	3.9 (0.4-7.5)	7.3 (0.7-10.7)

**Supplementary Table S1:** Progression-free survival and overall survival for patients with or without irAE and irAE events by the organ affected. n/r = not reached. n/a = not applicable

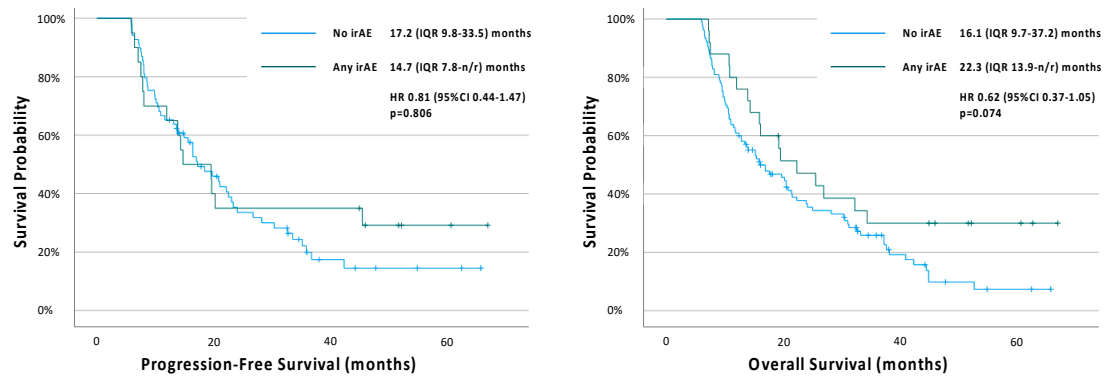
A



B

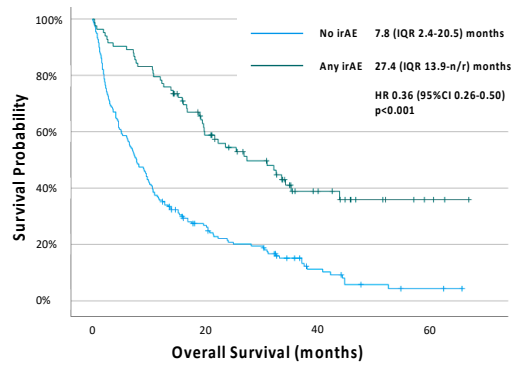
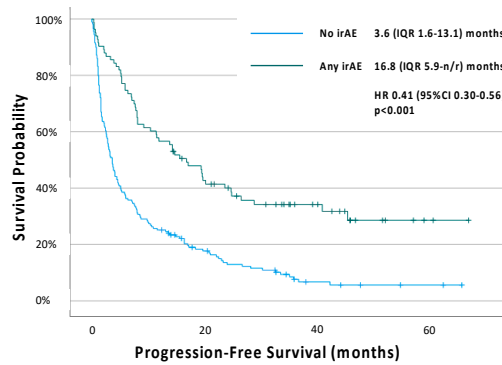


C

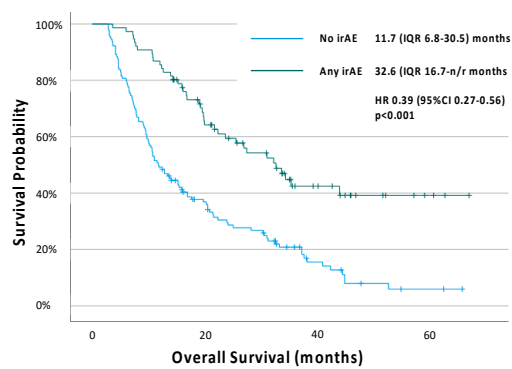
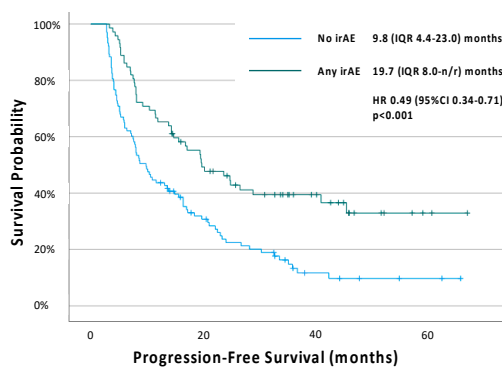


**Supplementary Figure S1:** Kaplan-Meier survival curves examining the relationship between the occurrence of severe (i.e. grade 3-5) immune-related adverse events and progression-free survival or overall survival in (A) all patients, (B) 12-week landmark and (C) 24-week landmark. n/r = not reached

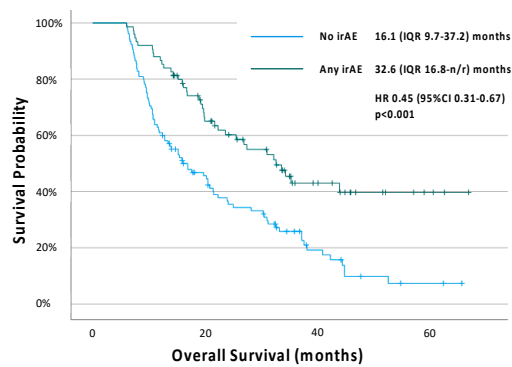
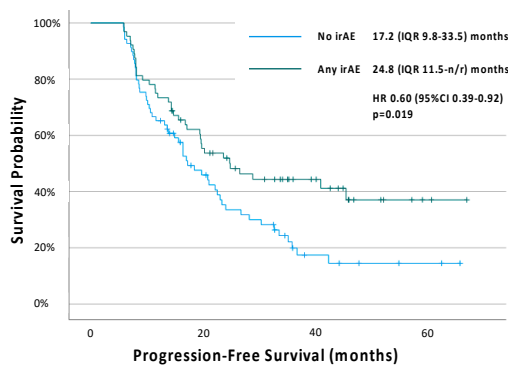
A



B

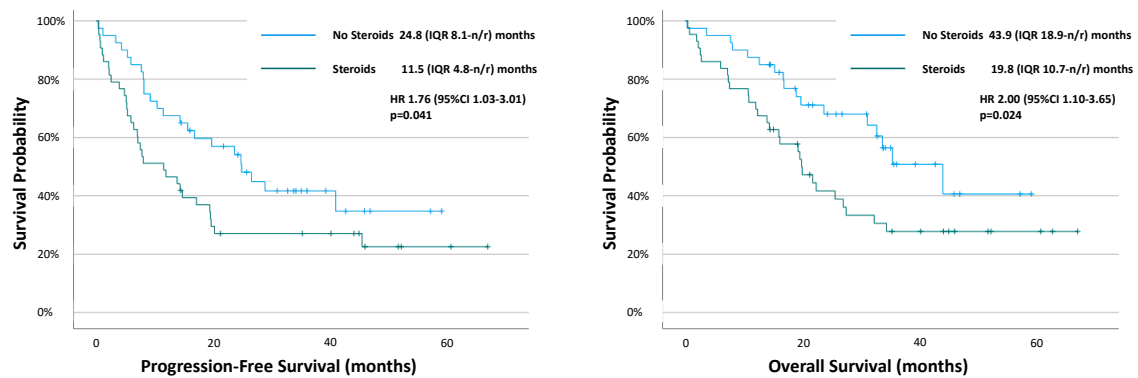


C

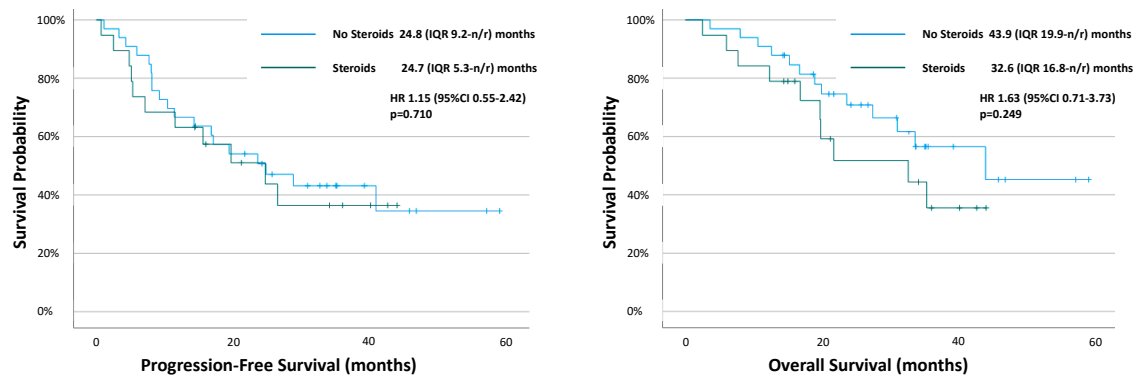


**Supplementary Figure S2:** Kaplan-Meier survival curves examining the relationship between the occurrence of mild (i.e. grade 1-2) immune-related adverse events and progression-free survival or overall survival in (A) all patients, (B) 12-week landmark and (C) 24-week landmark. n/r = not reached

A

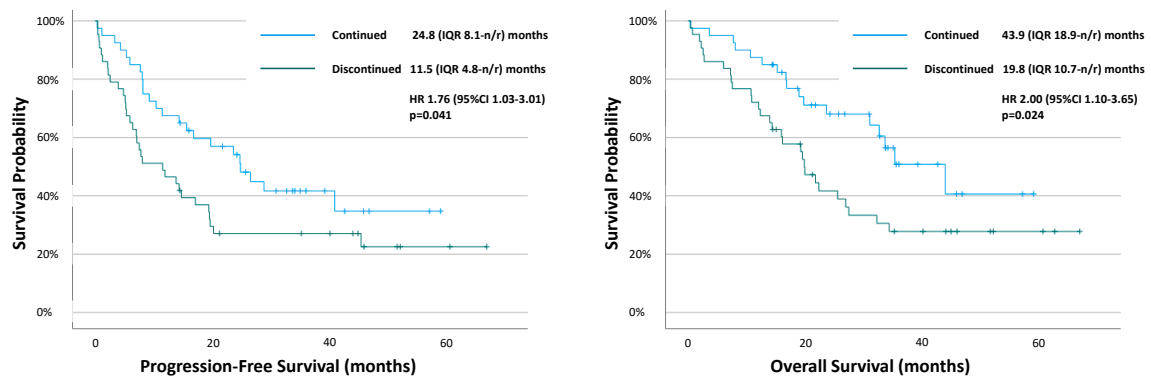


B

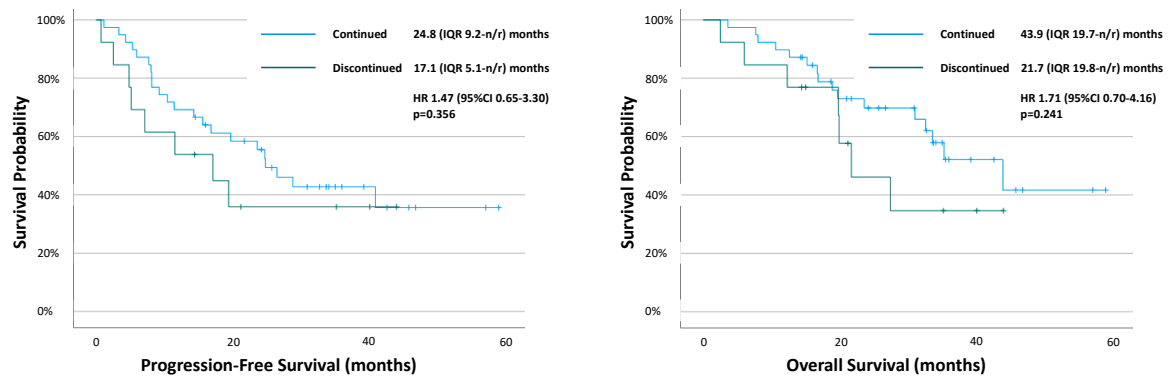


**Supplementary Figure S3:** Kaplan-Meier survival curves examining the relationship between steroid use and progression-free survival or overall survival in (A) all patients and (B) patients with mild (i.e. grade 1-2) immune-related adverse events. n/r = not reached

A



B

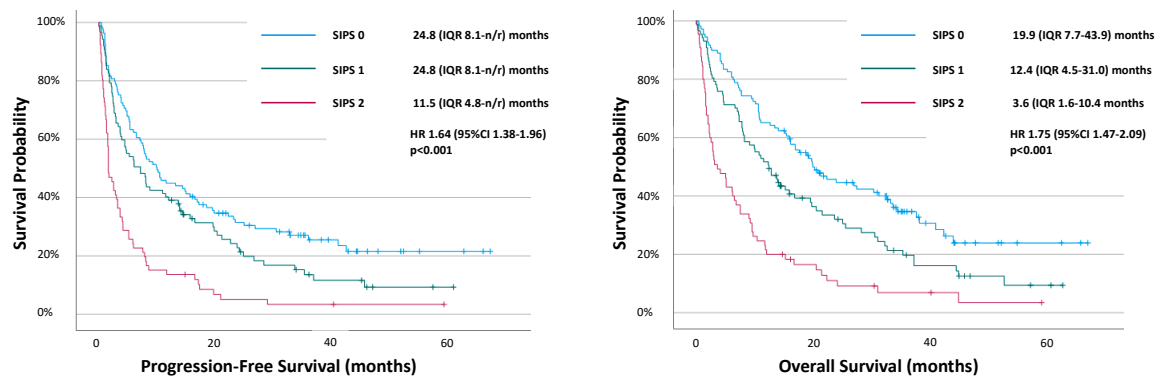


**Supplementary Figure S4:** Kaplan-Meier survival curves examining the relationship between treatment discontinuation and progression-free survival or overall survival in (A) all patients and (B) patients with mild (i.e. grade 1-2) immune-related adverse events. n/r = not reached

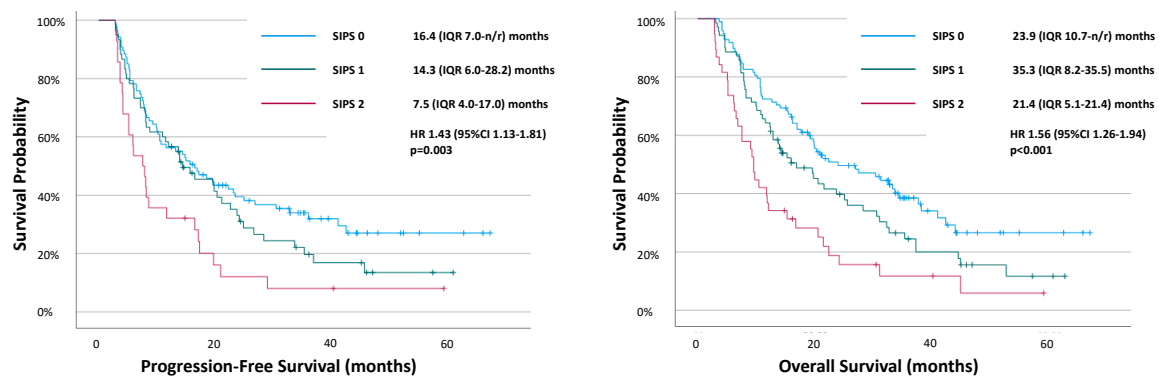
	Progression-Free Survival				Overall Survival			
	Univariate		Multivariate		Univariate		Multivariate	
	HR (95% CI)	<i>p</i>	HR (95% CI)	<i>P</i>	HR (95% CI)	<i>p</i>	HR (95% CI)	<i>p</i>
Age (<75 years, ≥75 years)	1.21 (0.85-1.73)	<i>0.288</i>			1.16 (0.79-1.70)	<i>0.447</i>		
Sex (Male, Female)	1.08 (0.83-1.41)	<i>0.574</i>			0.99 (0.75-1.30)	<i>0.924</i>		
Performance Status (0, 1, 2)	<b>1.55 (1.20-2.00)</b>	<b>0.01</b>	<b>1.40 (1.07-1.83)</b>	<b>0.012</b>	<b>1.64 (1.25-2.26)</b>	<b>&lt;0.001</b>	<b>1.49 (1.12-1.98)</b>	<b>0.006</b>
Histological Subtype (Squamous, non-squamous)	1.06 (0.76-1.47)	<i>0.751</i>			1.07 (0.76-1.49)	<i>0.712</i>		
PD-L1 Status (<90%, ≥90%)	<b>0.76 (0.58-1.00)</b>	<b>0.048</b>	<b>0.71 (0.54-0.93)</b>	<b>0.012</b>	0.76 (0.58-1.01)	<i>0.055</i>		
WCC (≤11x10 <sup>9</sup> /L, >11x10 <sup>9</sup> /L)	<b>1.54 (1.17-2.03)</b>	<b>0.002</b>			<b>1.67 (1.26-2.23)</b>	<b>&lt;0.001</b>		
Neutrophils (≤7.5x10 <sup>9</sup> /L, >7.5x10 <sup>9</sup> /L)	<b>1.76 (1.34-2.32)</b>	<b>&lt;0.001</b>			<b>1.88 (1.42-2.49)</b>	<b>&lt;0.001</b>		
Neutrophil/Lymphocyte Ratio (≤5, >5)	<b>1.68 (1.29-2.20)</b>	<b>&lt;0.001</b>			<b>1.85 (1.40-2.44)</b>	<b>&lt;0.001</b>		
Platelet/Neutrophil Ratio (≤180, >180)	1.27 (0.95-1.70)	<i>0.108</i>			<b>1.39 (1.02-1.88)</b>	<b>0.036</b>		
Albumin (<35g/L, ≥35g/L)	<b>1.93 (1.48-2.53)</b>	<b>&lt;0.001</b>			<b>2.12 (1.60-2.80)</b>	<b>&lt;0.001</b>		
Prognostic Nutritional Index (<45, ≥45)	<b>0.63 (0.48-0.83)</b>	<b>0.001</b>			<b>0.57 (0.43-0.76)</b>	<b>&lt;0.001</b>		
Scottish Inflammatory Prognostic Score (0, 1, 2)	<b>1.66 (1.39-1.97)</b>	<b>&lt;0.001</b>	<b>1.64 (1.38-1.96)</b>	<b>&lt;0.001</b>	<b>1.75 (1.47-2.09)</b>	<b>&lt;0.001</b>	<b>1.69 (1.41-2.02)</b>	<b>&lt;0.001</b>

**Supplementary Table S2:** The relationship between prognostic factors and progression-free or overall survival in all patients. Bold/italics represent statistically significant findings (p<0.05)

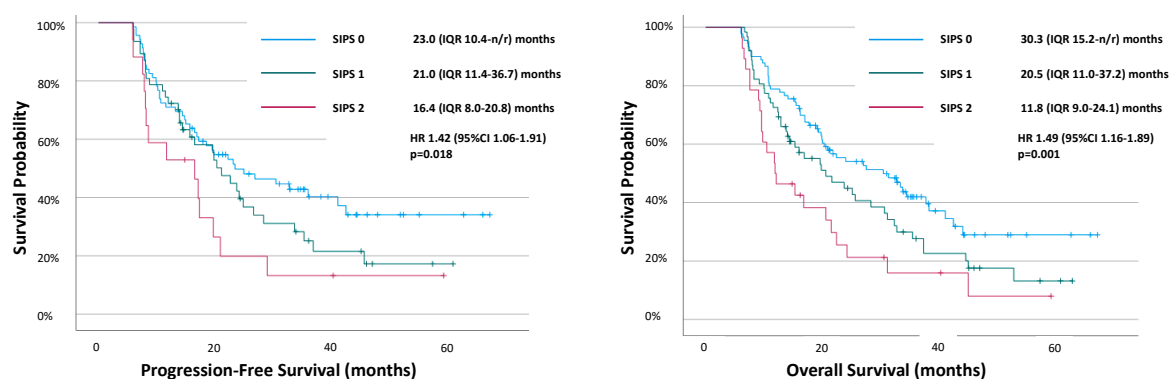
A



B

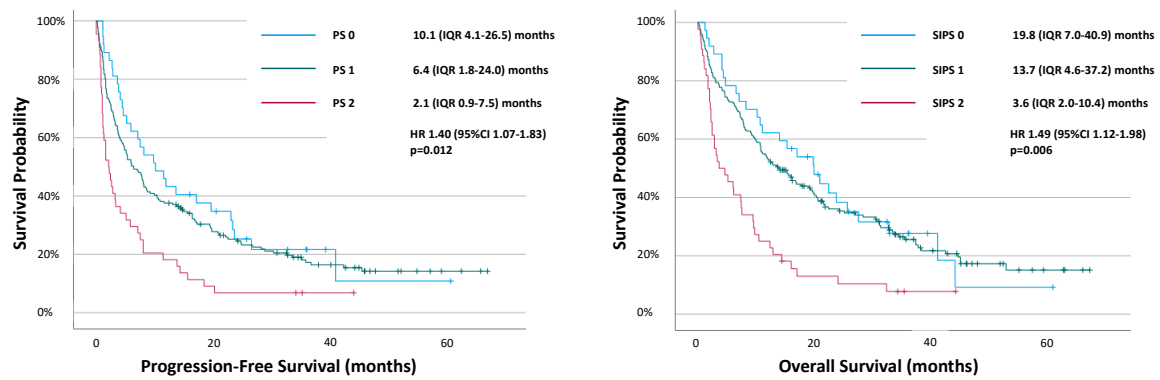


C



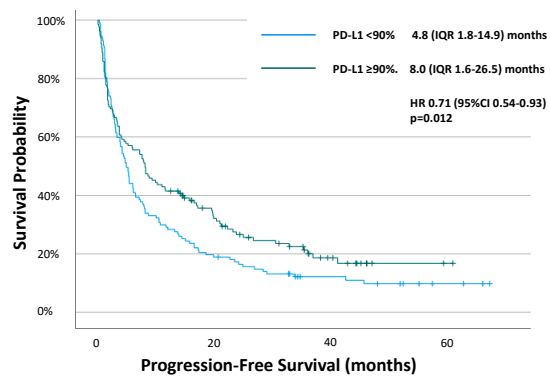
**Supplementary Figure S5:** Kaplan-Meier survival curves examining the relationship between the Scottish Inflammatory Prognostic Score (SIPS) and progression-free survival or overall survival in (A) all patients, (B) 12-week landmark and (C) 24-week landmark. n/r = not reached

A



**Supplementary Figure S6:** Kaplan-Meier survival curves examining the relationship between performance status (PS) and progression-free survival or overall survival in all patients





**Supplementary Figure S7:** Kaplan-Meier survival curves examining the relationship between PD-L1 status and progression-free survival