

Supplementary Materials: The Geriatric Nutritional Risk Index Predicts Prognosis in Japanese Patients with LATITUDE High-Risk Metastatic Hormone-Sensitive Prostate Cancer: A Multi-Center Study

Taku Naiki, Kiyoshi Takahara, Hiromitsu Watanabe, Keita Nakane, Yosuke Sugiyama, Takuya Koie, Ryoichi Shiroki, Hideaki Miyake and Takahiro Yasui

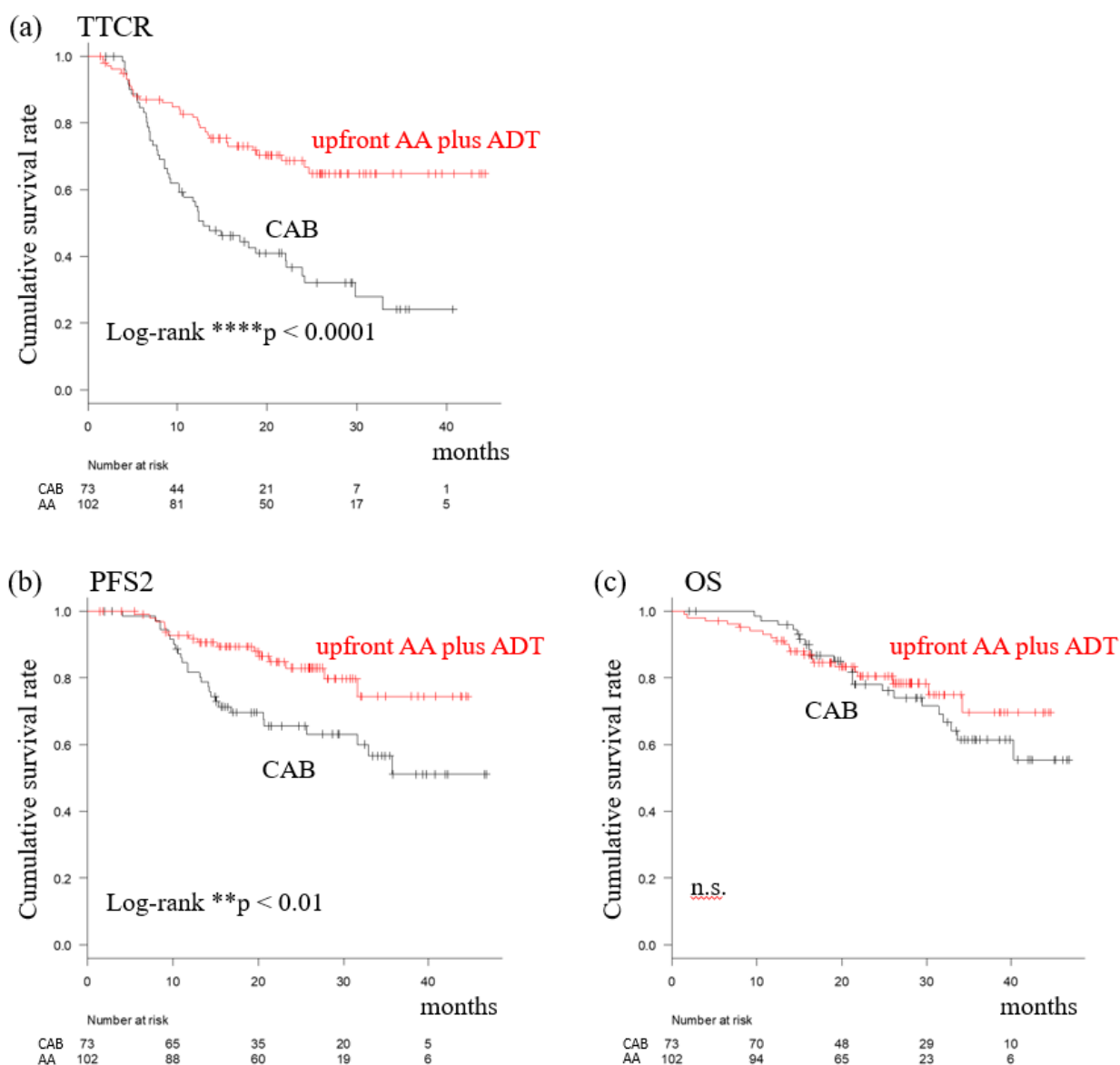


Figure S1. TTCR (a), PFS 2.

Table S1. Patients' characteristics and oncological outcomes for CAB and upfront AA plus ADT groups.

Characteristics		CAB group (n=73)	Upfront AA plus ADT group (n=102)	p value
Median age, years (range)		76 (58–91)	74 (48–87)	0.16
Median initial serum PSA levels, ng/ml (range)		227 (3.5–1000)	265 (0.8–16720)	0.15
Median BMI, kg/m ² (range)		22.7 (16.3–34.1)	22.6 (14.2–31.6)	0.31
Gleason score at initial diagnosis, n (%)	4+3	1 (1.4)	1 (1.0)	0.15
	4+4	35 (47.9)	32 (31.4)	
	4+5	21 (28.8)	36 (35.3)	
	5+4	12 (16.4)	20 (19.6)	
	5+5	4 (5.5)	13 (12.7)	
Clinical T stage	2a	0 (0)	4 (3.9)	0.36
	2b	5 (6.8)	3 (2.9)	
	2c	5 (6.8)	11 (10.8)	
	3a	15 (20.5)	25 (24.5)	
	3b	25 (34.2)	29 (28.4)	
	4	23 (31.5)	30 (29.4)	
Clinical N stage	N0	40 (54.8)	47 (46.1)	0.53
	N1	32 (43.8)	52 (51.0)	
	N2	1 (1.4)	3 (2.9)	
Visceral metastasis, n (%)	no	52 (71.2)	65 (63.7)	0.33
	yes	21 (28.8)	37 (36.3)	
ECOG–PS, n (%)	0	50 (68.5)	77 (75.5)	0.31
	1	17 (23.3)	13 (12.7)	
	2	5 (6.8)	10 (9.8)	
	3	1 (1.4)	2 (2.0)	
Existence of symptom, n (%)		42 (57.5)	60 (58.8)	0.89
The use of bone modifying agents, n (%)		38 (52.1)	64 (62.7)	0.17
Median serum albumin level, g/dl (range)		3.9 (1.5–6.6)	3.9 (2.2–4.8)	0.76
Median serum ALP level, U/l (range)		372 (81–8300)	446 (139–11620)	0.55
GNRI level	low	14 (19.2)	22 (21.6)	0.85
	high	59 (80.8)	80 (78.4)	
50% decline in PSA, n (%)		61 (83.6)	88 (86.3)	0.67
Median period to PSA nadir, days (range)		201 (37–980)	298 (21–1215)	0.13
CRPC development, n (%)		47 (64.4)	31 (30.4)	< 0.001***

AA: Abiraterone acetate, ADT: Androgen deprivation therapy, ALP: Alkaline phosphatase, Bica: bicalutamide, BMI: Body mass index, CAB: Combined androgen blockade, CRPC: Castration-resistant prostate cancer, ECOG–PS: Eastern Cooperative Oncology Group performance status, GNRI: Geriatric nutritional index, PSA: Prostate specific antigen.