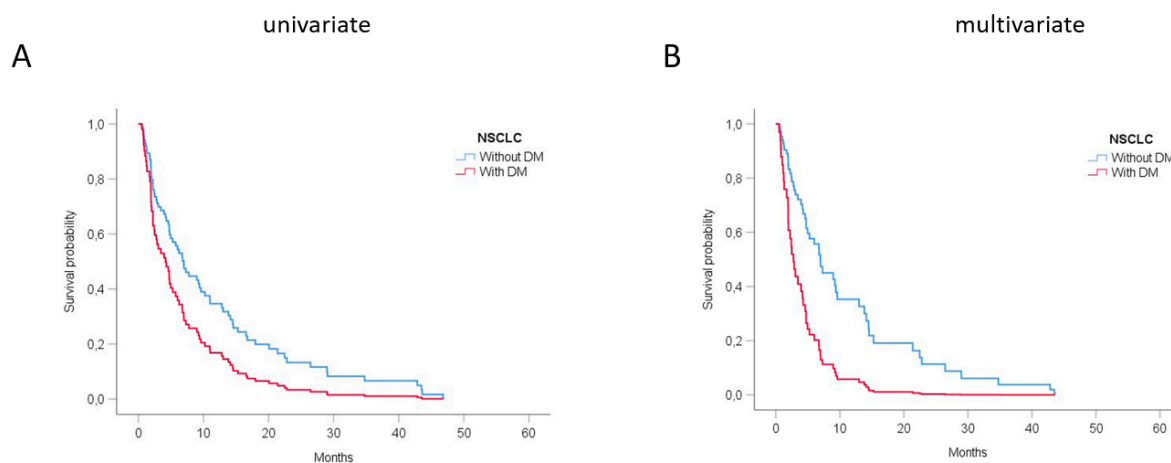


Supplements

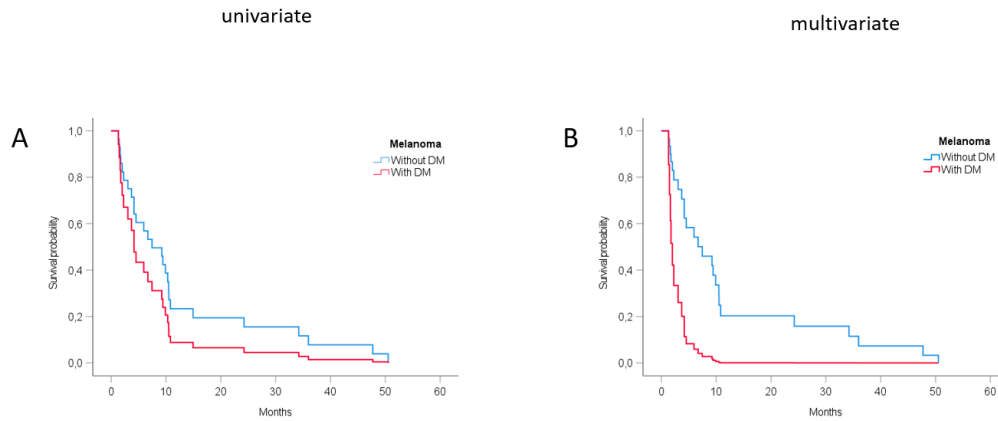
Supplement Figure S1. Uni- and multivariate cox regression analysis of survival of patients with (red)/without (blue) DM in patients with NSCLC



Supplement Table S1. Uni- and multivariate survival analysis (Cox-Regression) of prognostic factors in NSCLC patients

| | | Univariate analysis | | Multivariate analysis | |
|-------------------|------|---------------------|---------|-----------------------|---------|
| | | HR (95% CI) | p-value | HR (95% CI) | p-value |
| Diabetes mellitus | No | Ref | | Ref | |
| | Yes | 1.68 (0.97 – 2.93) | 0.066 | 2.73 (1.32 – 5.63) | 0.006 |
| Age | <70 | Ref | | Ref | |
| | ≥ 70 | 1.539 (0.85 – 2.72) | 0.151 | 1.31 (0.63 – 2.73) | 0.475 |
| KPS | ≥ 70 | Ref | | Ref | |
| | <70 | 2.47 (1.40 – 4.38) | 0.002 | 2.85 (1.52 – 5.33) | 0.001 |
| No. of BM | ≤ 3 | Ref | | Ref | |
| | >3 | 1.26 (0.77 – 2.04) | 0.355 | 1.18 (0.67 – 2.10) | 0.565 |

Supplement Figure S2. Uni- and multivariate cox regression analysis of survival of patients with (red)/without (blue) DM in patients with melanoma



Supplement Table S2. Uni- and multivariate (Cox-Regression) of prognostic factors in melanoma patients

| | | Univariate analysis | | Multivariate analysis | |
|-------------------|------|---------------------|---------|-----------------------|---------|
| | | HR (95% CI) | p-value | HR (95% CI) | p-value |
| Diabetes mellitus | No | Ref | | Ref | |
| | Yes | 1.66 (0.38 – 7.27) | 0.498 | 4.62 (0.49 – 44.04) | 0.183 |
| Age | <70 | Ref | | Ref | |
| | ≥ 70 | 1.07(0.45 - 2.6) | 0.875 | 0.98 (0.35 – 2.73) | 0.966 |
| KPS | ≥ 70 | Ref | | Ref | |
| | <70 | 1.47 (0.6 – 3.61) | 0.405 | 1.46 (0.55 – 3.93) | 0.448 |
| No. of BM | ≤ 3 | Ref | | Ref | |
| | >3 | 1.27 (0.57 – 2.84) | 0.555 | 1.18 (0.49– 2.81) | 0.717 |