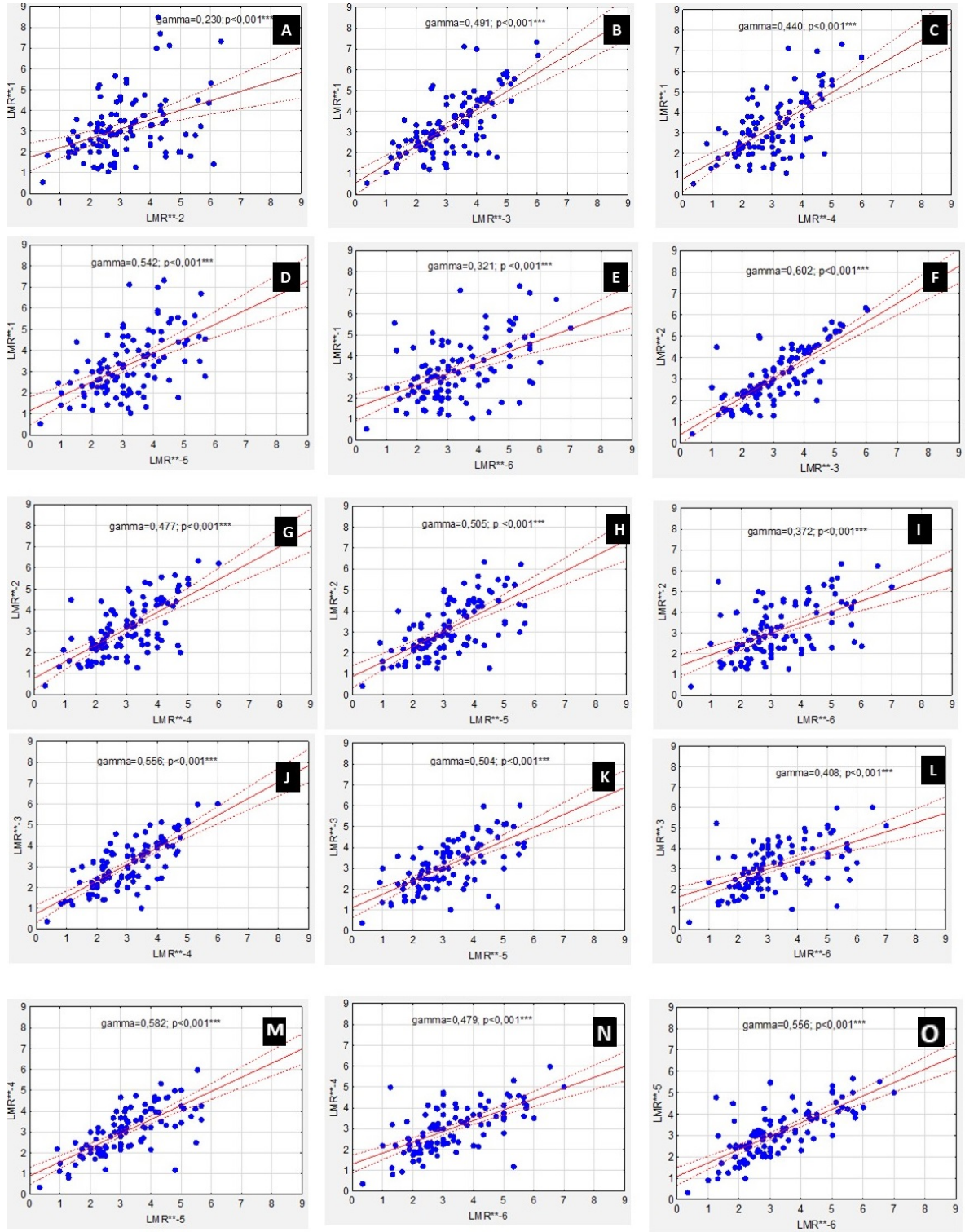
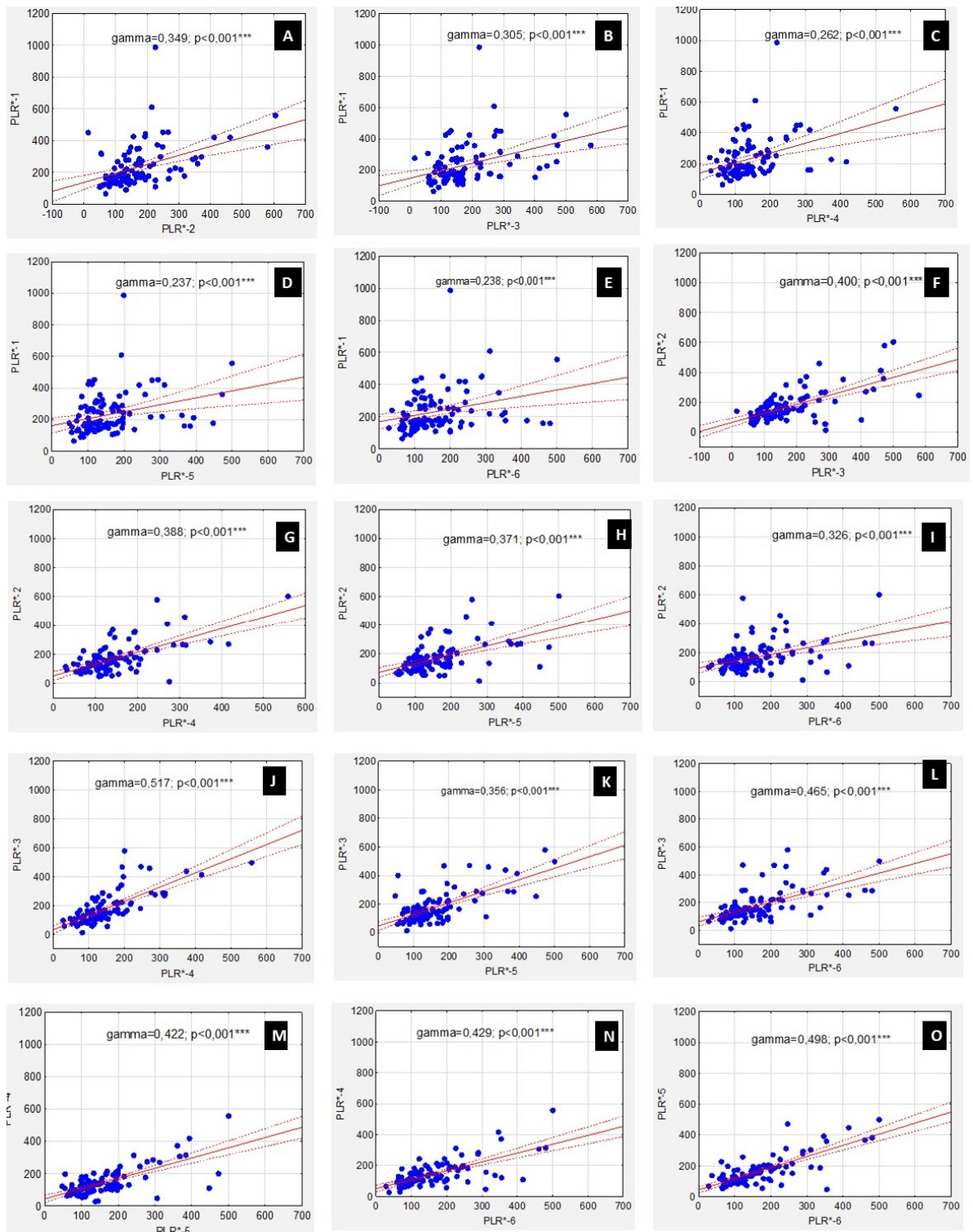


**Figure S1.** (A–O) Correlation between the neutrophil-to-lymphocyte ratios during first-line chemotherapy in ovarian cancer patients. NLR\*—neutrophil-to-lymphocyte ratio; \*\*\*  $p$  statistically significant.

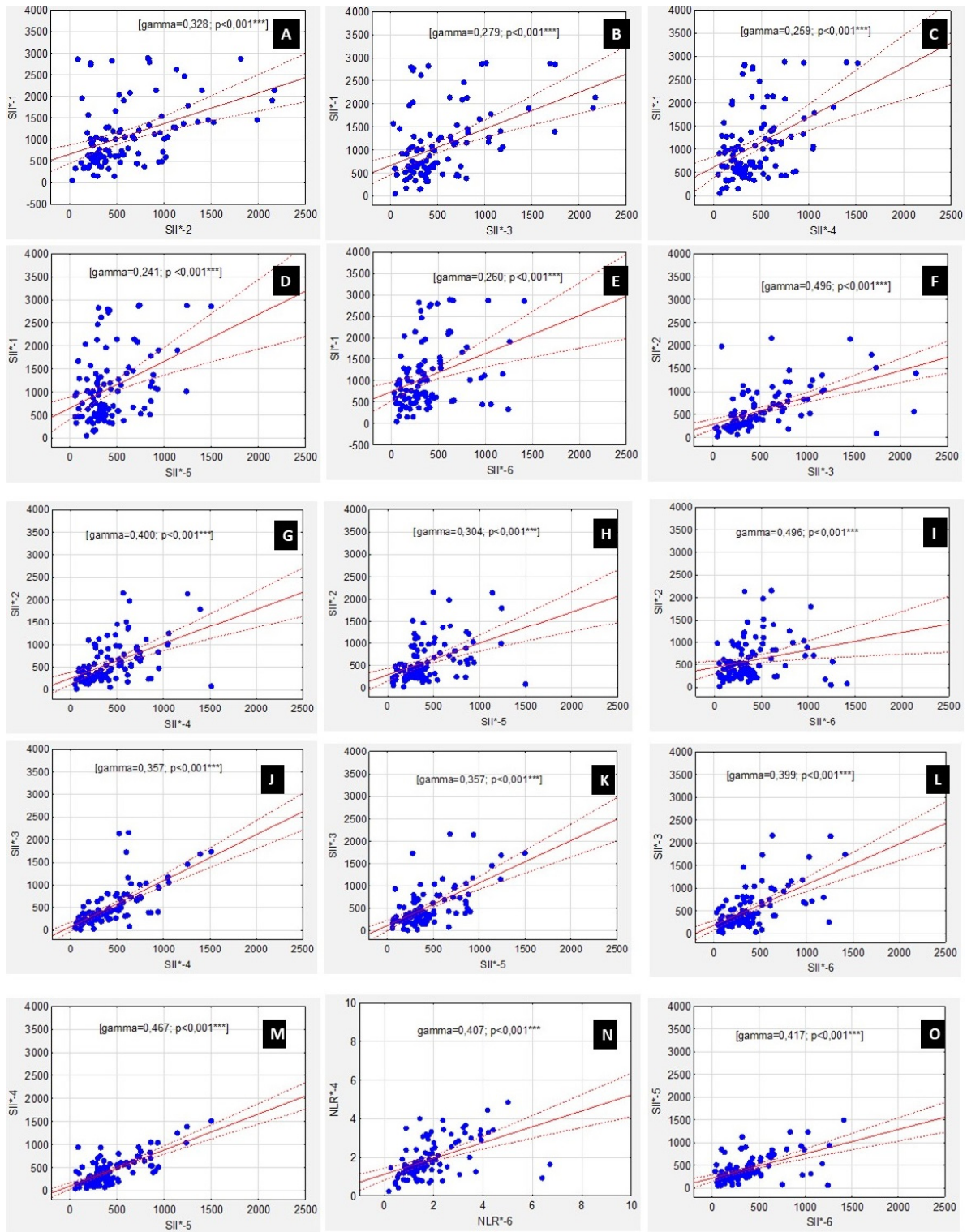


**Figure S2.** (A–O) Correlation between lymphocyte-to-monocyte ratios during first-line chemotherapy in ovarian cancer patients. LMR\*\*—lymphocyte-to-monocyte ratio; \*\*\*  $p$  statistically significant.



**Figure S3.** (A–O) Correlation between the platelet-to lymphocyte ratios during first-line chemotherapy in ovarian cancer patients. PLR\*—lymphocyte-to-monocyte ratio; \*\*\*  $p$  statistically significant.





**Figure S4.** (A–O) Correlation between the systemic inflammatory index values during first-line chemotherapy in ovarian cancer patients. SII\*—systemic inflammatory index; \*\*\*  $p$  statistically significant