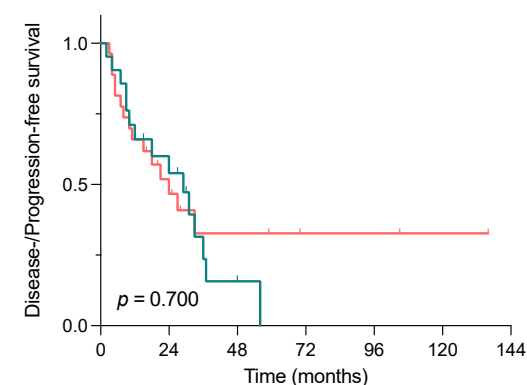


**Supplementary Table S1.** Characteristics of patients who underwent liver-directed surgery for NELM according to surgical approach.

		<b>MILS (n = 13)</b>	<b>OLS (n = 39)</b>	<b>p</b>
Gender <sup>1</sup>	Female	6 (46%)	24 (62%)	0.331
	Male	7 (54%)	15 (38%)	
Age (years) <sup>2</sup>		57 (46 – 73)	60 (21 – 80)	0.664
BMI (kg/m <sup>2</sup> ) <sup>2</sup>		25 (20 – 36)	25 (19 – 34)	0.715
ASA <sup>1</sup>	2	5 (38%)	27 (69%)	<b>0.048</b>
	3	8 (62%)	12 (31%)	
Localization of primary <sup>1</sup>	Pancreas	6 (46%)	17 (44%)	0.872
	Small intestine	7 (54%)	22 (56%)	
Appearance of metastases <sup>1</sup>	Synchronous	10 (77%)	28 (72%)	0.718
	Metachronous	3 (23%)	11 (28%)	
Indication <sup>1</sup>	Curative	5 (38%)	17 (44%)	0.746
	Debulking	8 (62%)	22 (56%)	
Duration of surgery (minutes) <sup>2</sup>		285 (130 – 504)	265 (90 – 575)	0.767
Extent of surgery <sup>1</sup>	Major resection	3 (23%)	14 (36%)	0.636
	Minor resection	10 (77%)	25 (64%)	
Simultaneous resection of primary <sup>1</sup>		4 (31%)	19 (49%)	0.259
ICU <sup>1</sup>		11 (85%)	33 (85%)	1.0
Length of ICU stay <sup>2</sup>		1 (0 – 6)	1 (0 – 35)	0.702
Length of hospital stay <sup>2</sup>		10 (7 – 20)	12 (6 – 132)	0.100
90-day complications <sup>1</sup>		6 (46%)	18 (46%)	1.0

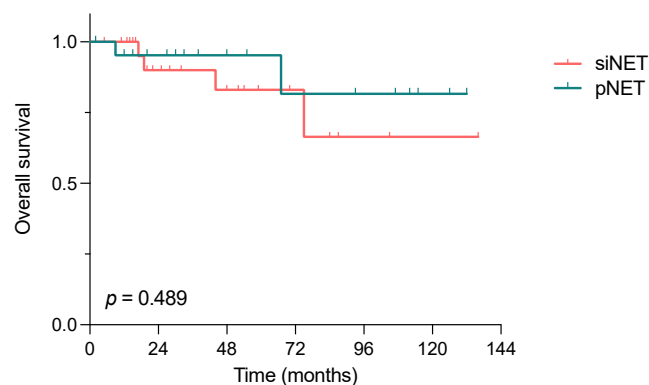
90-day major complications <sup>1</sup>		5 (38%)	15 (38%)	1.0
90-day mortality <sup>1</sup>		0 (0%)	0 (0.0%)	1.0
Resection of primary <sup>1</sup>		12 (92%)	39 (100%)	0.080
Grading primary <sup>1</sup>	G1	4 (31%)	14 (36%)	0.214
	G2	8 (61%)	25 (64%)	
	G3	1 (8%)	0 (0%)	
Grading hepatic metastases <sup>1</sup>	G1	4 (31%)	15 (38%)	0.813
	G2	8 (61%)	20 (52%)	
	G3	1 (8%)	4 (10%)	
R status <sup>1</sup>	R0	4 (31%)	17 (44%)	0.179
	R1	1 (8%)	0 (0%)	
	R2	8 (61%)	22 (56%)	
Neoadjuvant therapy <sup>1</sup>		3 (23%)	19 (49%)	0.143
Adjuvant therapy <sup>1</sup>		11 (85%)	30 (77%)	0.678
>1 adjuvant therapy modalities <sup>1</sup>		6 (46%)	20 (51%)	0.749
>2 adjuvant therapy modalities <sup>1</sup>		3 (23%)	12 (31%)	0.596

<sup>1</sup> Count (percentage); <sup>2</sup> Median (range); NELM, neuroendocrine liver metastases; MILS, Minimally invasive liver surgery; OLS, open liver surgery; BMI, Body Mass Index; ASA, American Society of Anesthesiologists; ICU, Intensive Care Unit



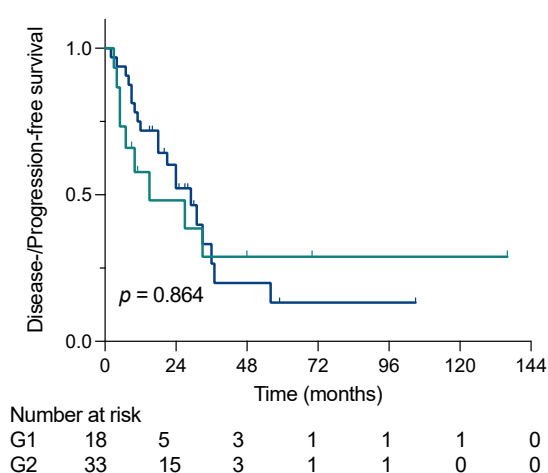
Number at risk							
siNET	29	10	4	2	2	1	0
pNET	23	10	2	0	0	0	0

(a)

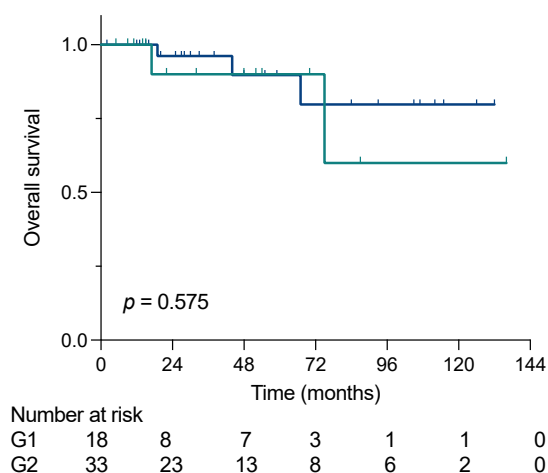


Number at risk							
siNET	29	16	11	5	2	1	0
pNET	23	15	9	6	5	2	0

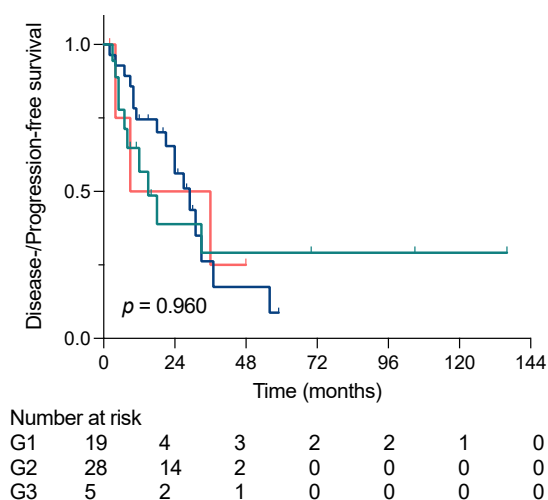
(b)



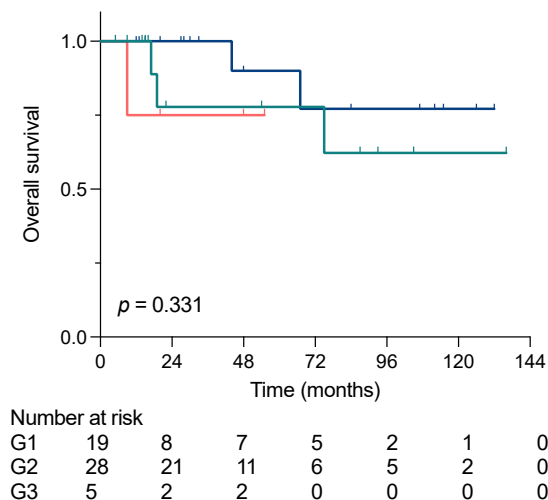
(c)



(d)



(e)



(f)

**Supplementary Figure S1.** Disease / Progression free and overall survival according to primary tumor site, grading of primary tumor and hepatic metastases. Different primary tumor sites did not show significant differences in (a) DFS / PFS nor (b) OS; (c) DFS / PFS and (d) OS did not differ significantly between primary tumor gradings focusing on G1 and G2 tumors; Different gradings of hepatic metastases had no significant effect on (e) DFS / PFS nor (f) OS. Survival analyses were performed using Kaplan-Meier method.