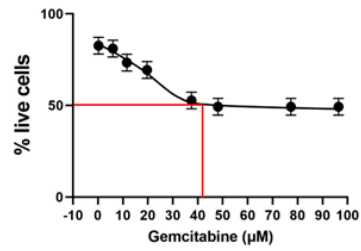
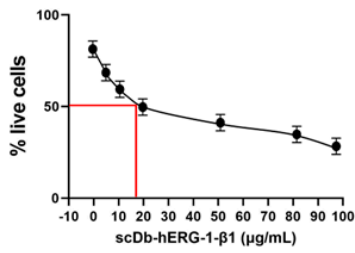
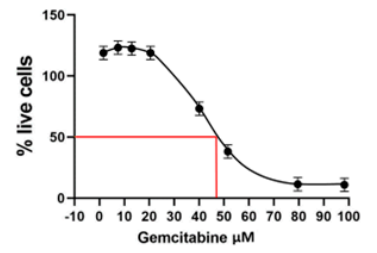
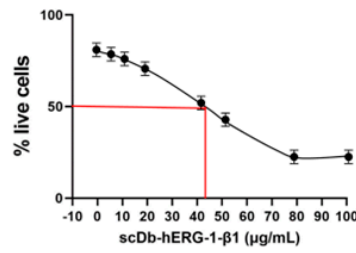


## Supplementary information

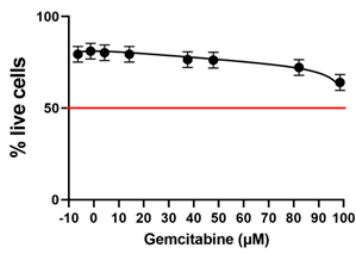
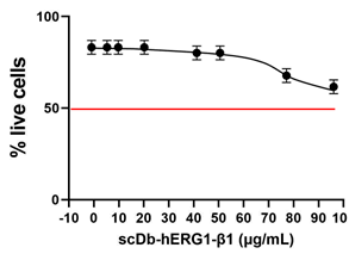
PANC-1



Mia Paca-2



BxPC3



RLT-PSC

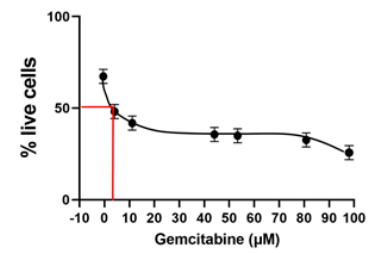
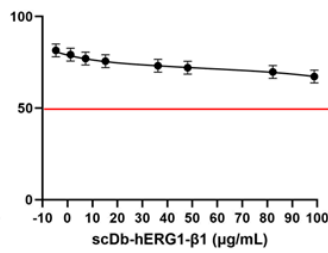
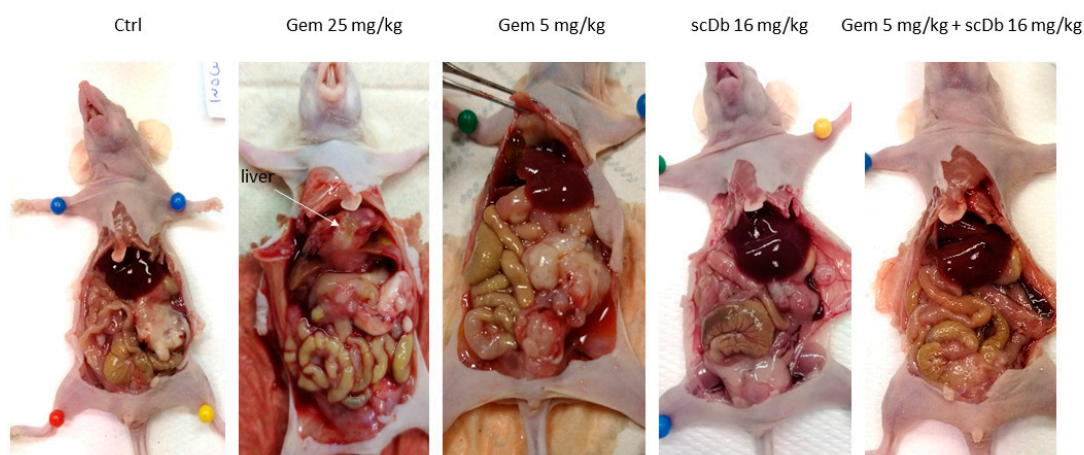


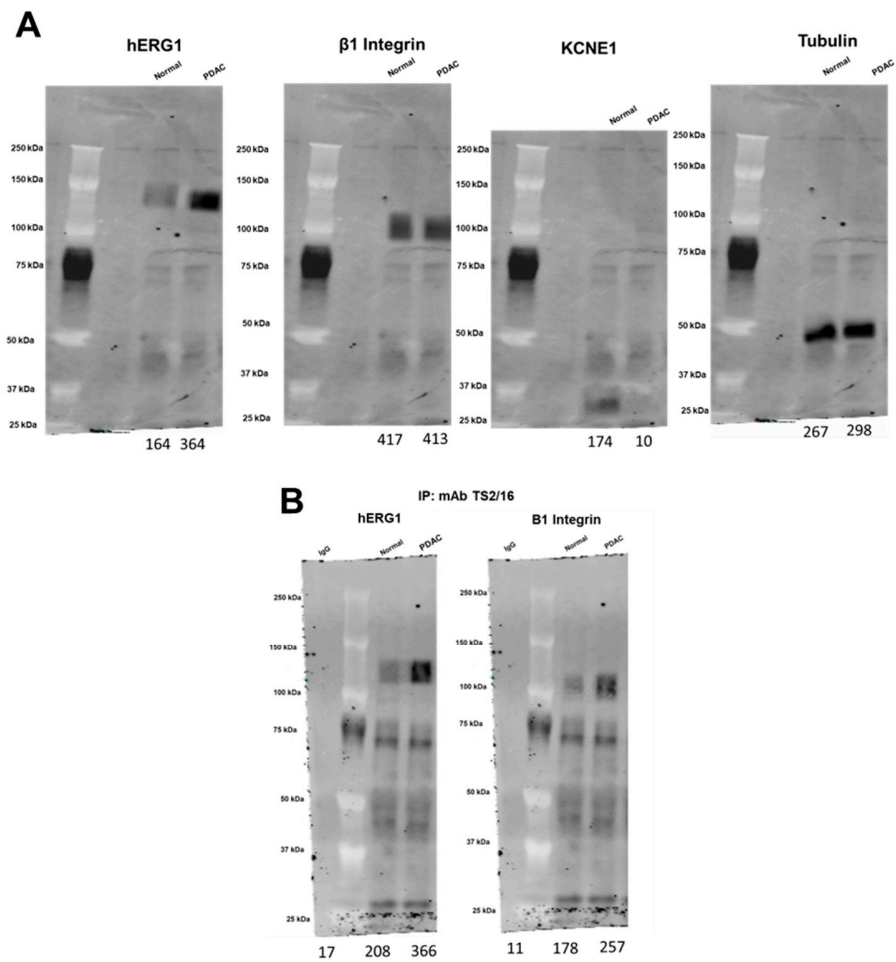
Figure S1: Dose-dependence curves of PANC-1, Mia-Paca2, BxPC3, RLT-PSC treated with different concentrations of scDb-hERG1-β1 and Gemcitabine for 24 hours. The intercept between the black curve and the red line indicates the IC50 value.

	Control	Gemcitabine 25mg/Kg	Gemcitabine 5mg/Kg	scDb- hERG1- $\beta$ 1	Mean survival time (Days)
Control	-				67
Gemcitabine 25mg/Kg	0.83	-	-	-	77
Gemcitabine 5mg/Kg	0.22	<b>0.02</b>	-	-	59
scDb-hERG1- $\beta$ 1	0.10	0.44	<b>0.05</b>	-	79
scDb-hERG1- $\beta$ 1 + Gemcitabine 5mg/Kg	0.33	0.81	0.10	0.71	82

*Table S1: Pairwise comparison for Kaplan-Meier survival curve. The  $p$  values calculated with Long-Rank test are reported. The last column show mean survival time of all the treatment groups.*



*Figure S2: Abdominal gross view at the end-point (the day of euthanasia) showed abnormal liver in mice treated with Gemcitabine at the dose of 25 mg/kg, while in the other groups of treatment no abnormalities were observed.*



*Figure S3: Whole blots of figure 1C (A) and figure 1D (B) with densitometry readings/intensity ratio of each band.*