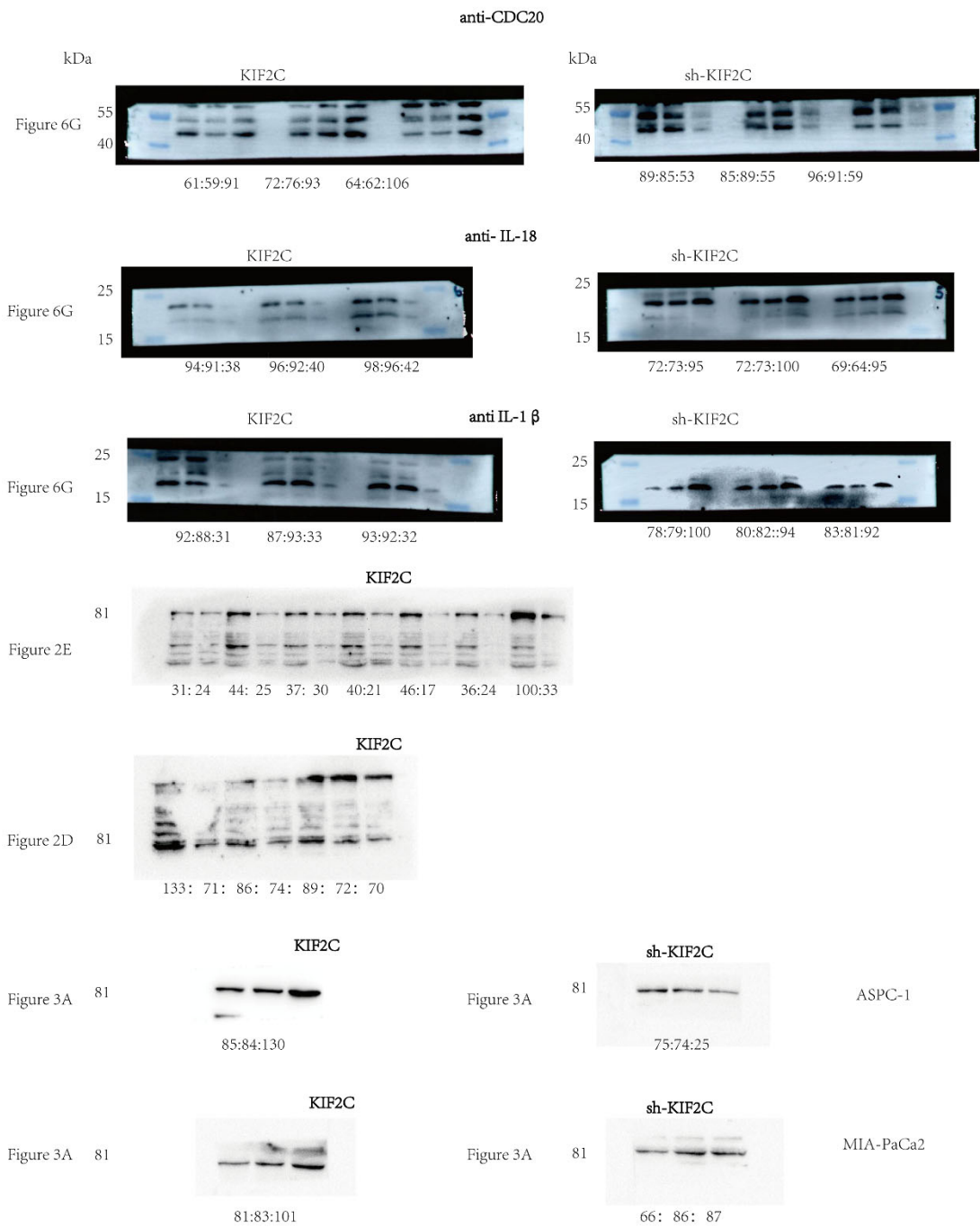
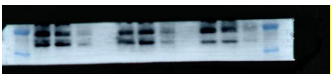


Supplementary File S1. Full Western blot images



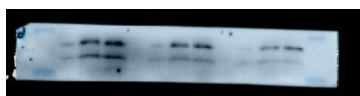
CDC20(55kDa) protein (sh-KIF2C). (This figure is the original image for Fig6G)



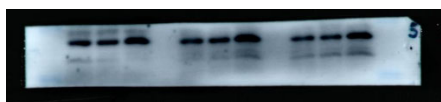
CDC20(55kDa) protein (KIF2C). (This figure is the original image for Fig6G)



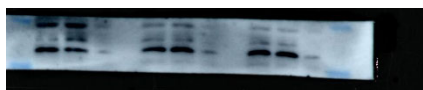
IL-18 (22kDa) protein (KIF2C). (This figure is the original image for Fig6G)



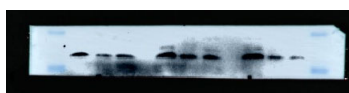
IL-18(22kDa) protein (sh-KIF2C). (This figure is the original image for Fig6G)



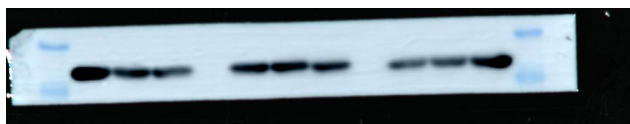
IL-1β(17kDa) protein (KIF2C) (This figure is the original image for Fig6G)



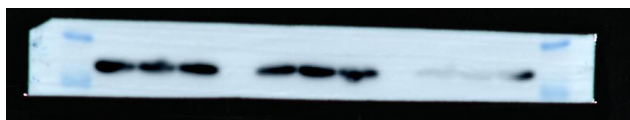
IL-1β(17kDa) protein (sh-KIF2C) (This figure is the original image for Fig6G)



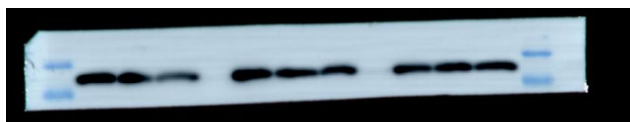
GAPDH (37kDa) (CDC20) (This figure is the original image for Fig6G)



GAPDH(37 kDa) (IL-1β) (This figure is the original image for Fig6G)

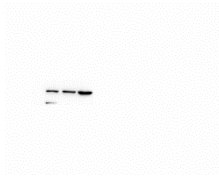


GAPDH (37kDa) (IL-18) (This figure is the original image for Fig6G)

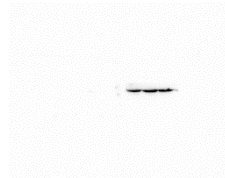
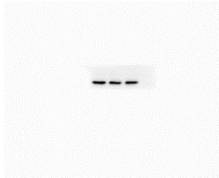


Transfection WB (KIF2C, 81 kDa)

ASPC-1 (KIF2C) ASPC-1 (sh-KIF2C) (This figure is the original image for Fig3A)

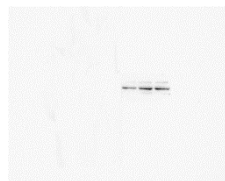
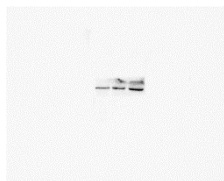


GAPDH

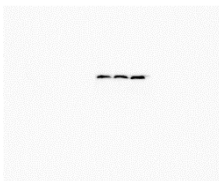


MIA-PaCa2 (KIF2C)

MIA-PaCa2 (sh-KIF2C) (This figure is the original image for Fig3A)

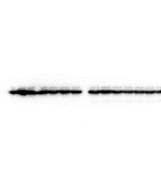


GAPDH



Seven Cell lines WB

GAPDH (This figure is the original image for Fig2D)



Tissue WB

GAPDH (This figure is the original image for Fig2E)

