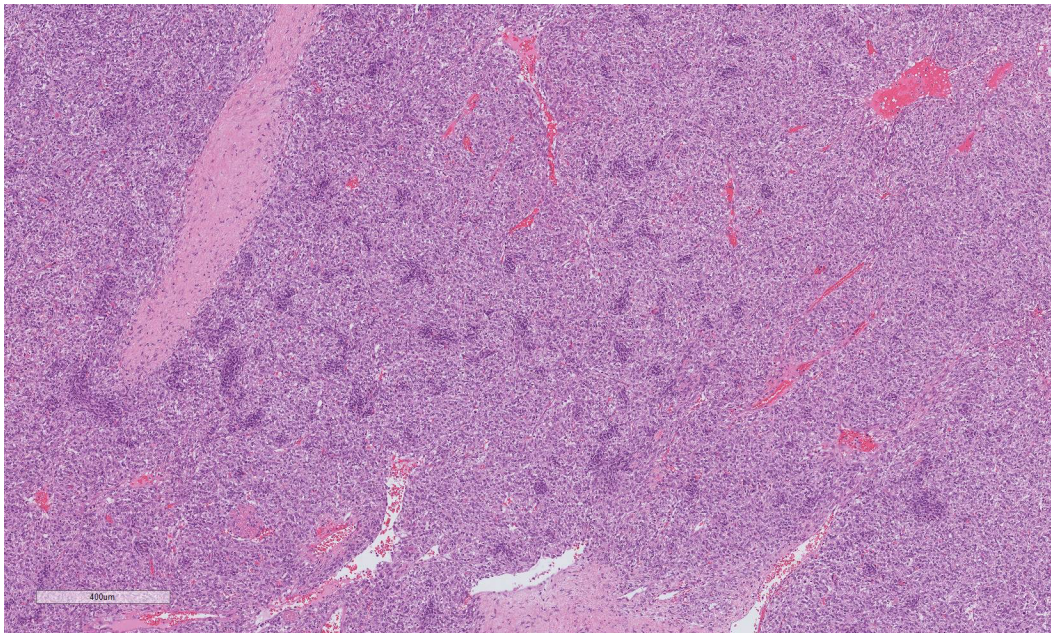


A

Figure 2A: Classic hyalinized solitary fibrous tumor



B

Figure 2B: Cellular variant of the tumor. The cellular SFT is characterized by a tightly packed proliferation of ovoid to spindle cells arranged around conspicuous vessels and scant stromal components.

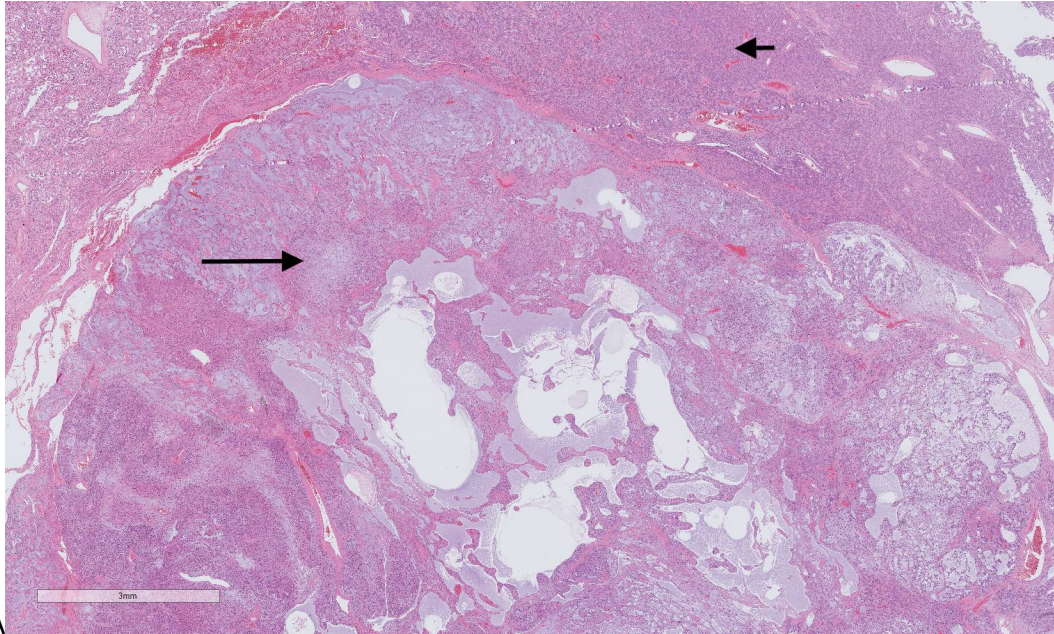


Figure 6. Dedifferentiated Solitary Fibrous Tumor H&E staining. Two distinct areas of typical solitary fibrous tumor (upper part/short arrow) and high-grade pleomorphic sarcoma (lower part/long arrow).