

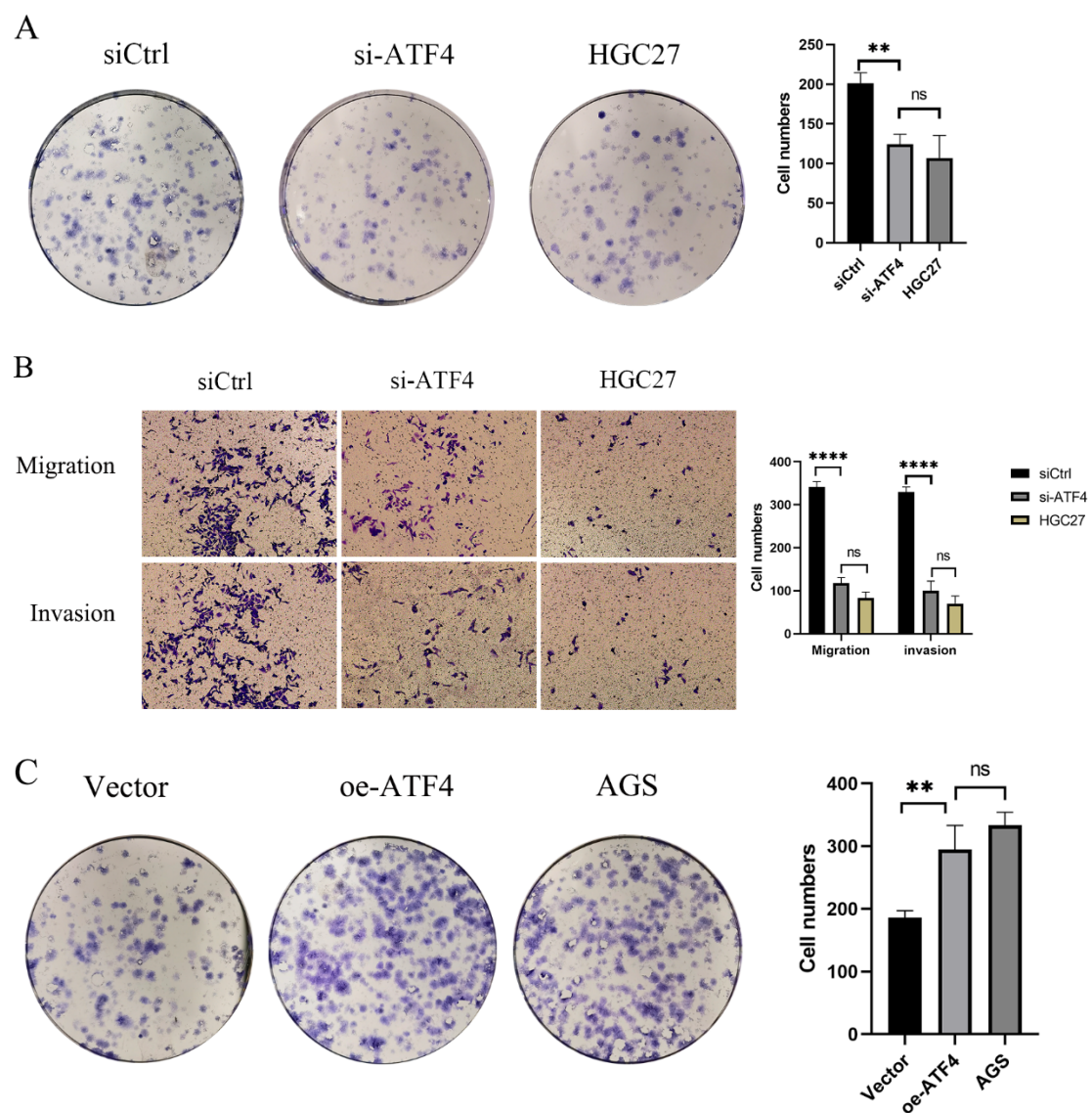
Supplementary S1

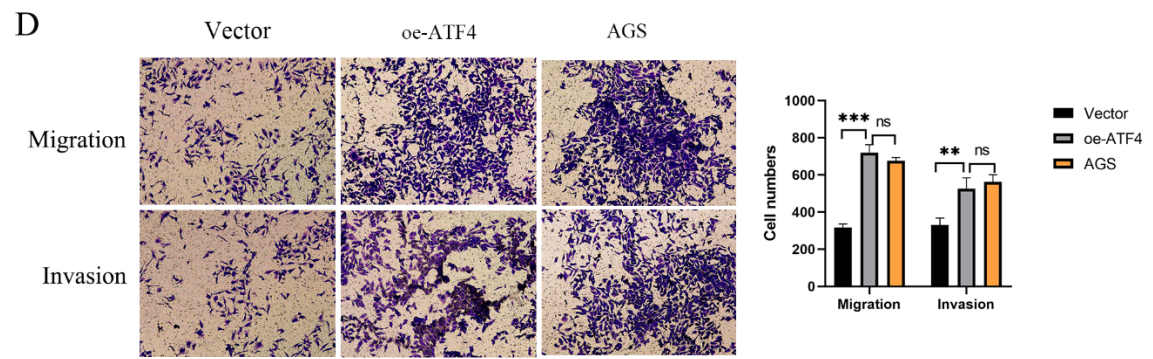
ATF4 promotes proliferation, invasion, and migration of gastric cancer cells.

(Figure AB) ATF4 knockdown strongly inhibits the proliferation and invasion of GC cells, there was no significant difference in growth, migration and invasion capacity between the sh-ATF4 AGS group and the HGC27 group.

(Figure CD) there was no significant difference in growth, migration and invasion capacity between the oe-ATF4 MGC803 group and AGS group.

** $p < 0.01$, *** $p < 0.001$, and **** $p < 0.0001$. ns means statistically insignificant.





Supplementary S2

The original western blot figures.

Figure 1B



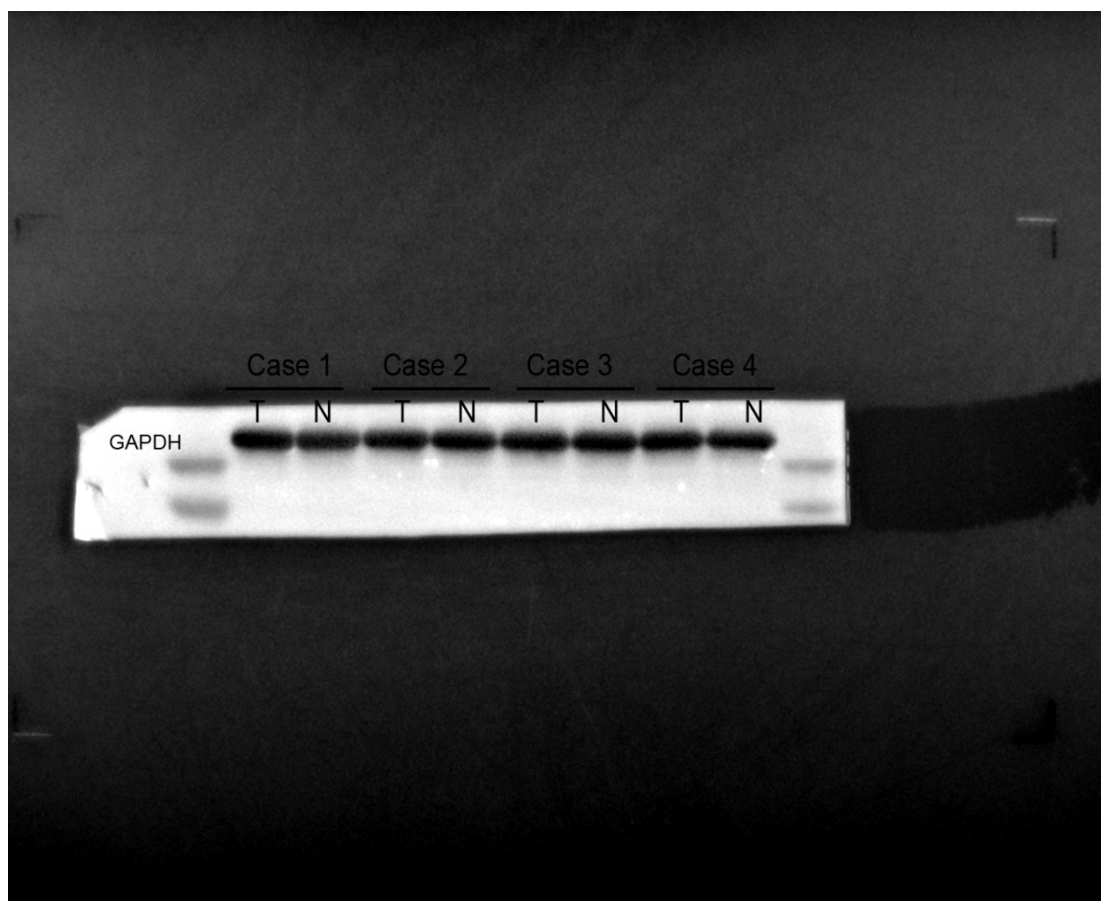
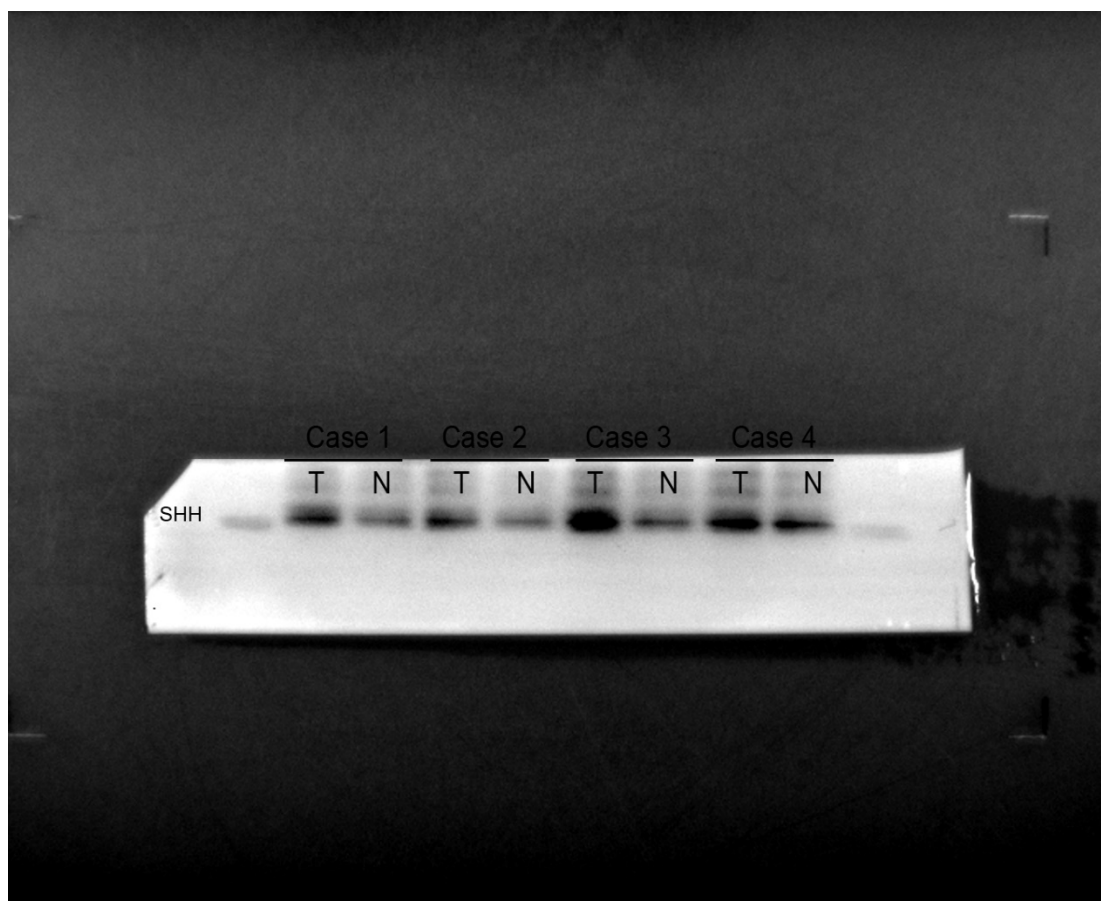
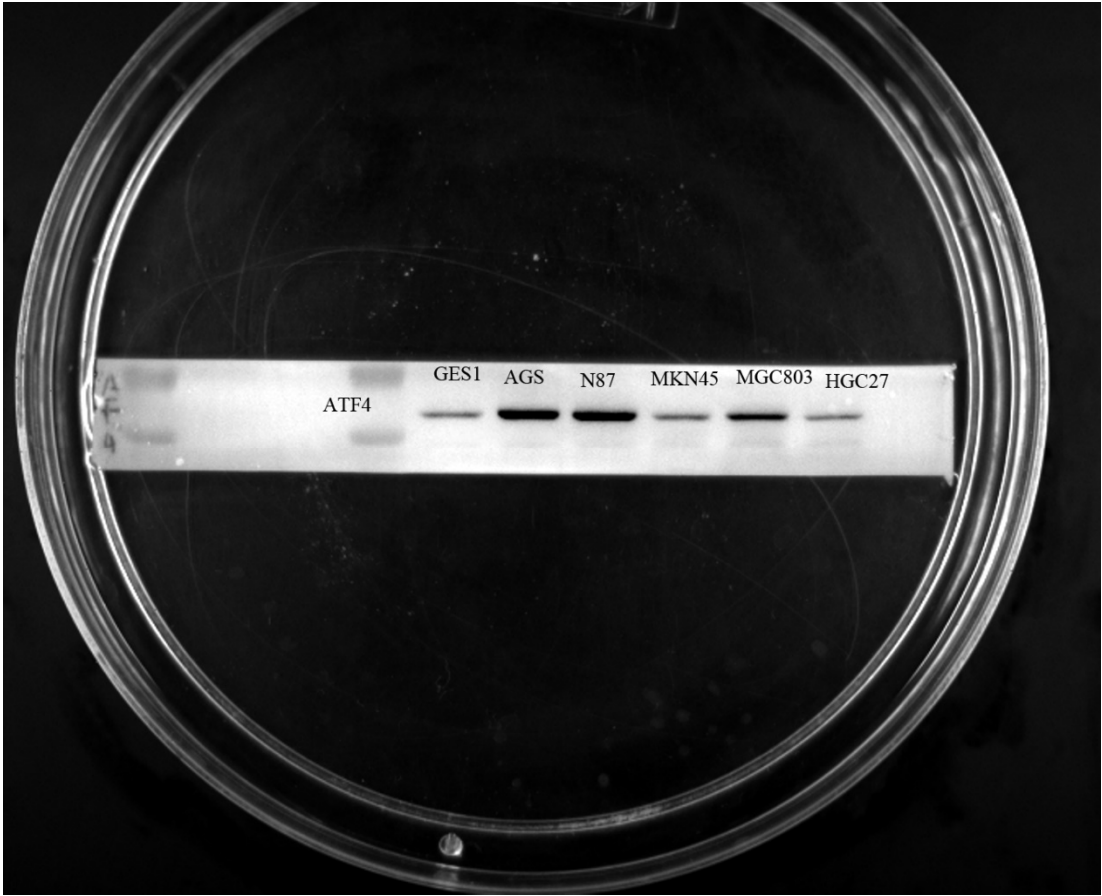


Figure 1E



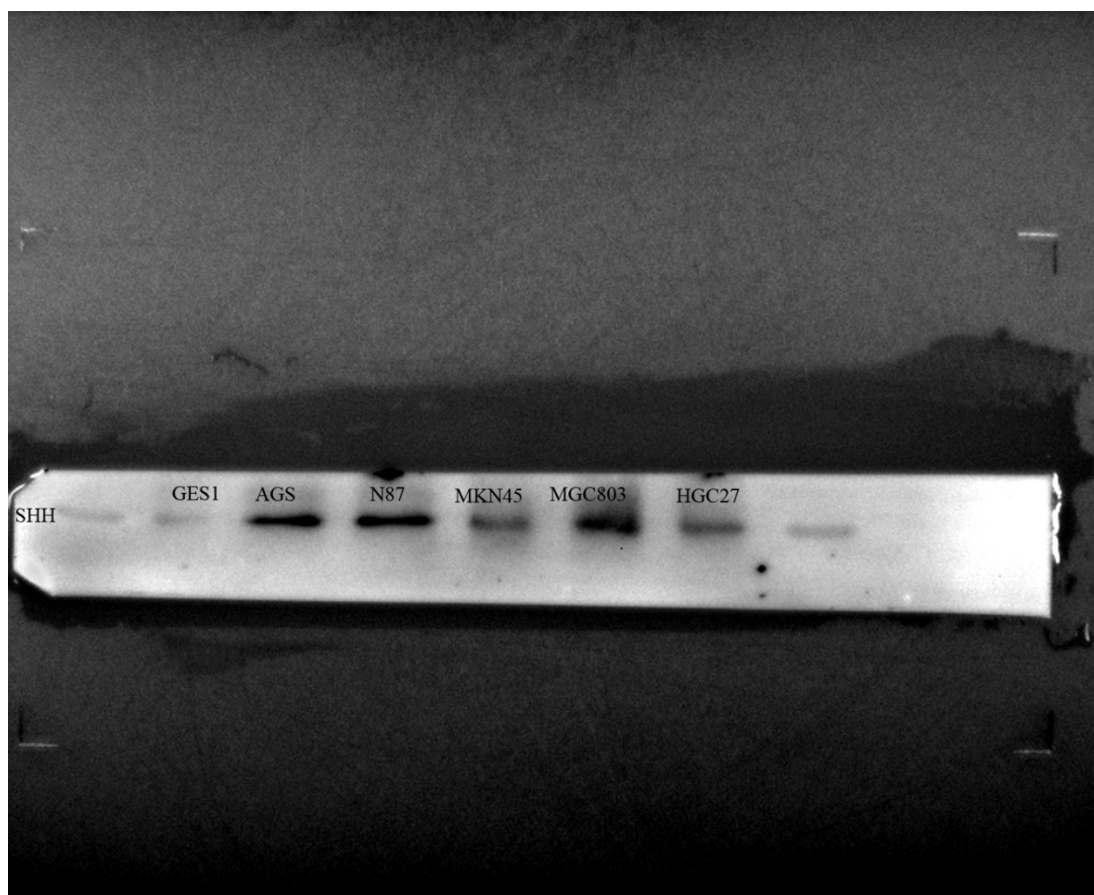
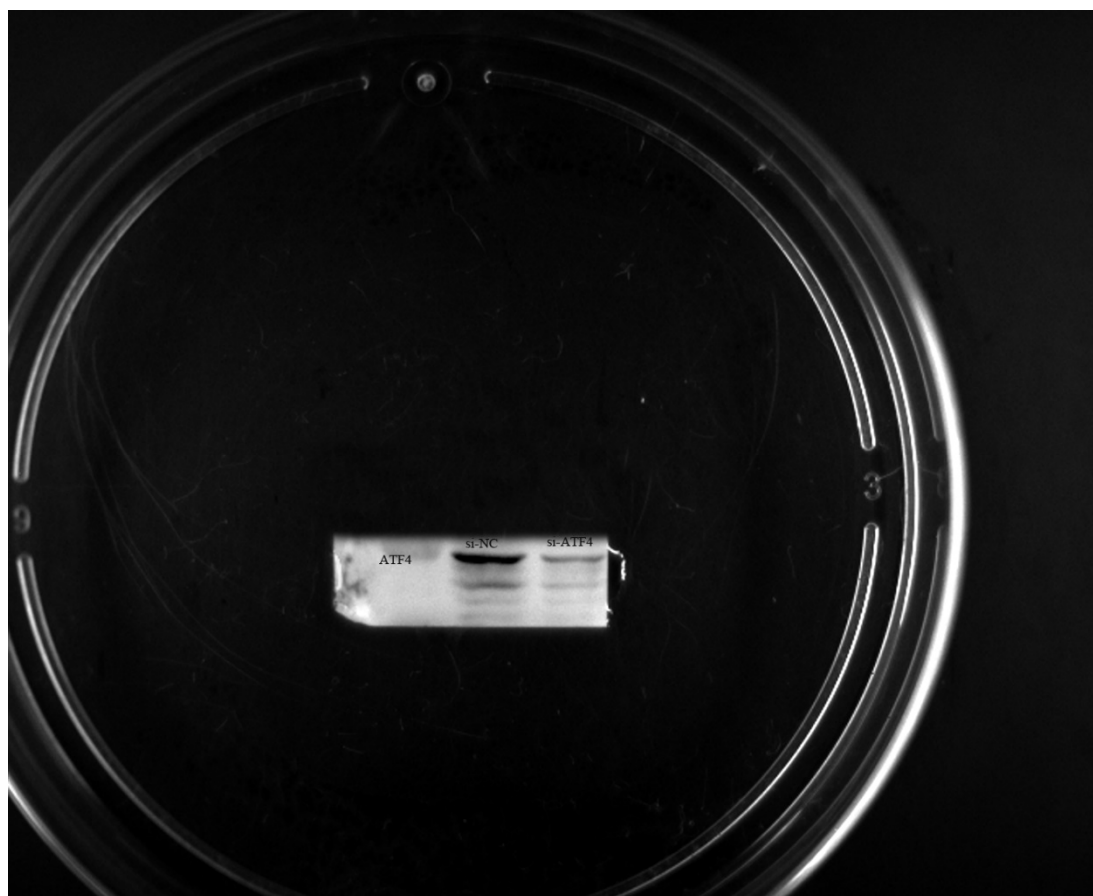


Figure 2B



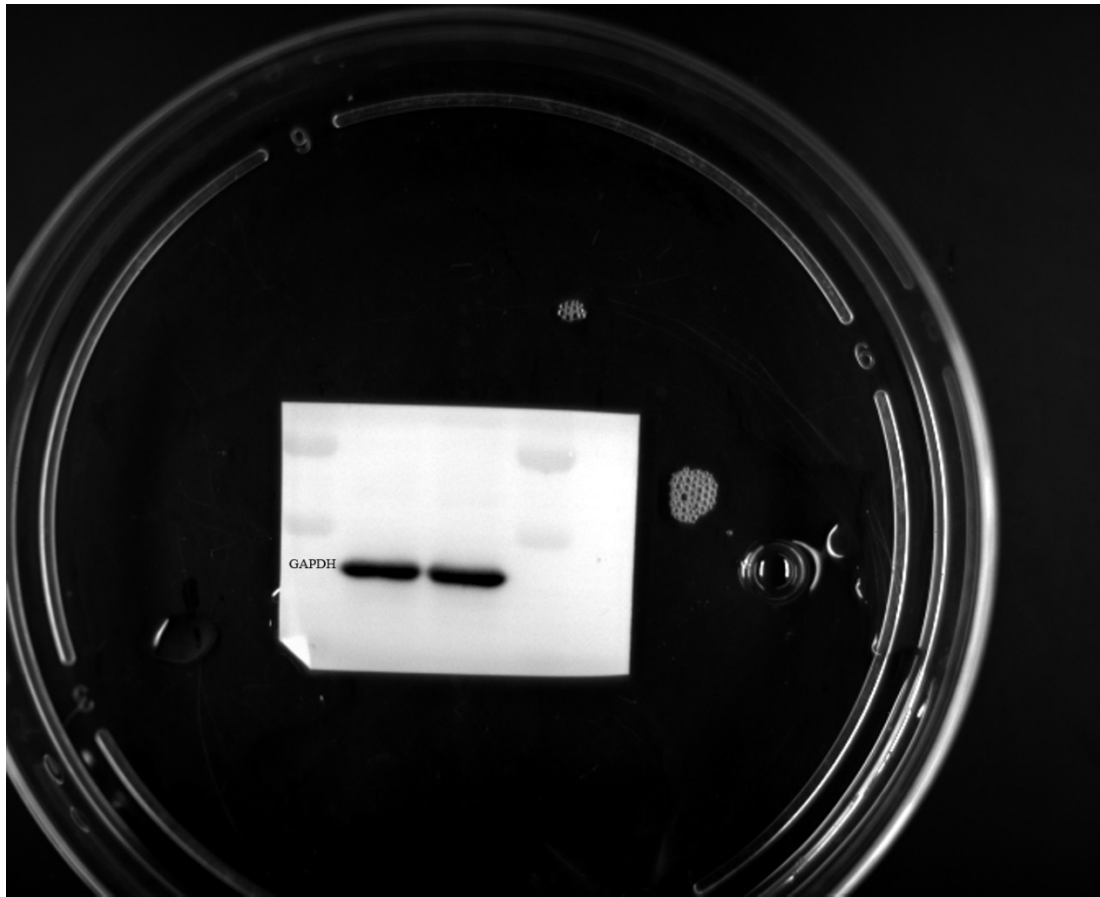


Figure 3B

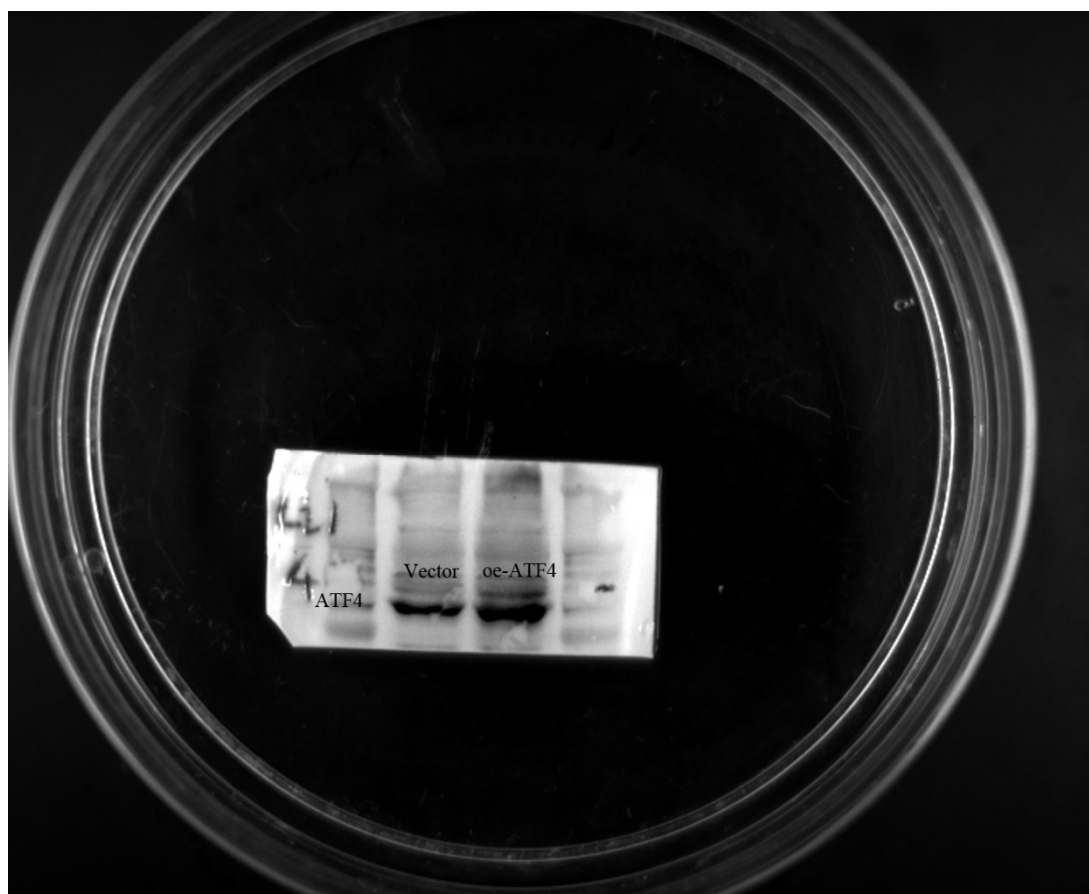


Figure 4C





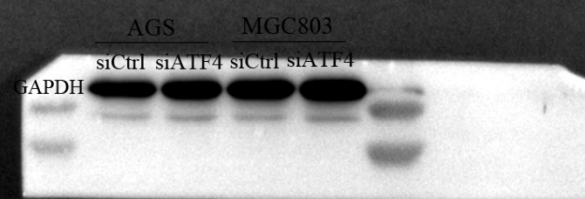


Figure 4D

