

Supplementary Materials: Contribution of Mitochondrial Activity to Doxorubicin-Resistance in Osteosarcoma Cells

Isabella Giacomini, Margherita Cortini, Mattia Tinazzi, Nicola Baldini, Veronica Cocetta, Eugenio Ragazzi, Sofia Avne and Monica Montopoli

Table S1. Cytotoxic effect of doxorubicin (calculated as IC₅₀) after 24, 48, and 72 hours of treatment in MG63, DXR 30 ng/mL, and MG63 DXR 100 ng/mL cell lines.

Cell Line	IC ₅₀ Doxorubicin (ng/mL) ^a		
	24 Hours	48 Hours	72 Hours
MG63	356.36 ± 5.11	143.68 ± 3.51	−3.23 ± 0.12
MG63 DXR30 ng/mL	1329.15 ± 9.12 ****	402.18 ± 4.22 ****	201.63 ± 7.40 ****
MG63 DXR100 ng/mL	820.54 ± 6.50 °°°°	485.95 ± 2.17 °°°°	308.38 ± 9.01 °°°°

^a Values were determined by regression analysis and are expressed as mean ± SD of three different experiments. *****p*<0.0001, MG63 DXR 30 ng/mL vs MG63 cells; °°°°*p*<0.0001, MG63 DXR 100 ng/mL vs. MG63 cells

Table S2. Cytotoxic effect of doxorubicin (calculated as IC₅₀) after 24, 48, and 72 hours of treatment in HOS, HOS DXR 10 ng/mL, HOS DXR 30 ng/mL, and HOS DXR 100 ng/mL cell lines.

Cell Line	IC ₅₀ Doxorubicin (ng/mL) ^a		
	24 Hours	48 Hours	72 Hours
HOS	180.36 ± 8.66	−96.67 ± 3.17	−144.89 ± 4.98
HOS DXR10 ng/mL	1550.42 ± 12.65 ****	331.15 ± 2.86 ****	362.64 ± 4.31 ****
HOS DXR30 ng/mL	1041.80 ± 1.50 °°°°	251.10 ± 2.35 °°°°	270.18 ± 1.61 °°°°

^a Values were determined by regression analysis and are expressed as mean ± SD of three different experiments. *****p*<0.0001, HOS DXR 10 ng/mL vs. HOS cells; °°°°*p*<0.0001, HOS DXR 30 ng/mL vs. HOS cells; *****p*<0.0001, HOS DXR 100 ng/mL vs. HOS cells.

VDAC1

TOM20

ACTIN

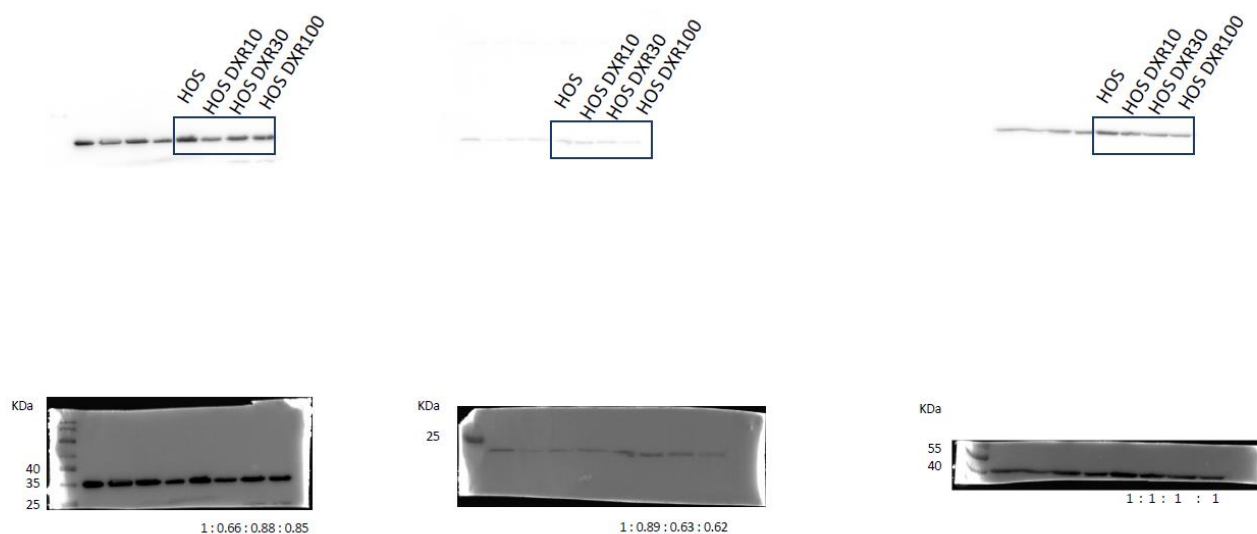


Figure S1. Western blot HOS.

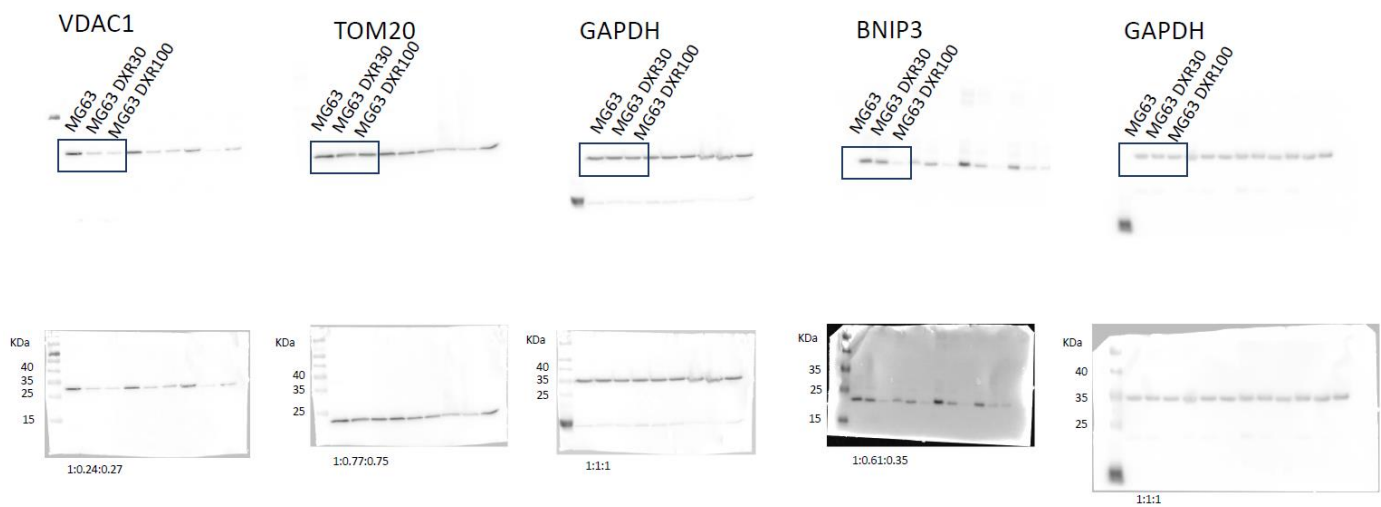


Figure S2. Western blot MG63.