

Figure S1. Study flow diagram.

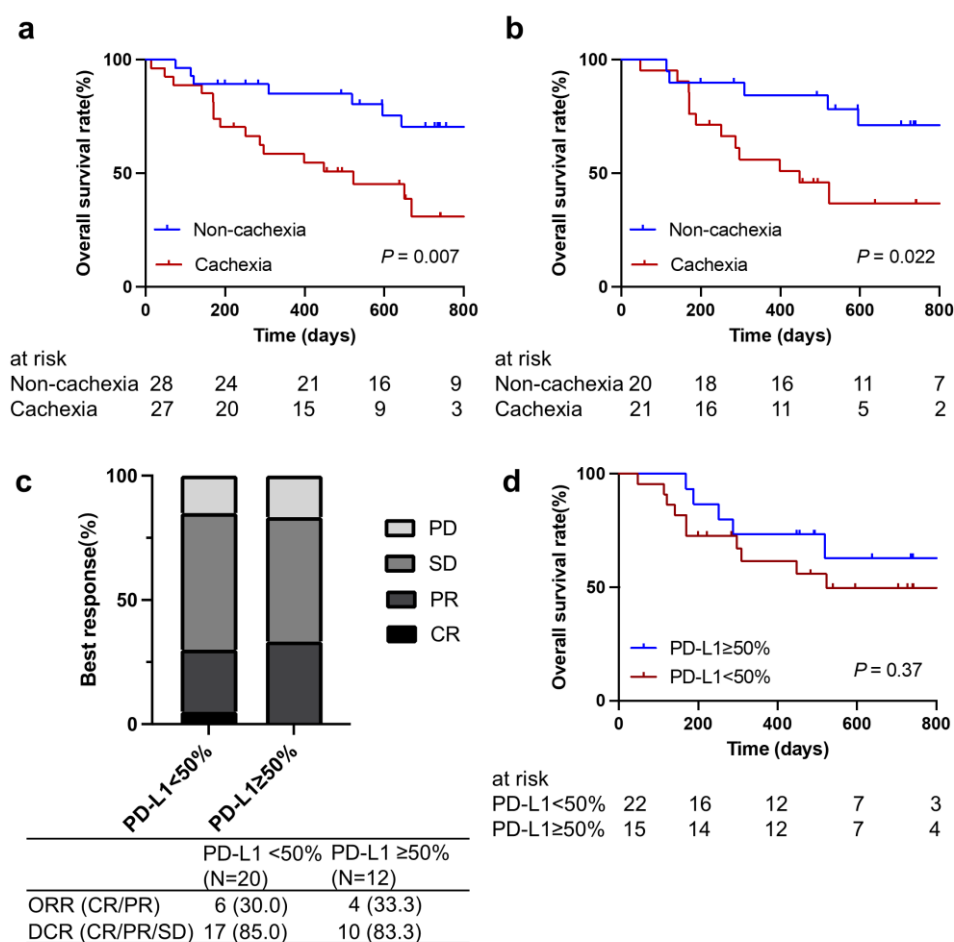


Figure S2. The impact of cancer cachexia and PD-L1 expression on therapeutic outcomes (a) Overall survival in patients with cachexia (n=27) versus those without cachexia (n=28) in the cohort of 55 patients. (b) Overall survival between cachectic (n=21) and non-cachectic (n=20) patients in 41 patients with a cytokine assay analysis. (c) Therapeutic responses to PD-1/PD-L1 blockades according to PD-L1 expression in 41 patients with a cytokine assay analysis. (d) Overall survival in patients with high PD-L1 (≥50%) versus those with low PD-L1 (<50%).

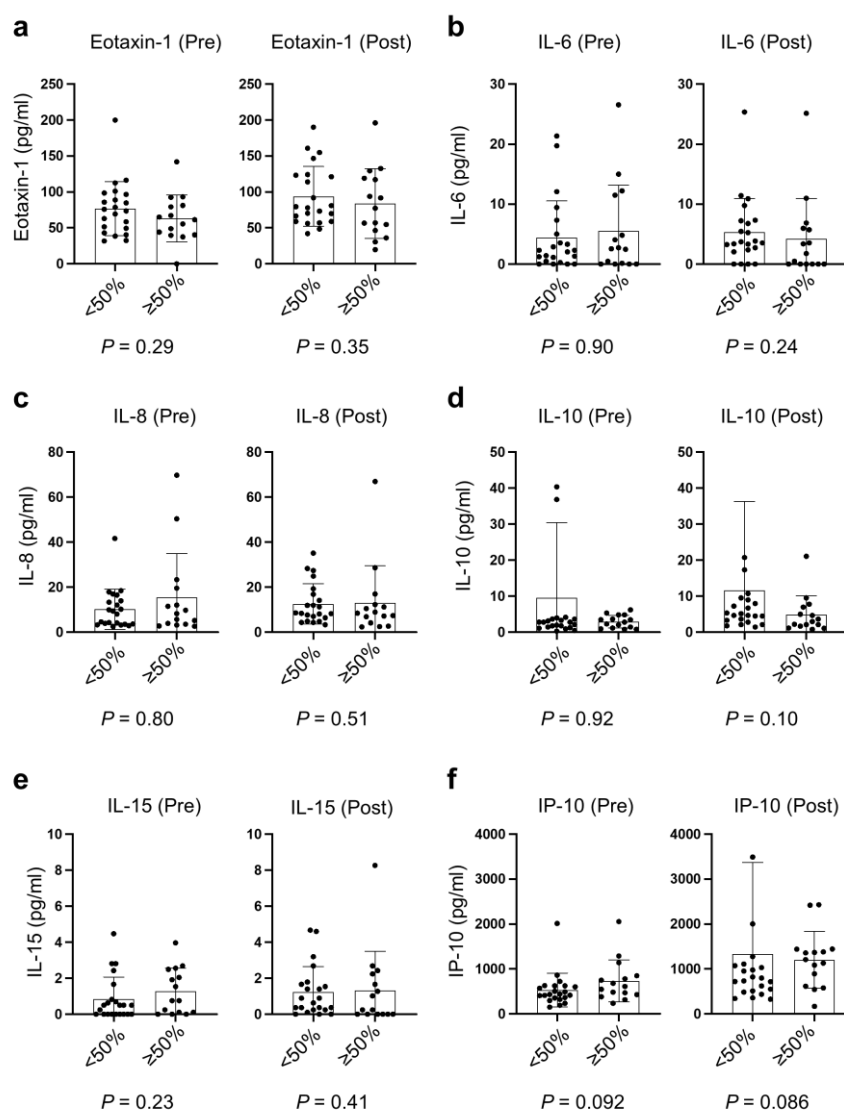


Figure S3. Distribution of cachexia-related cytokines in PD-L1 < 50% versus PD-L1 \geq 50% at baseline and during treatment with PD-1/PD-L1 blockade.