

Supplementary Materials: Deep Learning for Automated Elective Lymph Node Level Segmentation for Head and Neck Cancer Radiotherapy

Victor I. J. Strijbis, Max Dahele, Oliver J. Gurney-Champion, Gerrit J. Blom, Marije R. Vergeer, Berend J. Slotman and Wilko F. A. R. Verbakel

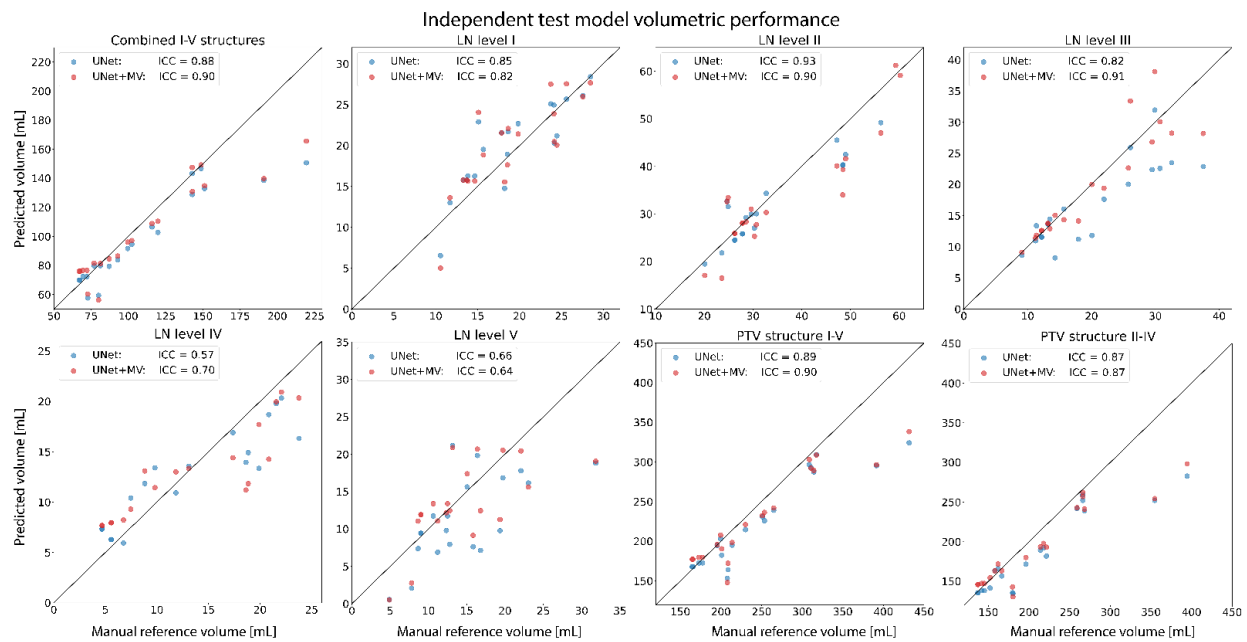


Figure S1: Predicted and manual reference volumes for all structures resulting from the independent test set. Abbreviations: ICC: intra-class correlation (two-way mixed, single measures, consistency).

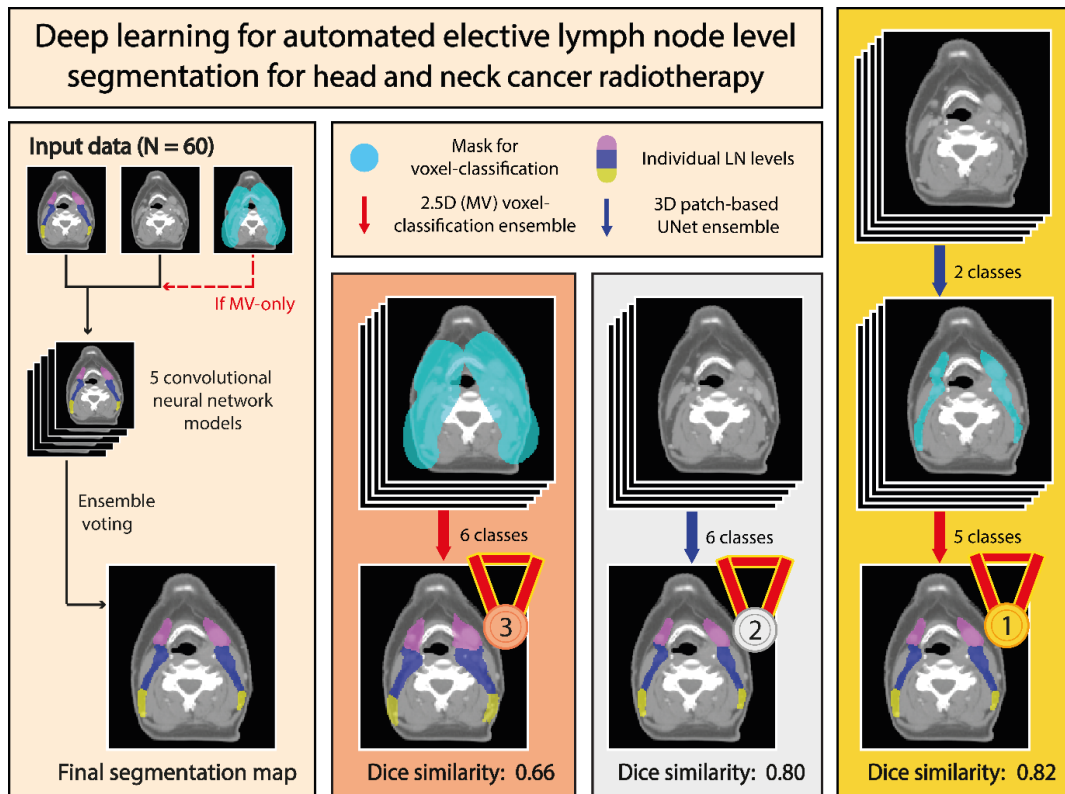


Figure S2: Graphical summary of the proposed work.