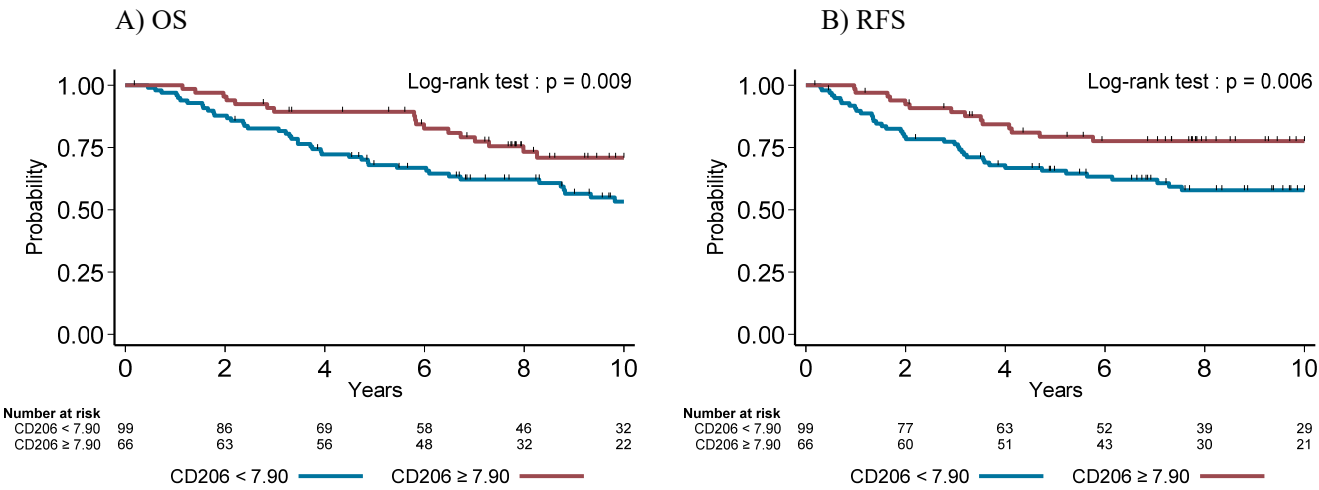


CD206 prognostic significance in tumors with TILs ≤ 5%



Supplementary Figure S6: Influence of CD206 expression on overall survival (OS) (A and C) and relapse-free survival (RFS) (B and D) according to TILs level: TILs ≤ 5% (A and B) and TILs > 5% (C and D). Red lines represent high CD206 expression (≥ 7.90 cells/cm²) and blue lines represent low CD206 expression (< 7.90 cells/mm²). N=165 tumors with TILs ≤ 5%; N=102 tumors with TILs > 5%.

CD206 prognostic significance in tumors with TILs > 5%

