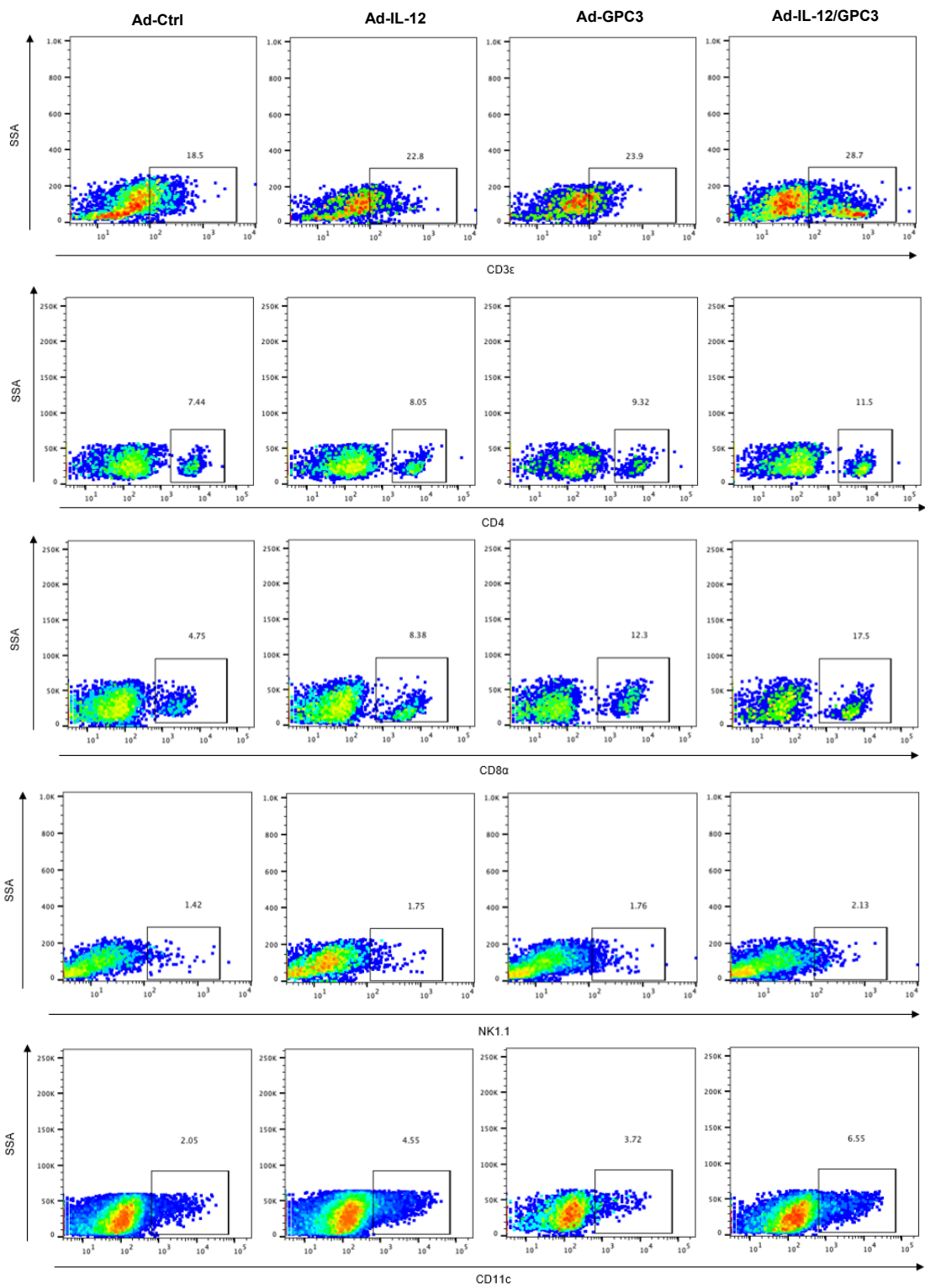
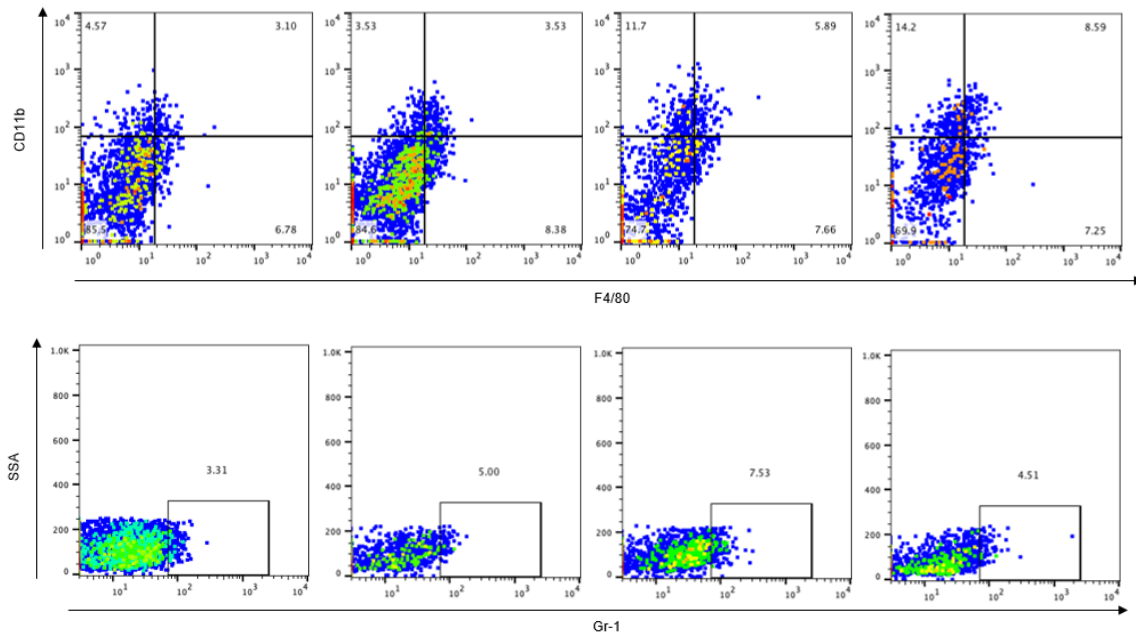


Figure. S2. Tumor infiltration of immune cells was detected by flow cytometry.





Mice were sacrificed on the 42nd day after tumor inoculation, and the frequencies of T, CD4⁺ T, CD8⁺ T, NK, DCs, macrophages, or MDSCs were analyzed in TILs of mice. Results from one representative experiment are shown for each group.